



Defect Listing Plot

Pipe Segment Refere... 15	City WICHITA	Street MCLEAN BLVD	Material PolyVinyl Chloride	Location C... Easement/R...	Sewer Use Stormwater
Upstream MH 2+31.24	Total Length	Up Rim to Invert 11.8	Shape Circular	Location Details LINE 0	
DS Manhole 2+14.64	Length surveyed 18.6	Down Rim to Invert 12.7	Height 18	Width 18	Pipe Joint...

SPR 0	MPR 0	PO Number 603 PPD 133119		Customer DONDLINGER	
SPRI 0	MPRI 0	Work Order		Purpose Pre-Acceptance	
QSR 0000	QMR 0000	Direction Downstream	Date 20200124	Media label	
OPR 0	Surveyed By Chuck	Pre-Cleaning Jetting	Time 12:27	Weather Light Rain	
OPRI 0	Certificate Number U-0118-070300421	Date Cleaned 20200124	End Time 12:32	Additional Info TV14	

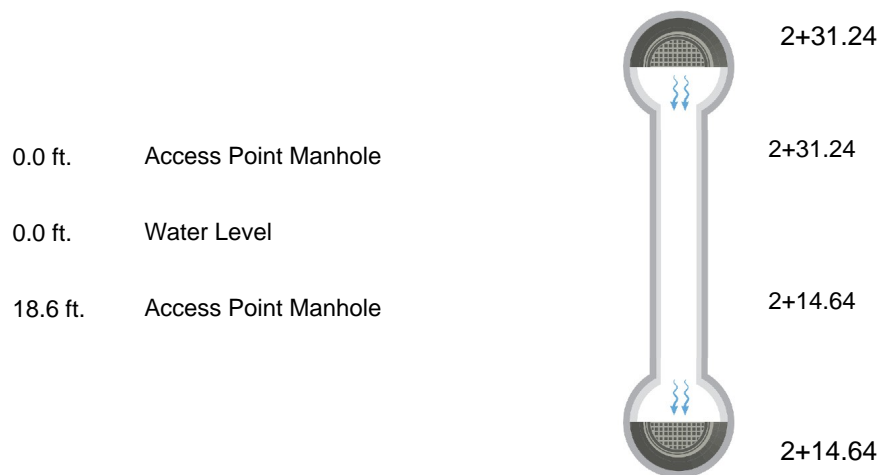
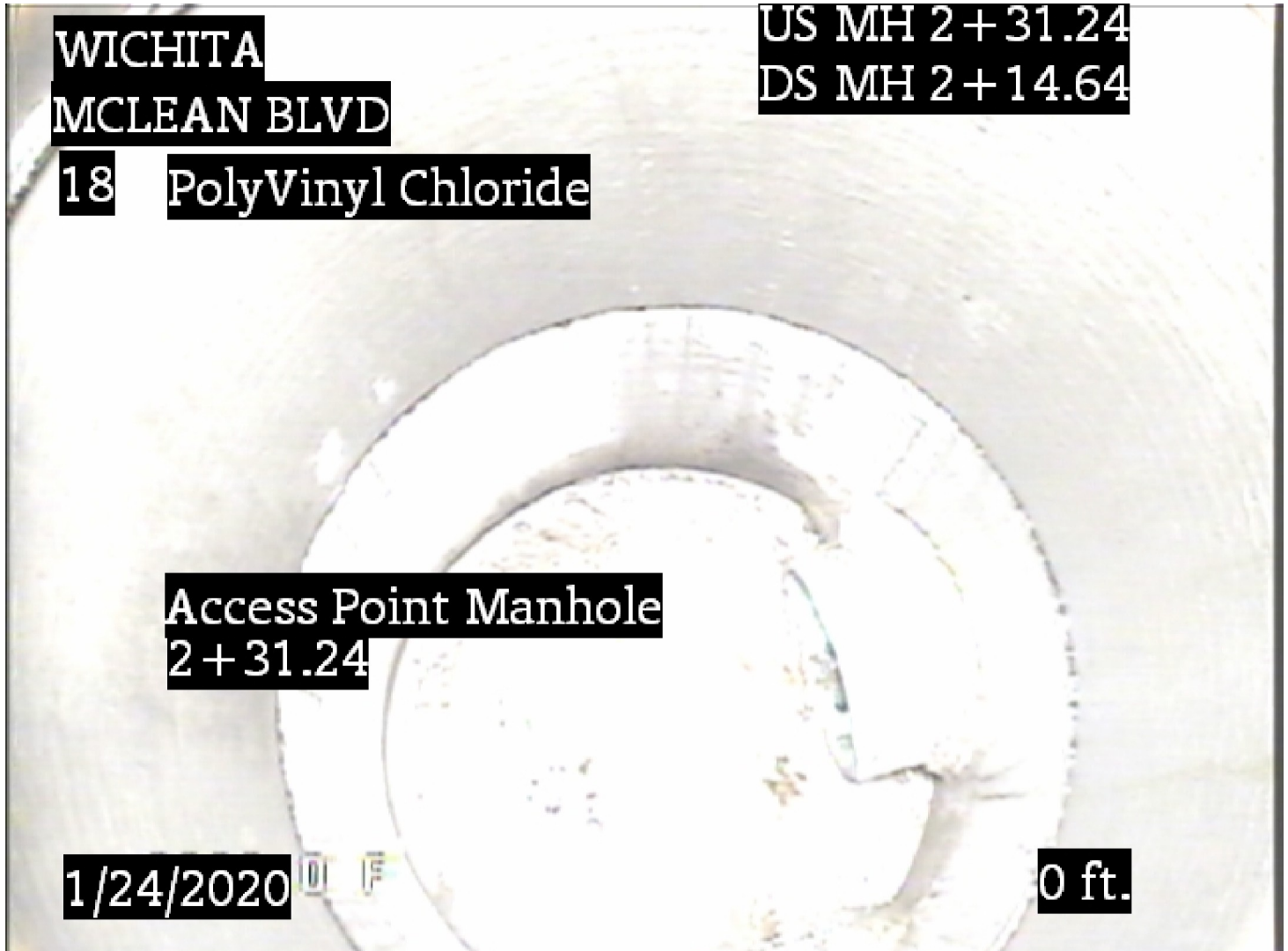




Image Report 1/Page

Pipe Segment Refere... 15	City WICHITA	Street MCLEAN BLVD	Material PolyVinyl Chloride	Location C... Easement/R...	Sewer Use Stormwater
Upstream MH 2+31.24	Total Length	Up Rim to Invert 11.8	Shape Circular	Location Details LINE 0	
DS Manhole 2+14.64	Length surveyed 18.6	Down Rim to Invert 12.7	Height 18	Width 18	Pipe Joint...

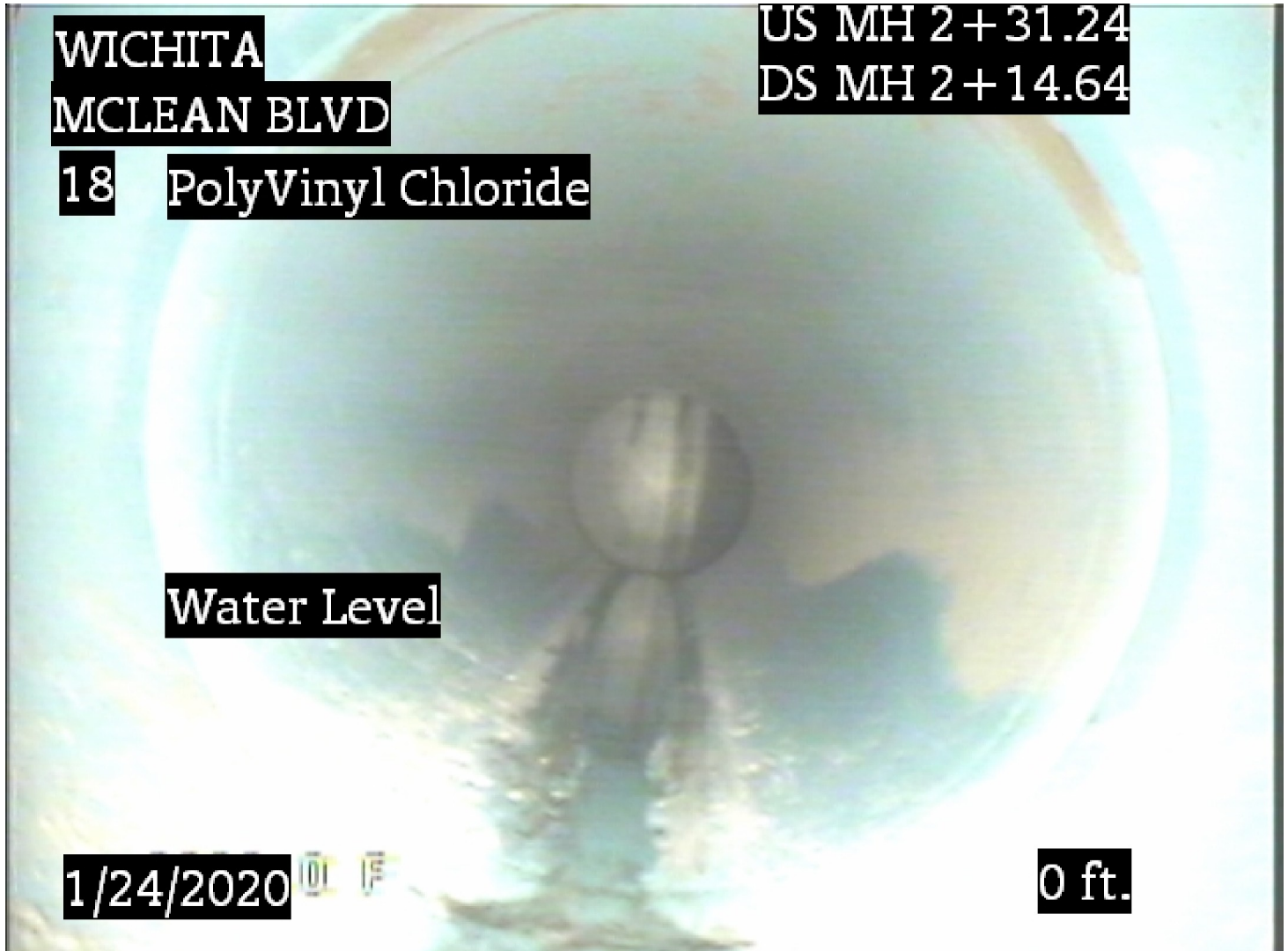


Distance: 0.0 ft.
 Condition: Access Point Manhole
 Grade: 0
 Remarks: 2+31.24



Image Report 1/Page

Pipe Segment Refere... 15	City WICHITA	Street MCLEAN BLVD	Material PolyVinyl Chloride	Location C... Easement/R...	Sewer Use Stormwater
Upstream MH 2+31.24	Total Length	Up Rim to Invert 11.8	Shape Circular	Location Details LINE 0	
DS Manhole 2+14.64	Length surveyed 18.6	Down Rim to Invert 12.7	Height 18	Width 18	Pipe Joint...

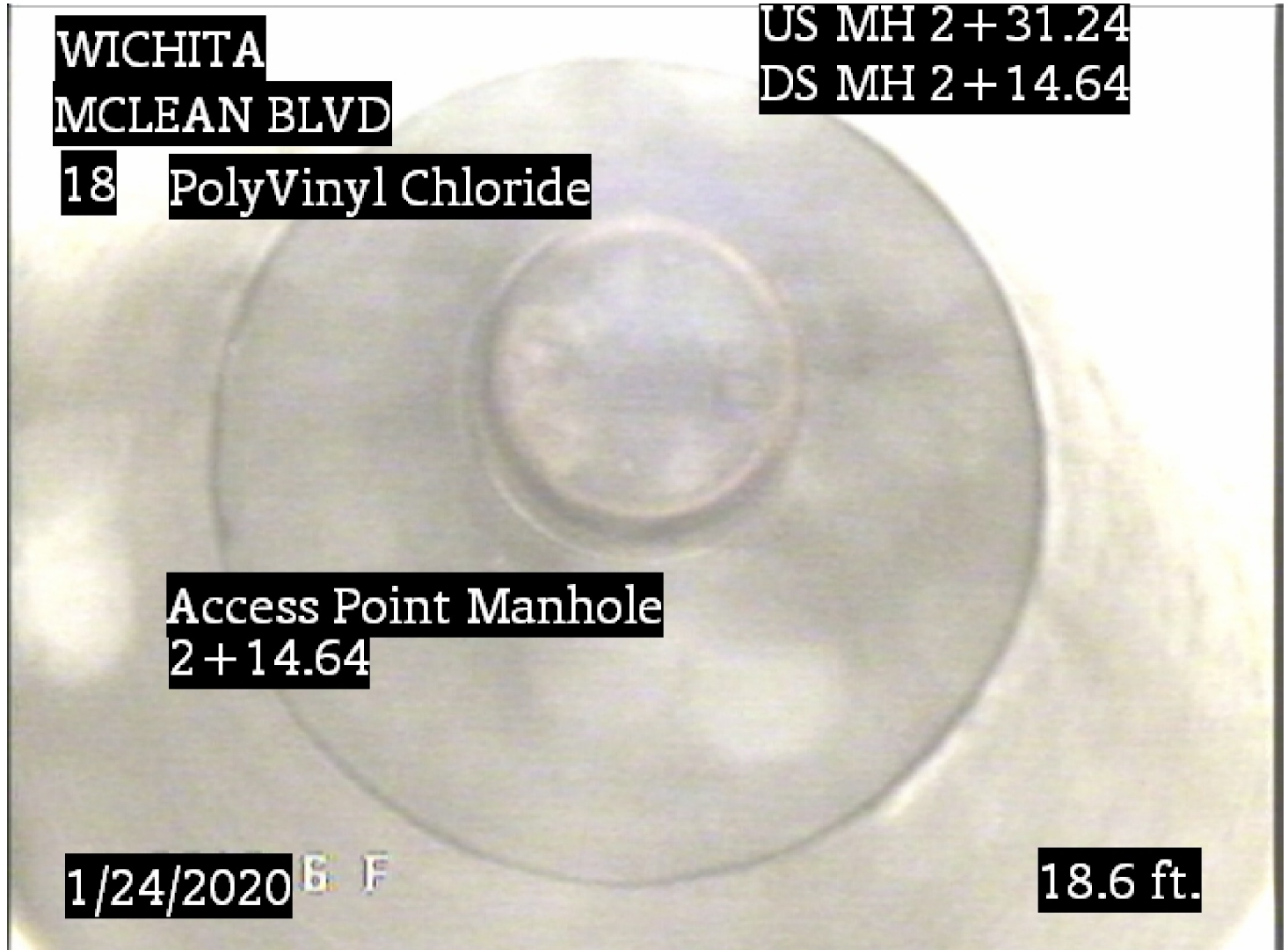


Distance:	0.0 ft.
Condition:	Water Level
Grade:	0
Remarks:	N/A



Image Report 1/Page

Pipe Segment Refere... 15	City WICHITA	Street MCLEAN BLVD	Material PolyVinyl Chloride		Location C... Easement/R...	Sewer Use Stormwater
Upstream MH 2+31.24	Total Length	Up Rim to Invert 11.8	Shape Circular		Location Details LINE 0	
DS Manhole 2+14.64	Length surveyed 18.6	Down Rim to Invert 12.7	Height 18	Width 18	Pipe Joint...	



Distance:	18.6 ft.
Condition:	Access Point Manhole
Grade:	0
Remarks:	2+14.64