

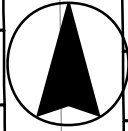
MH # 5549-182
Reconstruct Manhole
Approx depth = 3.2 ft

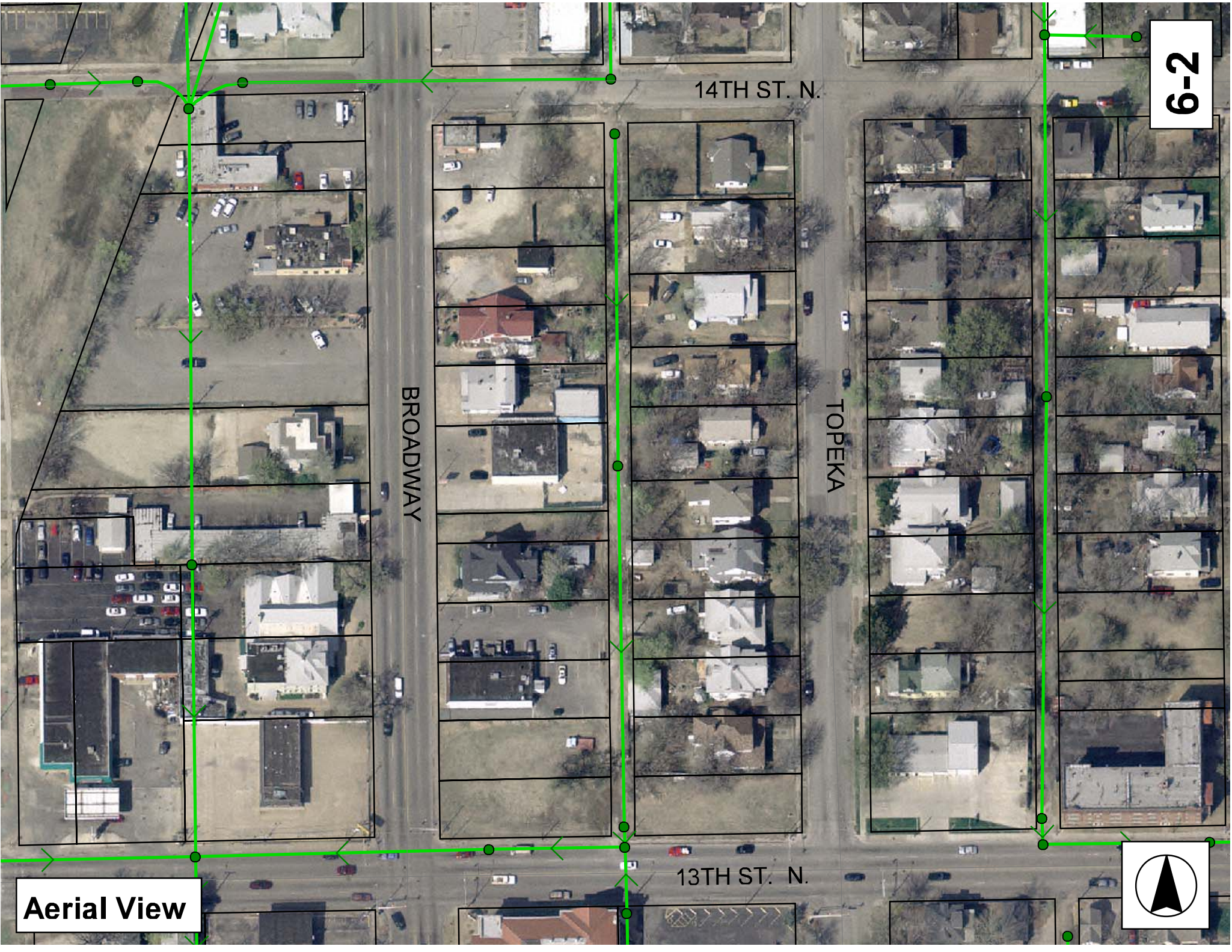
MH # 5549-179
Approx. depth = 4.8 ft

MH # 5549-176
Reconstruct Manhole
Approx depth = 3.8 ft

Remove and replace 573 lf of 8" pipe
from MH 5549-182 to MH 5549-176

SITE 6





6-2

14TH ST. N.

BROADWAY

TOPEKA

13TH ST. N.

Aerial View



Television Inspection Master Report

4/13/2007
3:40 PM

US Structure: 5549-182 329 E 14TH ST Date Insp: 11/29/2006 Basin: C03D
DS Structure: 5549-179 1430 N BROADWAY ST Dir Televised: Upstream To Downstream

Pipe Information

A-187

Shape: Round Length Status: VCP Project No.:
Dia/Ht Width: 8 Material: Index:
Length: 283.0 Slope: 0.300 Surface:

Inspection Information

DVD #0212

Crew: 694 Percent Full: Tape ID:
Weather: Sunny Purpose: TV Existing Line Counter Start:
Surface Cond: N/A Flow: Normal Flow Counter Stop:

Obs. #	VTR Counter	Distance	Location	Description	Rating	Obsrvd (gpm)	Est. (gpm)	Ratings Struct	Clean	Remain (gpm)
1		0.0	US Manhole	5549-182	1		0.000	0	0	0.000
				PIPE STARTS WITH PVC AT MANHOLE WALL						
2		5.5	West	Wye Service	1		0.000	0	0	0.000
				1460 N Broadway / PVC						
5		5.7		Crack-Horizontal	2		0.000	0	0	0.000
3		7.1	East	Break-In Conn	1		0.000	0	0	0.000
				1457 N. Topeka / PVC						
4		10.9		PVC ends & VCP begins	1		0.000	0	0	0.000
6		18.7		Crack-Horizontal	2		0.000	0	0	0.000
7		28.6	Upper Left	Crack-Horizontal	2		0.000	0	0	0.000
8		30.0	West	Break-In Conn	3		0.000	0	0	0.000
				APPEARS ABANDON / NOT SEALED AT THE MAIN / DIRT IN THE LATERAL						
9		32.2	East	Sealed Off Wye Connection	1		0.000	0	0	0.000
10		43.2	Invert	Crack-Radial	2		0.000	0	0	0.000
11		53.5	Upper Left	Broken Pipe	2		0.000	0	0	0.000
12		54.3	West	Wye Service	1		0.000	0	0	0.000
				APPEARS ABANDON / NOT SEALED AT THE MAIN						
13		56.4	East	Sealed Off Wye Connection	1		0.000	0	0	0.000
47		78.2	West	Break-In Conn	1		0.000	0	0	0.000
14		81.0	West	Sealed Off Wye Connection	1		0.000	0	0	0.000
15		83.4	East	Wye Service	1		0.000	0	0	0.000
				1453 N TOPEKA						
16		84.8	Upper Left	Other	2		0.000	0	0	0.000
				POINT REPAIR MADE						
17		97.0		OH	1		0.000	0	0	0.000
18		101.7	Lower Right	Broken Pipe	2		0.000	0	0	0.000
19		107.5	West	Wye Service	1		0.000	0	0	0.000
				1446 N BROADWAY						
20		109.5	East	Wye Service	3		0.000	0	0	0.000
				ROOTS 1449 NORTH TOPEKA						
21		131.8	West	Break-In Conn	1		0.000	0	0	0.000
				1442 N BROADWAY / PVC						
22		134.0	East	Sealed Off Wye Connection	1		0.000	0	0	0.000
23		153.2	Lower Left	Broken Pipe	3		0.000	0	0	0.000
24		156.0	Lower Left	Broken Pipe	4		0.000	0	0	0.000
25		156.3	West	Sealed Off Wye Connection	1		0.000	0	0	0.000
26		158.6	East	Sealed Off Wye Connection	1		0.000	0	0	0.000
27		163.9	Upper Right	Crack-Horizontal	2		0.000	0	0	0.000

6-3

Television Inspection Master Report

4/13/2007
3:40 PM

US Structure: 5549-182 329 E 14TH ST Date Insp: 11/29/2006 Basin: C03D
DS Structure: 5549-179 1430 N BROADWAY ST Dir Televised: Upstream To Downstream

28	165.9	Crown	Crack-Radial	3		0.000	0	0	0.000	
29	172.0	Upper Left	Broken Pipe	3		0.000	0	0	0.000	
30	178.8	Start	Sag	3		0.000	5	0	0.000	
31	181.1	West	Sealed Off Wye Connection	1		0.000	0	0	0.000	
32	183.5	East	Wye Service	1		0.000	0	0	0.000	
1445 N TOPEKA										
33	188.0	Camera Lens Submerged	Sag	4		0.000	10	0	0.000	
40	193.3		Observation Hole	1		0.000	0	0	0.000	
41	205.5	West	Wye Service	1		0.000	0	0	0.000	
1434 N Broadway										
42	207.9	East	Sealed Off Wye Connection	1		0.000	0	0	0.000	
43	221.0	Upper Left	Broken Pipe	3		0.000	0	0	0.000	
34	230.1	Camera Lens Emerged	Sag	3		0.000	5	0	0.000	
35	231.3	Camera Lens Submerged	Sag	3		0.000	5	0	0.000	
44	232.2	West	Sealed Off Wye Connection	1		0.000	0	0	0.000	
45	233.0	Upper Left	Broken Pipe	3						
36	234.0	Camera Lens Emerged	Sag	3						
46	234.3	East	Wye Sealed Off	1						
37	241.3	Camera Lens Submerged	Sag	3						
48	258.7	West	Tap	3						
ROOTS / 1430 N Broadway										
	259.0	East	Wye							
1433 N. Topeka										
38	272.3	Camera Lens Emerged	Sag	3						
49	281.0	West	Sealed Off Wye Connection	1		0.000	0	0	0.000	
50	282.0	East	Sealed Off Wye Connection	1		0.000	0	0	0.000	
51	283.5		PVC begins	1		0.000	0	0	0.000	
39	286.0		Stopped Inspection	3		0.000	0	0	0.000	
WE WILL USE A CLEANER TO PULL DOWN WATER										
52	286.2	DS Manhole	5549-176	1		0.000	0	0	0.000	

Poor grade. Needs replaced.

Television Inspection Master Report

4/13/2007
3:40 PM

US Structure: 5549-179
DS Structure: 5549-176

1430 N BROADWAY ST
310 E 13TH ST

Date Insp: 11/30/2006
Dir Televised: Upstream To Downstream

Basin: C03D

Pipe Information

Shape: Round Length Status: PVC Project No.: A-187
Dia/Ht Width: 8 Material: Index:
Length: 288.7 Slope: 0.280 Surface: Alley Unpaved

Inspection Information

Crew: 694 Percent Full: Tape ID: DVD #0212
Weather: Sunny Purpose: TV Existing Line Counter Start:
Surface Cond: N/A Flow: Normal Flow Counter Stop:

Obs. #	VTR Counter	Distance	Location	Description	Rating	Obsrvd (gpm)	Est. (gpm)	Ratings		Remain (gpm)
								Struct	Clean	
1		0.0	US Manhole	5549-179	1		0.000	0	0	0.000
			PVC runs through MH bottom and out to south							
2		4.0		PVC ends & VCP begins	1		0.000	0	0	0.000
3		19.5	Upper Right	Broken Pipe	3		0.000	0	0	0.000
4		20.5	West	Wye Service	3		0.000	0	0	0.000
			BROKEN PIPE, APPEARS ABANDON / Not sealed at the main (faces 1430 N. Broadway) Active?							
5		22.0	Upper Right	Crack-Radial	3		0.000	0	0	0.000
6		23.0	East	Wye Service	3		0.000	0	0	0.000
			ROOTS / 1425 N. Topeka							
55		28.0	Start	Sag begins	3		0.000	5	0	0.000
7		33.9	Upper Right	Crack-Radial	3		0.000	0	0	0.000
56		43.0		Sag	4		0.000	10	0	0.000
			40% FLOW (water on camera lens)							
8		45.0	West	Sealed Off Wye Connection		1	0.000	0	0	
57		46.2	End	Sag ends	1		0.000	1	0	0.000
9		47.0	East	Wye Service	1		0.000	0	0	0.000
			1421 N. Topeka / Roots							
31		59.0	West	Sealed Off Wye Connection		3	0.003	0	0	
			ROOTS							
10		67.5	Joint	Offset	2		0.000	0	0	0.000
11		69.6	West	Wye Service	1		0.000	0	0	0.000
			1416 N. Broadway							
12		71.9	East	Sealed Off Wye Connection		1	0.000	0	0	
13		92.0		OH	1		0.000	0	0	0.000
14		94.2	West	Wye Service	1		0.000	0	0	0.000
			APPEARS ABANDON / Not sealed at the main							
15		96.2	East	Sealed Off Wye Connection		1	0.000	0	0	
16		111.5	Upper Left	Broken Pipe	3		0.000	0	0	0.000
17		113.5	Lower Left	Broken Pipe	3		0.000	0	0	0.000
18		118.8	West	Wye Service	1		0.000	0	0	0.000
			APPEARS ABANDON / Not sealed at the main							
19		118.8	Lower Left	Broken Pipe	3		0.000	0	0	0.000
20		120.7	East	Wye Service	3		0.000	0	0	0.000
			BROKEN PIPE, PIECE MISSING / 1417 N. Topeka / NEEDS REPAIR / BREAKING AWAY FROM THE MAIN							
21		143.9	Invert	Crack-Radial	3		0.000	0	0	0.000
22		145.3	West	Wye Service	1		0.000	0	0	0.000
			APPEARS ABANDON / Not sealed at the main (dirt entering main)							

6-5

Television Inspection Master Report

4/13/2007
3:40 PM

US Structure: 5549-179 1430 N BROADWAY ST Date Insp: 11/30/2006 Basin: C03D
DS Structure: 5549-176 310 E 13TH ST Dir Televised: Upstream To Downstream

23	147.0	East	Sealed Off Wye Connection	1	0.000	0	0
24	159.8	Lower Left	Crack-Radial	3	0.000	0	0.000
25	169.3	West	Wye Service	1	0.000	0	0.000
POSSIBLY NOT IN USE / Not sealed at the main / faces 1410 N. Broadway / double check this							
26	171.5	East	Wye Service	4	0.000	0	0.000
ROOTS 1415 NORTH TOPEKA							
27	174.2	Upper Right	Broken Pipe	3	0.000	0	0.000
28	190.3	Upper Left	Broken Pipe	3	0.000	0	0.000
29	191.3		OH	1	0.000	0	0.000
30	191.6	Crown	Crack-Horizontal	3	0.000	0	0.000
	193.0	West	Wye sealed off				
32	195.8	East	Sealed Off Wye Connection	3	0.003	0	0
ROOTS							
33	207.0	Crown	Crack-Horizontal	3	0.000	0	0.000
34	209.0	Crown	Crack-Horizontal	3	0.000	0	0.000
35	218.1	West	Wye Service	3	0.000	0	0.000
ROOTS 1410 NORTH BROADWAY							
36	220.0	Upper Right	Broken Pipe	5	0.000	0	0.000
PIECE MISSING (hole near the invert)							
37	220.6	East	Wye Service	1	0.000	0	0.000
1407 N Topeka							
38	233.0	Lower Left	Broken Pipe	3	0.000	0	0.000
39	239.2	Upper Left	Broken Pipe	2	0.000	0	0.000
40	242.2	West	Sealed Off Wye Connection	1	0.000	0	0
41	244.0	East	Sealed Off Wye Connection	3	0.003	0	0
ROOTS							
42	245.0		PVC begins	1	0.000	0	0.000
43	256.0		PVC ends	1	0.000	0	0.000
44	258.9	Lower Right	Broken Pipe	4	0.000	0	0.000
45	260.2	West	Wye Service	1	0.000	0	0.000
APPEARS ABANDON / Not sealed at the main							
46	263.0	Lower Left	Broken Pipe	3	0.000	0	0.000
47	265.0	Upper Left	Broken Pipe	3	0.000	0	0.000
48	266.1	West	Wye Service	1	0.000	0	0.000
POSSIBLY ABANDON / Not sealed at the main							
49	268.1	East	Sealed Off Wye Connection	1			
50	273.0	Upper Left	Broken Pipe	4	0.000	0	0.000
51	285.1	Upper Left	Broken Pipe	3	0.000	0	0.000
52	286.5	West	Sealed Off Wye Connection	1	0.000	0.000	0
53	288.0	Crown	Broken Pipe	4	0.000	0	0.000
PIPE IS SHIFTING RIGHT AT THE MANHOLE WALL							
54	290.2	DS Manhole		1	0.000	0	0.000
BRICK TROUGH IN THE MANHOLE / NEED TO RECONSTRUCT THIS MANHOLE							

WE WILL TELEWISE SAGS WITHOUT CLEANER