

JACQUELINE

ST JAMES

7-1

MH # 5948-071
Replace Manhole Frame & Cover
Remove & Replace Manhole Bench & Invert
Approx depth = 7.8 ft

Remove and Replace 486 lf of 8" pipe
from MH 5948-072 to MH 5948-061

MH # 5948-072
Replace Manhole Frame & Cover
Approx depth = 6.0 ft

8TH ST.

MH # 5948-073
Approx depth = 9.0 ft

6501 E.
8th St.

811 N.
Mission

MISSION

WOODLAWN

239'

238'

248'

200'

6512 E.
Marjorie

MARJORIE

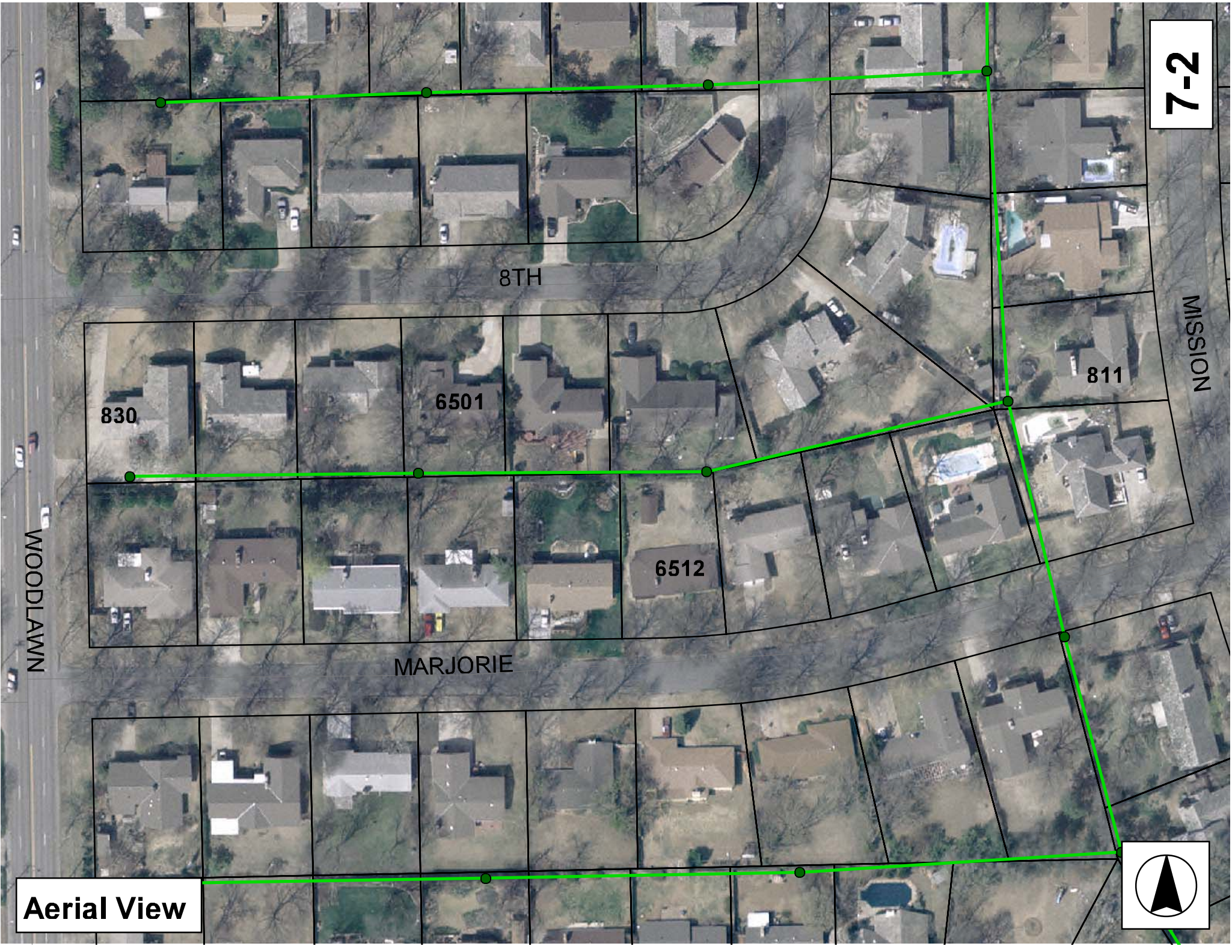
Point Repair:
Remove and replace 10 lf of 8" pipe from
MH 5948-072 to 10 lf west of MH 5948-072

MH # 5948-061
Replace Manhole Frame & Cover
Remove & Replace Manhole Bench & Invert
Construct Outside Drop for line coming into
manhole from the west
Approx pipe depth = 7.8 ft
Approx manhole depth = 11.5 ft

SITE 7



7-2



WOODLAWN

8TH

830

6501

6512

811

MISSION

MARJORIE

Aerial View



Television Inspection Master Report

3/30/2007
7:40 AM

US Structure: 5948-073 830 N WOODLAWN BLVD Date Insp: 2/15/2007 Basin: E01H
DS Structure: 5948-072 6501 E 8TH ST Dir Televised: Up->Down

Pipe Information

Shape: Round Project No.: H-007 Dia: 8 Material: VCP Length: 238.7 Slope: 0.402

Inspection Information

Crew: Percent Full: Tape ID:
Weather: Sunny Purpose: TV Existing Line Counter Start:
Surface Cond: Trees & Fences Flow: Normal Flow Counter Stop:

Obs. #	VTR #	Counter	Distance	Location	Description	Rating	Obsrvd (gpm)	Est. (gpm)	Ratings Struct	Clean	Remain (gpm)
1			0.0	US Manhole 5948-073	(NOTE: large concrete pad for RV parking is over the sewer line)						
			1.0	Offset Joint							
2			14.0	North	Wye Service	4					
				ROOTS 830 NORTH WOODLAWN							
3			17.0		Sealed Off Wye South	1					
4			18.0	Joint	Roots	3					
5			28.0	Upper Left	Broken Pipe	3					
6			31.0	Crown	Broken Pipe	3					
7			34.0	Crown	Crack-Horizontal	3					
8			36.0	Crown	Crack-Horizontal	3					
9			40.0	Joint	Roots	3					
10			40.0	Crown	Broken Pipe	3					
11			43.0	Crown	Broken Pipe	4					
12			44.0	South	Break-In Conn / Roots	5					
13			45.0	Crown	Broken Pipe	4					
14			52.0	Joint	Roots	3					
15			55.0	Joint	Roots	3					
16			58.0	Joint	Roots	3					
17			114.0		Wye Service	1					
18			117.0		Wye Service / Roots	5					
19			168.0		Sealed Off Wye North	1					
20			201.0		Break-In Conn	3					
				ROOTS 6409 EAST 8TH ST. NORTH							
21			205.0	South	Wye Service	5					
				ROOTS 6420 EAST MAJORIE							
22			238.0	Joint	Offset	4					
23			238.0	DS Manhole		1					
24			238.0		Stopped Inspection	5					

NOTE:
The video skips from 205' to 228' so we do not see that 23' of pipe on the video.

DUE TO BAD OFFSET WE WILL REVERSE SET-UP

REVERSE SETUP:

Obs. #	VTR #	Counter	Distance	Location	Description	Rating	Obsrvd (gpm)	Est. (gpm)	Ratings Struct	Clean	Remain (gpm)
1			0.0	DS Manhole 5948-072	TELEVISIONING AGAINST THE FLOW						
					WE WILL TELEVISION APROX 3 FT TO FINISH LINE						
3			3.0	Joint	Offset	5					
					BROKEN PIPE / Stopped Inspection						
					STOPPED DUE TO OFFSET & BROKEN PIPE / TOTAL DISTANCE FOR LINE IS 239 FT						

POINT REPAIR REPLACE THE DOWNSTREAM 10 LF OF PIPE TO CORRECT THE OFFSET JOINT SO CIPP CAN BE INSTALLED

7-3

Television Inspection Master Report

3/30/2007
7:40 AM

US Structure: 5948-072 6501 E 8TH ST Date Insp: 2/16/2007 Basin: E01H
DS Structure: 5948-071 6520 E MARJORIE LA Dir Televised: Upstream To Downstream

Pipe Information

H-007

Shape: Round Length Status: Project No.:
Dia/Ht Width: 8 0 Material: VCP Index:
Length: 236.2 Slope: 0.403 Surface:

Inspection Information

DVD #0247

Crew: 694 Percent Full: Tape ID:
Weather: Sunny Purpose: TV Existing Line Counter Start:
Surface Cond: Trees & Fences Flow: Normal Flow Counter Stop:

Obs. #	VTR Counter Comment	Distance	Location	Description	Rating	Obsrvd (gpm)	Est. (gpm)	Ratings Struct	Clean	Remain (gpm)
1		0.0	US Manhole 5948-072		1	0.000	0.000	0	0	0.000
2		1.5	Crown	Broken Pipe	4	0.030	0.030	78	0	0.030
3		14.0		Sealed Off Wye North	1	0.000	0.000	0	0	0.000
4		17.0	Crown	Crack-Horizontal	3	0.004	0.004	5	0	0.004
5		44.0	North	Break-In Conn	3	0.004	0.004	2	0	0.004
ROOTS AROUND OUTSIDE OF CONNECTION / 6501 E 8th										
14		49.2	Start	Sag	3	0.000	0.000	5	0	0.000
6		55.0	Lower Left	Broken Pipe	3	0.010	0.010	60	0	0.010
7		59.0	South	Wye Service	1	0.000	0.000	0	0	0.000
6428 E. Marjorie										
8		62.0	Crown	Crack-Horizontal	3	0.004	0.004	5	0	0.004
9		80.0		Sealed Off Wye North	1	0.000	0.000	0	0	0.000
10		126.0	Crown	Broken Pipe	4	0.030	0.030	78	0	0.030
11		127.0		Break-In Conn	3	0.004	0.004	2	0	0.004
ROOTS 6505 EAST 8TH ST. NORTH										
12		139.0	South	Wye Service	1	0.000	0.000	0	0	0.000
6504 E. Marjorie										
13		153.0	Lower Left	Crack-Horizontal	3	0.004	0.004	5	0	0.004
15		163.0		Sealed Off Wye North	1	0.000	0.000	0	0	0.000
16		170.0	End	Sag	1	0.000	0.000	1	0	0.000
17		193.0	Crown	Crack-Horizontal	3	0.004	0.004	5	0	0.004
18		214.0	Joint	Roots	3	0.008	0.008	5	8	0.008
19		222.0	Start	Sag	2	0.000	0.000	2	0	0.000
20		224.0		Break-In Conn	1	0.001	0.001	0	0	0.001
6512 E. Marjorie										
21		231.0	End	Sag	1	0.000	0.000	1	0	0.000
22		238.0	DS Manhole 5948-071		1	0.000	0.000	0	0	0.000
INSIDE DROP MANHOLE										

The sags are fairly bad and hold debris.

MH 5948-071 can be accessed from 6512 E. Marjorie and it is located between a wooden privacy fence and a chain link fence.

NOTE: Several of these yards in the east 1/2 of the block have very poor backyard drainage (some with standing water the day we were there).

7-4

Television Inspection Master Report

3/30/2007
7:40 AM

US Structure: 5948-071
DS Structure: 5948-061

6520 E MARJORIE LA
811 N MISSION RD

Date Insp: 2/16/2007
Dir Televised: Upstream To Downstream

Basin: E01H

Pipe Information

H-007

Shape: Round Length Status: Project No.:
Dia/Ht Width: 8 0 Material: VCP Index:
Length: 248.4 Slope: 0.391 Surface:

Inspection Information

DVD #0247

Crew: 694 Percent Full: Tape ID:
Weather: Sunny Purpose: TV Existing Line Counter Start:
Surface Cond: Trees & Fences Flow: Normal Flow Counter Stop:

Obs. #	VTR Counter Comment	Distance	Location	Description	Rating	Obsrvd (gpm)	Est. (gpm)	Ratings		Remain (gpm)
								Struct	Clean	
1		0.0	US Manhole 5948-071		1	0.000	0	0	0.000	
2		0.0	Joint	Roots / Holds paper	3	0.008	5	8	0.008	
3		20.0	North	Wye Service	1	0.000	0	0	0.000	
4	900 N. St. James	23.0	South	Wye Service	1	0.000	0	0	0.000	
	6520 E. Marjorie / SMALL OFFSET IST JOINT IN									
5		34.0	Upper Left	Crack-Horizontal	3	0.004	5	0	0.004	
6		35.0		Crack-Horizontal	3	0.004	5	0	0.004	
7		40.0	Crown	Crack-Horizontal	3	0.004	5	0	0.004	
8		46.0	Crown	Broken Pipe	3	0.010	60	0	0.010	
9		51.0	Lower Left	Broken Pipe	3	0.010	60	0	0.010	
10		55.0	Joint	Roots	3	0.008	5	8	0.008	
11		57.0	Joint	Roots	3	0.008	5	8	0.008	
12		61.0	Joint	Roots	3	0.008	5	8	0.008	
13		65.0	Joint	Roots	3	0.008	5	8	0.008	
14		67.0	Upper Left	Crack-Horizontal	3	0.004	5	0	0.004	
15		69.0		Crack-Horizontal	3	0.004	5	0	0.004	
16		73.0		Crack-Horizontal	3	0.004	5	0	0.004	
17		96.0	Crown	Crack-Horizontal	3	0.004	5	0	0.004	
25		101.1	Start	Sag	2	0.000	2	0	0.000	
18		104.0		Debris	4	0.000	0	25	0.000	
19		107.0	Crown	Broken Pipe	4	0.030	78	0	0.030	
20		109.0	Upper Left	Broken Pipe	4	0.030	78	0	0.030	
22		109.0		Collapsed Pipe	5	0.100	400	0	0.100	
21		110.0	North	Tap / Collapsed Pipe	5	0.100	400	0	0.100	
	902 St. James / COLLAPSED PIPE AROUND CONNECTION and located in a sag area									
23		110.0		Stopped Inspection	5	0.000	0	0	0.000	

STOPPED INSPECTION DUE TO BROKEN PIPE / SEE REVERSE SETUP FOR REMAINDER OF LINE

7-5

Television Inspection Master Report

3/30/2007
7:40 AM

US Structure: 5948-071
DS Structure: 5948-061

6520 E MARJORIE LA
811 N MISSION RD

Date Insp: 2/16/2007
Dir Televised: Downstream To Upstream

Basin: E01H

REVERSE SETUP:

Obs. #	VTR Counter	Distance	Location	Description	Rating	Obsrvd (gpm)	Est. (gpm)	Ratings Struct	Clean	Remain (gpm)
1		0.0	DS Manhole	5948-061	1		0.000	0	0	0.000
			TELEVISIONING AGAINST THE FLOW							
3		2.0		Crack-Horizontal	3		0.004	5	0	0.004
4		20.0	Joint	Roots	2		0.004	2	4	0.004
5		29.0	South	Sealed Off Wye	1		0.000	0	0	0.000
6		33.0	Start	Sag	3		0.000	5	0	0.000
11		42.0	Crown	Crack-Horizontal	3		0.004	5	0	0.004
10		45.0	Crown	Broken Pipe	3		0.010	60	0	0.010
9		66.0		Broken Pipe	3		0.010	60	0	0.010
8		89.0	North	Sealed Off Wye North	1		0.000	0	0	0.000
7		101.0		Stopped Inspection	5		0.000	0	0	0.000

DUE TO TILE / MUST OPEN CUT REPAIR

NOTE: STILL NOT A COMPLETE TELEVISIONING OF THE LINE

7-6