



Defect Listing Plot

Pipe Segment Refere... 17	City WICHITA	Street MCLEAN BLVD	Material PolyVinyl Chloride	Location C... Easement/R...	Sewer Use Stormwater
Upstream MH 3+95.05	Total Length	Up Rim to Invert 12	Shape Circular	Location Details LINE 0	
DS Manhole 3+44.32	Length surveyed 48.3	Down Rim to Invert 12	Height 18	Width 18	Pipe Joint...
SPR 0	MPR 0	PO Number 0562 PPD 133119		Customer DONDLINGER	
SPRI 0	MPRI 0	Work Order		Purpose Pre-Acceptance	
QSR 0000	QMR 0000	Direction Upstream	Date 20200130	Media label	
OPR 0	Surveyed By Javier	Pre-Cleaning Heavy Cleaning	Time 12:50	Weather Saturated	
OPRI 0	Certificate Number U-0118-070300429	Date Cleaned 20200130	End Time 12:53	Additional Info TV14	

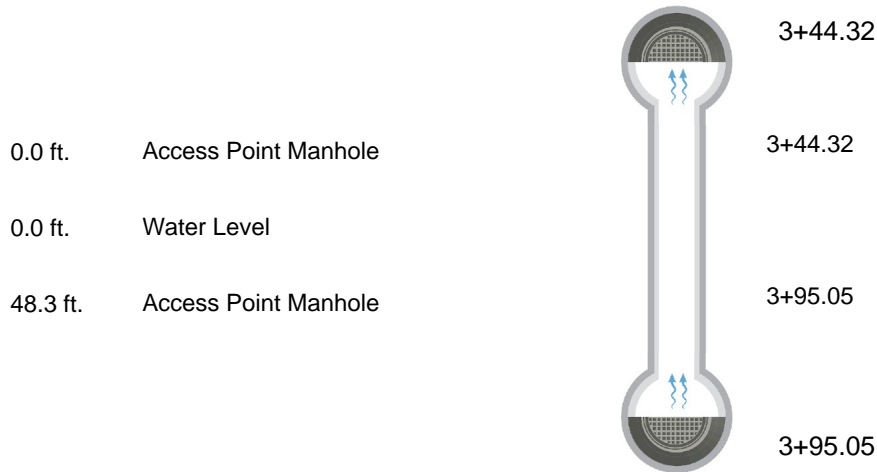
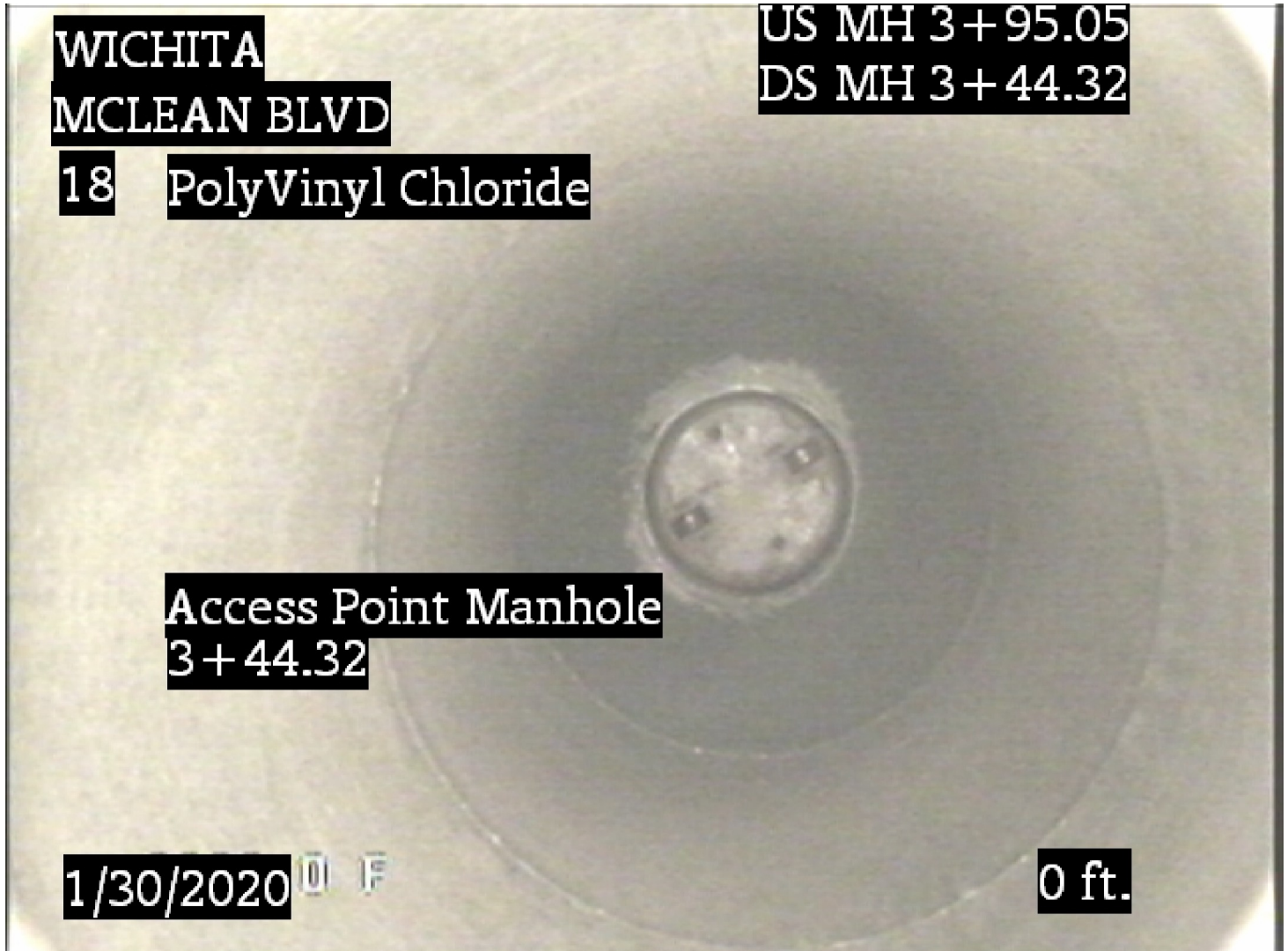




Image Report 1/Page

Pipe Segment Refere... 17	City WICHITA	Street MCLEAN BLVD	Material PolyVinyl Chloride	Location C... Easement/R...	Sewer Use Stormwater
Upstream MH 3+95.05	Total Length	Up Rim to Invert 12	Shape Circular	Location Details LINE 0	
DS Manhole 3+44.32	Length surveyed 48.3	Down Rim to Invert 12	Height 18	Width 18	Pipe Joint...

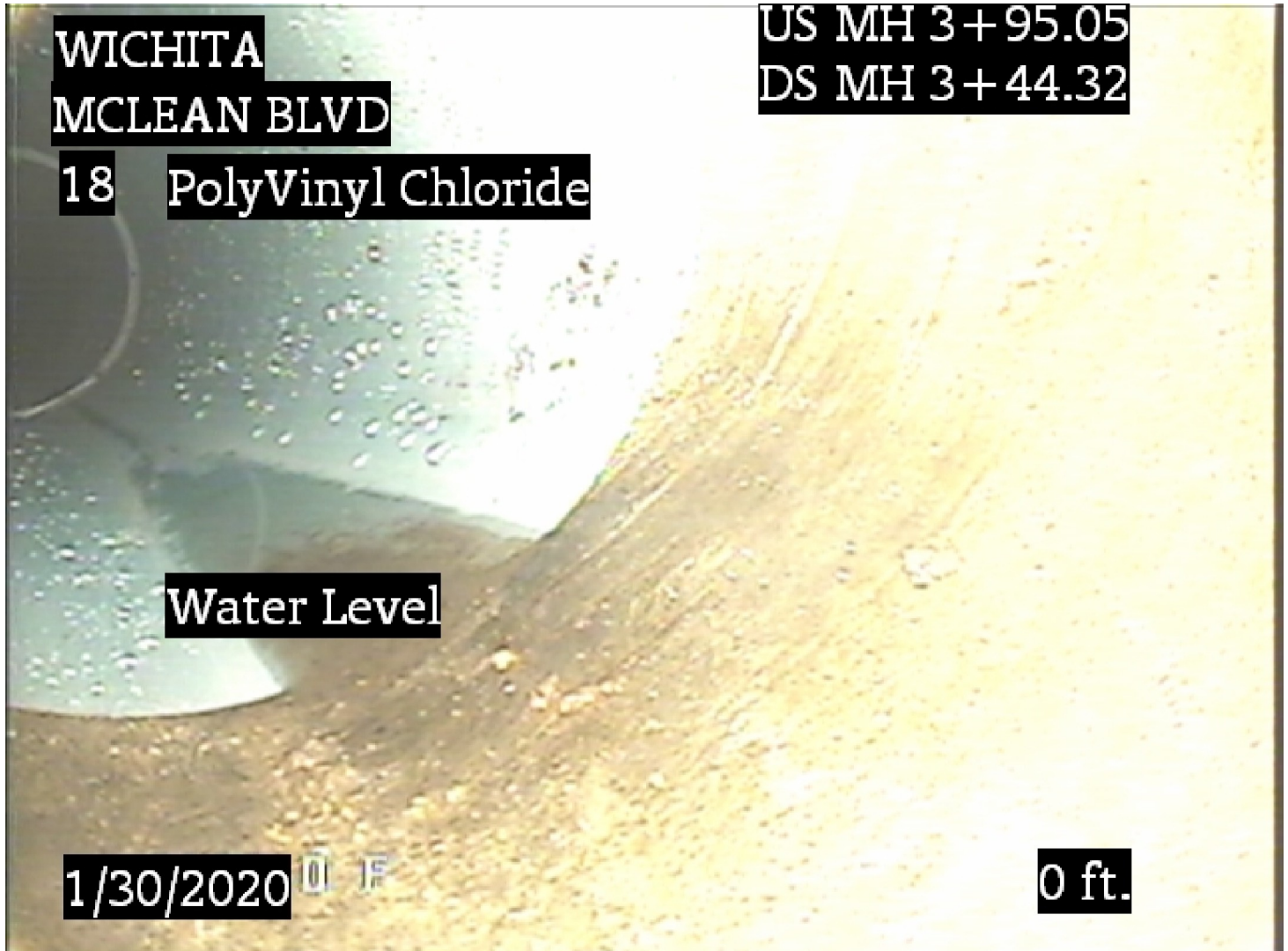


Distance:	0.0 ft.
Condition:	Access Point Manhole
Grade:	0
Remarks:	3+44.32



Image Report 1/Page

Pipe Segment Refere... 17	City WICHITA	Street MCLEAN BLVD	Material PolyVinyl Chloride	Location C... Easement/R...	Sewer Use Stormwater
Upstream MH 3+95.05	Total Length	Up Rim to Invert 12	Shape Circular	Location Details LINE 0	
DS Manhole 3+44.32	Length surveyed 48.3	Down Rim to Invert 12	Height 18	Width 18	Pipe Joint...

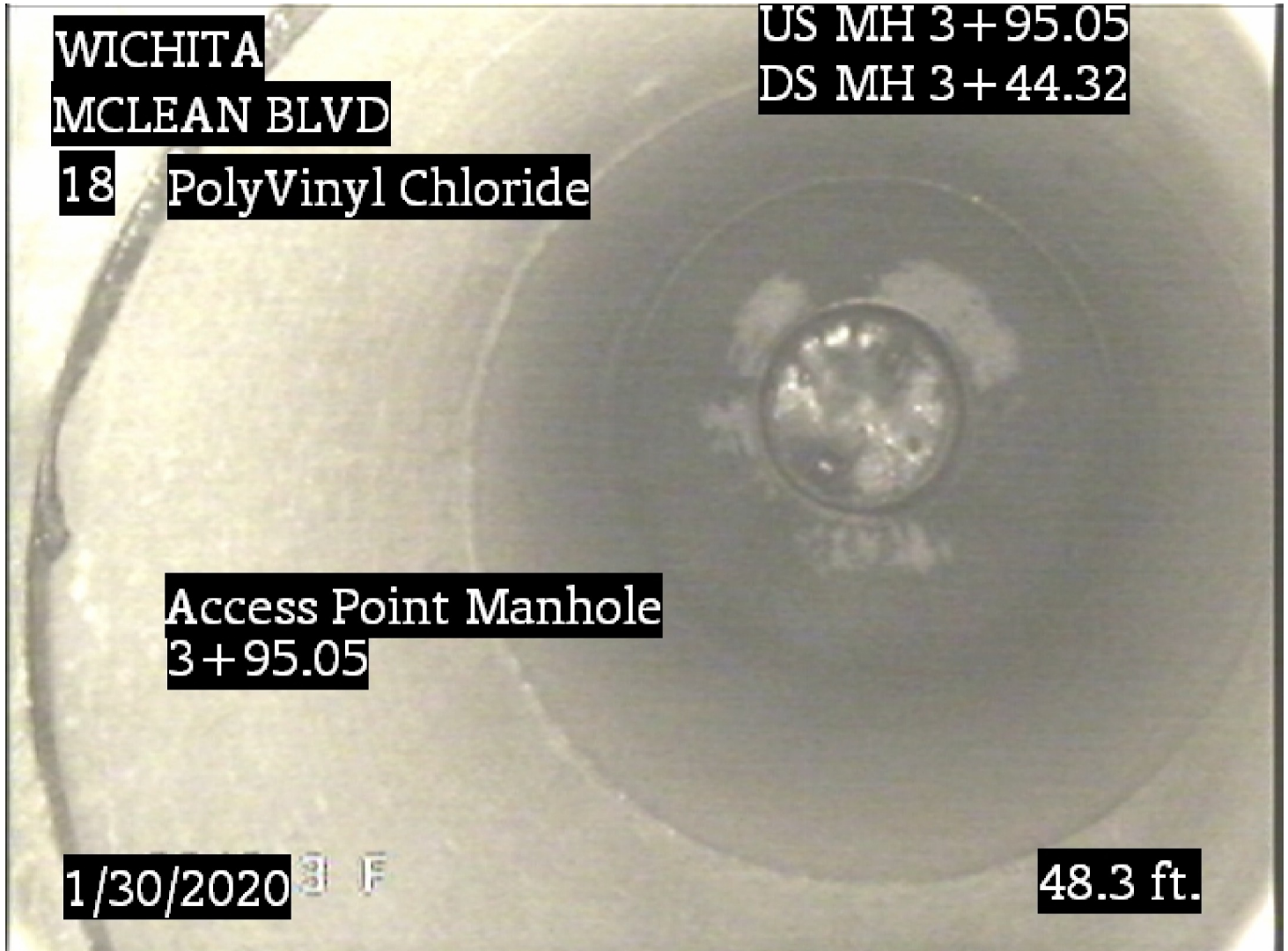


Distance:	0.0 ft.
Condition:	Water Level
Grade:	0
Remarks:	N/A



Image Report 1/Page

Pipe Segment Refere... 17	City WICHITA	Street MCLEAN BLVD	Material PolyVinyl Chloride	Location C... Easement/R...	Sewer Use Stormwater
Upstream MH 3+95.05	Total Length	Up Rim to Invert 12	Shape Circular	Location Details LINE 0	
DS Manhole 3+44.32	Length surveyed 48.3	Down Rim to Invert 12	Height 18	Width 18	Pipe Joint...



Distance:	48.3 ft.
Condition:	Access Point Manhole
Grade:	0
Remarks:	3+95.05