

**GENERAL NOTES:**

- The Contractor shall comply with all applicable safety regulations. All construction shall be completed following current City Standard Specifications and Special Provisions.
- Contractor will be required to provide notice to utility companies a minimum of seventy-two (72) hours prior to any excavation, as follows:  
Kansas One-Call 687-2470  
The Contractor must notify the following in case of an emergency:  
AT&T 1-800-246-6464  
Black Hills Energy 1-800-694-8989  
City of Wichita Water & Sewer 1-316-219-8921  
City of Wichita Stormwater 1-316-268-4090  
City of Wichita Traffic 1-316-268-4034  
Cox Communications 1-888-249-3530  
Kansas Gas Service 1-888-482-4950  
Westar Energy 1-800-544-4857
- Utility service lines, poles, valve boxes, meters, and etcetera are to be adjusted as necessary by others prior to construction unless the plans specifically call for their adjustment by the Contractor or unless the plans specifically identify a utility to be adjusted by its owner during construction. Existing utilities and their location, as shown on the plans, represent the best information obtainable for design. The Contractor will be required to work around existing utilities within the right-of-way which do not conflict with proposed construction.
- Rubble from the removal of miscellaneous structures and excess excavation which is to be wasted shall be disposed of on sites to be provided by the Contractor. These sites shall be approved by the Engineer as to suitability, appearance and site location. Locations, in the opinion of the Engineer, that will leave an unsightly appearance will not be approved. All disposal sites must be approved by the Kansas Department of Health and Environment. Material either stockpiled or disposed of in a flood plain would require a Kansas State Board of Agriculture permit. Any material dumped in waters of the United States or wetlands is subject to U.S. Corps of Engineers permitting regulations. Any material buried or stockpiled beyond approved construction limits would require additional archaeological investigations unless buried in a previously approved borrow location.
- Trees and shrubs in public right-of-way which are in direct conflict with proposed new construction shall be removed by the Contractor with the Engineer's approval. Trees and shrubs which are not in direct conflict with proposed new construction shall be saved and protected from damage.
- The Contractor shall give all property owners and/or tenants of developed property abutting the construction of this project a minimum of ten (10) days notice prior to start of construction.
- The Contractor shall be responsible for preserving property irons. The Contractor will be required to re-establish any property irons which are damaged or destroyed by his construction operations. Such irons shall be re-established by a licensed land surveyor in accordance with state laws.
- The Contractor shall notify the consultant engineer and Dawnita Reinhardt with the City at 316-650-0740 with the anticipated construction start date and notify them of project completion. Staking and inspection for this project will be the responsibility of the Contractor.
- If traffic is impacted by construction, a traffic control plan must be submitted and approved by the City Traffic Engineer, Mike Armour at [traffic@wichita.gov](mailto:traffic@wichita.gov) before construction can begin. The Contractor shall be responsible for all traffic control measures to facilitate construction. All construction zone markings and signage shall conform to the latest version of Manual on Uniform Traffic Control Devices (MUTCD) as published by the US Dept. of Transportation, Federal Highway Administration. All costs associated with construction markings and signage shall be the Contractors responsibility.
- All elevations shown are U.S.G.S. Datum (NAVD 88).
- All areas disturbed during construction that will not be under proposed pavement shall be restored to match existing conditions.
- Any sidewalk, drive approach, or street pavement removed to construct project must have a pavement cut permit and be replaced by the City contractor. Permits can be obtained by calling 316-268-4501 or 316-268-4480.
- City maintenance of storm sewer ends at the last structure in the easement or right-of-way.
- A portion of excess excavated material shall be mounded around manholes which extend more than one (1) foot above the existing ground. Such mound shall be constructed with new development a six (6) foot diameter flat top with 4 to 1 side slopes down to the original ground. The elevation of the flat top of the mound shall be 0.4 foot below the top to the manhole.
- Contractor shall limit the extent of trench open overnight and weekends to less than 50 feet.
- The inspecting firm shall submit to the City Stormwater Maintenance Division a digital copy of the CCTV inspection of the conduits and structures following construction. The digital file formation shall be compatible with the City input template. A copy of the template is available upon request at 316-268-4090.
- The Contractor shall protect from damage and support existing utilities through construction as approved by the utility owner and the Engineer at the contractor's expense.
- Contractor shall provide positive drainage away from all manhole covers.
- The Contractor shall not begin work on the project until the Project Inspector is assigned and on site. Any work completed without inspection will be required to be uncovered for inspection at the Contractor's expense.
- Structure location coordinates are to the center of structure and are to be located with a coordinate datum per the provided control points.

# STORM SEWER IMPROVEMENTS

to serve

## Hampton Square Second Addition

### Lot 9, Block 2, Wichita, KS 67101

Gary Janzen P.E. City Engineer  
Project Number  
PPD - 2021 - 000715 (113119)  
(56030970)  
3965 N Maize Rd

**AS BUILTS**

Contractor: **Ewertz Excavation**  
Project Inspector: **Larry Gann**

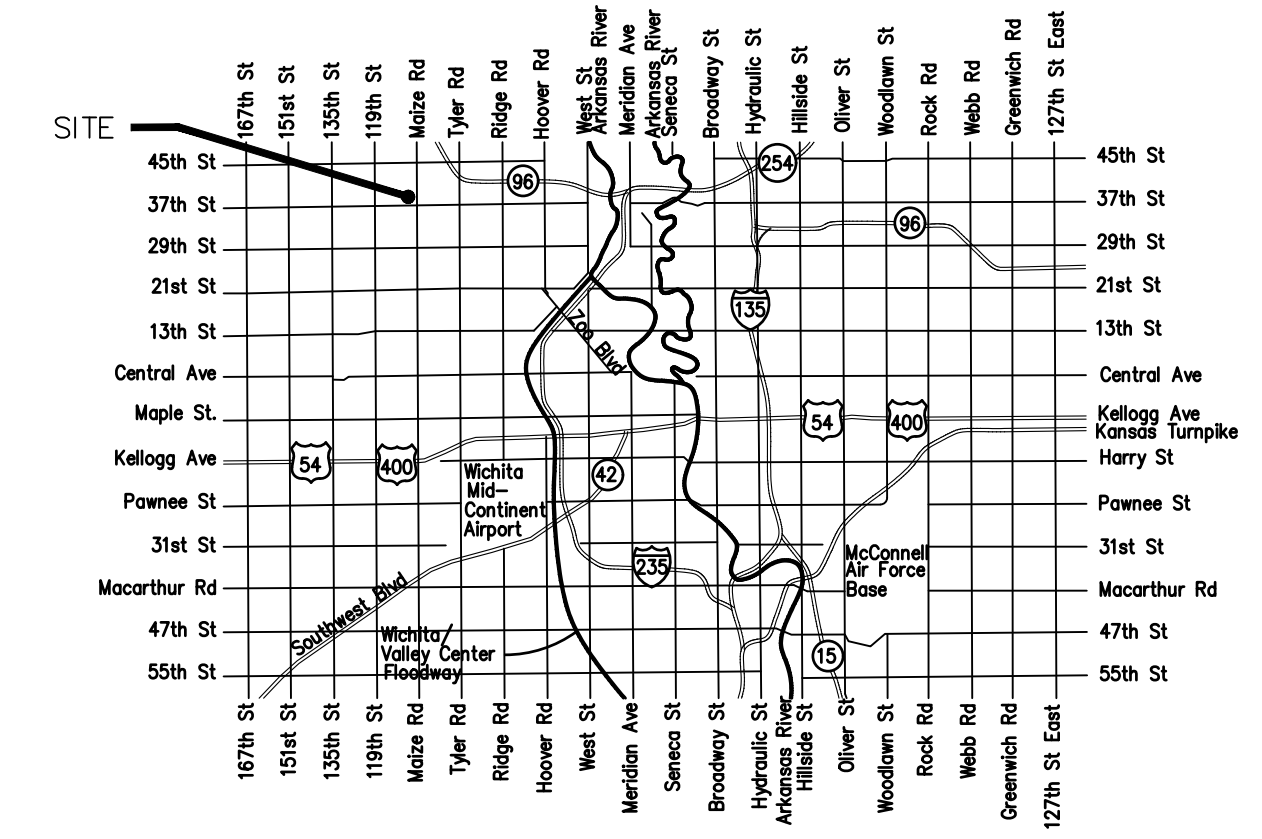
**KEMILLER ENGINEERING PA**  
117 E. Lewis, Wichita, KS 67202 (316)264-0242

3/4/2022

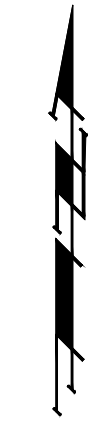
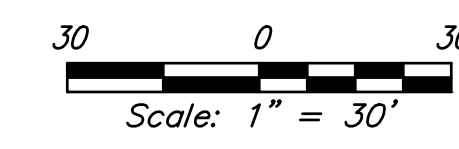
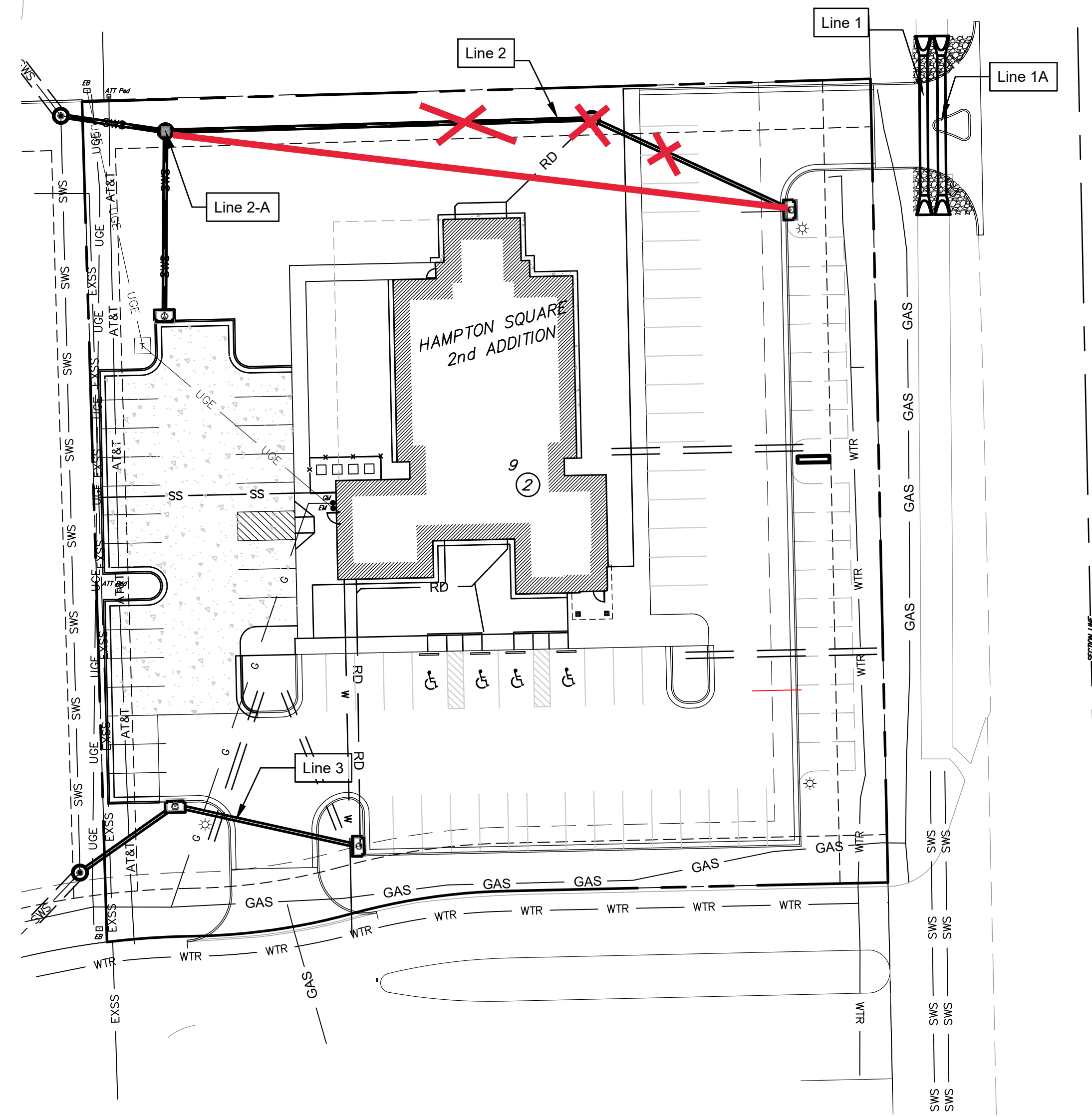
**SHEET INDEX:**

Title Sheet	1
SWS Line 1 & Line 1A Plan/Profile	2
SWS Line 2	3
SWS Line 2A & 3	4
Endsection Detail	5
Backyard Inlet Detail	6
Type 1 Curb Inlet Detail	7
Erosion Control Plan	8
Copy of Plat	9

\*Current Stormwater Control Details are available at the City of Wichita web site: <http://www.wichita.gov/PWU/StandardsConstruction/Forms/WebPageStandardsConstruction.aspx>



VICINITY MAP



**Stormwater Certification:**

(New Development) or Redevelopment (Circle One)

Stormwater Permit # SWO2021-00XX

NOI Permit # S-AR94-1705

These construction plans were prepared in accordance with the current Stormwater management Regulations as set forth in the City of Wichita's Stormwater Management Ordinance 16.32 and the policies/guidelines presented in the Wichita/Sedgwick County Stormwater Manual.

Site Area (Acres) = 1.44 acres  
Disturbed Area (Acres) = 1.44 acres  
Water Quality Treatment: Offsite BMP Program  
Downstream Channel Protection: N/A  
Detention: N/A

The BMP used for this development is Curb Inlet Protection, Construction Entrance, Silt Fence, Area Inlet Protection

**APPROVED AS NOTED**  
**BY WICHITA PUBLIC WORKS ENGINEERING AND STORMWATER DIVISION**

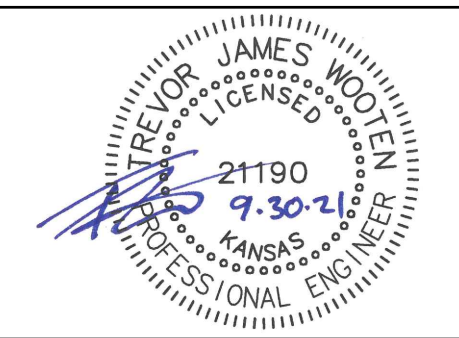
Engineering Approved by Ben Ferguson PE (09/30/2021)

Stormwater Approved by Joe Hickie PE (09/30/2021)

**NOTE TO CONTRACTORS**

Inspection and testing for this project is to be provided by a Licensed Consulting Engineering Firm under contract with the Owner/Developer. Said Inspection to be in accordance with the City of Wichita standard construction engineering practices and certified by a Licensed Professional Engineer in the state of Kansas. No work shall be performed the Contractor without such inspection nor shall any work be commenced without written authorization by the City Engineer. All Construction and Materials shall comply with the current City of Wichita Specifications and Standards and Special Provisions. (on file and available at Wichita.gov).

An approved copy of these plans signed by City staff are required on-site.



**BAUGHMAN COMPANY**  
315 Ellis St. Wichita, KS 67211 316-262-7271  
BaughmanCo.com

E:\Projects\Delmer Detail (21-07\_E5062)\Engineering\Phase 1\PPD\Delmer Detail PPD PLAN.dwg

# BENCHMARKS

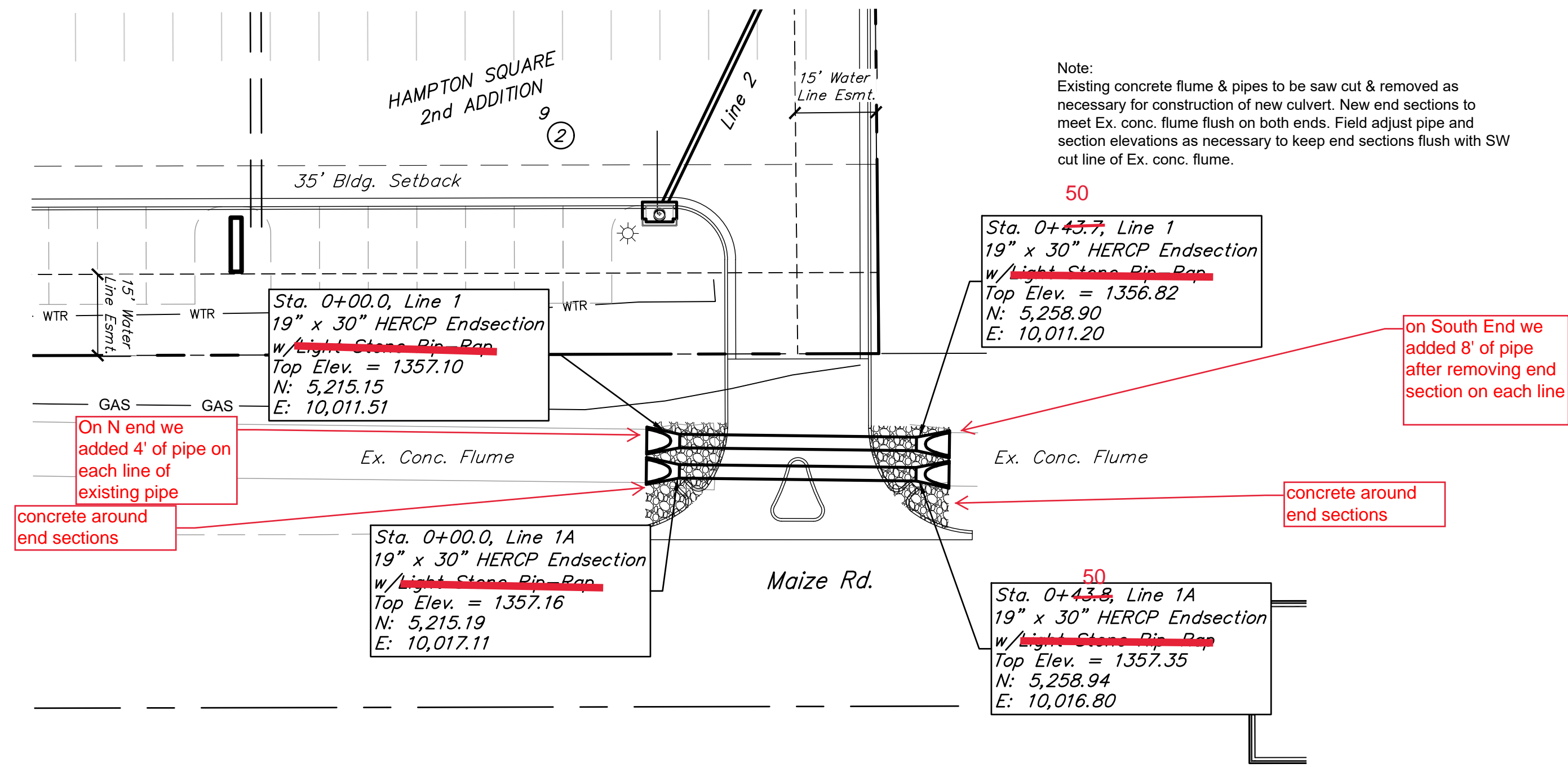
Site Benchmark - 1  
 "X" chiseled on NW corner of curb inlet on Havenhurst St., West of SW property corner.  
 Elevation = 1357.24 (NAVD 88)

Site Benchmark - 2  
 "X" chiseled on top of curb, North side of Havenhurst St., West of SE property corner.  
 Elevation = 1357.53 (NAVD 88)

## AS BUILTS



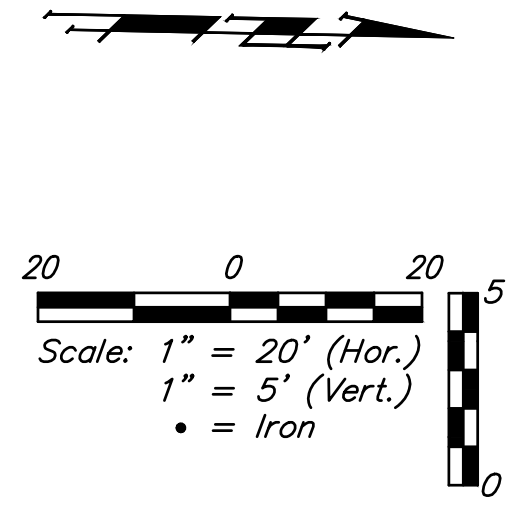
**KEMILLER**  
ENGINEERING PA  
117 E. Lewis,  
Wichita, KS 67202 (316)264-0242



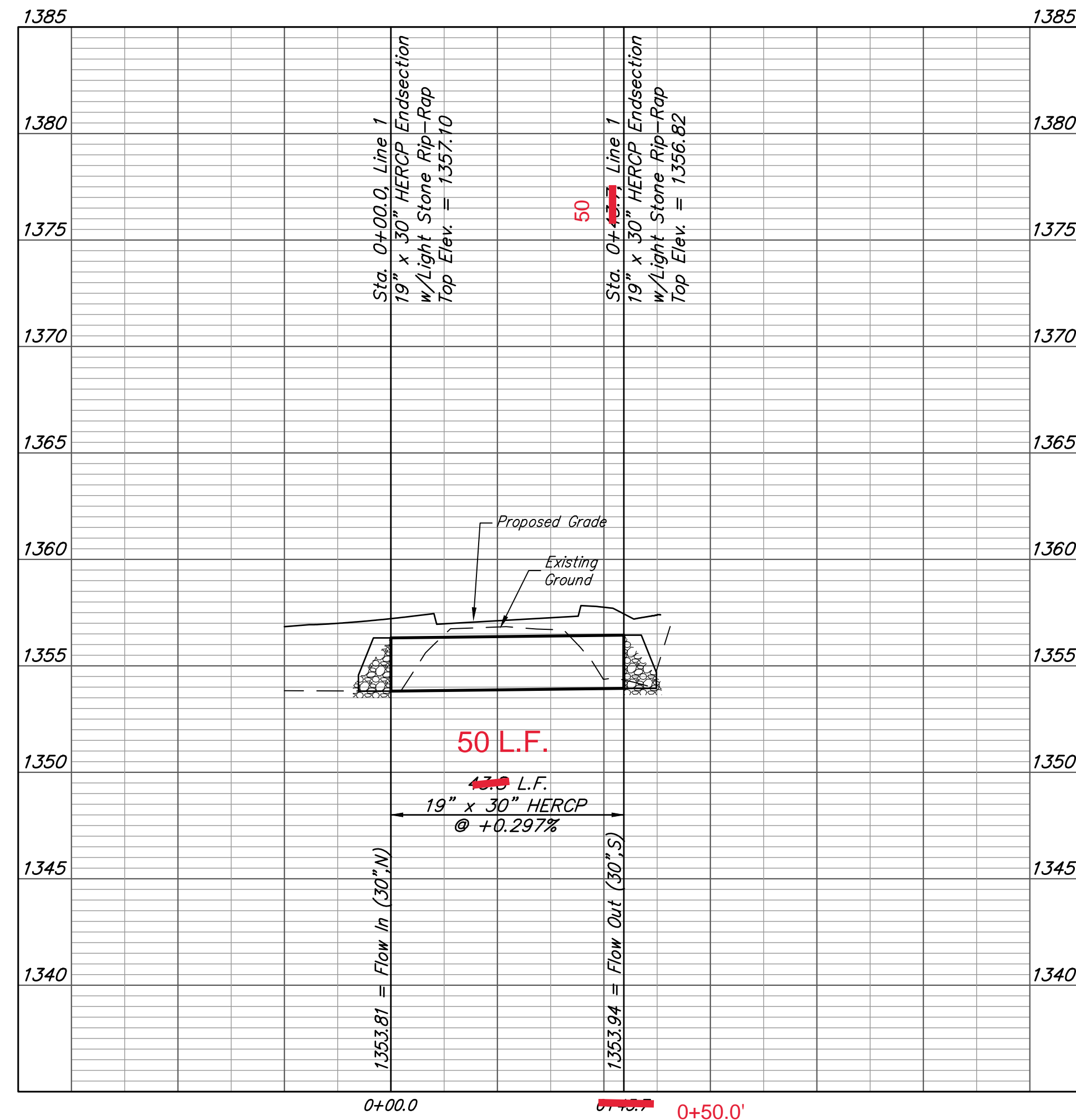
# AS BUILTS



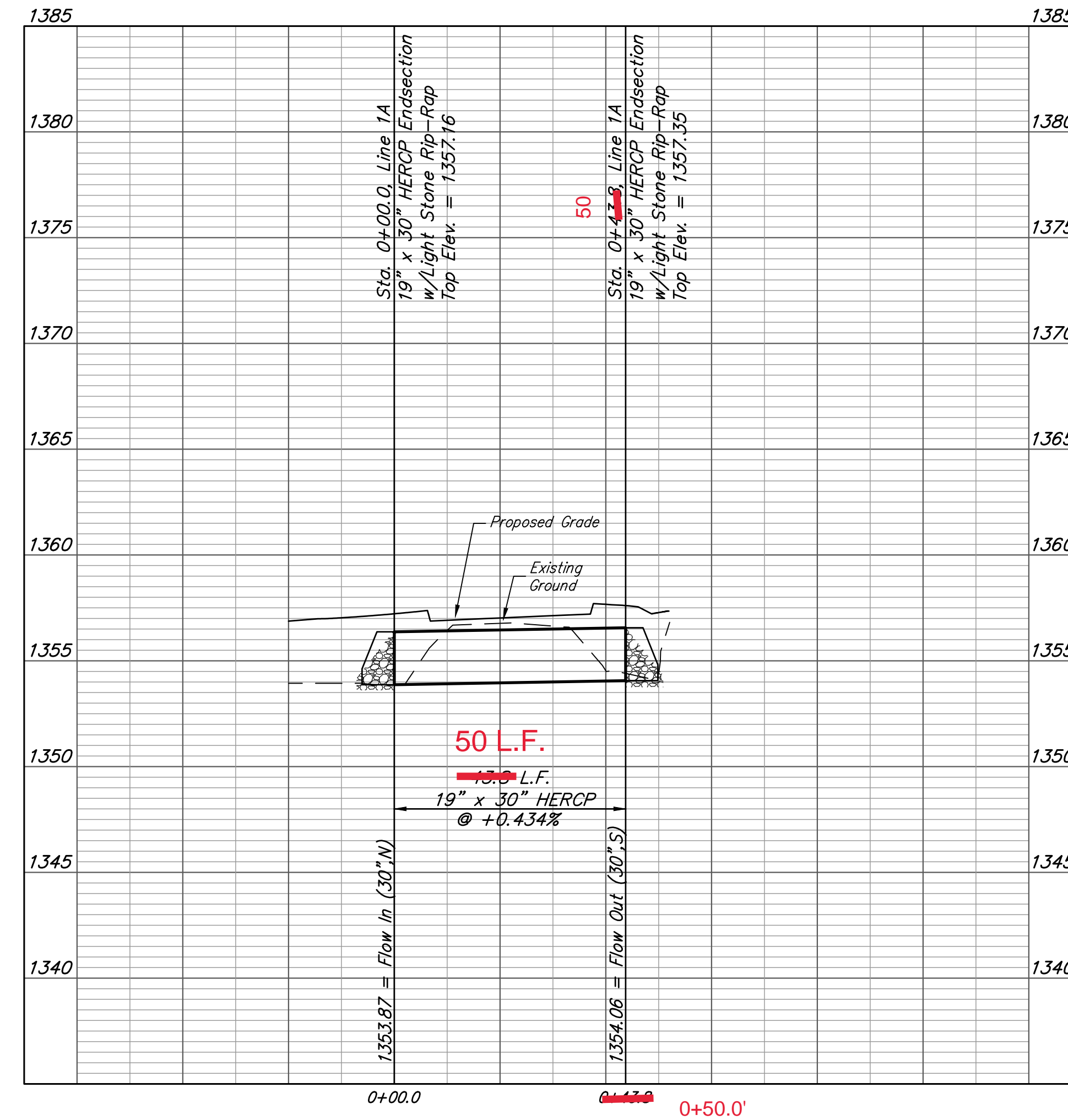
**KEMILLER**  
ENGINEERING PA  
117 E. Lewis,  
Wichita, KS 67202 (316)264-0242



### LINE 1



### LINE 1A




**BAUGHMAN COMPANY**  
 315 Ellis St.  
 Wichita, KS 67211  
 316-262-7271  
 BaughmanCo.com

Hampton Square Second  
**SWS Line 1 & SWS Line 1A**

Stormwater Sewer Improv.

PROJECT NUMBER:  
21-07-E962

DESIGN: ENG DRAWN: JA

DATE: Sep. 1, 2021

SHEET **2** OF **9**


File: E:\Projects\Detmer - Dental (21-07-E962)\Engineering\Phase 1\PPD\Detmer - Dental PPD PLAN.dwg

# BENCHMARKS

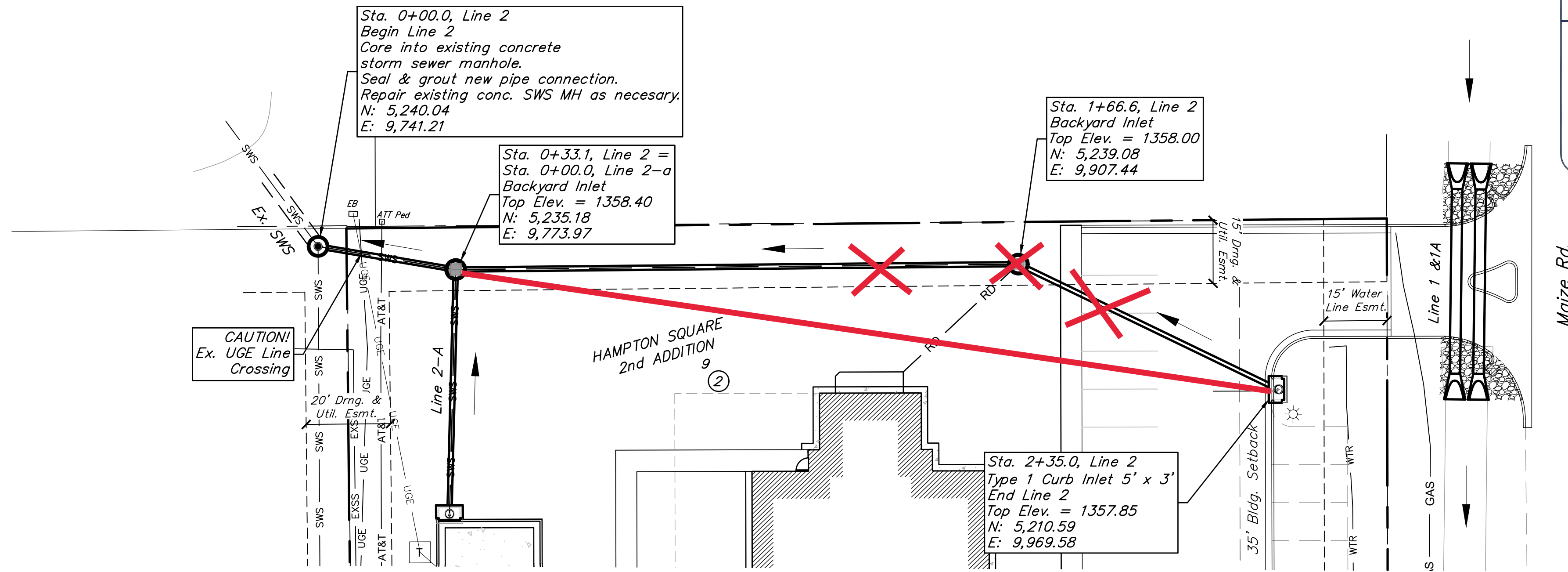
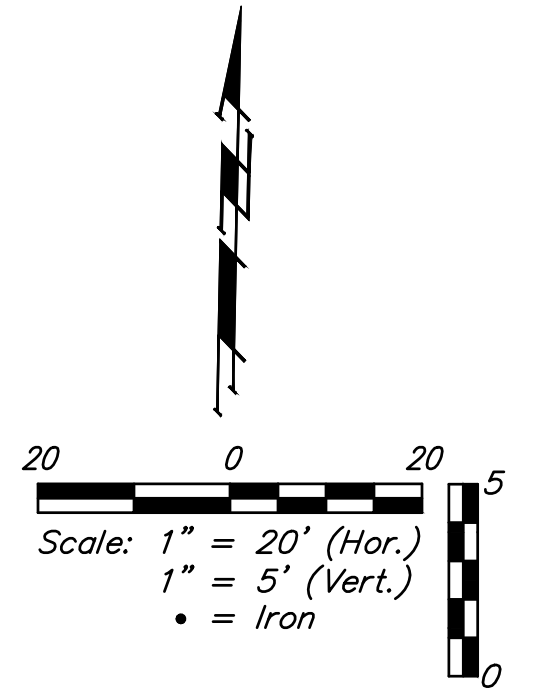
Site Benchmark - 1  
 "X" chiseled on NW corner of curb inlet on Havenhurst St., West of SW property corner.  
 Elevation = 1357.24 (NAVD 88)

Site Benchmark - 2  
 "X" chiseled on top of curb, North side of Havenhurst St., West of SE property corner.  
 Elevation = 1357.53 (NAVD 88)

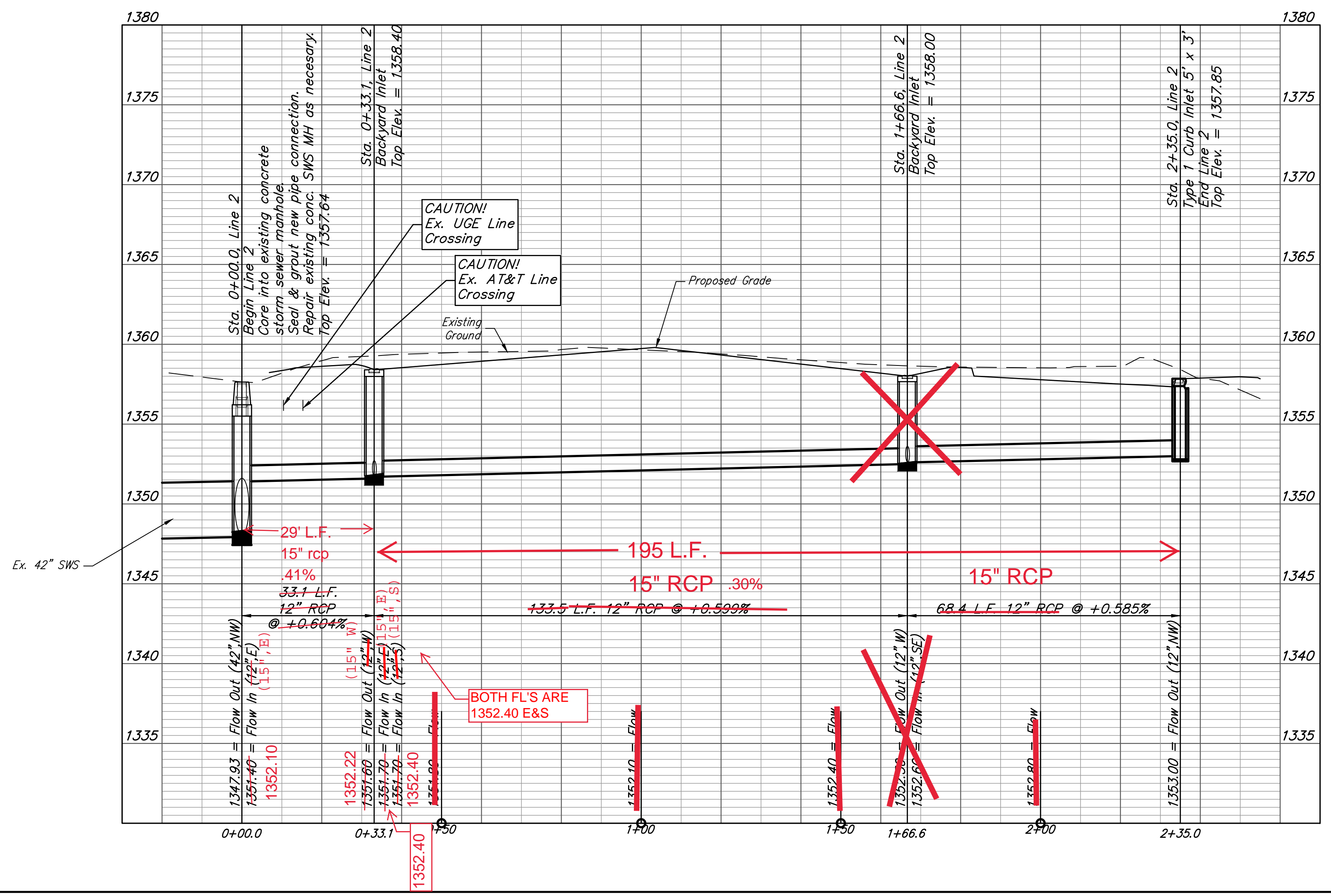
**AS BUILTS**



117 E. Lewis,  
 Wichita, KS 67202 (316)264-0242



## LINE 2




**BAUGHMAN COMPANY**  
 315 Ellis St.  
 Wichita, KS 67211  
 316-262-7271  
 BaughmanCo.com

Hampton Square Second  
**SWS Line 2**

Stormwater Sewer Improv.

PROJECT NUMBER:  
 21-07-E962

DESIGN: ENG DRAWN: JA

DATE: Sep. 1, 2021

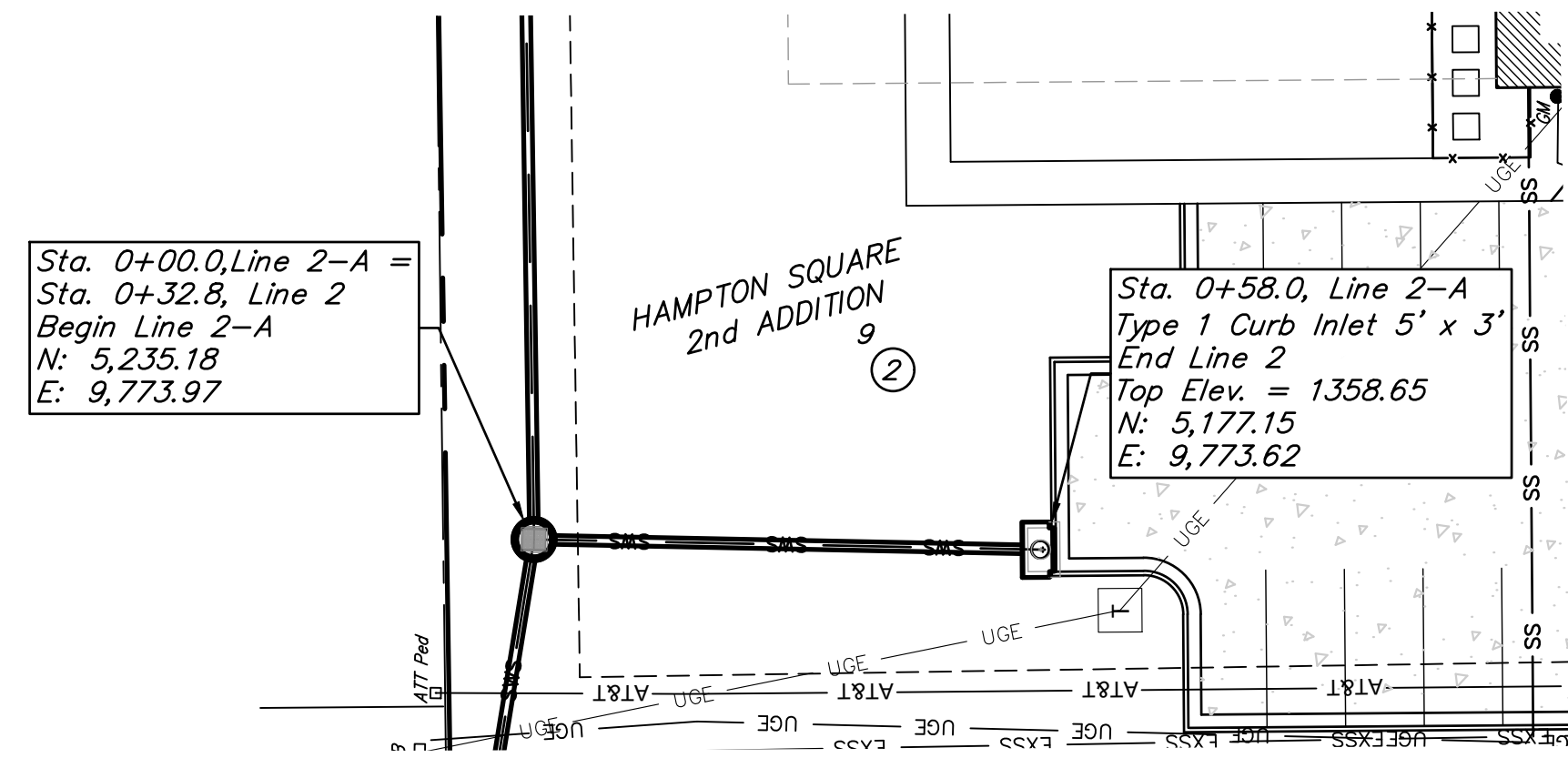
SHEET **3** OF **9**

File: E:\Projects\Detmer - Dental (21-07-E962)\Engineering\Phase 1\PPD\Detmer - Dental PPD PLAN.dwg

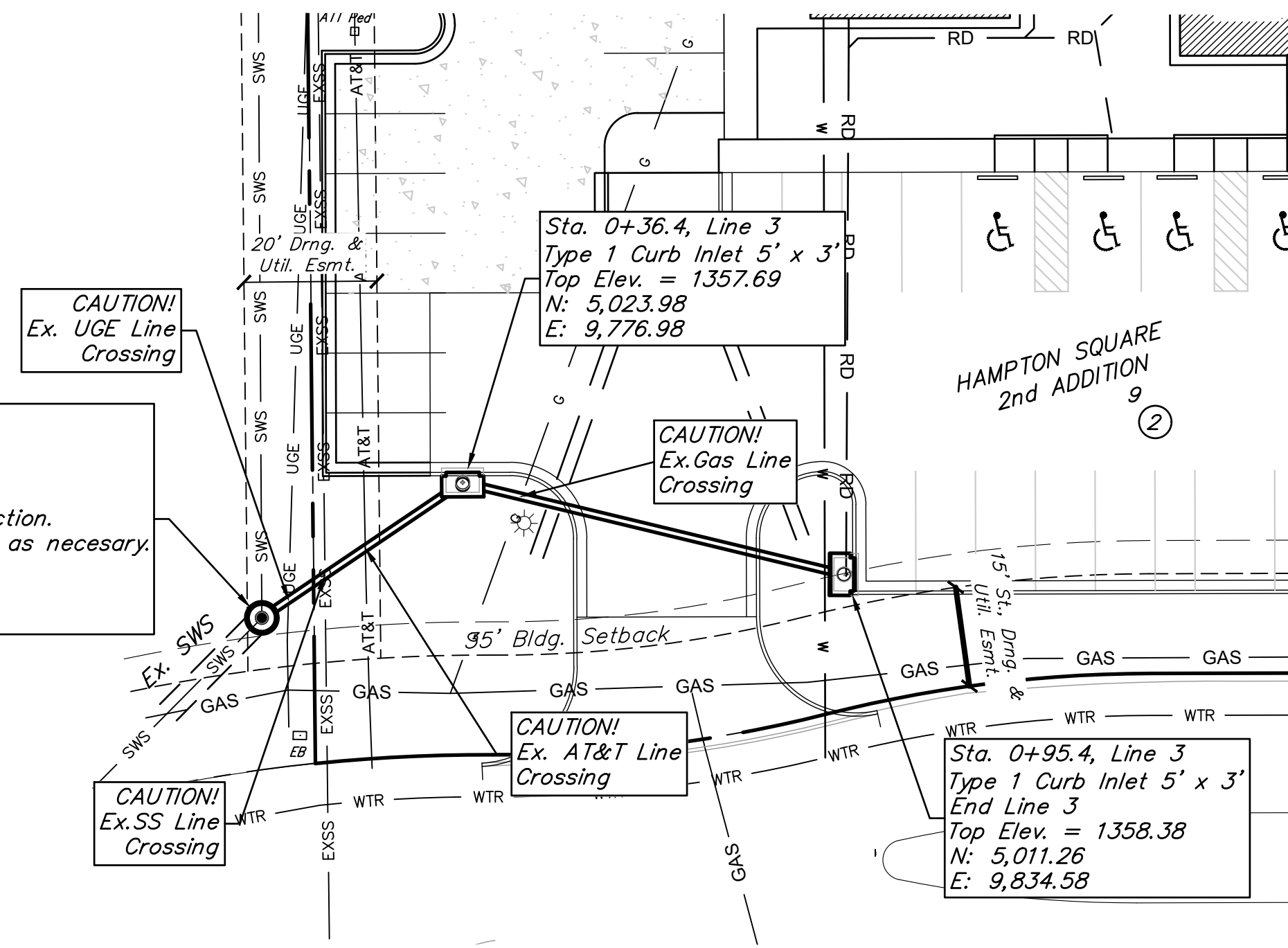
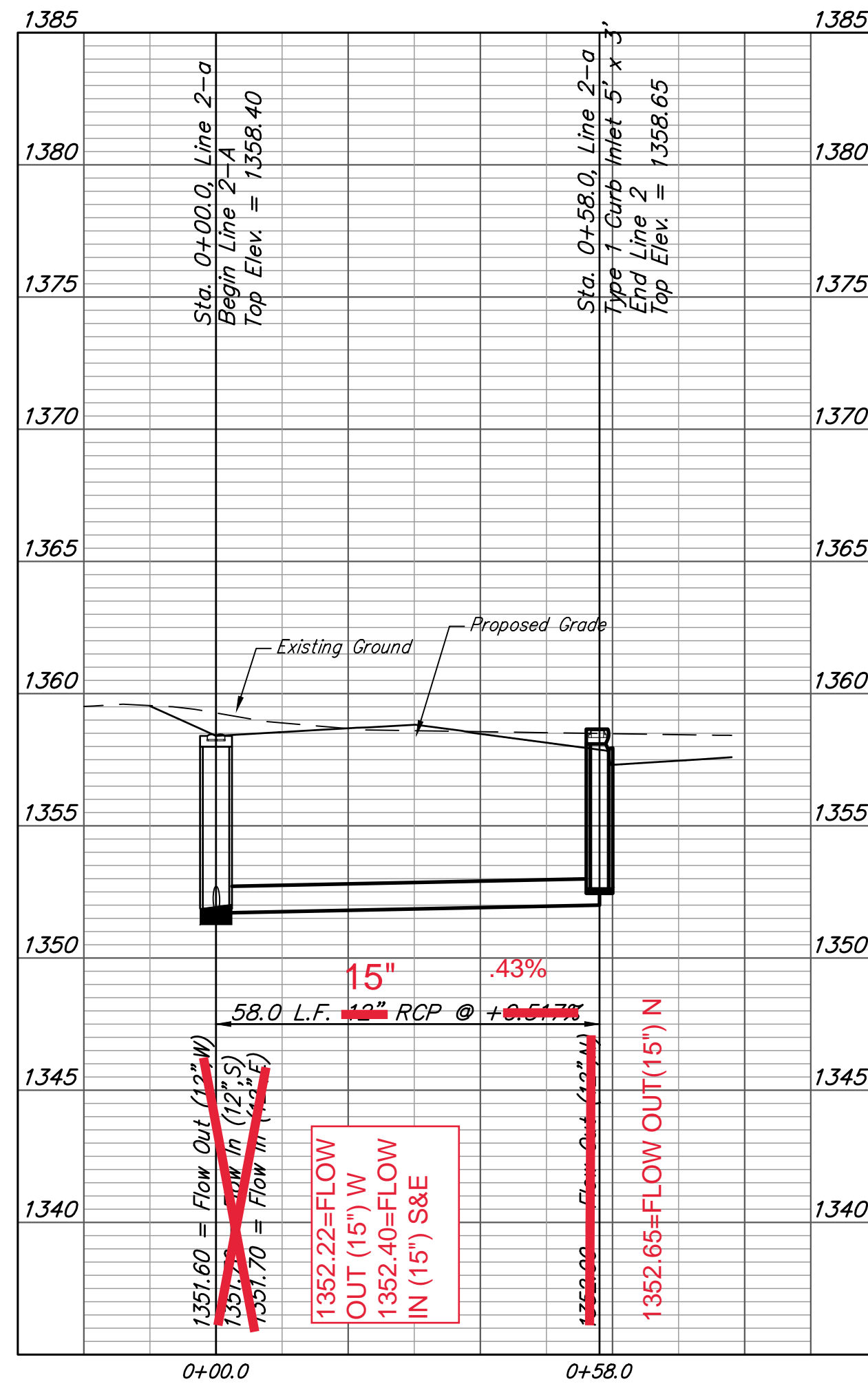
# BENCHMARKS

Site Benchmark - 1  
 "X" chiseled on NW corner of curb inlet on Havenhurst St., West of SW property corner.  
 Elevation = 1357.24 (NAVD 88)

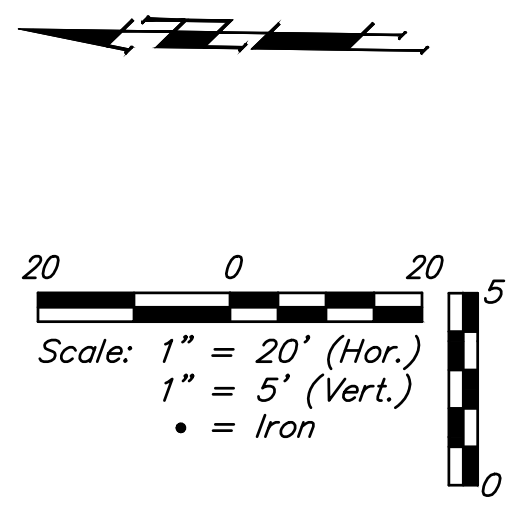
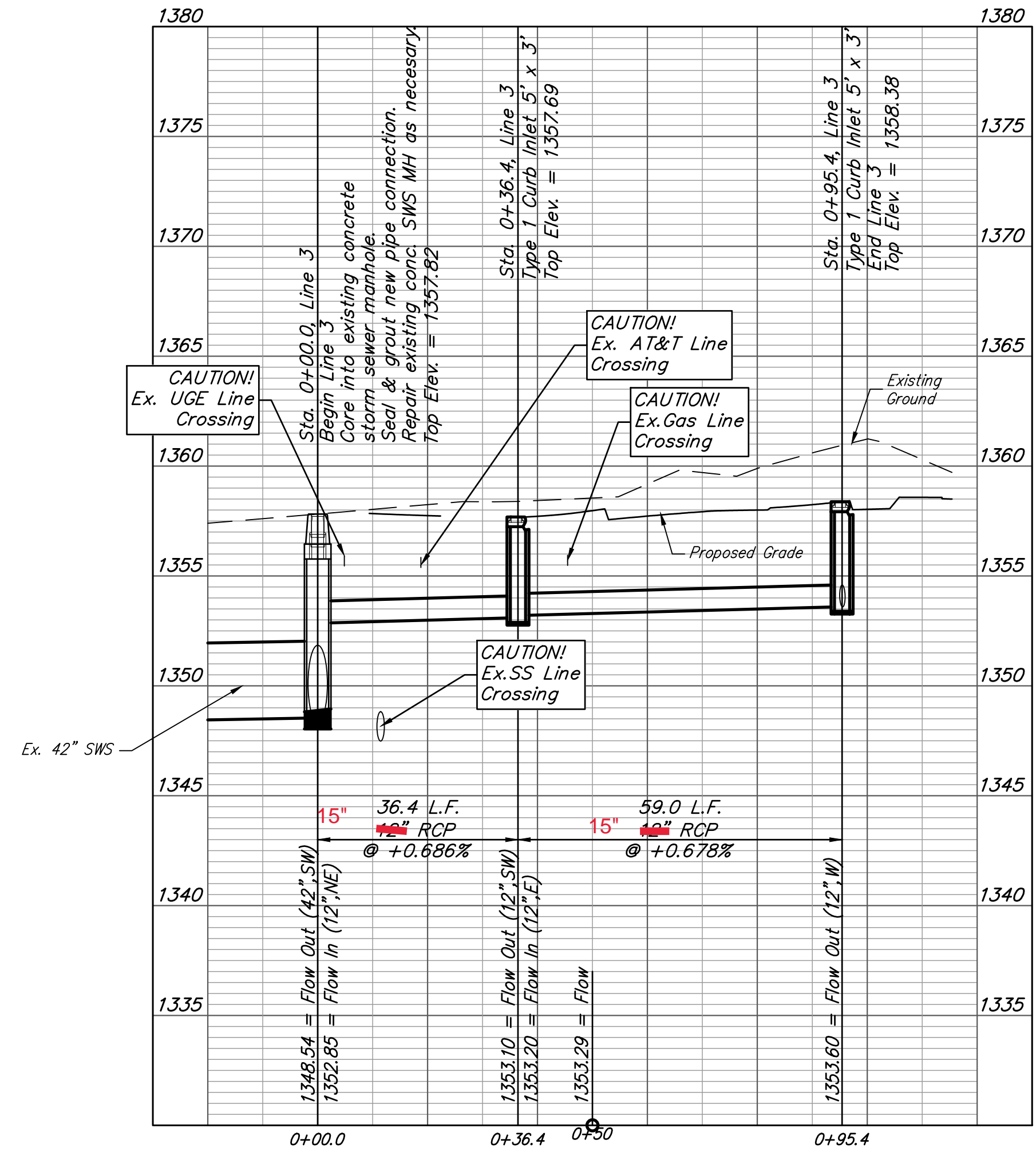
Site Benchmark - 2  
 "X" chiseled on top of curb, North side of Havenhurst St., West of SE property corner.  
 Elevation = 1357.53 (NAVD 88)



LINE 2-A



LINE 3



**BAUGHMAN COMPANY**

315 Ellis St.  
 Wichita, KS 67211  
 316-262-7271  
 BaughmanCo.com

Hampton Square Second

**SWS Line 2A & SWS Line 3**

Stormwater Sewer Improv.

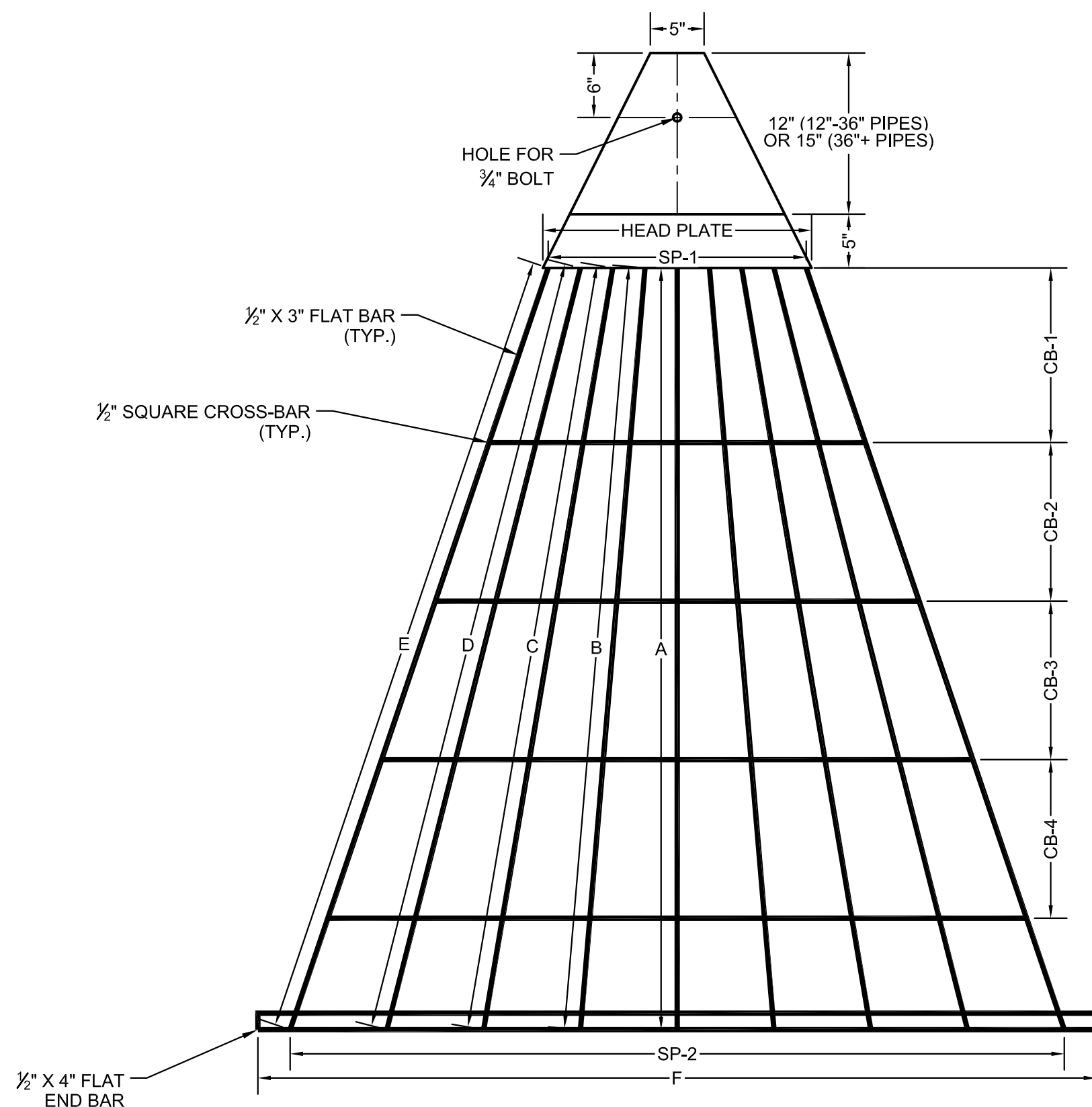
PROJECT NUMBER:  
21-07-E962

DESIGN: ENG DRAWN: JA

DATE: Sep. 1, 2021

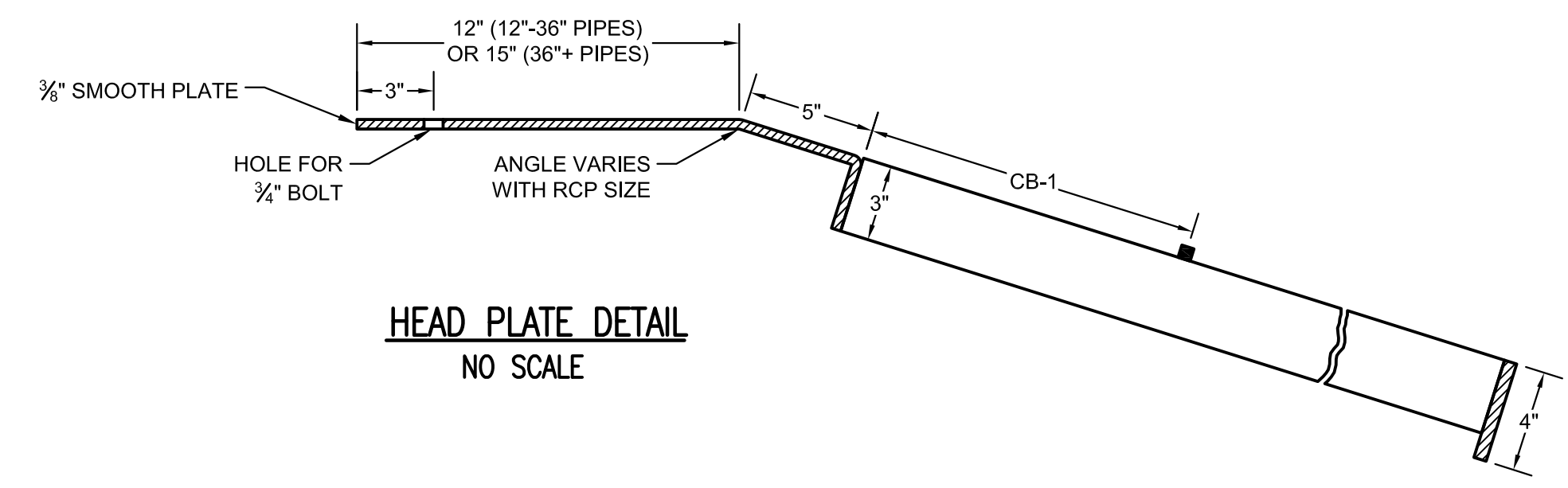
SHEET **4** OF **9**

File: E:\Projects\Detmer - Dental (21-07-E962)\Engineering\Phase 1\PPD\Detmer - Dental PPD PLAN.dwg

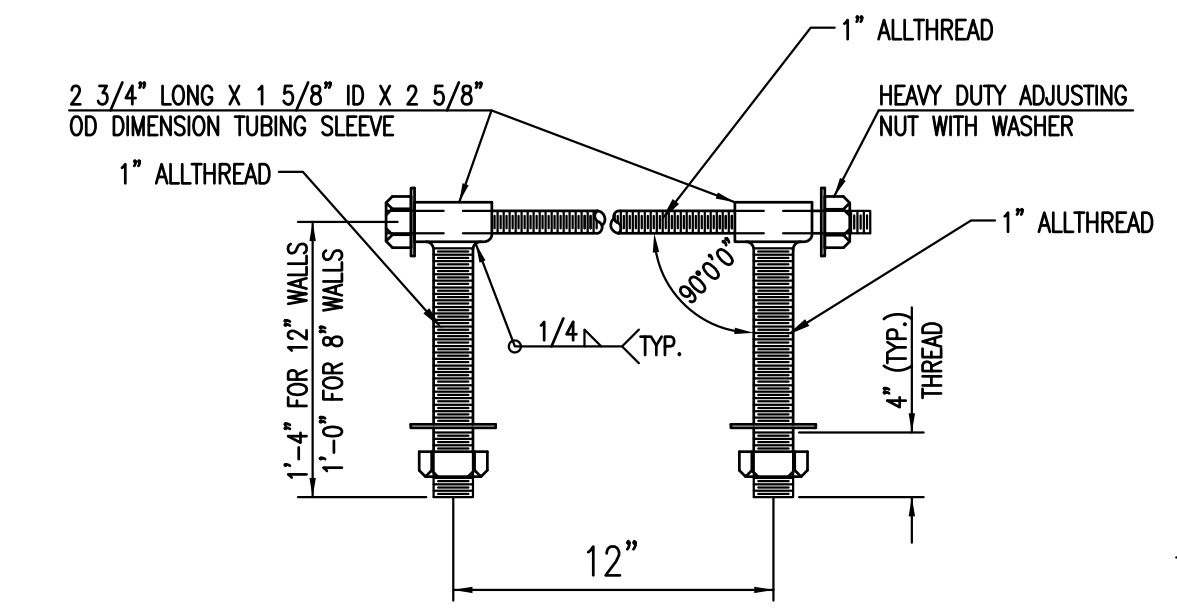


**END GRATE DETAIL**  
NO SCALE  
NOTE: GRATE TO BE USED AS DIRECTED BY THE CITY OF WICHITA.

GRATE DIMENSIONS													
PIPE SIZE	HEAD PLATE	A	B	C	D	E	F	CB-1	CB-2	CB-3	CB-4	SP-1	SP-2
12"	13"	19 1/4"	19 3/8"	-	-	-	27"	10 3/8"	-	-	-	3@4"	3@6"
15"	13"	23 1/2"	25 1/4"	-	-	-	34"	10 3/4"	-	-	-	3@4"	3@8"
18"	13"	25"	26 1/8"	-	-	-	40"	12 7/8"	-	-	-	3@4"	3@9"
24"	17"	41 1/2"	42 1/2"	43 1/2"	-	-	53"	12"	15"	-	-	4@4"	4@9"
30"	19"	51 1/2"	52 1/2"	53 1/2"	-	-	65"	16 1/4"	11 3/4"	12"	-	2@3"+3@4"	5@9"
36"	21"	60 1/2"	61 1/2"	62 1/2"	-	-	78"	18 5/8"	14 1/4"	16"	-	2@2"+4@4"	6@9"
42"	22"	65 1/2"	66 1/2"	67 3/8"	68 3/4"	-	86"	13 3/8"	12 5/8"	13"	11 3/4"	7@3"	7@9"
48"	25"	70 7/8"	71"	71 3/4"	73"	74 1/2"	90"	16 1/4"	14 3/4"	14 3/4"	14 3/4"	8@3"	8@9"
54"	26"	71 3/4"	73"	74 1/2"	74 3/4"	76 3/4"	96"	6 7/8"	20 7/8"	17 7/8"	15 5/8"	4@2 3/4"+5@3"	9@9"
60"	28"	61 1/8"	61 3/4"	62 3/4"	64 1/2"	66 5/8"	102"	12"	12"	11 1/2"	13"	2@2"+8@3"	10@9"

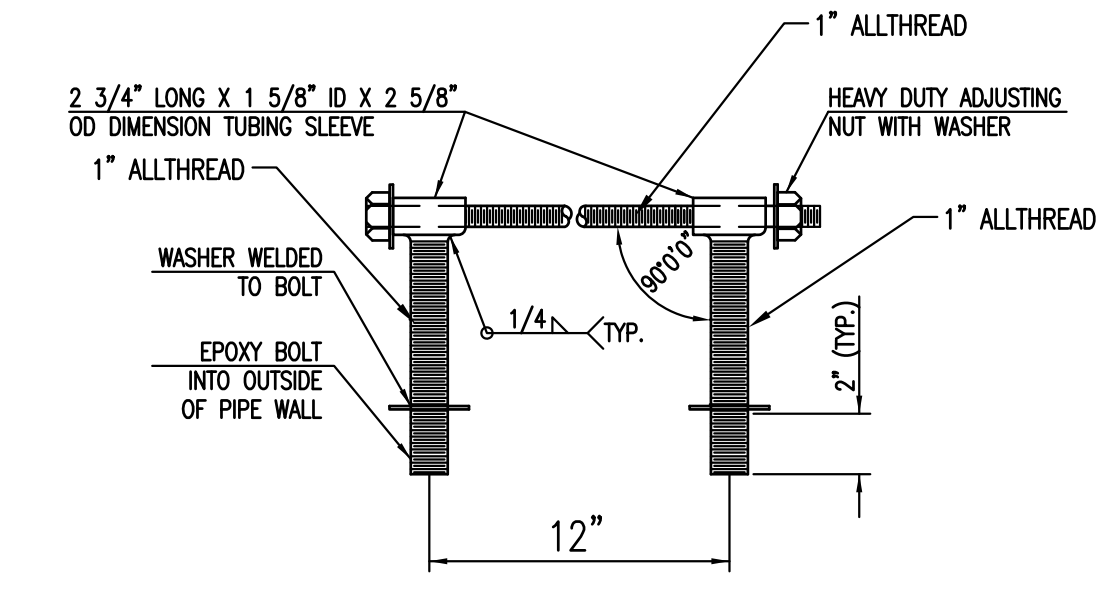


**HEAD PLATE DETAIL**  
NO SCALE



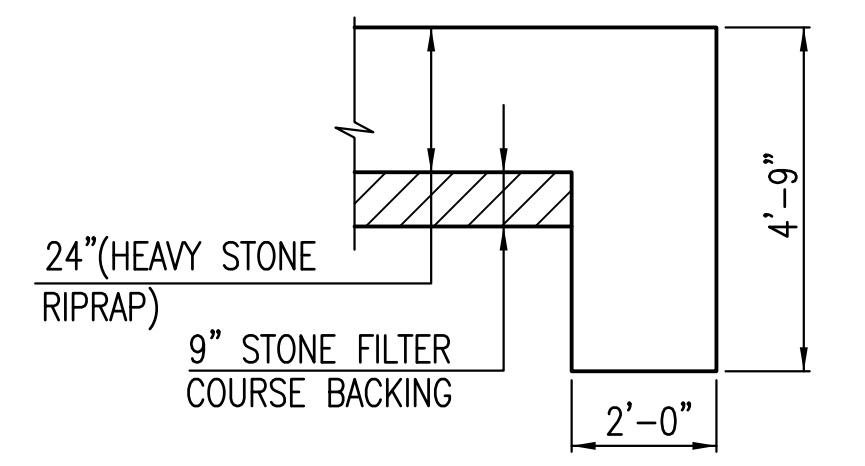
**HEAVY DUTY (H.D.) COUPLER (>=36")**  
NO SCALE

- NOTES
1. BOLTS TO BE A-36 1 1/2" DIAMETER.
  2. BOLTS, NUTS, WASHERS AND SLEEVES TO BE ZINC PLATED.
  3. WASHERS TO BE 3 1/2" O.D. X 7 GAUGE.
  4. SHIP WITH NUTS AND WASHERS PLACED ON BOLTS.



**HEAVY DUTY (H.D.) COUPLER (<=30")**  
NO SCALE

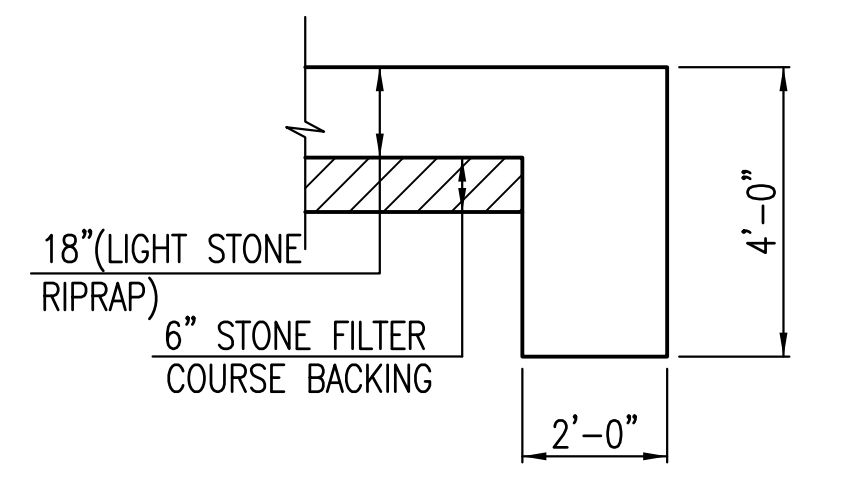
- NOTES
1. BOLTS TO BE A-36 1 1/2" DIAMETER.
  2. BOLTS, NUTS, WASHERS AND SLEEVES TO BE ZINC PLATED.
  3. WASHERS TO BE 3 1/2" O.D. X 7 GAUGE.
  4. SHIP WITH NUTS AND WASHERS PLACED ON BOLTS.



**TYPICAL SECTION THRU TOEWALL**  
NO SCALE

- NOTES
1. ALL RIPRAP FOR THIS PROJECT SHALL BE NATURAL STONE. NEITHER BROKEN CONCRETE, FABRIC ENVELOPE, NOR PREMIXED DRY PACKAGED CONCRETE BAG ALTERNATES WILL BE ALLOWED, UNLESS INDICATED OTHERWISE.
  2. TOEWALLS SHALL BE INSTALLED ALONG ALL UNPROTECTED EDGES OF STONE RIPRAP.
  3. GROUTING OF THE SURFACE OF THE RIPRAP SHALL NOT BE PERFORMED, UNLESS INDICATED OTHERWISE. GROUTING OF THE TOEWALLS SHALL BE PERFORMED PER CITY SPECIFICATIONS.

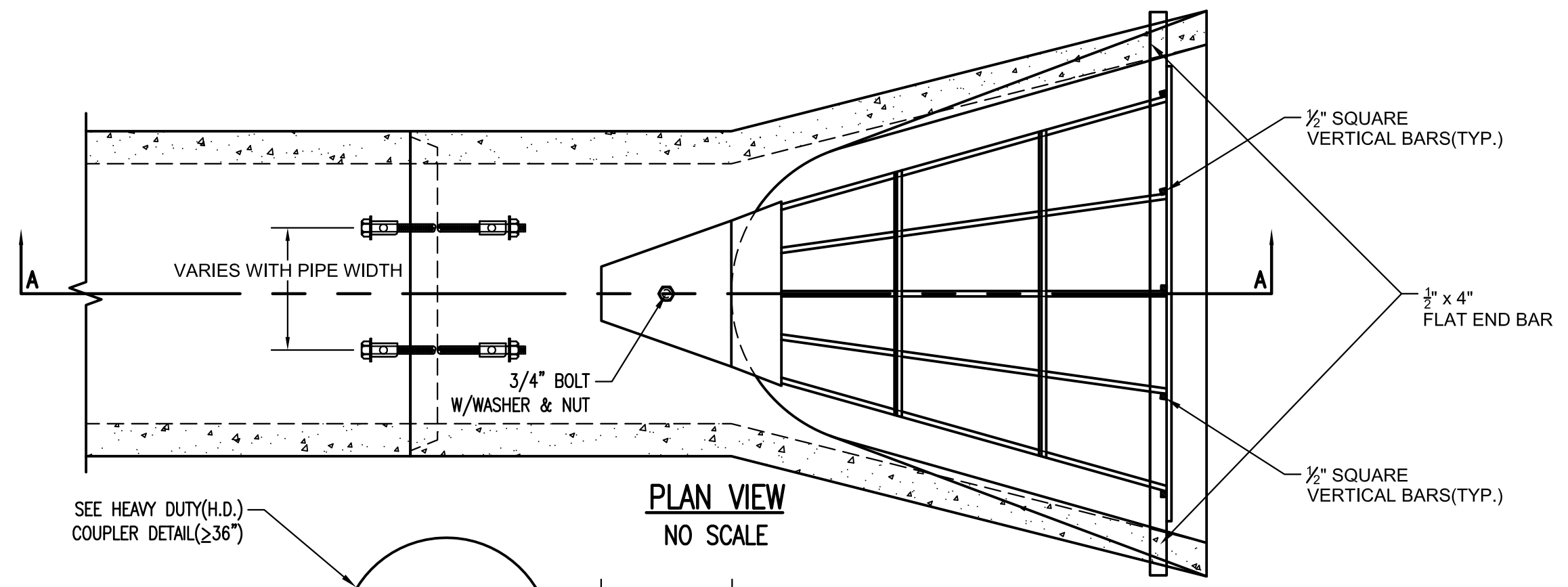
**HEAVY STONE RIPRAP DETAILS**



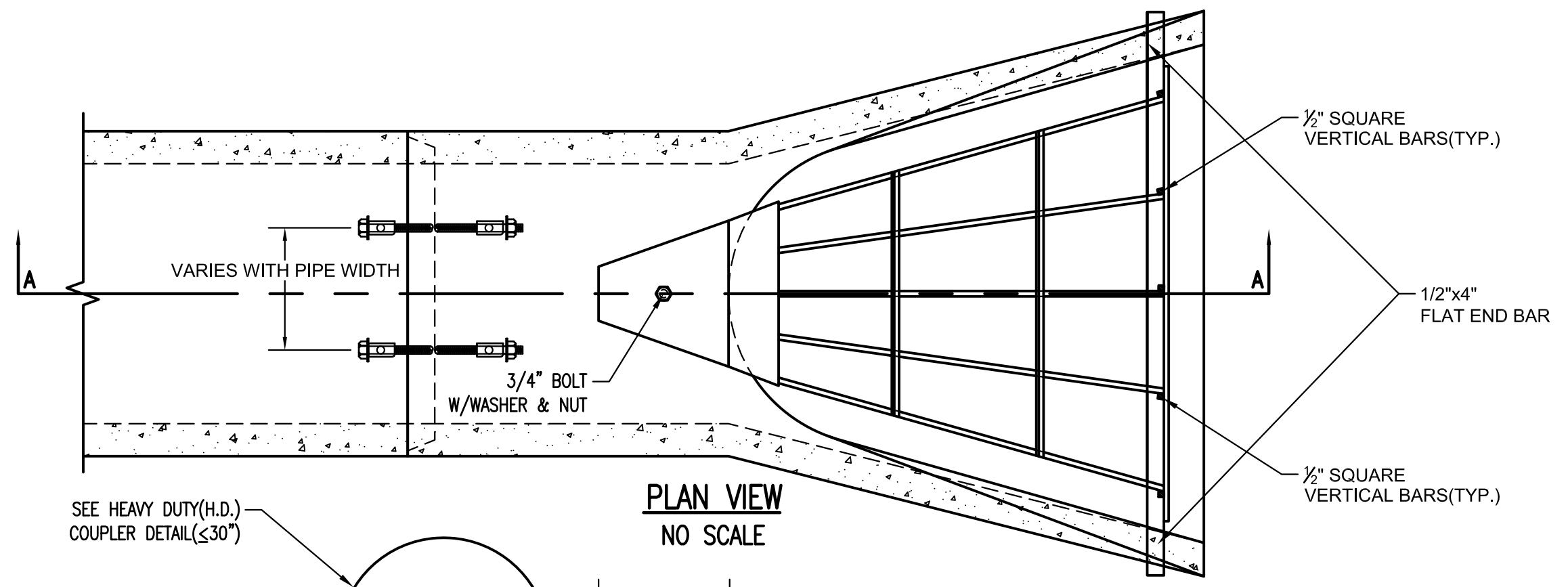
**TYPICAL SECTION THRU TOEWALL**  
NO SCALE

- NOTES
1. ALL RIPRAP FOR THIS PROJECT SHALL BE NATURAL STONE. NEITHER BROKEN CONCRETE, FABRIC ENVELOPE, NOR PREMIXED DRY PACKAGED CONCRETE BAG ALTERNATES WILL BE ALLOWED, UNLESS INDICATED OTHERWISE.
  2. TOEWALLS SHALL BE INSTALLED ALONG ALL UNPROTECTED EDGES OF STONE RIPRAP.
  3. GROUTING OF THE SURFACE OF THE RIPRAP SHALL NOT BE PERFORMED, UNLESS INDICATED OTHERWISE. GROUTING OF THE TOEWALLS SHALL BE PERFORMED PER CITY SPECIFICATIONS.

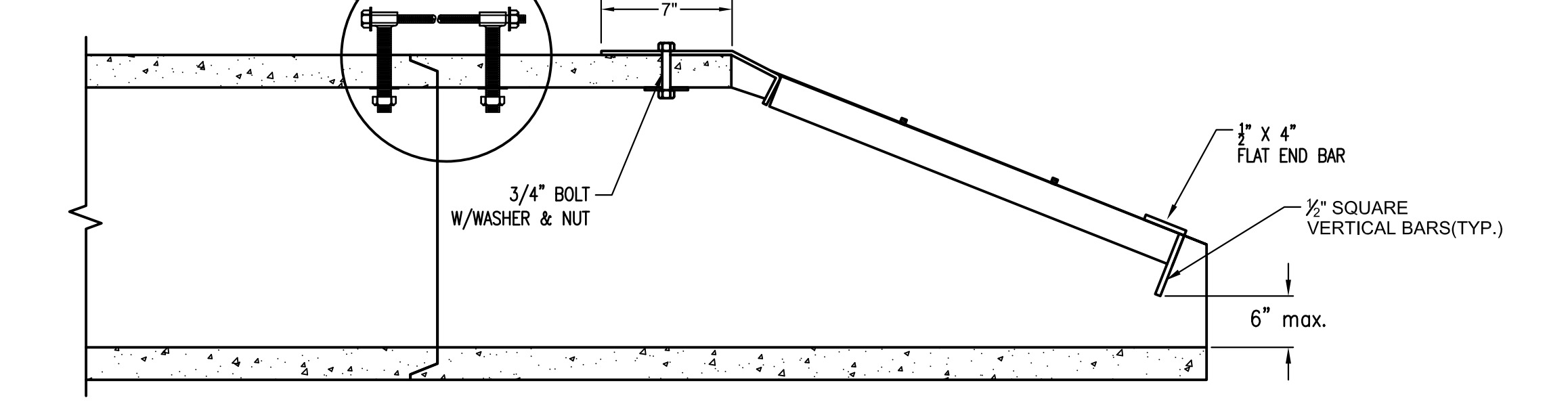
**LIGHT STONE RIPRAP DETAILS**



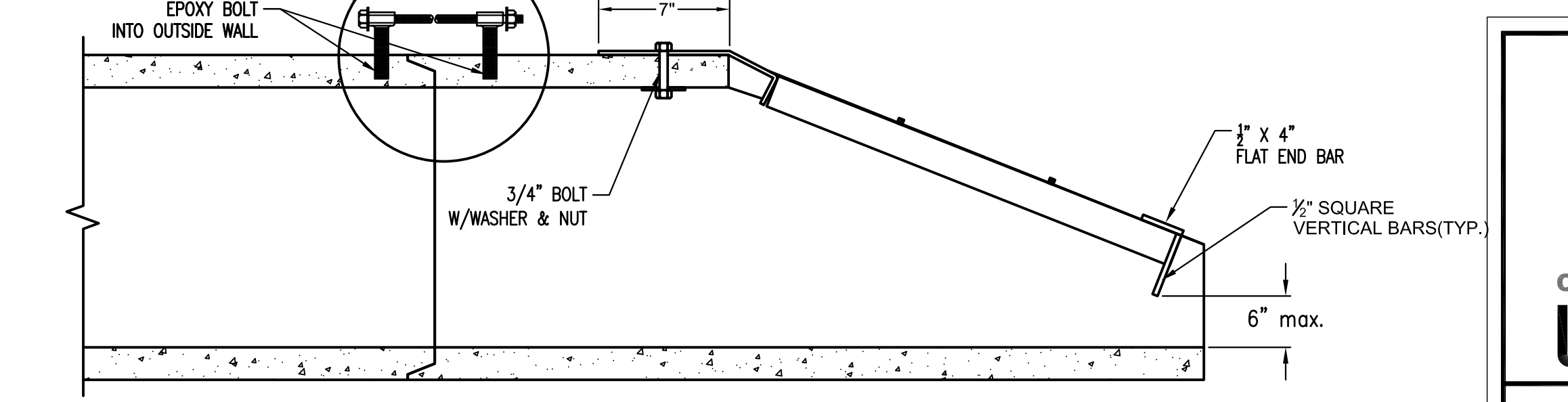
**PLAN VIEW**  
NO SCALE



**PLAN VIEW**  
NO SCALE



**SECTION A-A**



**SECTION A-A**

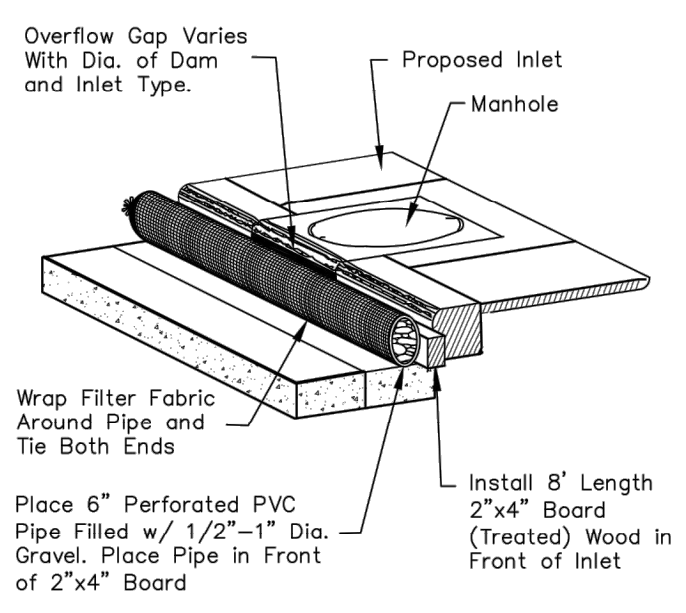


<b>END SECTION, PIPE RESTRAINT COUPLER &amp; END GRATE</b>		
CITY ENGINEER <b>GARY JANZEN, P.E.</b>		
PROJECT NUMBER	OCA NUMBER	DATE
		01/2015
CITY ENGINEER'S OFFICE CITY HALL - SEVENTH FLOOR 455 NORTH MAIN STREET WICHITA, KANSAS 67202-1620 (316) 268-4501		DESIGN DRAWN
		SHEET <b>5 of 9</b>

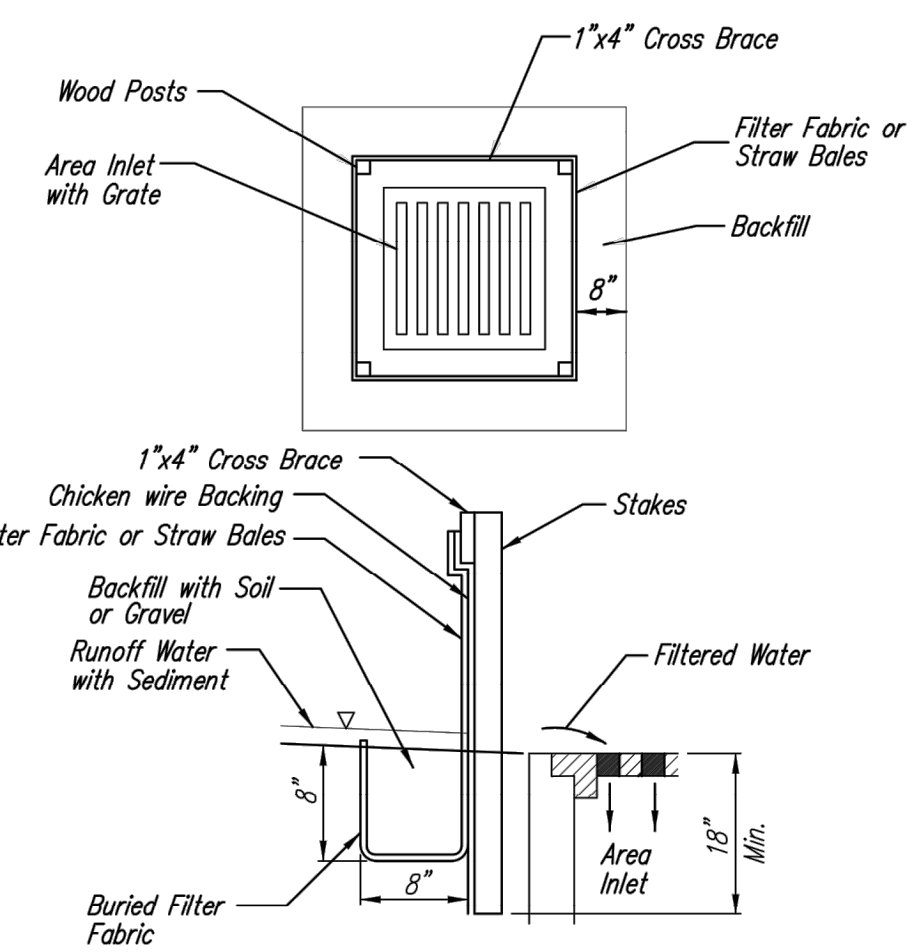




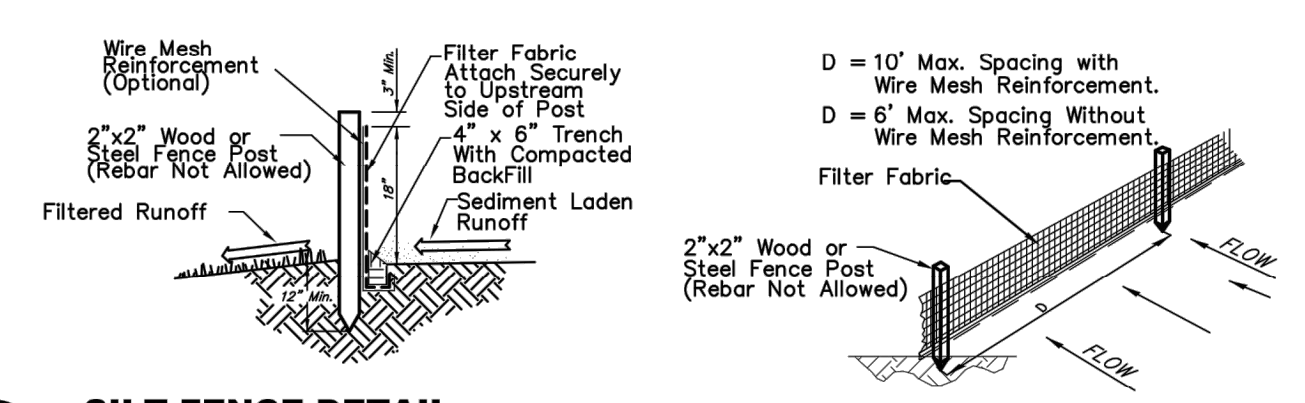
**FOR REFERENCE ONLY  
NOT TO SCALE**



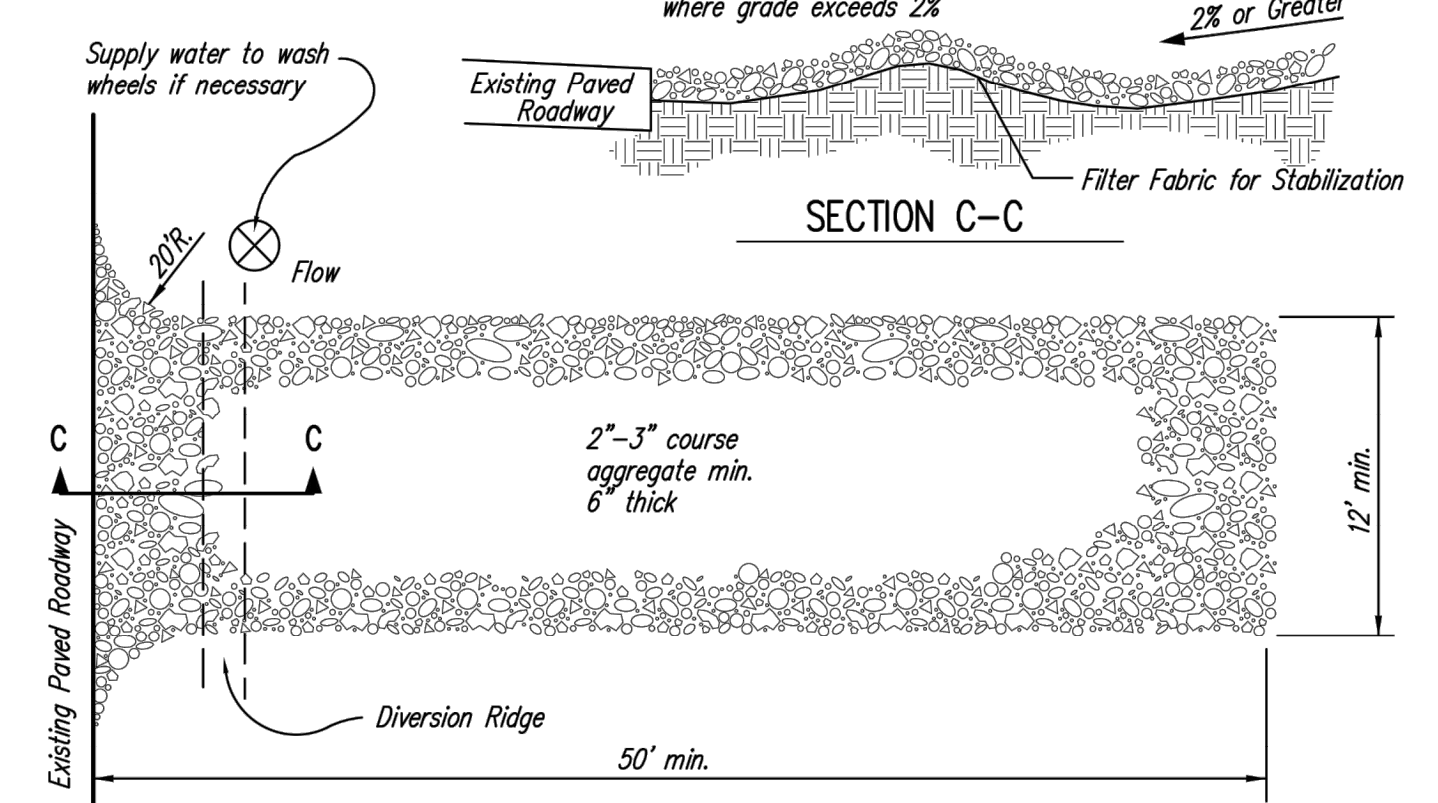
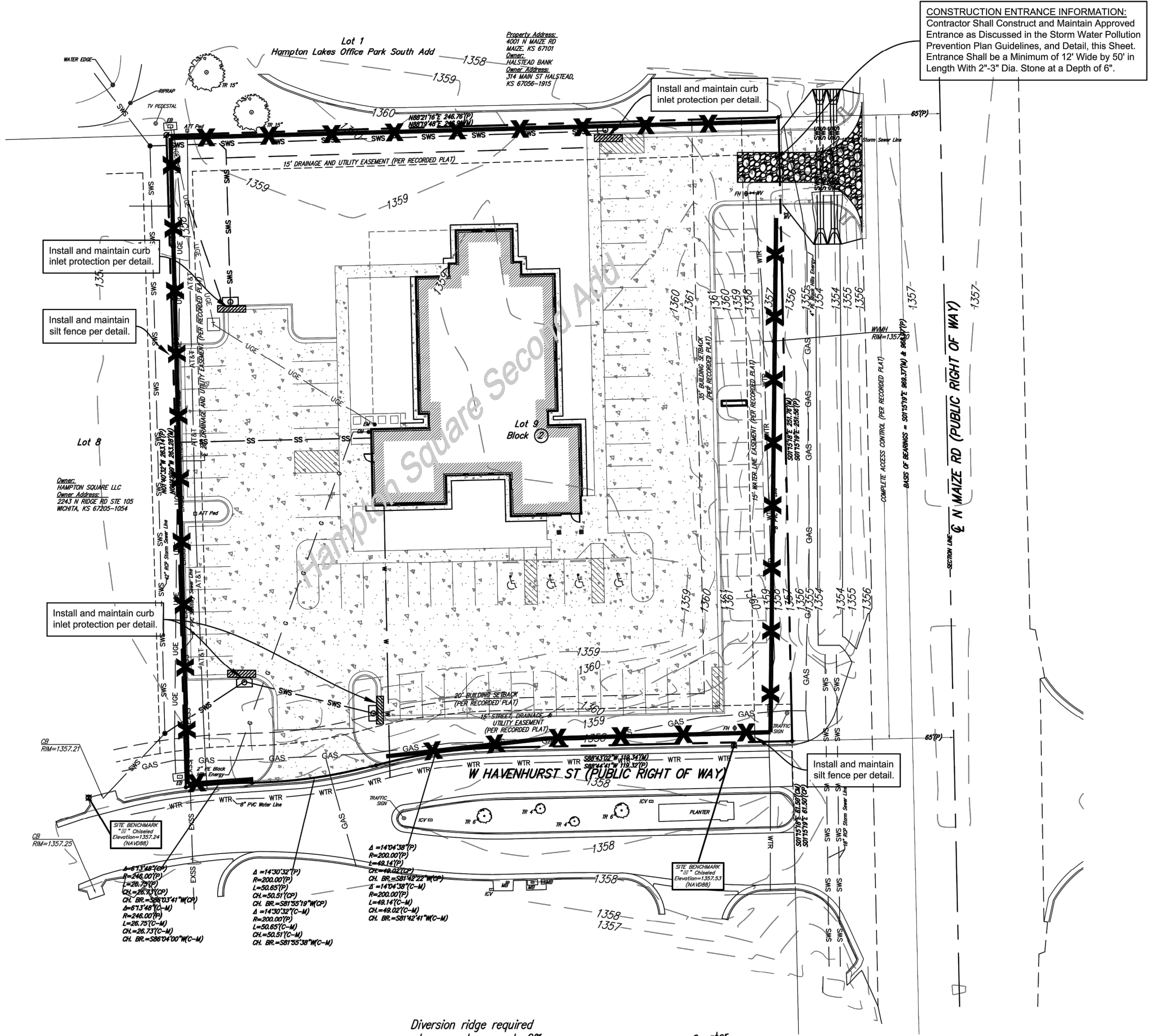
**1 TYPE 1 INLET PROTECTION**  
NOT TO SCALE



**2 INLET PROTECTION FOR AREA INLETS**  
(INLET PROTECTION: SILT FENCE OR STRAW BALES)



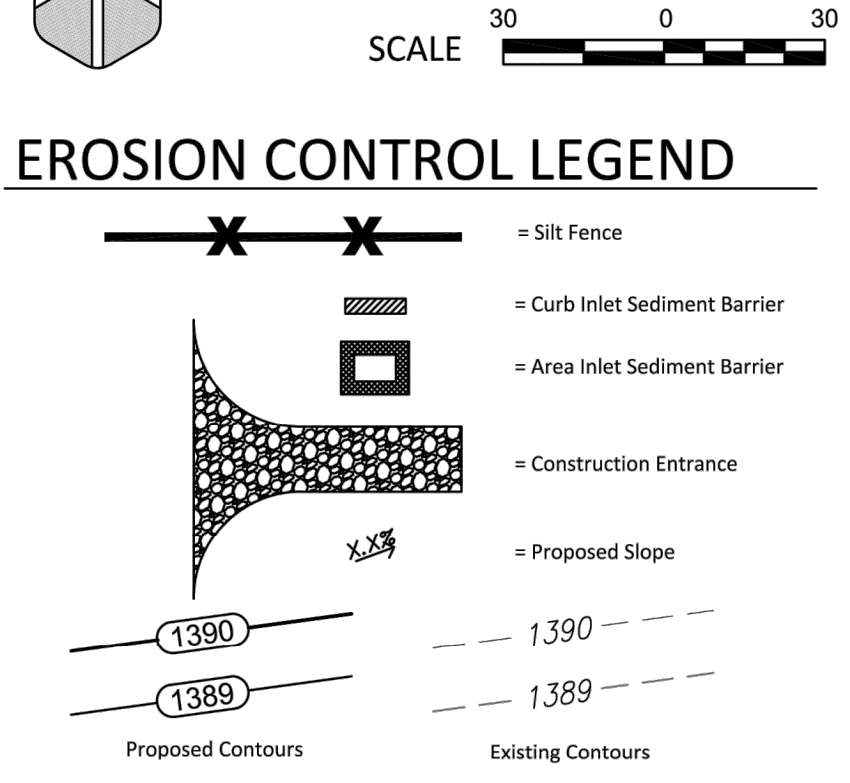
**3 SILT FENCE DETAIL**  
NOT TO SCALE



- NOTES:
1. THE ENTRANCE SHALL BE MAINTAINED IN A CONDITION THAT WILL PREVENT TRACKING OR FLOWING OF SEDIMENT ONTO PUBLIC RIGHTS-OF-WAY. THIS MAY REQUIRE TOP DRESSING, REPAIR AND/OR CLEANOUT OF ANY MEASURES USED TO TRAP SEDIMENT.
  2. WHEN NECESSARY, WHEELS SHALL BE CLEANED PRIOR TO ENTRANCE ONTO PUBLIC RIGHT-OF-WAY.
  3. WHEN WASHING IS REQUIRED, IT SHALL BE DONE ON AN AREA STABILIZED WITH CRUSHED STONE THAT DRAINS INTO AN APPROVED SEDIMENT TRAP OR SEDIMENT BASIN, AS SHOWN ABOVE.
  4. DRIVE ENTRANCES ONTO RESIDENTIAL LOTS WILL NOT BE REQUIRED TO HAVE THE SEDIMENT BARRIER SHOWN, BUT WHEEL WASHING MAY BE REQUIRED IF STABILIZED ENTRANCE IS NOT SUFFICIENT TO KEEP MUD FROM BEING TRACKED ONTO ADJACENT STREET. ENTRANCE SHALL EXTEND FROM BACK OF CURB TO DWELLING.

**4 STABILIZED CONSTRUCTION ENTRANCE**  
NOT TO SCALE

**EROSION CONTROL PLAN**



**LEGAL DESCRIPTION**

Lot 9, Block 2, Hampton Square Second Addition, an Addition to Wichita, Sedgewick County, Kansas.

**SITE INFORMATION**

Total Area:	±62,571 sq. ft. (1.44 acres)
Disturbed Area:	±62,571 sq. ft. (1.44 acres)
Impervious Area, pre-const:	±0 sq. ft. (0.00 acres)
Impervious Area, post-const:	±37,741 sq. ft. (0.86 acres)

**BENCHMARKS**

Site Benchmark - 1  
"X" chiseled on NW corner of curb inlet on Havenhurst St., west of SW property corner.  
Elevation = 1357.24 (NAVD 88)

Site Benchmark - 2  
"X" chiseled on top of curb, north side of Havenhurst St., west of SE property corner.  
Elevation = 1357.53 (NAVD 88)

**KANSAS ONE CALL**

Contractor shall be required to provide notice to Kansas One Call at 287-2470 a minimum of three (3) working days prior to any excavation or work adjacent to utilities.  
Kansas One Call 1-800-DIG-SAFE

**UTILITY CONTACTS**

The Contractor must notify the following in case of an emergency:

Kansas Gas Service (Gas)	1-888-482-4950
Black Hills Energy (Gas)	1-800-303-0357
Eergy (Electric)	383-8650
Cox Communications (Telecommunication)	262-4270
AT&T (Telecommunication)	268-2759
City of Wichita Water Dept. (Water)	268-4563 or 268-4908
City of Wichita Sewer Maint. (San. Sewer)	268-4024 or 262-6000
City of Wichita Storm Sewer Maint. (Storm Sewer)	268-4090
City of Wichita Traffic Maint. (Traf. Control)	268-4034 or 268-4203
Conoco Pipeline Co. (Petroleum)	1-800-231-2551
Williams Pipeline Co. (Petroleum)	529-6600 or 1-800-324-9696
Phillips Pipeline Co. (Petroleum)	1-800-766-8230

**EROSION CONTROL NOTES**

1. No land clearing or grading shall begin until all applicable erosion control measures have been installed. This project is subject to this SWPP Plan, if applicable. The Contractor shall comply with any unusual requirements as necessary for the site to be in compliance during construction, per this plan and per City and State specifications (See #11).
2. All exposed areas shall be seeded as specified within 14 days of final grading. Seed is to include straw mulch, crimped in place per industry standards.
3. Should construction stop for longer than 14 days, the site shall be seeded as specified.
4. Maintain erosion control measures after each rain and at least once a week.
5. This plan shall not be considered all inclusive as the contractor shall take all necessary precautions to prevent soil sediment from leaving the site.
6. Contractor shall comply with all state and local ordinances that apply.
7. Additional erosion and sediment control measures will be installed if deemed necessary by on site inspection.
8. Land disturbing activities shall not commence until approval to do so has been received by governing authorities.
9. If installation of storm drainage system should be interrupted by weather or nightfall, the pipe ends shall be covered with filter fabric.
10. See Landscape Plan for ground treatments in all disturbed areas beyond impervious surfaces.
11. This Erosion Control Plan should be in job trailer and/or on site at all times. The Contractor is responsible for any needed changes, updates or maintenance to BMP's on site. This plan may change and updates need to be recorded and documented on the plan. This plan is a flexible plan, due to changing site conditions and weather. Please inform Landscape Architect and/or Engineer of changes to plan.
12. ANY substitutions for the sediment control devices shown, must be approved by the Landscape Architect and/or Engineer prior to any uses on site.
13. If site disturbance is over 1 acre, an NPDES Permit Application has been submitted for this property and a copy of this application must be kept at the job site for the duration of the construction process.

**BAUGHMAN COMPANY**  
315 Ellis St. Wichita, KS 67211 316-262-7271  
BaughmanCo.com

**C3.0**  
**EROSION CONTROL PLAN**

**H SHELLEN ARCHITECTURE**  
SHELDENARCH.COM  
800 E. First Suite 140 Wichita, KS 67202 316.263.4300

**PRELIMINARY PLAN. NOT FOR CONSTRUCTION.**  
This document is preliminary in nature and is not a final, signed and sealed document.

**Detmer Family Dentistry**  
HAMPTON SQUARE SECOND ADDITION  
LOT 9, BLOCK 2, WICHITA, KS 67101

**BAUGHMAN COMPANY**  
315 Ellis St.  
Wichita, KS 67211  
316-262-7271  
BaughmanCo.com

Hampton Square Second  
**Erosion Control Plan**  
Stormwater Sewer Improv.

PROJECT NUMBER:  
21-07-E962  
DESIGN: ENG DRAWN: JA  
DATE: Aug. 26, 2021  
SHEET **8** OF **9**

# FINAL PLAT HAMPTON SQUARE SECOND ADDITION AN ADDITION TO WICHITA, SEDGWICK COUNTY, KANSAS

## CERTIFICATE OF SURVEY

I, Gregory J. Allison, a registered land surveyor in Kansas, do hereby certify that I have been in responsible charge of surveying and plotting of "HAMPTON SQUARE SECOND ADDITION", an addition to Wichita, Sedgwick County, Kansas, into Lots, Blocks, Reserves, and Streets, the same being accurately set forth in the accompanying plat and described herein.

A replat of Lots 1, 2, 3, 4, 5, 7, 8, and 9, Block 1, Hampton Square Addition, Wichita, Sedgwick County, Kansas. All easements, rights-of-way, building setbacks, and access controls, together with all other public dedications within the above described property, are hereby vacated and replatted by virtue of K.S.A. 12-512(b).

I hereby certify that the details of this plat are correct to the best of my knowledge and belief this 25<sup>th</sup> day of May, 2011.

*Gregory J. Allison*  
Gregory J. Allison, PE, LS #1257  
MKEC Engineering Consultants, Inc.  
411 North Webb Road  
Wichita, Kansas 67206

## OWNER'S CERTIFICATE

Know all men by these presents that the undersigned property owner of the land above set forth in the Registered Land Surveyor's Certificate, has caused the same to be surveyed and plotted into Lots, Blocks, Reserves, and Streets the same to be known as "HAMPTON SQUARE SECOND ADDITION", an addition to Wichita, Sedgwick County, Kansas.

Easements for the construction and maintenance of public sidewalks, utilities and drainage, as indicated on the accompanying plat are hereby granted to the public.

The streets are hereby dedicated to and for the use of the public.

All abutters rights of access to or from Maize Road over and across the east line of "HAMPTON SQUARE SECOND ADDITION" are hereby granted to the appropriate governing body, as indicated herein. All abutters rights of access to or from 37th Street over and across the south line of "HAMPTON SQUARE SECOND ADDITION", are hereby granted to the appropriate governing body, as indicated herein.

Reserves "A", "B", "C", "D", and "E" are plotted for landscaping, irrigation, berming, monuments, signs, water features, and utilities confined by easement(s) or rights-of-way. Reserves "D" and "E" are also plotted for the drainage. The Reserves shall be owned and maintained by the owner(s)/developer, and/or their successors, assigns, and/or a Lot Owner's Association.

A drainage plan has been developed for this plat. All drainage easements, rights-of-way, or reserves shall remain at established grades or as modified with the approval of the applicable City or County Engineer, and unobstructed to allow for the conveyance of stormwater. Lots 3 and 5, Block 1, Lots 1, 2, 3, 4, 5, 6, 7, 8, and 9, Block 2, are required to adhere to the minimum pad elevations as depicted herein on the "Minimum Pad Elevations" table.

This plat shall conform to the records of Community Unit Plan DP-262.

Hampton Square, LLC, a Kansas limited liability company

*Marvin L. Schellenberg*  
Marvin L. Schellenberg, Manager  
Hampton Square LLC, a Kansas limited liability company

STATE OF KANSAS, SEDGWICK COUNTY) ss:

This instrument was acknowledged before me on the 25<sup>th</sup> day of May, 2011, by Marvin L. Schellenberg, manager of Hampton Square LLC, a Kansas limited liability company.

IN WITNESS WHEREOF, I have hereunto set my hand and affixed my official seal, the day and year last above written.

*Cynthia A. Womack*  
Cynthia A. Womack  
Notary Public  
My Term Expires: 2/17/2013

*Cynthia A. Womack*  
Cynthia A. Womack  
Notary Public  
My Term Expires: 2/17/2013

## MORTGAGE CERTIFICATE

LEGACY Bank, holder of a mortgage on a portion of the above described property, does hereby consent to the plat of "HAMPTON SQUARE SECOND ADDITION."

Legacy Bank

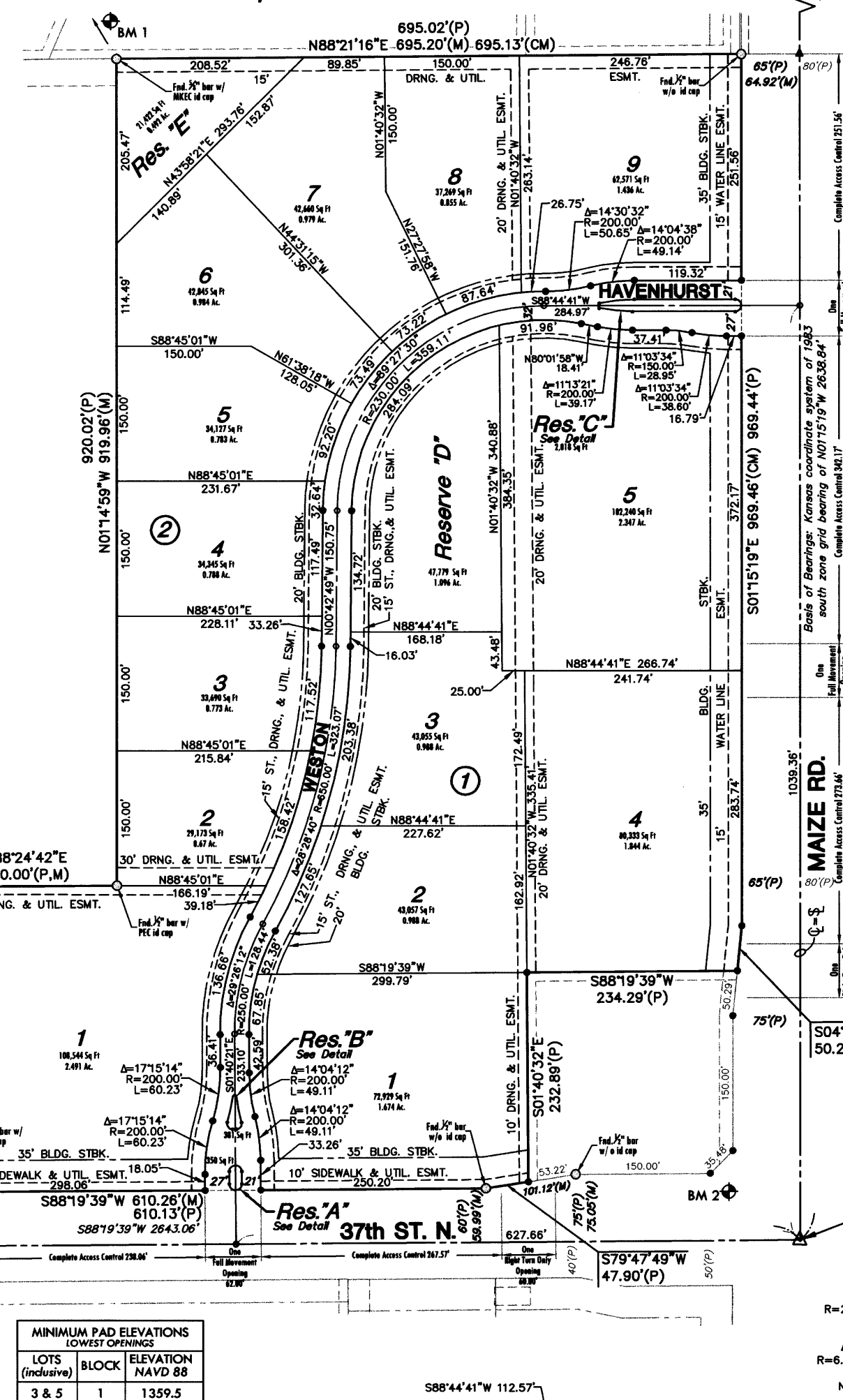
*Brad S. Yaeger*  
Brad S. Yaeger, Executive Vice President  
Brad Yaeger, Executive Vice President  
Legacy Bank

This instrument was acknowledged before me on this 25<sup>th</sup> day of May, 2011, by Brad Yaeger, Executive Vice President, Legacy Bank.

IN WITNESS WHEREOF, I have hereunto set my hand and affixed my official seal, the day and year last above written.

*Cynthia A. Womack*  
Cynthia A. Womack  
Notary Public  
My Term Expires: 2/17/2013

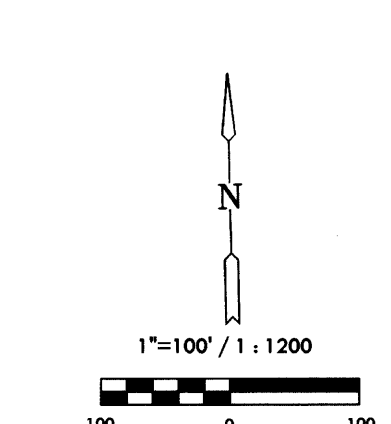
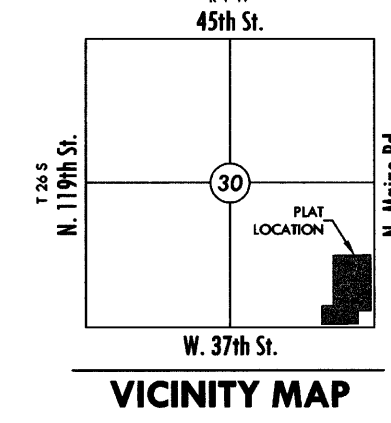
*Cynthia A. Womack*  
Cynthia A. Womack  
Notary Public  
My Term Expires: 2/17/2013



LOTS	BLOCK	ELEVATION NAVD 88
3 & 5	1	1359.5
1 - 9	2	1359.5

### BENCH MARKS

- BM 21-0 Chiseled square on concrete base of brick fence post on south side of 37th St. 1573 feet west of Maize Rd. Elev. = 1356.01 NAVD 88
- BM 1 Chiseled square on top of curb at south end of entrance island at Hampton Lakes St. and Manchester St. Elev. = 1357.69 NAVD 88
- BM 2 Chiseled square at northwest corner of pad of traffic signal mobile at northwest corner of Maize Rd. and 37th St. Elev. = 1354.49 NAVD 88



Date of Survey: April 8th, 2011

Basis of Bearings: Kansas coordinate system of 1983 south zone grid bearing of N01°15'19"W along the E. line of the SE 1/4, Sec. 30, T26S, R1W, 6th P.M.

This plat is surveyed and plotted on NAD83 using Kansas state plane south zone coordinates, modified to the surface, having a combined adjustment scale factor of 1.000120014401728

## PLANNING COMMISSION CERTIFICATE

This plat of "HAMPTON SQUARE SECOND ADDITION" has been submitted to and approved by the Wichita-Sedgwick County Metropolitan Area Planning Commission, Wichita, Kansas.

Dated this 24<sup>th</sup> day of May, 2011  
WICHITA-SEDGWICK COUNTY METROPOLITAN AREA PLANNING COMMISSION

*Debra Miller Stevens*  
Debra Miller Stevens, Chair

*John L. Sobien*  
John L. Sobien, Secretary



## GOVERNING BODY CERTIFICATE

The dedications shown on this plat are hereby accepted and this plat is hereby approved by the governing body of the City of Wichita, Kansas.

Dated this 27<sup>th</sup> day of June, 2011

At the direction of the City Council.

*John L. Sobien*  
John L. Sobien, Mayor

*John L. Sobien*  
John L. Sobien, Deputy City Clerk

## TRANSFER RECORD

STATE OF KANSAS, SEDGWICK COUNTY) ss:  
Entered on transfer record this 16 day of June, 2011

*Kelly B. Arnold*  
Kelly B. Arnold, County Clerk

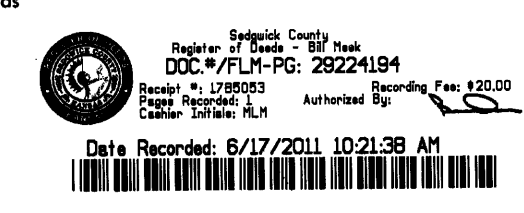


## REGISTER OF DEEDS CERTIFICATE

STATE OF KANSAS, SEDGWICK COUNTY) ss:  
This is to certify that this instrument was filed for record in the Register of Deeds office this day of June, 2011, at 10:21:35 AM, and is duly recorded.

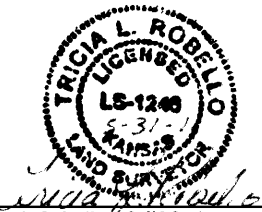
*Bill Meek*  
Bill Meek, Register of Deeds

*Tonya E. Buckingham*  
Tonya E. Buckingham, Deputy



## COUNTY SURVEYOR

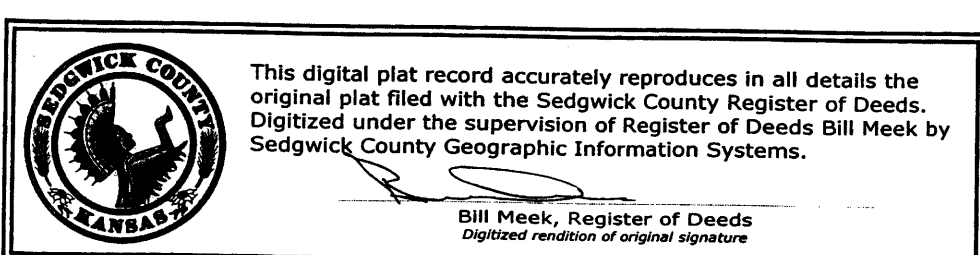
STATE OF KANSAS, SEDGWICK COUNTY) ss:  
Reviewed in accordance with K.S.A. 58-2005 on this 25 day of May, 2011.



*Tricia L. Robello*  
Tricia L. Robello, Deputy County Surveyor



411 N. WEBB ROAD  
WICHITA, KS. 67206  
316-684-9600



This digital plat record accurately reproduces in all details the original plat filed with the Sedgwick County Register of Deeds. Digitized under the supervision of Register of Deeds Bill Meek by Sedgwick County Geographic Information Systems.

Bill Meek, Register of Deeds  
Digitized rendition of original signature

FOR REFERENCE ONLY  
NOT TO SCALE

**BAUGHMAN COMPANY**  
315 Ellis St.  
Wichita, KS 67211  
316-262-7271  
BaughmanCo.com

Hampton Square Second  
**Copy Of Plat**

Stormwater Sewer Improv.

PROJECT NUMBER:  
21-07-E962

DESIGN: ENG DRAWN: JA

DATE: Aug. 26, 2011

SHEET 9 OF 9