

**GENERAL NOTES**

- THE CONTRACTOR SHALL COMPLY WITH ALL APPLICABLE SAFETY REGULATIONS. ALL CONSTRUCTION SHALL BE COMPLETED FOLLOWING CURRENT CITY STANDARD SPECIFICATIONS AND SPECIAL PROVISIONS.
- CONTRACTOR WILL BE REQUIRED TO PROVIDE NOTICE TO UTILITY COMPANIES A MINIMUM OF SEVENTY-TWO (72) HOURS PRIOR TO ANY EXCAVATION, AS FOLLOWS:  
KANSAS ONE-CALL 687-2470  
THE CONTRACTOR MUST NOTIFY THE FOLLOWING IN CASE OF AN EMERGENCY:  
AT&T 1-800-246-8464  
BLACK HILLS ENERGY (GAS) 1-800-694-8999  
CITY OF WICHITA WATER & SEWER 1-316-219-8921  
CITY OF WICHITA STORMWATER 1-316-268-4090  
CITY OF WICHITA TRAFFIC 1-316-268-4034  
COX COMMUNICATIONS 1-888-249-3530  
KANSAS GAS SERVICE 1-888-482-4950  
EVERGY 1-800-544-4857
- UTILITY SERVICE LINES, POLES, ETC. ARE TO BE ADJUSTED AS NECESSARY BY OTHERS PRIOR TO CONSTRUCTION UNLESS THE PLANS SPECIFICALLY CALL FOR THEIR ADJUSTMENT BY THE CONTRACTOR OR UNLESS THE PLANS SPECIFICALLY IDENTIFY A UTILITY TO BE ADJUSTED BY ITS OWNER DURING CONSTRUCTION. EXISTING UTILITIES AND THEIR LOCATION, AS SHOWN ON THE PLANS, REPRESENT THE BEST INFORMATION OBTAINABLE FOR DESIGN. THE CONTRACTOR WILL BE REQUIRED TO WORK AROUND EXISTING UTILITIES WITHIN THE RIGHT-OF-WAY WHICH DO NOT CONFLICT WITH PROPOSED CONSTRUCTION.
- RUBBLE FROM THE REMOVAL OF MISCELLANEOUS STRUCTURES AND EXCESS EXCAVATION WHICH IS TO BE WASTED SHALL BE DISPOSED OF ON SITES TO BE PROVIDED BY THE CONTRACTOR. THESE SITES SHALL BE APPROVED BY THE ENGINEER AS TO SUITABILITY, APPEARANCE AND SITE LOCATION. LOCATIONS, IN THE OPINION OF THE ENGINEER, THAT WILL LEAVE AN UNSIGHTLY APPEARANCE WILL NOT BE APPROVED. ALL DISPOSAL SITES MUST BE APPROVED BY THE KANSAS DEPARTMENT OF HEALTH AND ENVIRONMENT. MATERIAL EITHER STOCKPILED OR DISPOSED OF IN A FLOOD PLAIN WILL REQUIRE A KANSAS STATE BOARD OF AGRICULTURE PERMIT. ANY MATERIAL DUMPED IN WATERS OF THE UNITED STATES OR WETLANDS SUBJECT TO U.S. CORPS OF ENGINEERS PERMITTING REGULATIONS. ANY MATERIAL BURIED OR STOCKPILED BEYOND APPROVED CONSTRUCTION LIMITS WILL REQUIRE ADDITIONAL ARCHAEOLOGICAL INVESTIGATIONS UNLESS BURIED IN A PREVIOUSLY APPROVED BORROW LOCATION.
- TREES AND SHRUBS IN PUBLIC RIGHT-OF-WAY WHICH ARE IN DIRECT CONFLICT WITH PROPOSED NEW CONSTRUCTION SHALL BE REMOVED BY THE CONTRACTOR WITH THE CITY ENGINEER'S APPROVAL. TREES AND SHRUBS WHICH ARE NOT IN DIRECT CONFLICT WITH PROPOSED NEW CONSTRUCTION SHALL BE SAVED AND PROTECTED FROM DAMAGE.
- THE CONTRACTOR SHALL GIVE ALL PROPERTY OWNERS AND/OR TENANTS OF DEVELOPED PROPERTY ABUTTING THE CONSTRUCTION OF THIS PROJECT A MINIMUM OF TEN (10) DAYS NOTICE PRIOR TO START OF CONSTRUCTION.
- THE CONTRACTOR SHALL BE RESPONSIBLE FOR PRESERVING PROPERTY IRONS. THE CONTRACTOR WILL BE REQUIRED TO RE-ESTABLISH ANY PROPERTY IRONS WHICH ARE DAMAGED OR DESTROYED BY HIS CONSTRUCTION OPERATIONS. SUCH IRONS SHALL BE RE-ESTABLISHED BY A LICENSED LAND SURVEYOR IN ACCORDANCE WITH STATE LAWS.
- THE ENGINEERING DIVISION SHALL FIELD LOCATE WATER VALVES ONE TIME DURING CONSTRUCTION WHEN REQUESTED BY THE CONTRACTOR. IT SHALL BE THE CONTRACTOR'S RESPONSIBILITY TO PRESERVE SUCH FIELD LOCATIONS DURING THE CONSTRUCTION PROCESS. WATER VALVES, VALVE BOXES OR FIRE HYDRANTS DAMAGED DURING CONSTRUCTION SHALL BE REPAIRED BY CONTRACTOR AT HIS OWN EXPENSE. VALVE BOXES AND WATER METERS WITHIN THE PROJECT LIMITS SHALL BE ADJUSTED TO MATCH FIELD GRADES BY THE CONTRACTOR.
- THE CONTRACTOR SHALL NOTIFY THE CONSULTANT ENGINEER AND DAWNITA REINHARDT AT 650-0740 WITH THE CITY OF WICHITA WITH THE ANTICIPATED CONSTRUCTION START DATE AND NOTIFY THEM OF PROJECT COMPLETION. STAKING AND INSPECTION FOR THIS PROJECT WILL BE THE RESPONSIBILITY OF THE CONTRACTOR.
- IF TRAFFIC WILL BE IMPACTED BY CONSTRUCTION, A TRAFFIC CONTROL PLAN MUST BE SUBMITTED AND APPROVED BY THE CITY TRAFFIC ENGINEER AT [traffic@wichita.gov](mailto:traffic@wichita.gov) BEFORE CONSTRUCTION CAN BEGIN. THE CONTRACTOR SHALL BE RESPONSIBLE FOR ALL TRAFFIC CONTROL MEASURES TO FACILITATE CONSTRUCTION. ALL CONSTRUCTION ZONE MARKINGS AND SIGNAGE SHALL CONFORM TO THE LATEST VERSION OF THE MANUAL ON UNIFORM TRAFFIC CONTROL DEVICES (MUTCD) AS PUBLISHED BY THE U.S. DEPT. OF TRANSPORTATION, FEDERAL HIGHWAY ADMINISTRATION. ALL COSTS ASSOCIATED WITH CONSTRUCTION MARKINGS AND SIGNAGE SHALL BE THE CONTRACTOR'S RESPONSIBILITY.
- ALL ELEVATIONS SHOWN ARE NAVD 88.
- ALL AREAS DISTURBED DURING CONSTRUCTION THAT WILL NOT BE UNDER PROPOSED PAVEMENT SHALL BE RESTORED TO MATCH EXISTING CONDITIONS.
- ANY SIDEWALK, DRIVE APPROACH, OR STREET PAVEMENT REMOVED TO CONSTRUCT PROJECT MUST HAVE A PAVEMENT CUT PERMIT AND BE REPLACED BY CITY CONTRACTOR. PERMITS CAN BE OBTAINED BY CALLING 316-268-4501 OR 316-268-4480.
- CITY MAINTENANCE OF STORM SEWER ENDS AT THE LAST STRUCTURE IN THE EASEMENT OR RIGHT-OF-WAY.
- FOLLOW THE LINK BELOW FOR CONSTRUCTION DETAILS ON SPECIFIC CITY OF WICHITA STANDARD DETAILS: <http://www.wichita.gov/PWU/Pages/Regulations.aspx>
- CONTRACTOR SHALL LIMIT THE EXTENT OF TRENCH OPEN OVERNIGHT AND WEEKENDS TO LESS THAN 50 FEET.
- EXISTING UTILITIES AND THEIR LOCATION, AS SHOWN ON THE PLANS REPRESENT THE BEST INFORMATION OBTAINABLE FOR DESIGN. LOCATION INFORMATION HAS BEEN OBTAINED FROM THE VARIOUS COMPANIES AND IS EITHER FROM COMPANY UTILITY DRAWINGS OR COMPANY PROVIDED FIELD LOCATIONS. THE PLAN LOCATIONS SHOWN ARE NOT GUARANTEED. ADDITIONAL EXISTING UTILITIES MAY ALSO BE ENCOUNTERED.
- A PORTION OF EXCESS EXCAVATED MATERIAL SHALL BE MOUNDED AROUND MANHOLES WHICH EXTEND MORE THAN ONE (1) FOOT ABOVE THE EXISTING GROUND. SUCH MOUND SHALL BE CONSTRUCTED WITH NEW DEVELOPMENT A SIX (6) FOOT DIAMETER FLAT TOP WITH 4 TO 1 SIDE SLOPES DOWN TO THE ORIGINAL GROUND. THE ELEVATION OF THE FLAT TOP OF THE MOUND SHALL BE 0.4 FOOT BELOW THE TOP OF THE MANHOLE.
- GEOTECHNICAL REPORT AVAILABLE UPON REQUEST.
- CONTRACTOR SHALL PROVIDE POSITIVE DRAINAGE AWAY FROM ALL MANHOLE COVERS.
- THE INSPECTING FIRM SHALL SUBMIT TO THE CITY STORMWATER MAINTENANCE DIVISION A DIGITAL COPY OF THE CCTV INSPECTION OF THE CONDUITS AND STRUCTURES FOLLOWING CONSTRUCTION. THE DIGITAL FILE FORMATION SHALL BE COMPATIBLE WITH THE CITY INPUT TEMPLATE. A COPY OF THE TEMPLATE IS AVAILABLE UPON REQUEST AT 316-268-4090.
- WORK DONE UNDER THIS PROJECT IS SUBJECT TO THE CITY OF WICHITA REQUIREMENTS FOR "CONSTRUCTION OF INFRASTRUCTURE IMPROVEMENTS BY PRIVATE CONTRACT". THE CONTRACTOR SHALL BE FAMILIAR AND COMPLY WITH ALL OF THE REQUIREMENTS, INCLUDING BONDING, INSPECTION, TESTING, NOTIFICATION, PROVIDING AS-BUILT DRAWINGS, PAYING FOR ALL NECESSARY CONNECTIONS, AND/OR STREET REPAIR FEES AND PROVIDING PIPE MATERIAL AND OTHER CERTIFICATIONS.
- DEVELOPER FOR THIS PROJECT IS:  
TOPGOLF USA WCH, LLC  
8750 N. CENTRAL EXPRESSWAY,  
SUITE 1200  
DALLAS, TX 75231  
TODD WALDO  
TODD.WALDO@TOPGOLF.COM

**PRIVATE STORM WATER SEWER**

TO SERVE

**TOPGOLF - WICHITA, KS**

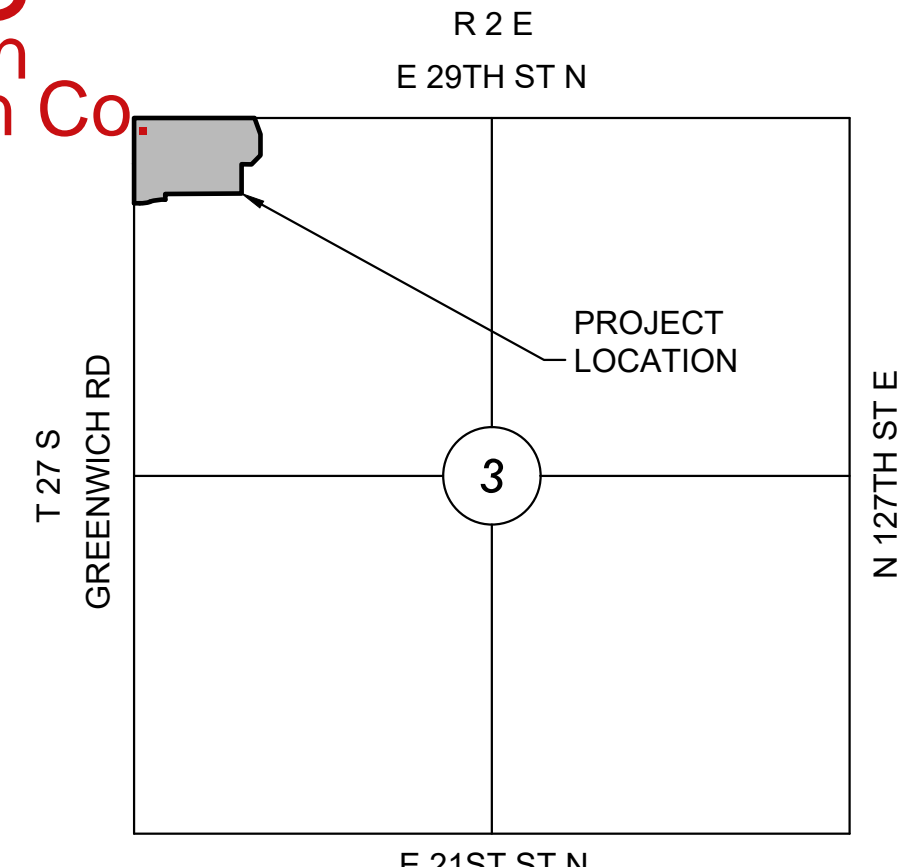
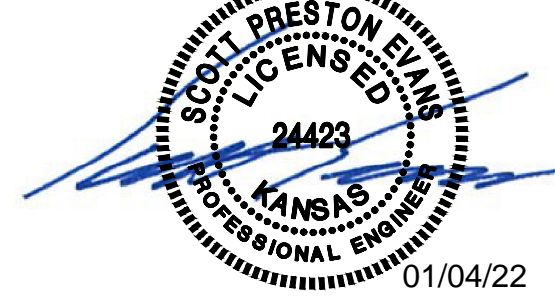
LOT 1, BLOCK 1 GREENWICH COMMONS ADDITION

PROJECT NO. 2021-000728PPD

THE CITY OF WICHITA, KANSAS  
GARY JANZEN, P.E. - CITY ENGINEER

ORG CODE 56030970

**AS BUILT PLANS**  
Contractor: Ewertz Excavation  
Inspector: Fred Smith, Baughman Co.  
As Builts by: KEK, 5/27/22



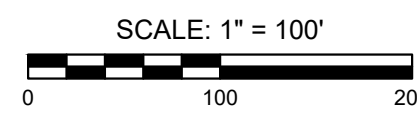
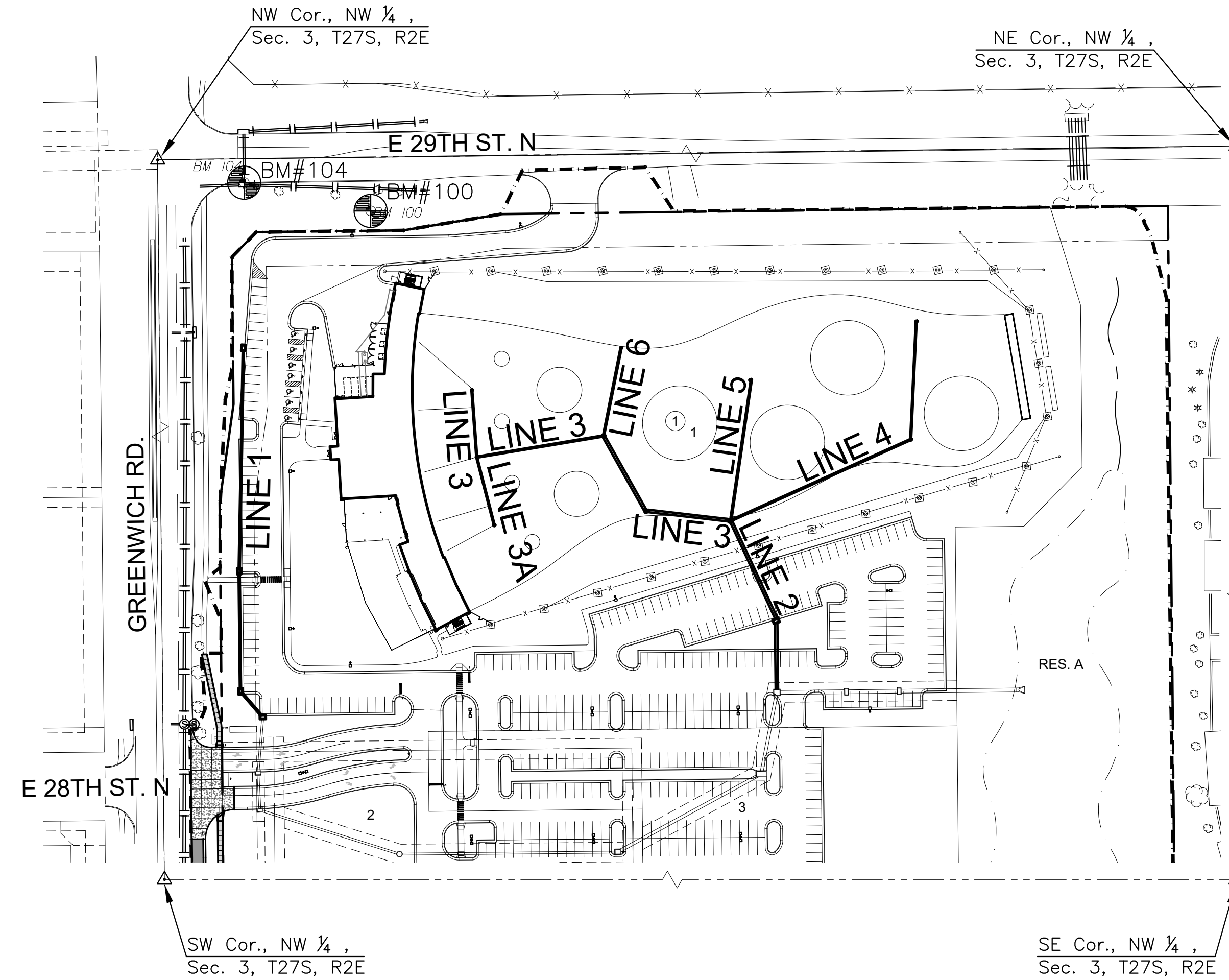
**VICINITY MAP**

No Scale

**INDEX TO DRAWINGS**

SHEET NO.	DESCRIPTION
01	TITLE SHEET
02-04	STORM WATER DETAILS
05	SWS LINE 1
06	SWS LINE 2
07	SWS LINE 3
08	SWS LINES 3A & 4
09	SWS LINES 5 & 6

SEE GENERAL NOTE #15 FOR CITY OF WICHITA STANDARD BMP LINK



**LEGEND**

- EXISTING SEWER
- PROPOSED SEWER

Stormwater Certification:  
New Development

Stormwater Permit # \_\_\_\_\_

NOI Permit # KS No. S-WA20-0121, Fed No. KSR116010

These construction plans were prepared in accordance with the current Stormwater management Regulations as set forth in the City of Wichita's Stormwater Management Ordinance 16.32 and the policies/guidelines presented in the Wichita/Sedgwick County Stormwater Manual.

Site Area (Acres) = 10.1

Disturbed Area (Acres) = 10.0

Water Quality Treatment: OFFSITE BMP PROGRAM

Downstream Channel Protection: REGIONAL DETENTION POND

Detention: REGIONAL DETENTION POND

The BMP used for this development is OFFSITE BMP PROGRAM

**BENCHMARKS**

BM100  
N: 1705070.085 E: 1686378.624 EL: 1391.763 (88)  
Description of Benchmark: 5/8" rebar with MKEC Aluminum Cap  
217 feet East and 52 feet South of Greenwich and 29th St N intersection.

BM 104  
N: 1705098.881 E: 1686249.581 EL: 1388.920 (88)  
Description of Benchmark: Square cut front center of curb inlet, 87.5 feet east and 23.5 feet south of intersection Greenwich Rd and 29th St N.

**CONTROL POINTS**

CP1  
N: 1705155.819 E: 1688806.255 EL: xxxxxx  
Description of control point: N1/4 Corner S3,T27S,R2E

CP2  
N: 1705122.158 E: 1686161.364 EL: xxxxxx  
Description of control point: NW Corner S3,T27S,R2E

CP3  
N: 1702441.198 E: 1686186.725 EL: xxxxxx  
Description of control point: W1/4 Corner S3,T27S,R2E

CP100  
N: 1705070.085 E: 1686378.624 EL: 1391.763  
Description of control point: Alum Cap

**DATUM**

The Horizontal Datum is based on the Kansas Coordinate System of 1983, NAD83(2011), EPOCH:2010.0000, South Zone. Coordinates shown have been modified to the ground using a combined adjustment factor of 1.0001200144. State Plane coordinates can be calculated by multiplying the shown values by 0.99988.

All elevations shown are based on the NAVD 88 vertical datum.

APPROVED AS NOTED  
BY WICHITA PUBLIC WORKS ENGINEERING  
AND STORMWATER DIVISION

Engineering approved by Benjamin Ferguson on this day the 4th of January, 2022  
Storm Water approved by Joe Hickle on this day the 4th of January, 2022

**NOTE TO CONTRACTORS**

Inspection and testing for this project is to be provided by a Licensed Consulting Engineering Firm under contract with the Owner/Developer. Said inspection to be in accordance with the City of Wichita standard construction engineering practices and certified by a Licensed Professional Engineer in the state of Kansas. No work shall be performed by the Contractor without such inspection, nor shall any work be commenced without written authorization by the City Engineer. All Construction and Materials shall comply with the current City of Wichita Specifications and Standards and Special Provisions. (on file and available at Wichita.gov).

An approved copy of these plans signed by City staff are required on-site.



PRIVATE STORM WATER SEWER PLANS FOR  
**TOPGOLF - WICHITA, KS**  
2975 N GREENWICH RD, WICHITA, KS

**PPD TITLE SHEET**

PROJECT NO. 2021-000728PPD

DATE 11/19/2021

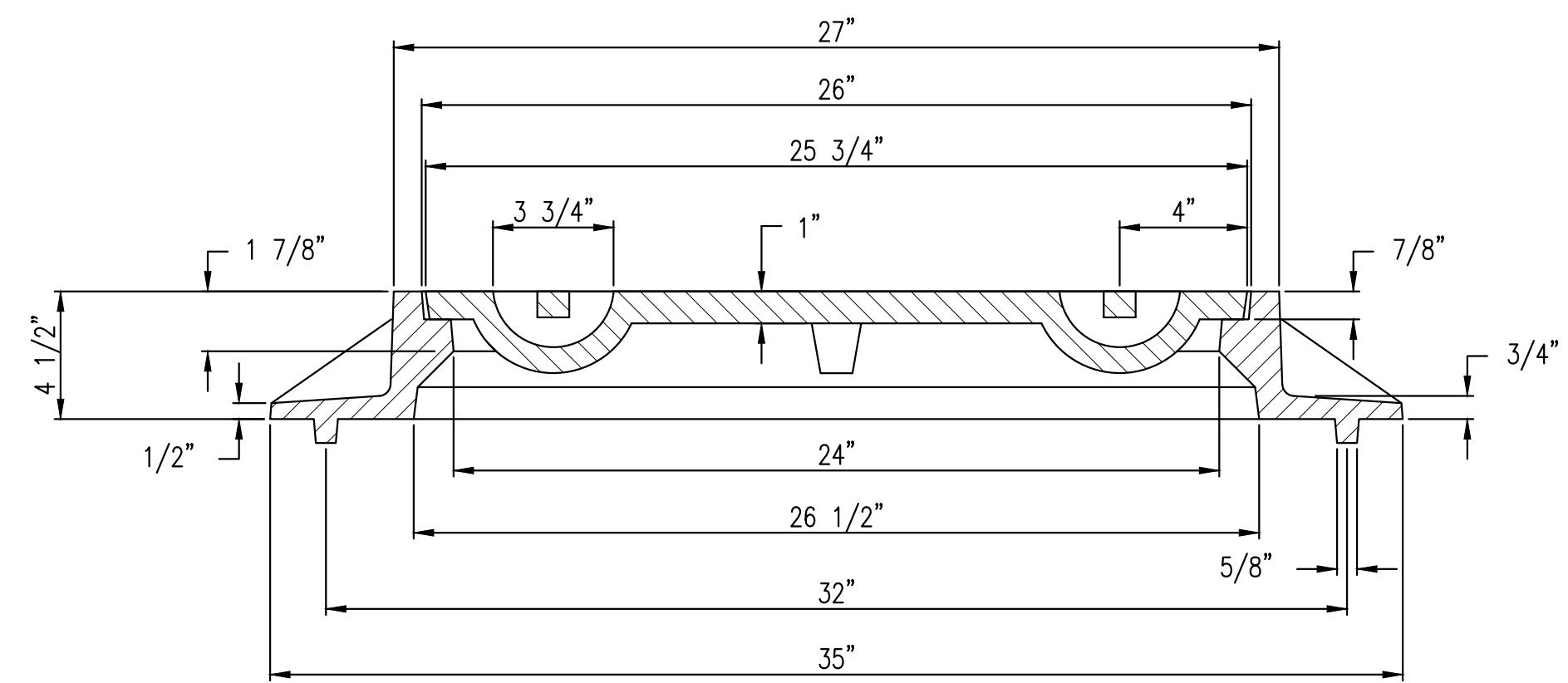
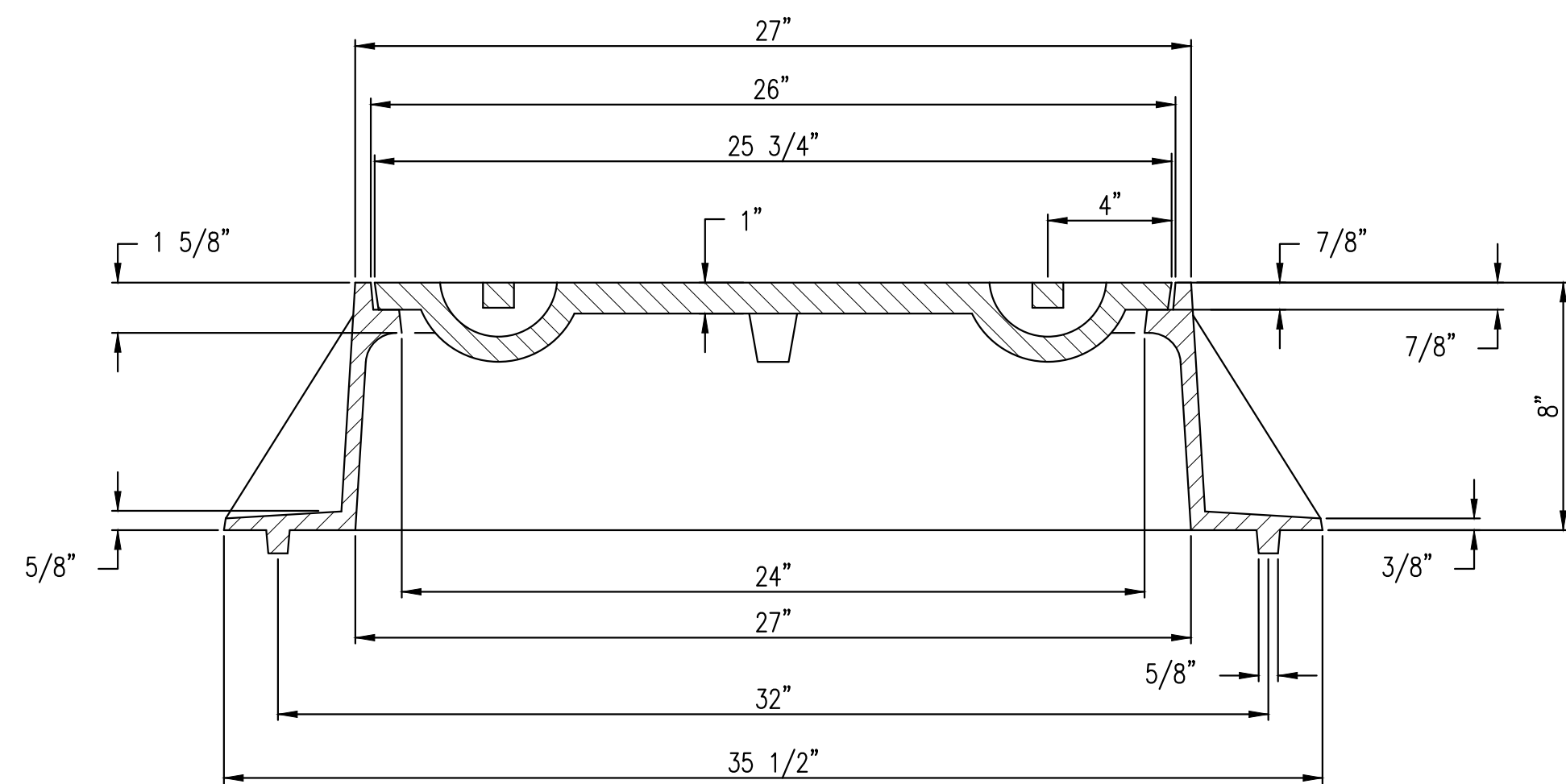
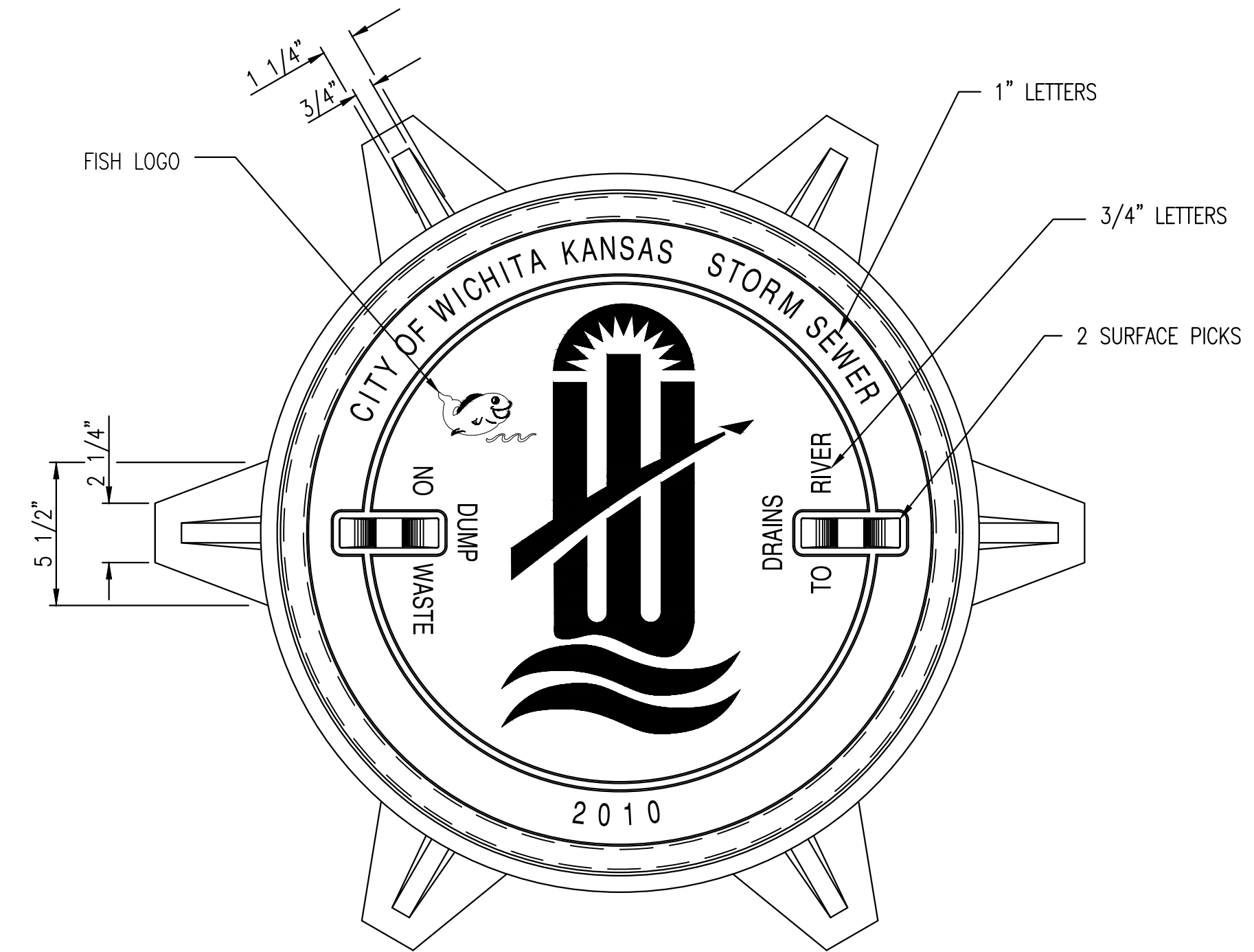
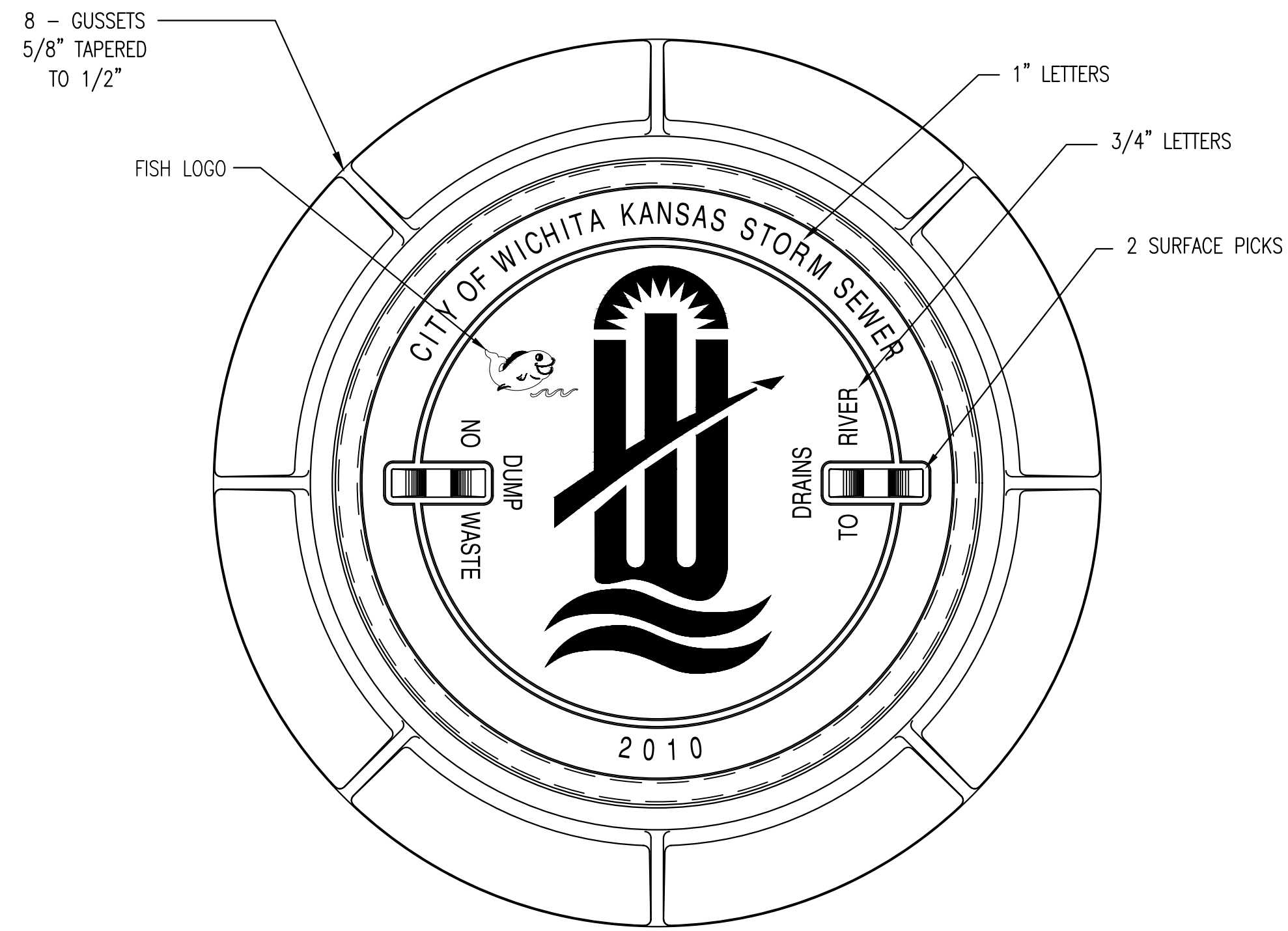
SCALE 1"=100'

DESIGNED LM DRAWN C>JL CHECKED SPE

NO.	REVISION	DATE

SHEET NO. 01 OF 09





**MANHOLE FRAME**  
**DEETER #1261 OR EJIW #1936-Z1**

- NOTE:
1. FURNISHED WITH MACHINED HORIZONTAL BEARING SURFACE.
  2. COVER TO BE DEETER #1261 OR EJIW #1936A.

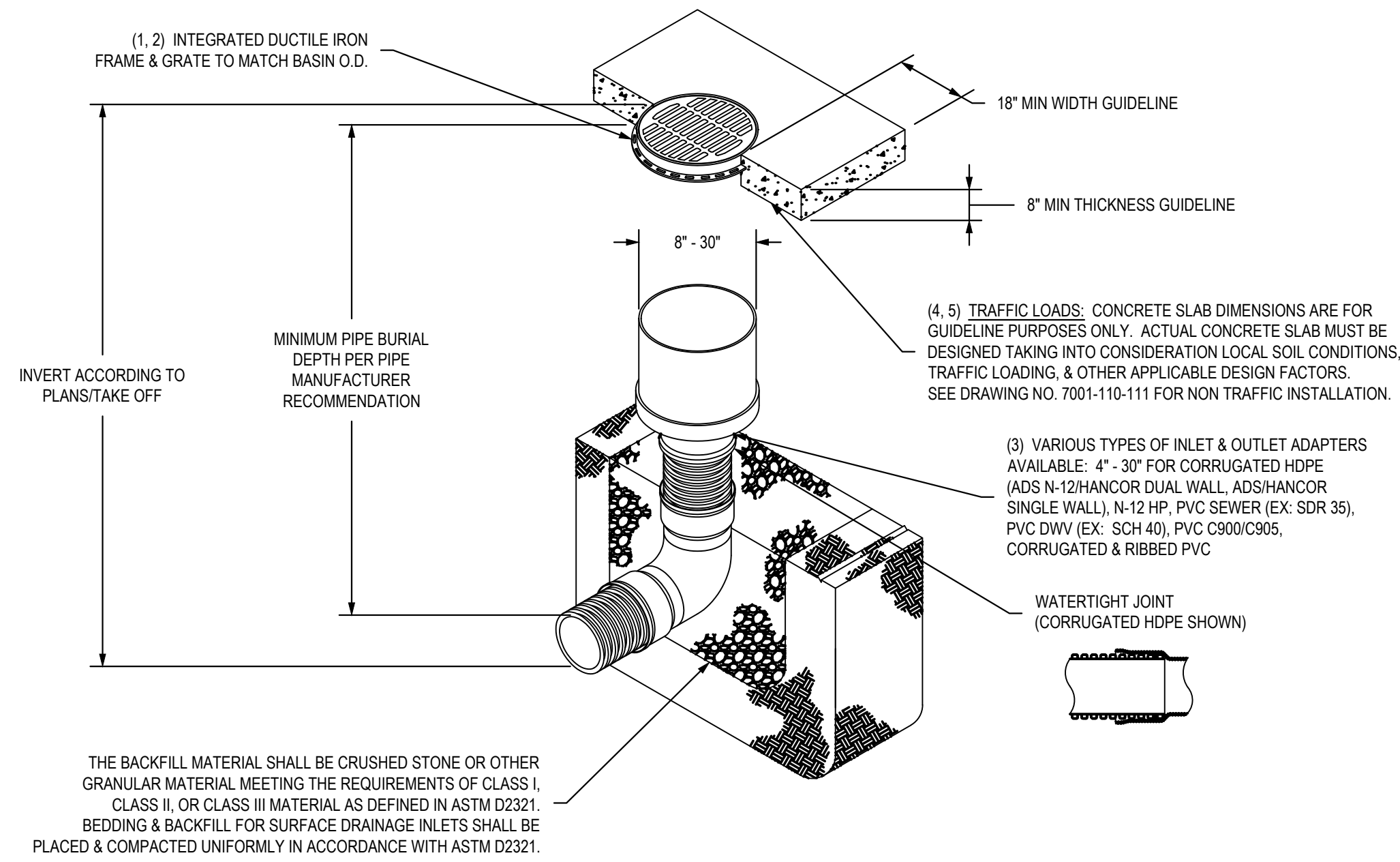
**INLET FRAME**  
**DEETER #2014 OR EJIW #1936-Z4**

- NOTE:
1. FURNISHED WITH MACHINED HORIZONTAL BEARING SURFACES.
  2. NOT TO BE USED UNDER PAVEMENT.
  3. COVER TO BE DEETER #1261 OR EJIW #1936A.



<b>MANHOLE/INLET FRAME AND COVER (STORM SEWER)</b>		
CITY ENGINEER <b>GARY L. JANZEN, P.E.</b>		
PROJECT NUMBER	OCA NUMBER	DATE
2021-000728PPD	####	11/19/2021
CITY ENGINEER'S OFFICE CITY HALL - SEVENTH FLOOR 455 NORTH MAIN STREET WICHITA, KANSAS 67202-1620 (316) 268-4501		SHEET <b>03 OF 09</b>

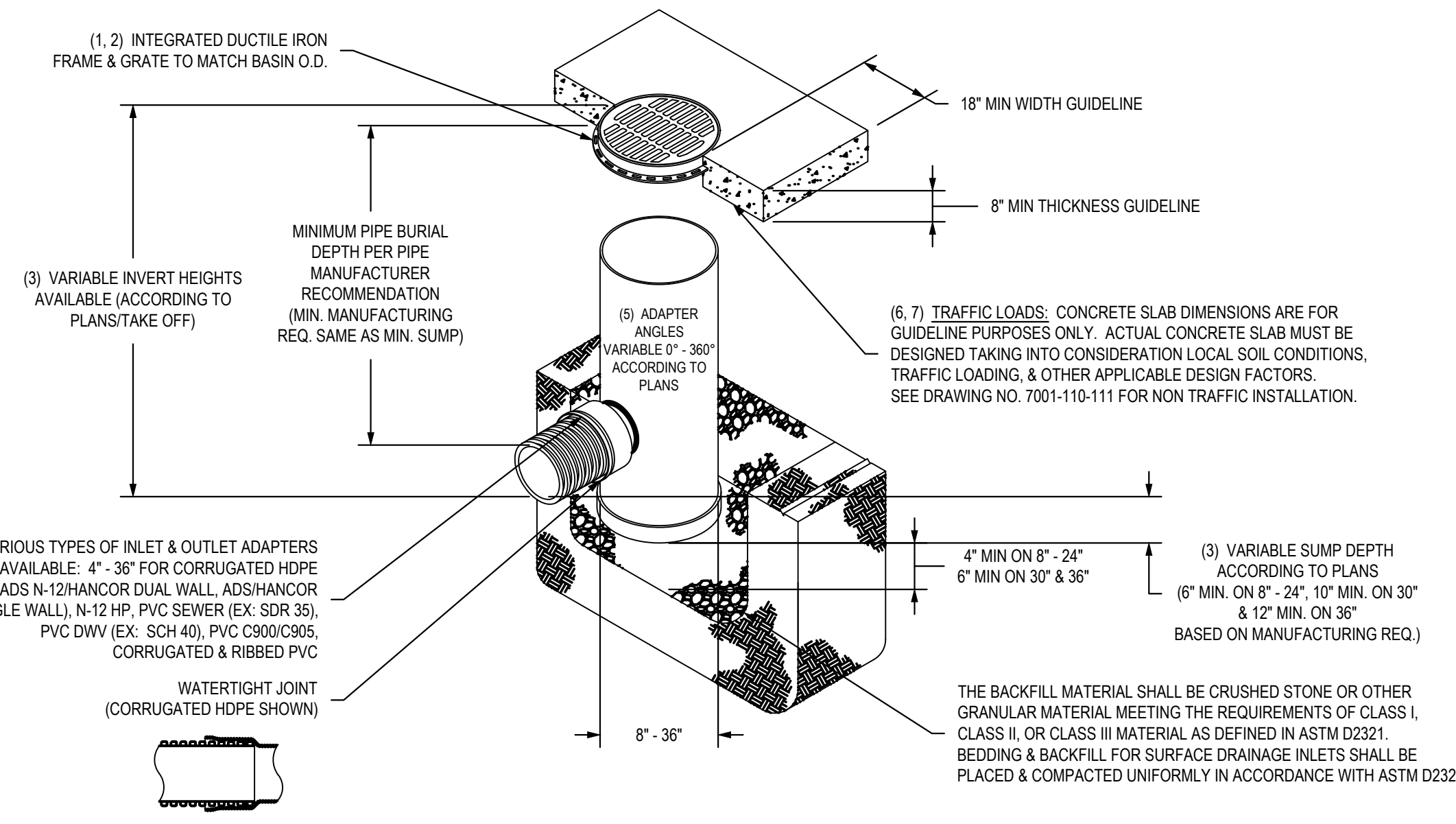
**NYLOPLAST INLINE DRAIN WITH STANDARD GRATE**



- 1 - 8" - 30" STANDARD GRATES SHALL BE DUCTILE IRON PER ASTM A536 GRADE 70-50-05.
- 2 - 12" - 30" FRAMES SHALL BE DUCTILE IRON PER ASTM A536 GRADE 70-50-05. 8" & 10" STANDARD GRATES FIT DIRECTLY ONTO INLINE DRAINS SEE DRAWING NO. 7003-110-000 & 7003-110-001.
- 3 - DRAINAGE CONNECTION STUB JOINT TIGHTNESS SHALL CONFORM TO ASTM D3212 FOR CORRUGATED HDPE (ADS N-12/HANCOR DUAL WALL), N-12 HP, & PVC SEWER (4" - 24").
- 4 - 12" - 30" STANDARD GRATES SHALL MEET H-20 LOAD RATINGS.
- 5 - 8" & 10" STANDARD GRATES ARE RATED FOR LIGHT DUTY APPLICATIONS ONLY. NO CONCRETE COLLAR NEEDED FOR LIGHT DUTY RATING.

THIS PRINT DISCLOSES SUBJECT MATTER IN WHICH NYLOPLAST HAS PROPRIETARY RIGHTS. THE RECEIPT OR POSSESSION OF THIS PRINT DOES NOT CONFER, TRANSFER, OR LICENSE THE USE OF THE DESIGN OR TECHNICAL INFORMATION SHOWN HEREIN. REPRODUCTION OF THIS PRINT OR ANY INFORMATION CONTAINED HEREIN, OR MANUFACTURE OF ANY ARTICLE HEREFROM, FOR THE DISCLOSURE TO OTHERS IS FORBIDDEN, EXCEPT BY SPECIFIC WRITTEN PERMISSION FROM NYLOPLAST. ©2021 NYLOPLAST		DRAWN BY EBC	MATERIAL	3130 VERONA AVE BUFORD, GA 30518 PHN (770) 932-2443 FAX (770) 932-2490 www.nyloplast-us.com
DATE 1-23-06	PROJECT NO./NAME	TITLE <b>NYLOPLAST</b> INLINE DRAIN WITH STANDARD GRATE QUICK SPEC INSTALLATION DETAIL		
REVISED BY NMH	DATE 03-15-16	DWG NO. 7003-110-022	REV J	
DWG SIZE A	SCALE 1:40	SHEET 1 OF 1		

**NYLOPLAST DRAIN BASIN WITH STANDARD GRATE**



- 1 - 8" - 30" STANDARD GRATES SHALL BE DUCTILE IRON PER ASTM A536 GRADE 70-50-05.
- 2 - 12" - 30" FRAMES SHALL BE DUCTILE IRON PER ASTM A536 GRADE 70-50-05. 8" & 10" STANDARD GRATES FIT DIRECTLY ONTO DRAIN BASINS WITH THE USE OF A PVC BODY TOP. SEE DRAWING NO. 7001-110-045.
- 3 - DRAIN BASIN TO BE CUSTOM MANUFACTURED ACCORDING TO PLAN DETAILS. RISERS ARE NEEDED FOR BASINS OVER 84" DUE TO SHIPPING RESTRICTIONS. SEE DRAWING NO. 7001-110-065.
- 4 - DRAINAGE CONNECTION STUB JOINT TIGHTNESS SHALL CONFORM TO ASTM D3212 FOR CORRUGATED HDPE (ADS N-12/HANCOR DUAL WALL), N-12 HP, & PVC SEWER (4" - 30").
- 5 - ADAPTERS CAN BE MOUNTED ON ANY ANGLE 0° TO 360° TO DETERMINE MINIMUM ANGLE BETWEEN ADAPTERS SEE DRAWING NO. 7001-110-012.
- 6 - 12" - 30" STANDARD GRATES SHALL MEET H-20 LOAD RATING.
- 7 - 8" & 10" STANDARD GRATES ARE RATED FOR LIGHT DUTY APPLICATIONS ONLY. NO CONCRETE COLLAR NEEDED FOR LIGHT DUTY RATING.

THIS PRINT DISCLOSES SUBJECT MATTER IN WHICH NYLOPLAST HAS PROPRIETARY RIGHTS. THE RECEIPT OR POSSESSION OF THIS PRINT DOES NOT CONFER, TRANSFER, OR LICENSE THE USE OF THE DESIGN OR TECHNICAL INFORMATION SHOWN HEREIN. REPRODUCTION OF THIS PRINT OR ANY INFORMATION CONTAINED HEREIN, OR MANUFACTURE OF ANY ARTICLE HEREFROM, FOR THE DISCLOSURE TO OTHERS IS FORBIDDEN, EXCEPT BY SPECIFIC WRITTEN PERMISSION FROM NYLOPLAST. ©2021 NYLOPLAST		DRAWN BY EBC	MATERIAL	3130 VERONA AVE BUFORD, GA 30518 PHN (770) 932-2443 FAX (770) 932-2490 www.nyloplast-us.com
DATE 1-23-06	PROJECT NO./NAME	TITLE <b>NYLOPLAST</b> DRAIN BASIN WITH STANDARD GRATE QUICK SPEC INSTALLATION DETAIL		
REVISED BY NMH	DATE 06-12-18	DWG NO. 7001-110-144	REV J	
DWG SIZE A	SCALE 1:40	SHEET 1 OF 1		

**Section 2721**

**Engineered Surface Drainage Products**

**GENERAL**

PVC surface drainage inlets shall include the drain basin type as indicated on the contract drawing and referenced within the contract specifications. The ductile iron grates for each of these fittings are to be considered an integral part of the surface drainage inlet and shall be furnished by the same manufacturer. The surface drainage inlets shall be as manufactured by Nyloplast a division of Advanced Drainage Systems, Inc., or prior approved equal.

**MATERIALS**

The drain basins required for this contract shall be manufactured from PVC pipe stock, utilizing a thermoforming process to reform the pipe stock to the specified configuration. The drainage pipe connection stubs shall be manufactured from PVC pipe stock and formed to provide a watertight connection with the specified pipe system. This joint tightness shall conform to ASTM D3212 for joints for drain and sewer plastic pipe using flexible elastomeric seals. The flexible elastomeric seals shall conform to ASTM F477. The pipe bell spigot shall be joined to the main body of the drain basin or catch basin. The raw material used to manufacture the pipe stock that is used to manufacture the main body and pipe stubs of the surface drainage inlets shall conform to ASTM D1784 cell class 12454.

The grates and frames furnished for all surface drainage inlets shall be ductile iron for structure sizes 8", 10", 12", 15", 18", 24", 30" and shall be made specifically for each basin so as to provide a round bottom flange that closely matches the diameter of the surface drainage inlet. Grates for drain basins shall be capable of supporting various wheel loads as specified by Nyloplast. 12" and 15" square grates will be hinged to the frame using pins. Ductile iron used in the manufacture of the castings shall conform to ASTM A536 grade 70-50-05. Grates and covers shall be provided painted black.

**INSTALLATION**

The specified PVC surface drainage inlet shall be installed using conventional flexible pipe backfill materials and procedures. The backfill material shall be crushed stone or other granular material meeting the requirements of class 1, class 2, or class 3 material as defined in ASTM D2321. Bedding and backfill for surface drainage inlets shall be well placed and compacted uniformly in accordance with ASTM D2321. The drain basin body will be cut at the time of the final grade. No brick, stone or concrete block will be required to set the grate to the final grade height. For load rated installations, a concrete slab shall be poured under and around the grate and frame. The concrete slab must be designed taking into consideration local soil conditions, traffic loading, and other applicable design factors. For other installation considerations such as migration of fines, ground water, and soft foundations refer to ASTM D2321 guidelines.

THIS PRINT DISCLOSES SUBJECT MATTER IN WHICH NYLOPLAST HAS PROPRIETARY RIGHTS. THE RECEIPT OR POSSESSION OF THIS PRINT DOES NOT CONFER, TRANSFER, OR LICENSE THE USE OF THE DESIGN OR TECHNICAL INFORMATION SHOWN HEREIN. REPRODUCTION OF THIS PRINT OR ANY INFORMATION CONTAINED HEREIN, OR MANUFACTURE OF ANY ARTICLE HEREFROM, FOR THE DISCLOSURE TO OTHERS IS FORBIDDEN, EXCEPT BY SPECIFIC WRITTEN PERMISSION FROM NYLOPLAST. ©2021 NYLOPLAST		DRAWN BY CJA	MATERIAL	3130 VERONA AVE BUFORD, GA 30518 PHN (770) 932-2443 FAX (770) 932-2490 www.nyloplast-us.com
DATE 3-10-00	PROJECT NO./NAME	TITLE <b>NYLOPLAST</b> 8 IN - 36 IN DRAIN BASIN SPECIFICATIONS		
REVISED BY NMH	DATE 02-21-18	DWG NO. 7001-110-011	REV J	
DWG SIZE A	SCALE 1:1	SHEET 1 OF 1		

**RECOMMENDED MINIMUM TRENCH WIDTHS**

PIPE DIAM.	MIN. TRENCH WIDTH
4" (100mm)	21" (533mm)
6" (150mm)	23" (584mm)
8" (200mm)	25" (660mm)
10" (250mm)	28" (711mm)
12" (300mm)	30" (762mm)
15" (375mm)	34" (864mm)
18" (450mm)	39" (991mm)
24" (600mm)	48" (1219mm)
30" (750mm)	56" (1422mm)
36" (900mm)	64" (1626mm)
42" (1050mm)	72" (1829mm)
48" (1200mm)	80" (2032mm)
60" (1500mm)	96" (2438mm)

**MINIMUM RECOMMENDED COVER BASED ON VEHICLE LOADING CONDITIONS\***

PIPE DIAM.	SURFACE LIVE LOADING CONDITION (75T AXLE LOAD) *		
	H-25 (305mm)	12" (305mm)	48" (1219mm)
12" - 48" (300mm - 1200mm)	12" (305mm)	12" (305mm)	60" (1524mm)
60" (1500mm)	24" (610mm)	24" (610mm)	1524mm

\* VEHICLES IN EXCESS OF 75T MAY REQUIRE ADDITIONAL COVER  
\*\*SEE BACKFILL REQUIREMENTS IN NOTE 6.

**MAXIMUM RECOMMENDED COVER BASED ON VEHICLE LOADING CONDITIONS**

PIPE DIAM.	CLASS I			CLASS II		CLASS III	
	COMPACTED	DUMPED	95%	90%	95%	90%	95%
4" (100mm)	37" (940mm)	18" (457mm)	25" (635mm)	18" (457mm)	18" (457mm)	18" (457mm)	18" (457mm)
6" (150mm)	44" (1118mm)	20" (508mm)	29" (737mm)	20" (508mm)	20" (508mm)	20" (508mm)	20" (508mm)
8" (200mm)	32" (813mm)	15" (381mm)	22" (559mm)	15" (381mm)	15" (381mm)	15" (381mm)	15" (381mm)
10" (250mm)	38" (965mm)	18" (457mm)	26" (660mm)	18" (457mm)	18" (457mm)	18" (457mm)	18" (457mm)
12" (300mm)	35" (889mm)	17" (430mm)	24" (610mm)	17" (430mm)	17" (430mm)	17" (430mm)	17" (430mm)
15" (375mm)	38" (965mm)	17" (430mm)	25" (635mm)	17" (430mm)	17" (430mm)	17" (430mm)	17" (430mm)
18" (450mm)	36" (914mm)	17" (430mm)	24" (610mm)	17" (430mm)	17" (430mm)	17" (430mm)	17" (430mm)
24" (600mm)	28" (711mm)	13" (330mm)	20" (508mm)	13" (330mm)	13" (330mm)	13" (330mm)	13" (330mm)
30" (750mm)	28" (711mm)	13" (330mm)	20" (508mm)	13" (330mm)	13" (330mm)	13" (330mm)	13" (330mm)
36" (900mm)	26" (660mm)	12" (305mm)	18" (457mm)	12" (305mm)	12" (305mm)	12" (305mm)	12" (305mm)
42" (1050mm)	23" (584mm)	11" (279mm)	16" (406mm)	11" (279mm)	11" (279mm)	11" (279mm)	11" (279mm)
48" (1200mm)	25" (635mm)	11" (279mm)	17" (430mm)	11" (279mm)	11" (279mm)	11" (279mm)	11" (279mm)
60" (1500mm)	25" (635mm)	11" (279mm)	17" (430mm)	11" (279mm)	11" (279mm)	11" (279mm)	11" (279mm)

FILL HEIGHT TABLE GENERATED USING AASHTO SECTION 12, LOAD RESISTANCE FACTOR DESIGN (LRFD) PROCEDURE WITH THE FOLLOWING ASSUMPTIONS:  
NO HYDROSTATIC PRESSURE,  
UNIT WEIGHT OF SOIL (Ys) = 120 PCF

REV.	DESCRIPTION	DATE	BY	CHKD
6	INITIAL BACKFILL	04/02/20	JAB	
REV.				

**TRENCH INSTALLATION DETAIL (N-12 PER AASHTO)**

DRAWING NUMBER: STD-101

4540 TRUHEMAN BLVD  
HILLIARD, OHIO 43026

ADVANCED DRAINAGE SYSTEMS, INC. (ADS) HAS PREPARED THIS DETAIL BASED ON INFORMATION PROVIDED TO ADS. THIS DRAWING IS INTENDED TO DEPICT THE COMPONENTS AND RELATIONSHIP AS SPECIFIED BY THE ENGINEER. NOR HAS ADS INDEPENDENTLY VERIFIED THE INFORMATION SUPPLIED. THE INSTALLATION DETAILS PROVIDED HEREIN ARE GENERAL RECOMMENDATIONS AND ARE NOT SPECIFIC FOR THIS PROJECT. THE DESIGN ENGINEER SHALL REVIEW THESE DETAILS PRIOR TO CONSTRUCTION. IT IS THE DESIGN ENGINEERS RESPONSIBILITY TO ENSURE THE DETAILS PROVIDED HEREIN MEETS OR EXCEEDS THE APPLICABLE NATIONAL, STATE, OR LOCAL REQUIREMENTS AND TO ENSURE THAT THE DETAILS PROVIDED HEREIN ARE ACCEPTABLE FOR THIS PROJECT.

©2021 MKEC Engineering All Rights Reserved  
These drawings and their contents, including, but not limited to, all concepts, designs, & ideas are the exclusive property of MKEC Engineering (MKEC), and may not be used or reproduced in any way without the express consent of MKEC.

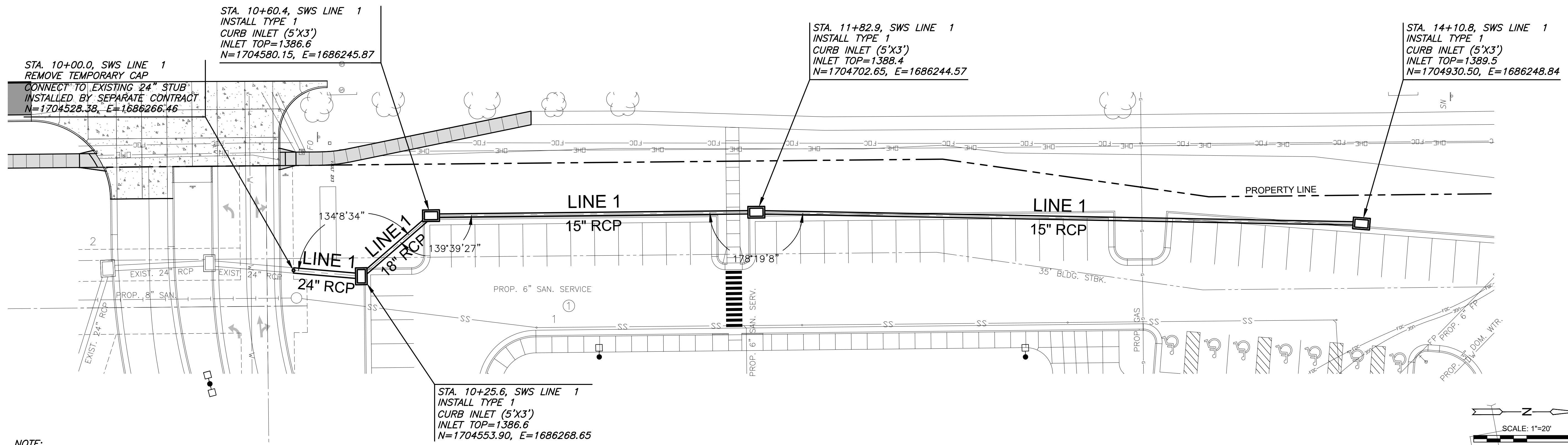
**MISC. SWS DETAILS**

PROJECT NO.	2021-000728PPD	
DATE	11/19/2021	
SCALE	N.T.S.	
DESIGNED	DRAWN	CHECKED
LM	CJL	SPE

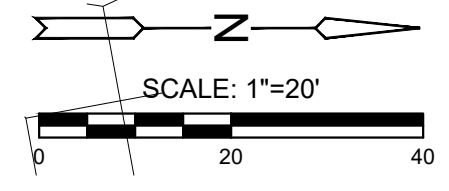
NO.	REVISION	DATE

PLOTTED: Tuesday, January 04, 2022 @ 09:59AM

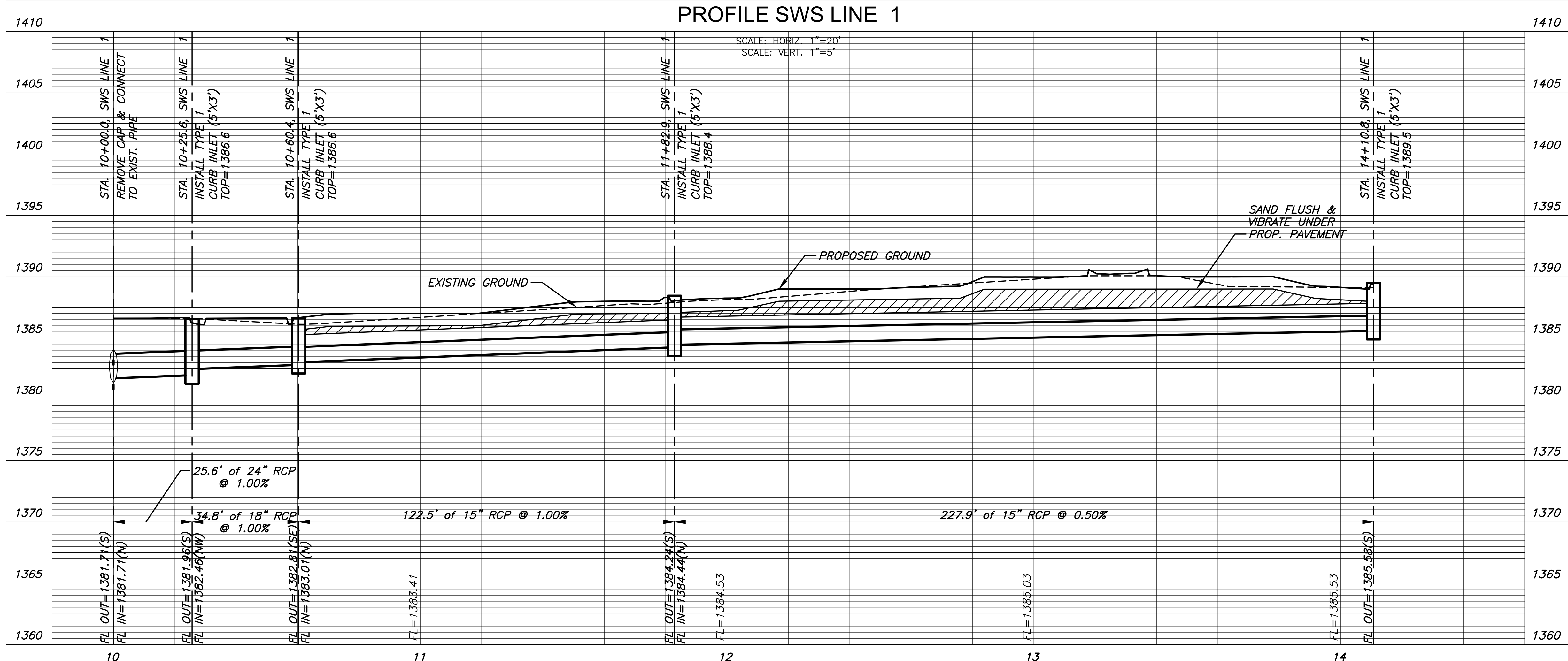
W:\NAS30\WOL\PROJECTS\2021\1010454\_ARCO\_TOP\_GOLF\_WICHITA\1010454\_CADD\SHOTS\05\_CIVIL\SWS\TOPGOLF\_PFD21434\_TG\_PFD LINE 1.DWG



**NOTE:**  
CONTRACTOR TO VERIFY THE DEPTH AND LOCATION OF EXISTING UTILITIES PRIOR TO CONSTRUCTION.



**PLAN SWS LINE 1**  
**PROFILE SWS LINE 1**



PRIVATE STORM WATER SEWER PLANS FOR  
**TOPGOLF - WICHITA, KS**  
2975 N GREENWICH RD, WICHITA, KS

©2021 MKEC Engineering All Rights Reserved  
www.mkec.com  
These drawings and their contents, including, but not limited to, all concepts, designs, & ideas are the exclusive property of MKEC Engineering (MKEC), and may not be used or reproduced in any way without the express consent of MKEC.

**SWS LINE 1**

PROJECT NO.	2021-000728PPD	
DATE	11/19/2021	
SCALE	1"=20'	
DESIGNED	DRAWN	CHECKED
LM	C-JL	SPE

NO.	REVISION	DATE

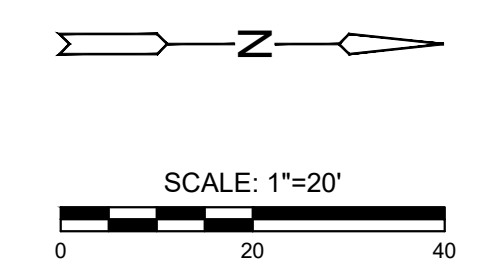
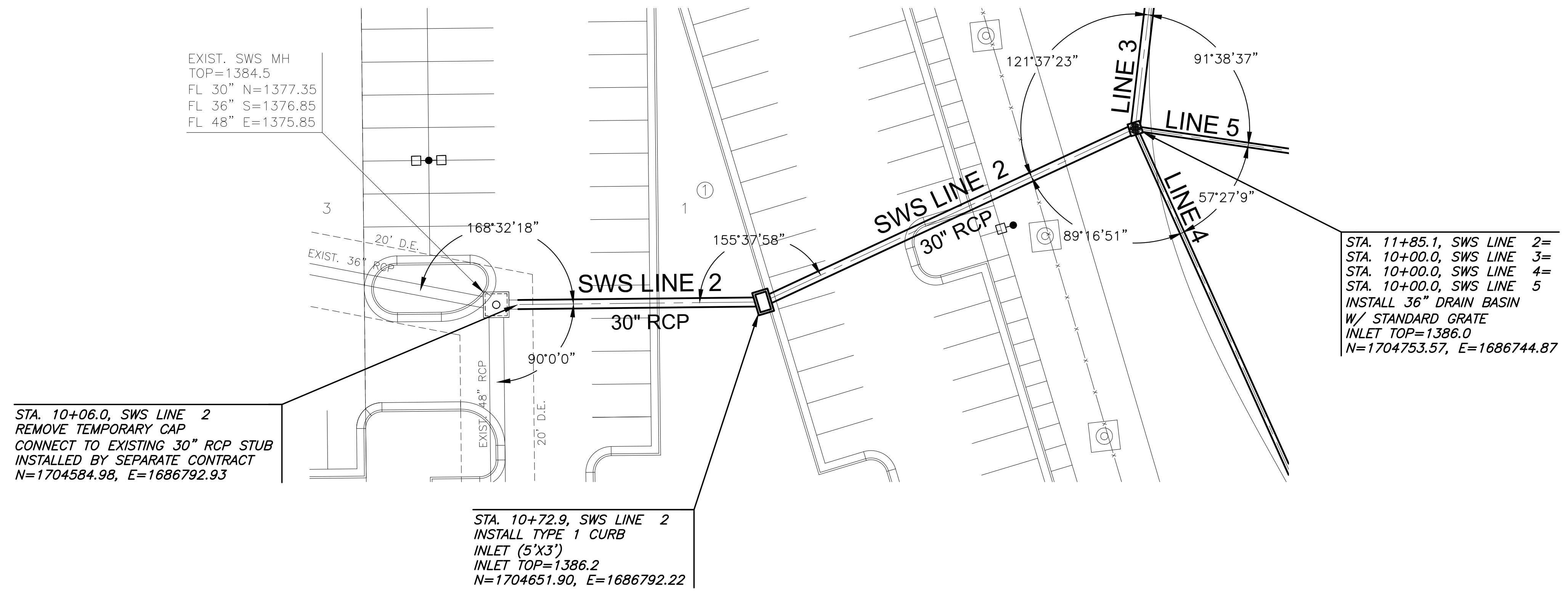
SHEET NO.  
**05 OF 09**

PLOTTED: Tuesday, January 04, 2022 @ 10:05AM

W:\PROJECTS\2021\101010434\_ARCO\_TOP\_GOLF\_WICHITA\0210434\_CADD\SHOTS\TOPGOLF\_PFD21434\_TG\_PFD LINE 2.DWG

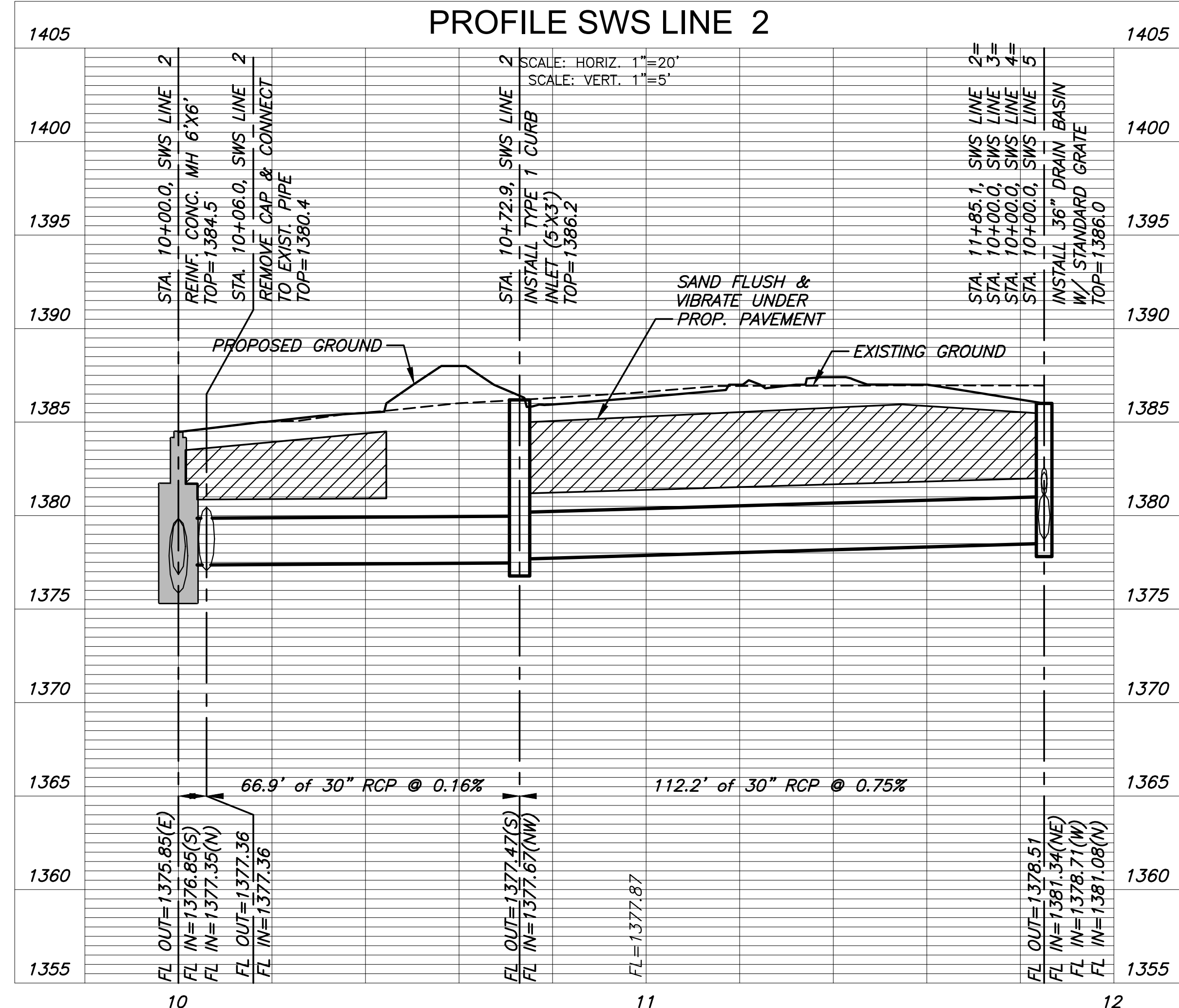


PRIVATE STORM WATER SEWER PLANS FOR  
**TOPGOLF - WICHITA, KS**  
2975 N GREENWICH RD, WICHITA, KS



**NOTE:**  
CONTRACTOR TO VERIFY THE  
DEPTH AND LOCATION OF EXISTING  
UTILITIES PRIOR TO CONSTRUCTION.

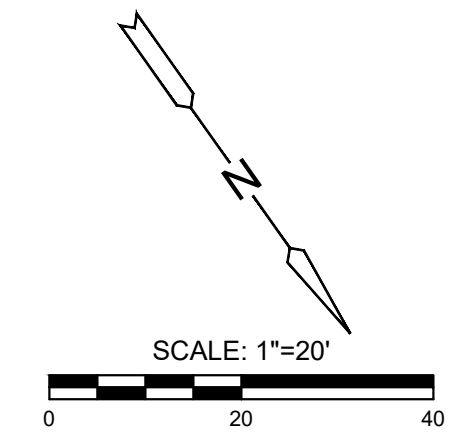
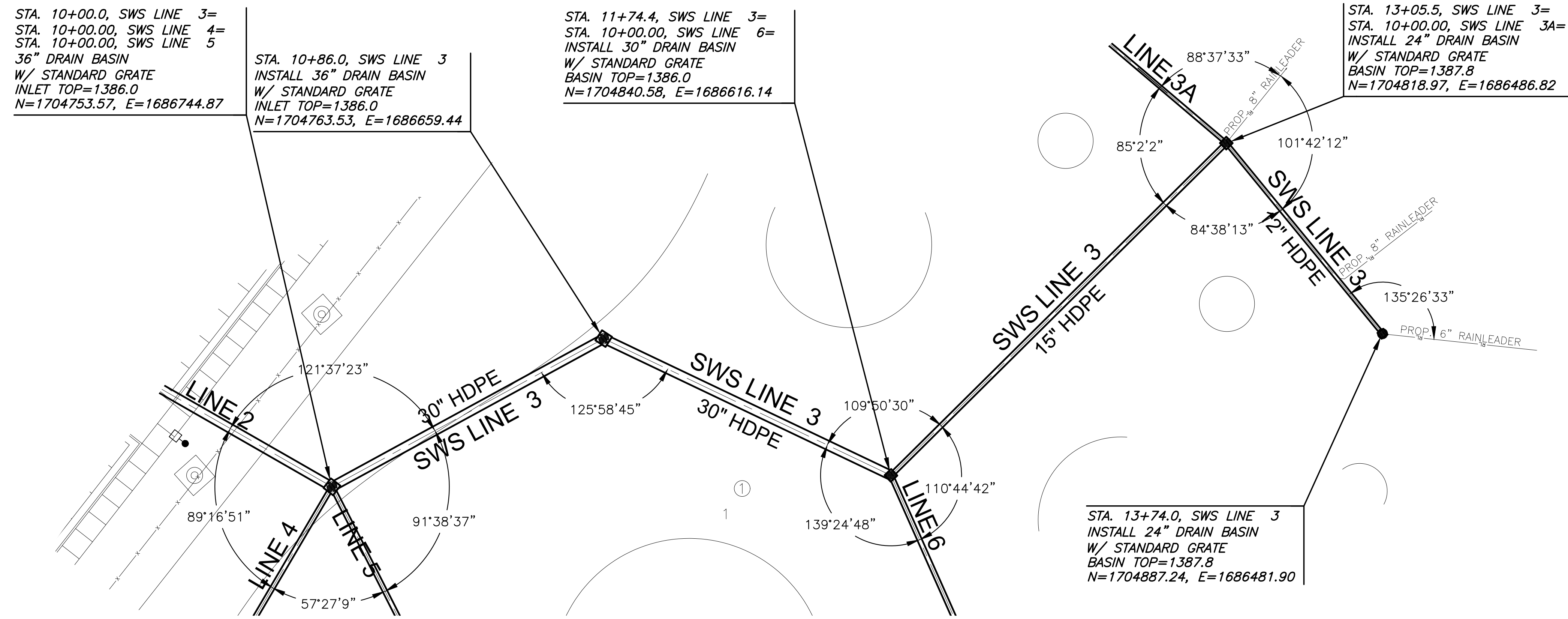
**PLAN SWS LINE 2**  
**PROFILE SWS LINE 2**



©2021  
MKEC Engineering  
All Rights Reserved  
www.mkec.com  
These drawings and their contents,  
including, but not limited to, all concepts,  
designs, & ideas are the exclusive  
property of MKEC Engineering (MKEC),  
and may not be used or reproduced in any  
way without the express consent of MKEC.

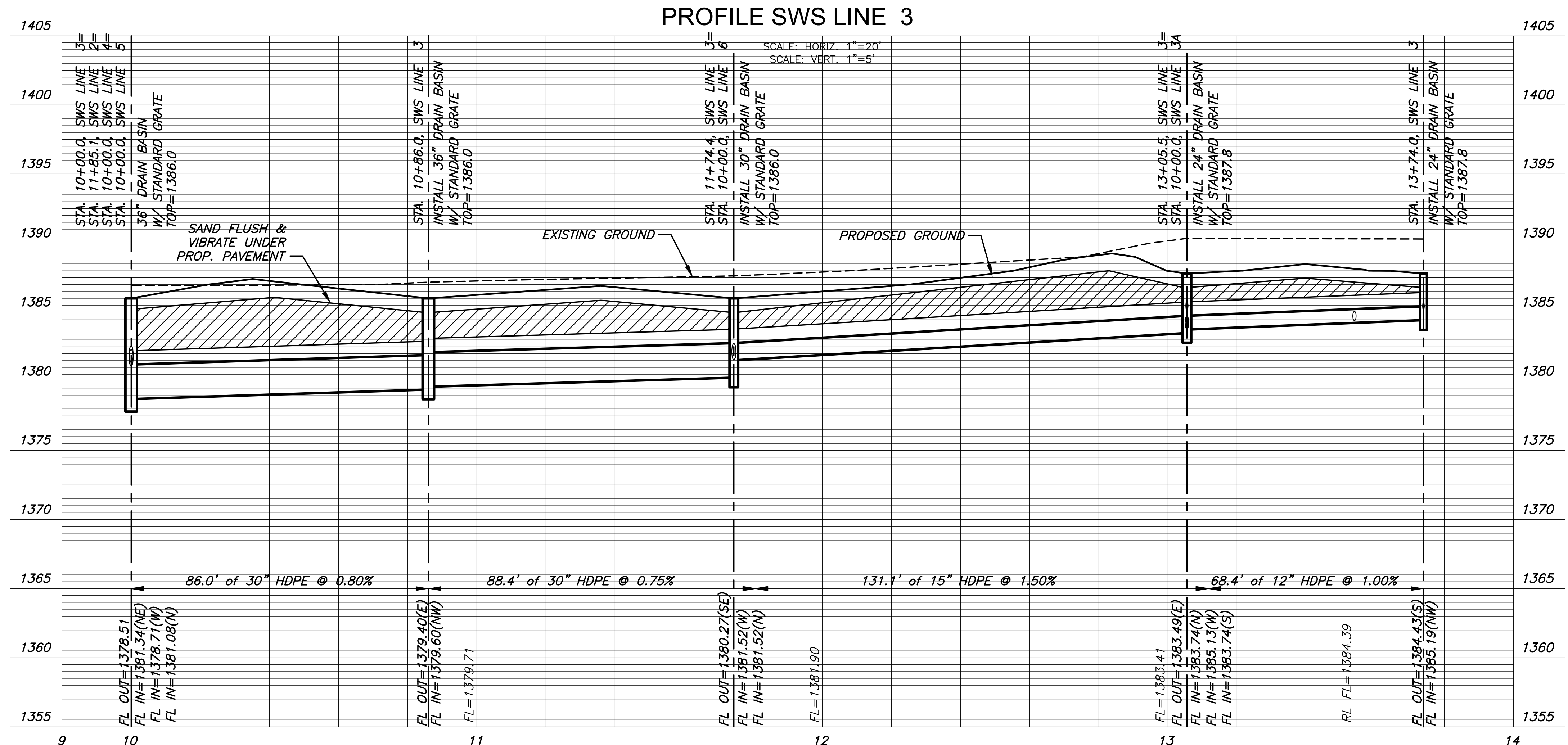
SWS LINE 2		
PROJECT NO.	2021-000728PPD	
DATE	11/19/2021	
SCALE	1"=20'	
DESIGNED	DRAWN	CHECKED
LM	C-JL	SPE
NO.	REVISION	DATE
SHEET NO. 06 OF 09		

W:\2021\07\PROJECTS\2021\10\10434\_ARCO\_TOP\_GOLF\_WICHITA\02\10434\_CADD\SHOTS\05\_CIVIL\SWS\TOPGOLF\_PFD21434\_TG\_PFD\_1.DWG  
 PLOTTED: Tuesday, January 04, 2022 @ 10:31AM



**NOTE:**  
 CONTRACTOR TO VERIFY THE  
 DEPTH AND LOCATION OF EXISTING  
 UTILITIES PRIOR TO CONSTRUCTION.

**PLAN SWS LINE 3**  
**PROFILE SWS LINE 3**

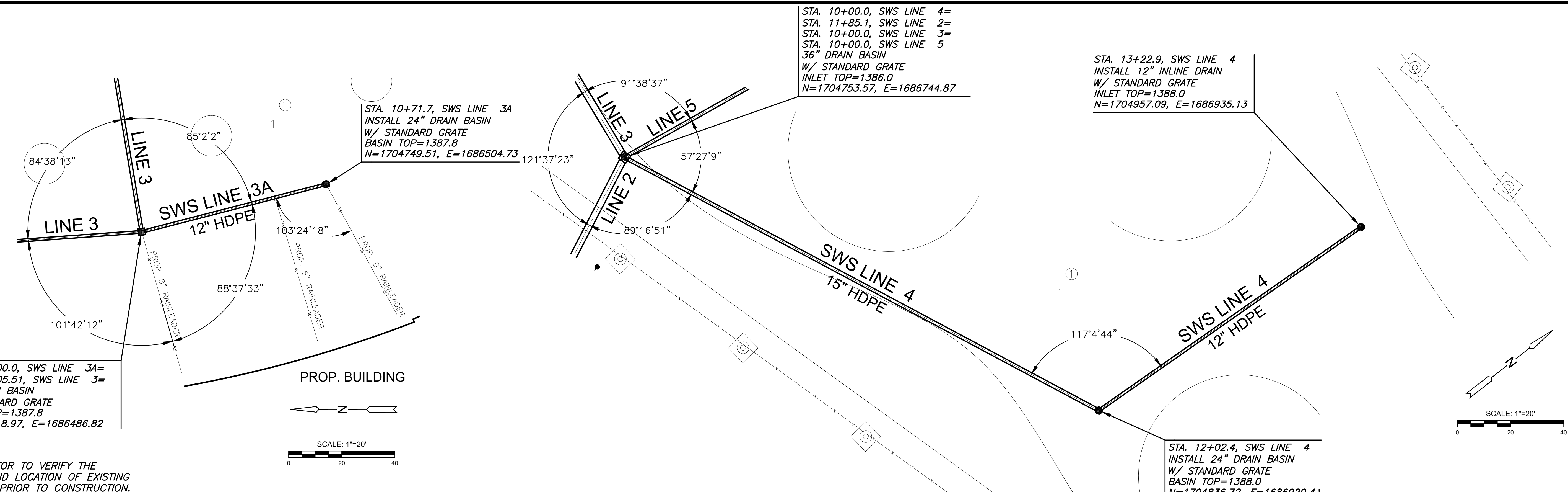


PRIVATE STORM WATER SEWER PLANS FOR  
**TOPGOLF - WICHITA, KS**  
 2975 N GREENWICH RD, WICHITA, KS

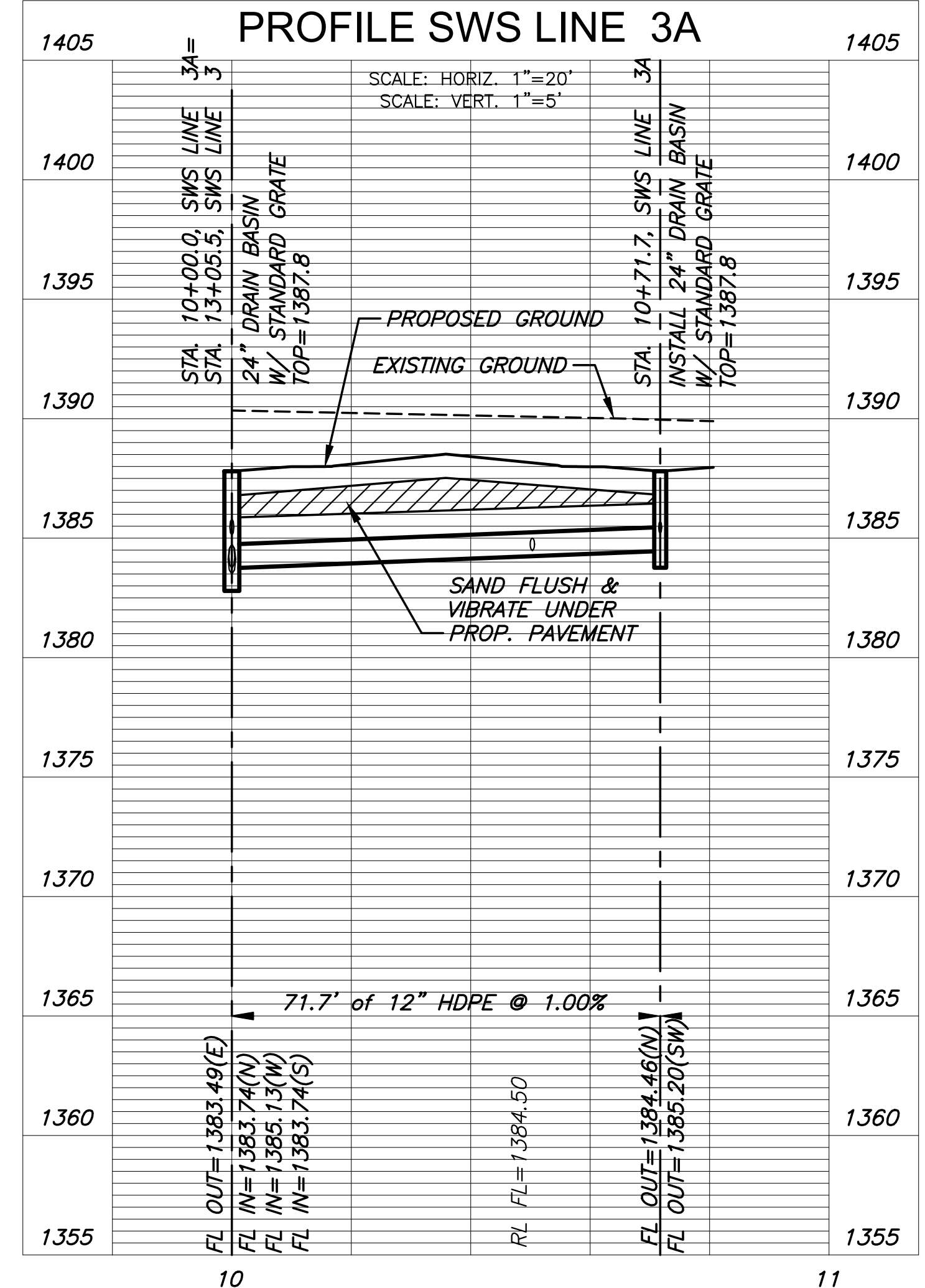
©2021  
 MKEC Engineering  
 All Rights Reserved  
 www.mkec.com  
 These drawings and their contents, including, but not limited to, all concepts, designs, & ideas are the exclusive property of MKEC Engineering (MKEC), and may not be used or reproduced in any way without the express consent of MKEC.

SWS LINE 3		
PROJECT NO.	2021-000728PPD	
DATE	11/19/2021	
SCALE	1"=20'	
DESIGNED	DRAWN	CHECKED
LM	C-JL	SPE
NO.	REVISION	DATE
SHEET NO.		
07 OF 09		

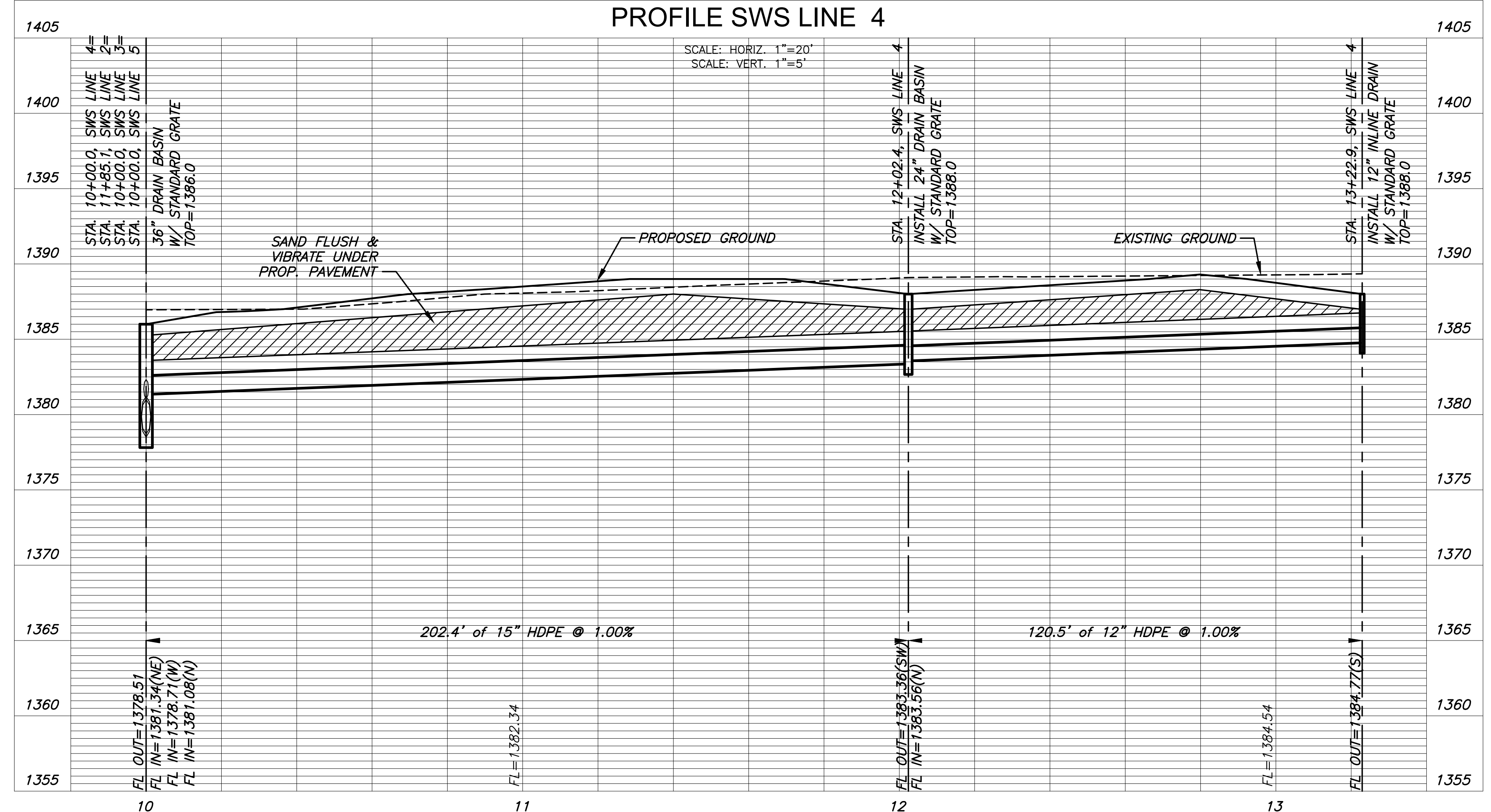
W:\2021\01\10\10454\_ARCO\_TOP\_GOLF\_WICHITA\02\10434\_CADD\SWSTOPGOLF\_PFD21434\_TG\_PFD\_P1A & 2.DWG  
 PLOTTED: Tuesday, January 04, 2022 @ 10:22AM



PLAN SWS LINE 3A  
PROFILE SWS LINE 3A



PLAN SWS LINE 4  
PROFILE SWS LINE 4



PRIVATE STORM WATER SEWER PLANS FOR  
**TOPGOLF - WICHITA, KS**  
 2975 N GREENWICH RD, WICHITA, KS

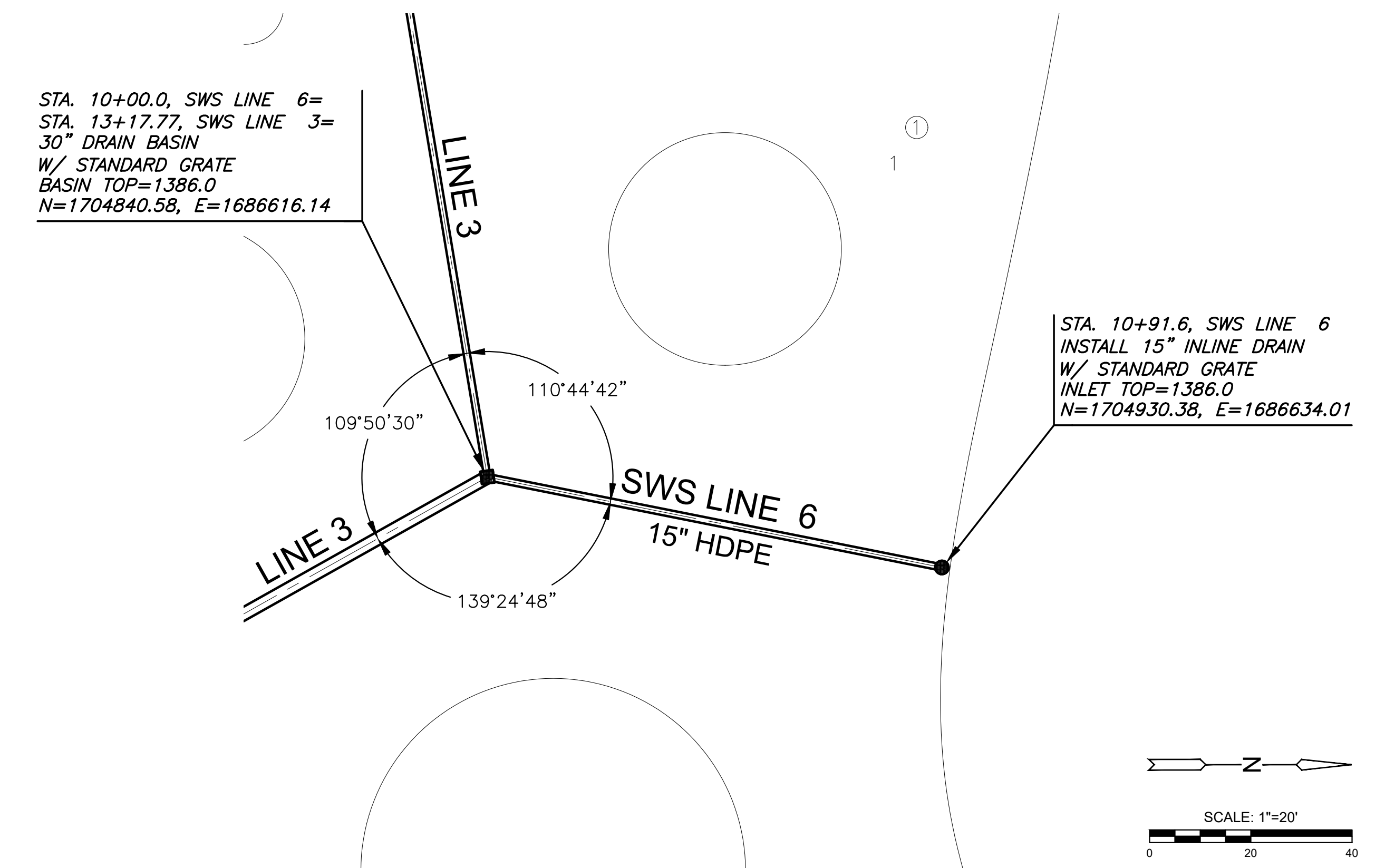
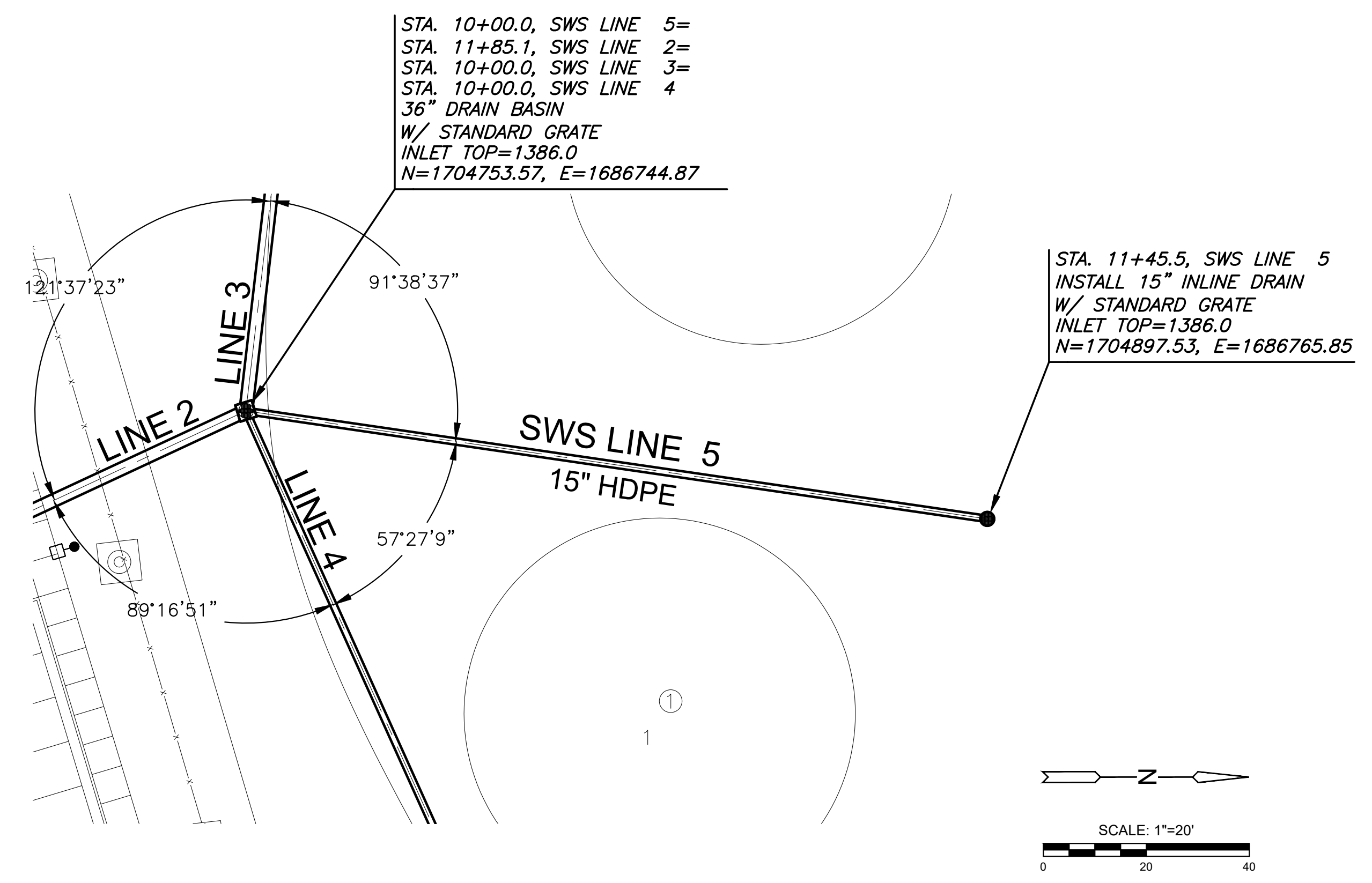
©2021  
 MKEC Engineering  
 All Rights Reserved  
 www.mkec.com  
 These drawings and their contents, including, but not limited to, all concepts, designs, & ideas are the exclusive property of MKEC Engineering (MKEC), and may not be used or reproduced in any way without the express consent of MKEC.

SWS LINES 3A & 4

PROJECT NO.	2021-000728PPD	
DATE	11/19/2021	
SCALE	1"=20'	
DESIGNED	DRAWN	CHECKED
LM	C-JL	SPE

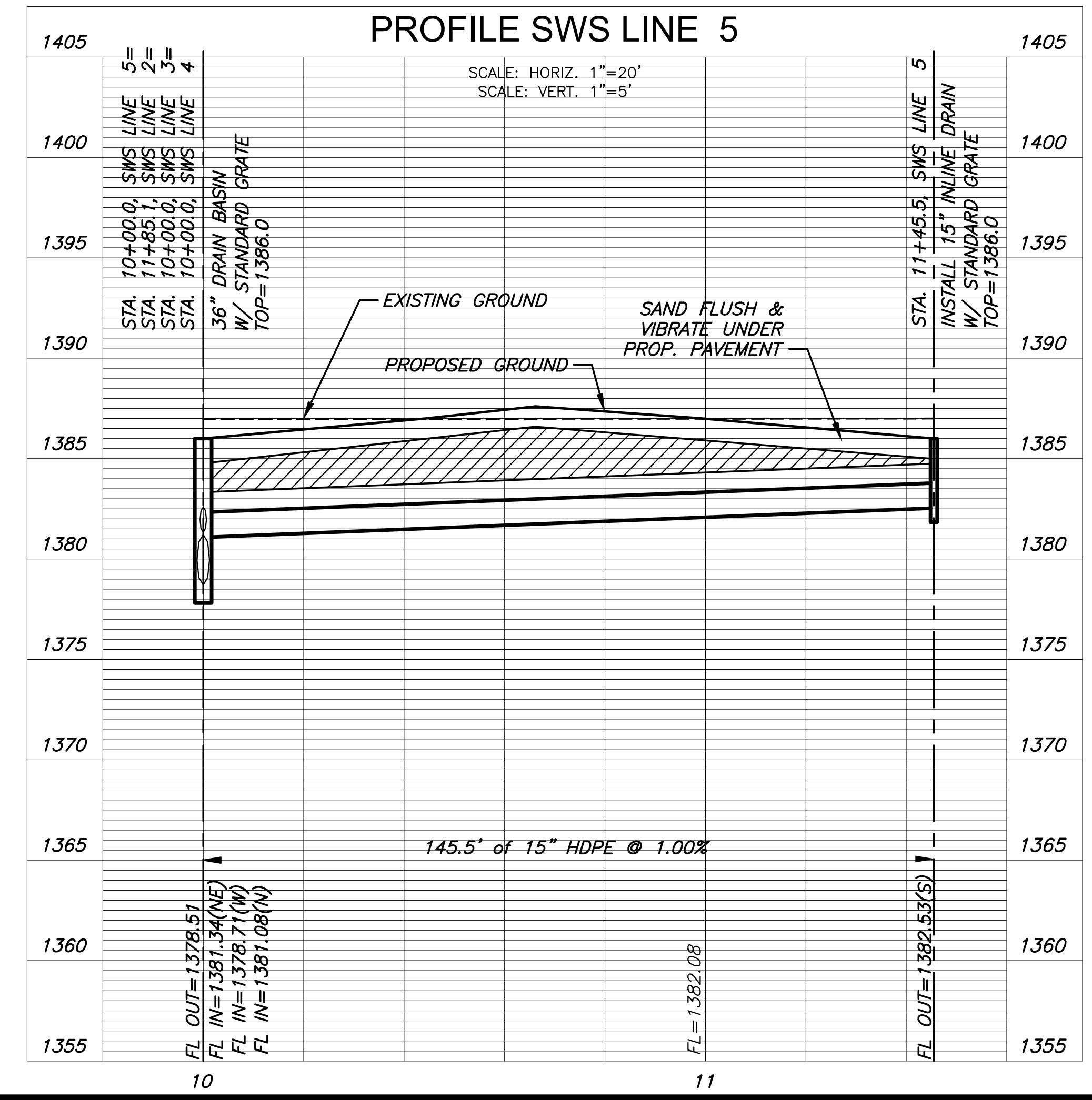
NO.	REVISION	DATE

W:\12183\12183\PROJECTS\2021\1010454\_ARCO\_TOP\_GOLF\_WICHITA\1010454\_CADD\DWG\CIVIL\SWS\TOPGOLF\_PFD21434\_TG\_PFD\_RL3\_4.dwg  
 PLOTTED: Tuesday, January 04, 2022 @ 10:32AM

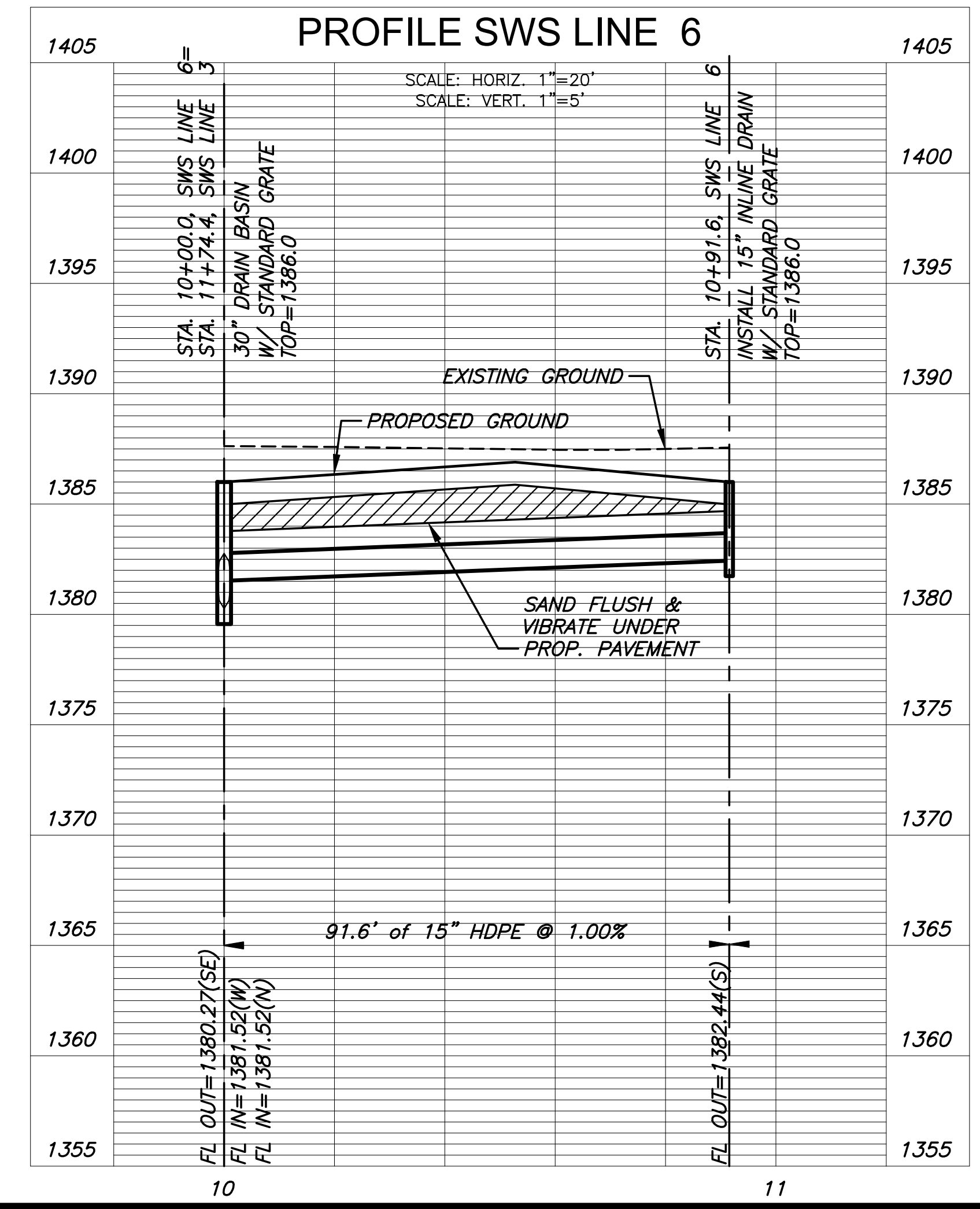


**NOTE:**  
 CONTRACTOR TO VERIFY THE  
 DEPTH AND LOCATION OF EXISTING  
 UTILITIES PRIOR TO CONSTRUCTION.

**PLAN SWS LINE 5**  
**PROFILE SWS LINE 5**



**PLAN SWS LINE 6**  
**PROFILE SWS LINE 6**



PRIVATE STORM WATER SEWER PLANS FOR  
**TOPGOLF - WICHITA, KS**  
 2975 N GREENWICH RD, WICHITA, KS

©2021  
 MKEC Engineering  
 All Rights Reserved  
 www.mkec.com  
 These drawings and their contents, including, but not limited to, all concepts, designs, & ideas are the exclusive property of MKEC Engineering (MKEC), and may not be used or reproduced in any way without the express consent of MKEC.

**SWS LINES 5 & 6**

PROJECT NO.	2021-000728PPD	
DATE	11/19/2021	
SCALE	1"=20'	
DESIGNED	DRAWN	CHECKED
LM	C-JL	SPE

NO.	REVISION	DATE