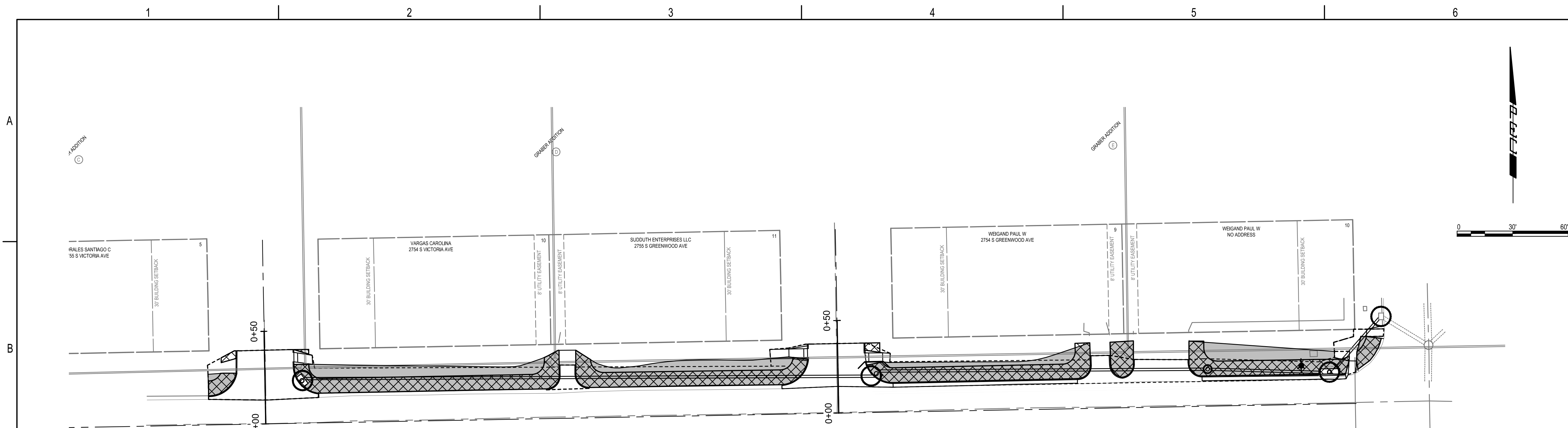


SAVED 1/3/2025 12:59:39 PM BY HUNTER, WILES
 PLOTTED 1/3/2025 2:16:36 PM BY BRADLEY HAYNES
 U:\WICHITA-CIVIL\2023\237042\05\2PPD4_PLANS\030\237042-005-CG101.DWG



GENERAL NOTES




- CONTRACTOR SHALL INSTALL AND MAINTAIN EROSION PROTECTION THROUGHOUT THE ENTIRE PROJECT. THE FOLLOWING QUANTITIES ARE PROVIDED FOR INFORMATION ONLY.

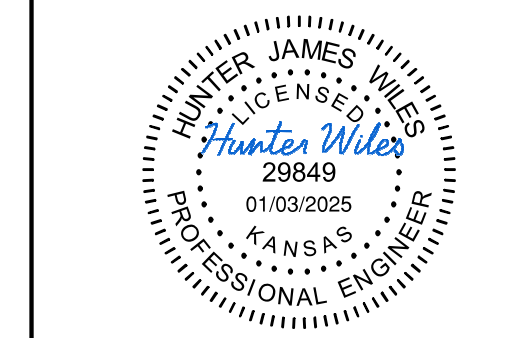
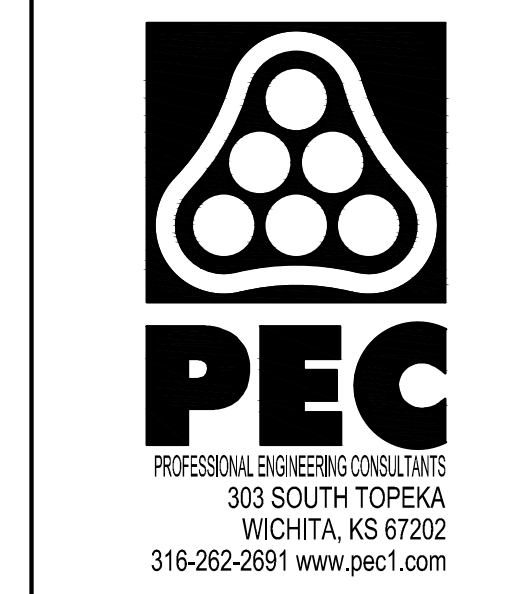
CURB INLET PROTECTION	4	EACH
BACK OF CURB PROTECTION	1988	LF
SOD	0.15	AC
TEMPORARY SEEDING W/ MAT	0.15	AC
- THE EROSION CONTROL DEVICES SHOWN ON THIS SHEET ARE CONSIDERED MINIMUM STANDARDS. WHENEVER SEDIMENT ENTERS THE STREETS, STORM SEWERS, DITCHES, OR PONDS, CONTRACTOR WILL INSTALL ADDITIONAL DEVICES, AS NEEDED, TO CORRECT THE PROBLEM.
- THE EROSION CONTROL DEVICES SHOWN HEREON MUST BE IN PLACE AT ALL TIMES DURING CONSTRUCTION UNTIL SUCH TIME AS THE SITE IS REESTABLISHED WITH PAVING OR GRASS. TEMPORARY OR PERMANENT SEEDING AND MULCH WILL BE INSTALLED WHEN EARTHWORK ACTIVITIES CEASE IN AN AREA FOR 14 DAYS OR MORE.
- ANY MUD INADVERTENTLY TRACKED ONTO ANY STREET SHALL BE CLEANED UP BY THE CONTRACTOR, AT THE END OF EACH DAY'S WORK, OR AS DIRECTED BY THE FIELD ENGINEER.

SODDING NOTES

CONTRACTOR TO INSTALL SOD FOR ALL UNPAVED AREAS DISTURBED BY CONSTRUCTION. ALL COSTS TO BE INCLUDED IN LUMP SUM BID ITEM "SODDING".
 SODDING INSTALLATION TO BE CONTINGENT UPON CURRENT DROUGHT STATUS. CONTRACTOR TO COORDINATE WITH CITY STAFF.

EROSION CONTROL LEGEND

-  PROPOSED CURB INLET PROTECTION
-  PROPOSED BACK OF CURB PROTECTION
-  SOD



**STORMWATER SEWER IMPROVEMENTS
 AT WASSALL AND HYDRALIC**

**CITY OF WICHITA
 SEDGWICK COUNTY, KANSAS
 458-2024-085592**

Issue:		

JOB NO.	237042-005
DATE	JANUARY 2025
PM	KMS
DESIGNED BY	HJW
DRAWN BY	BJH
CHECKED BY	TPA

EROSION CONTROL PLAN