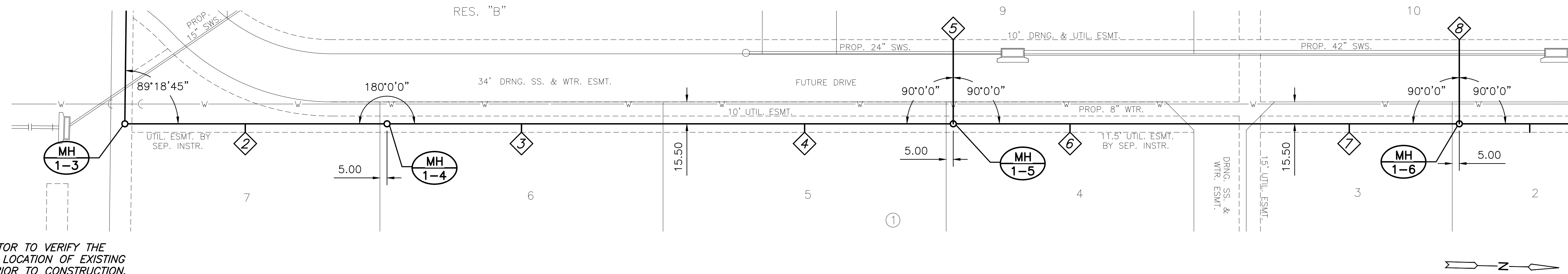


PLOTTED: Thursday, January 30, 2025 @ 02:11PM

J:\PROJECTS\2024\02\10178_KINGS OF FREIGHTWAY\240178_CADD\SHOTS\05_CIVIL\SAN\240178_05_CU102.SDWG

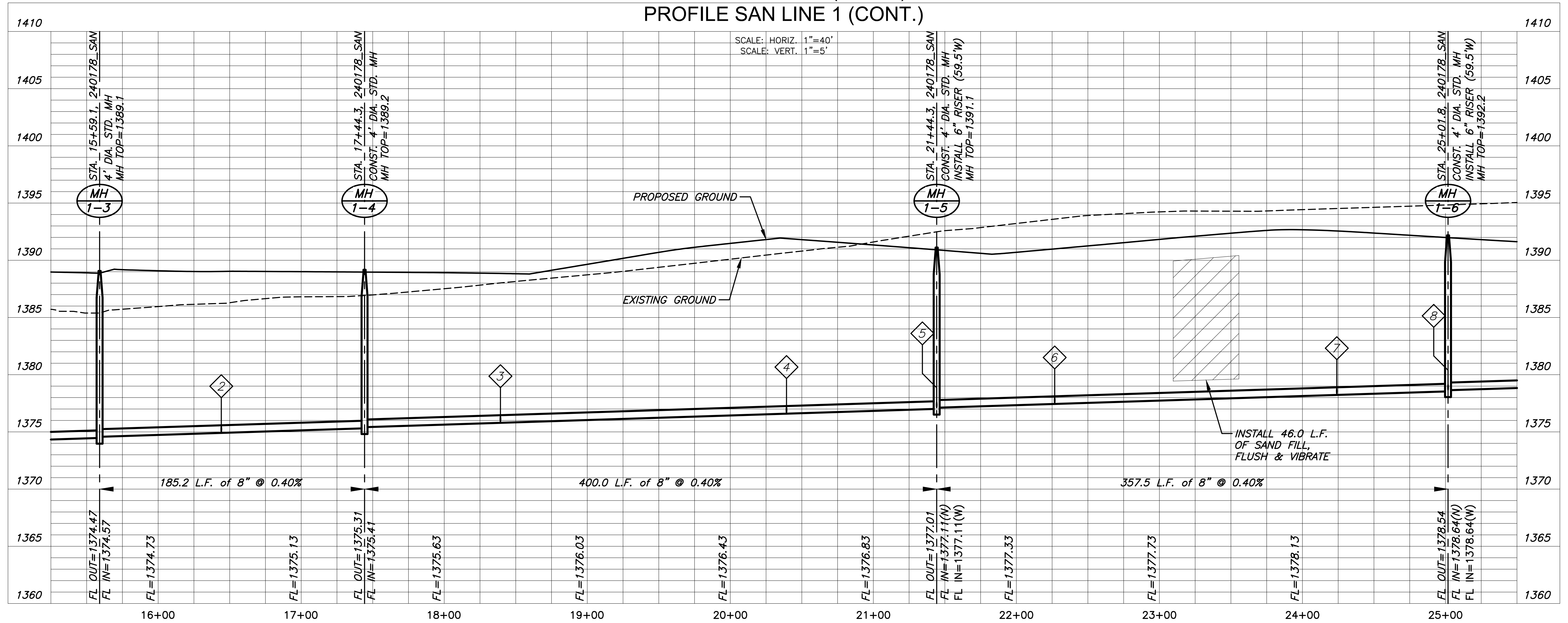
THE KING COAST ADDITION

SEWER SERVICE RISER TABLE							FOR INFORMATION ONLY	
NO.	TYPE	LOCATION			STATION	APPROXIMATE LENGTH		
		LOT NO.	BLOCK NO.	LINE NO.		VERTICAL (FT)	HORIZONTAL (FT)	
2	8X6" SADDLE	7	1	1	16+44/RT.	14'	6'	
3	8X6" SADDLE	6	1	1	18+29/RT.	13'	6'	
4	8X6" SADDLE	5	1	1	20+39/RT.	15'	6'	
5	6" MH CONNECTION	9	1	1	21+44/LT.	13'	59.5'	
6	8X6" SADDLE	4	1	1	22+27/RT.	13'	6'	
7	8X6" SADDLE	3	1	1	24+24/RT.	14'	6'	
8	6" MH CONNECTION	8	1	1	25+02/LT.	13'	59.5'	

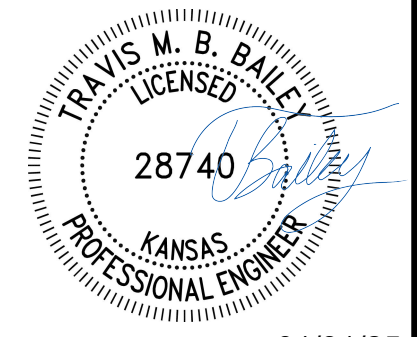


THE KING COAST ADDITION

PLAN SAN LINE 1 (CONT.)
PROFILE SAN LINE 1 (CONT.)



- NOTE:**
- CONTRACTOR TO VERIFY THE DEPTH AND LOCATION OF EXISTING UTILITIES PRIOR TO CONSTRUCTION.
 - CONTRACTOR TO KEEP RISERS #5 AND #8 AS SHALLOW AS POSSIBLE TO MAINTAIN CLEARANCE UNDER FUTURE STORM SEWER PIPING.



01/31/25

LATERAL SANITARY SEWER

THE KINGS COAST ADDITION

WICHITA, KANSAS

LINE 1 (CONT.)		
PROJECT NO.	468-2024-021360	
SCALE	1"=40'	
DRAWN	DESIGNED	CHECKED
BWS	DFL	TMBB
ISSUED FOR CONSTRUCTION	01/31/25	
NO.	REVISION	DATE
SHEET NO. CU102-S		
03 OF 14		