

BENCHMARK:
 BM #1: " " CUT, TOP OF CURB, S. SIDE OF SUNDANCE AS DEDICATED IN SAVANNA AT CASTLE ROCK RANCH 7TH ADDITION, 25± W. OF THE WEST LINE OF THE SE1/4 OF SEC. 12, TWP. 27-S, R-2-E.
 ELEV. = 1347.33 NGVD29

BM #2: 60d NAIL IN HIGH LINE POLE, 30' SOUTH OF S1/4 COR., SEC. 12, TWP. 27-S, R-2-E.
 ELEV. = 1348.58 NGVD29 (PER COUNTY RECORD)

SEWER SERVICE TABLE

NUMBER	TYPE	LOCATION			STATION\ DIRECTION	FOR INFORMATION ONLY	
		LOT NO.	BLOCK NO.	LINE NO.		APPROXIMATE LENGTH 4" PIPE	VERTICAL
7	18" X 4" Tee	15	A	1	19+99/Lt.	17.5'	5.0'
8	18" X 4" Tee	16	A	1	20+79/Lt.	17.5'	5.0'
9	18" X 4" Tee	17	A	1	21+69/Lt.	17.5'	5.0'
10	18" X 4" Tee	18	A	1	22+59/Lt.	17.5'	5.0'
11	4" Stub w/Riser	19	A	1	23+49.4/Lt.	17.5'	5.0'
12	18" X 4" Tee	1	B	1	25+13/Lt.	17.0'	5.0'

NOTE: Vertical Riser Pipe shall be extended to 2' minimum above ground water elevation and 4' maximum below proposed ground elevation.

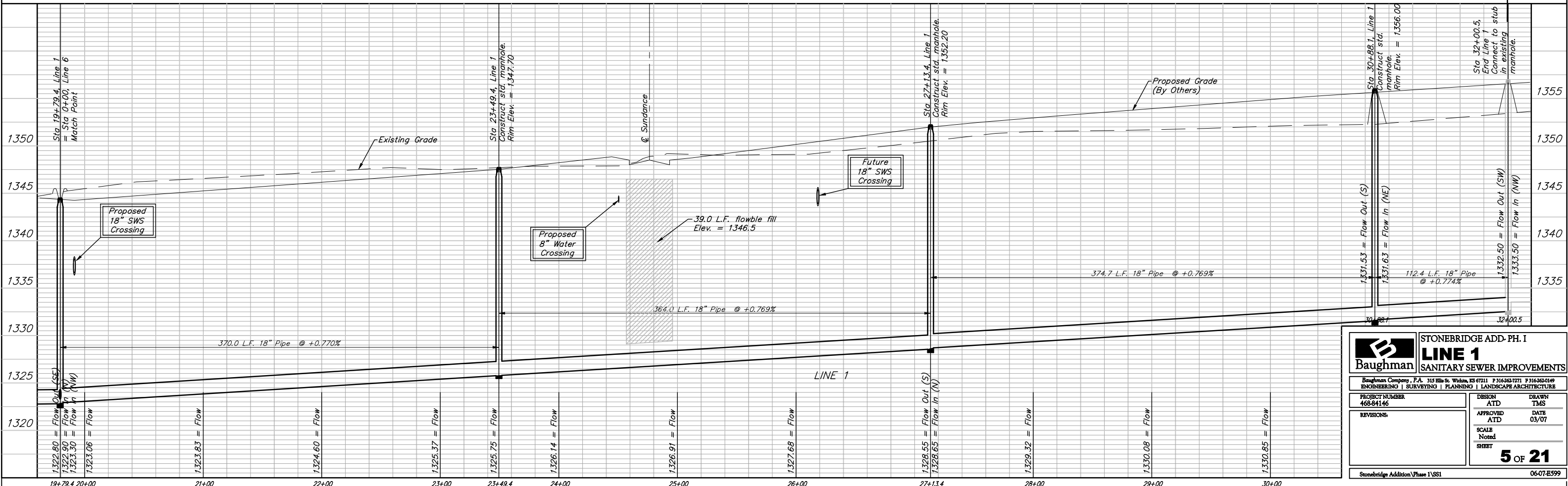
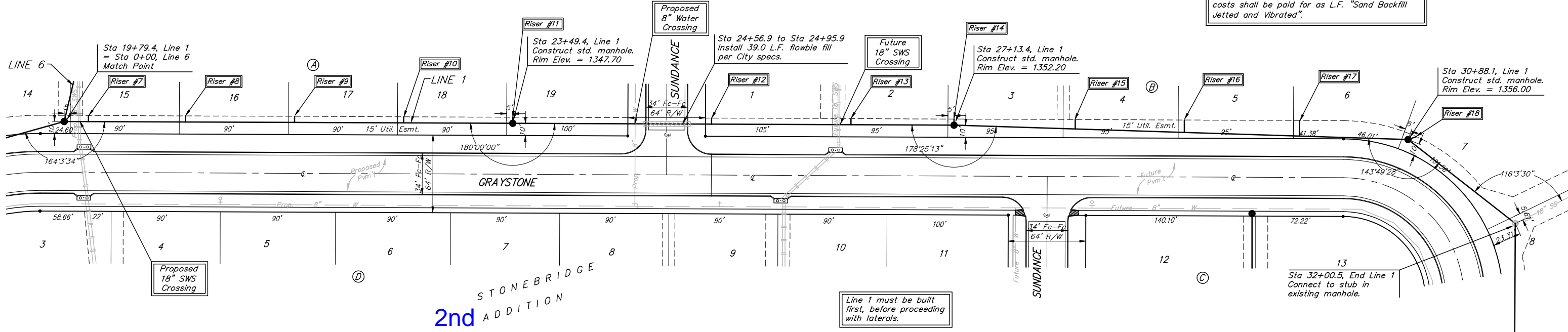
SEWER SERVICE TABLE

NUMBER	TYPE	LOCATION			STATION\ DIRECTION	FOR INFORMATION ONLY	
		LOT NO.	BLOCK NO.	LINE NO.		APPROXIMATE LENGTH 4" PIPE	VERTICAL
13	18" X 4" Tee	2	B	1	26+28/Lt.	18.0'	5.0'
14	4" Stub w/Riser	3	B	1	27+13.4/Lt.	18.5'	5.0'
15	18" X 4" Tee	4	B	1	28+13/Lt.	18.5'	7.0'
16	18" X 4" Tee	5	B	1	29+03/Lt.	18.5'	10.0'
17	18" X 4" Tee	6	B	1	29+98/Lt.	18.5'	13.0'
18	4" Stub w/Riser	7	B	1	30+88.1/Lt.	18.5'	5.0'

NOTE: Vertical Riser Pipe shall be extended to 2' minimum above ground water elevation and 4' maximum below proposed ground elevation.

Scale: 1" = 40' Horizontal
 1" = 5' Vertical
 • = Iron

All trench and manhole excavation areas from Sta. 19+79.4 to Sta. 32+00.5, Line 1 shall be backfilled with sand. The sand backfill shall be within two feet of existing grade and shall be water-jetted and vibrated during backfilling. All costs shall be paid for as L.F. "Sand Backfill Jetted and Vibrated".



STONEBRIDGE ADD-PH. I
LINE 1
SANITARY SEWER IMPROVEMENTS

Baughman
 ENGINEERING | SURVEYING | PLANNING | LANDSCAPE ARCHITECTURE

PROJECT NUMBER: 468-84146
 DESIGN: ATD
 DRAWN: TMS
 APPROVED: ATD
 DATE: 03/07
 SCALE: Noted
 SHEET: 5 OF 21

Stonebridge Addition Phase I SSI 06-07-E599