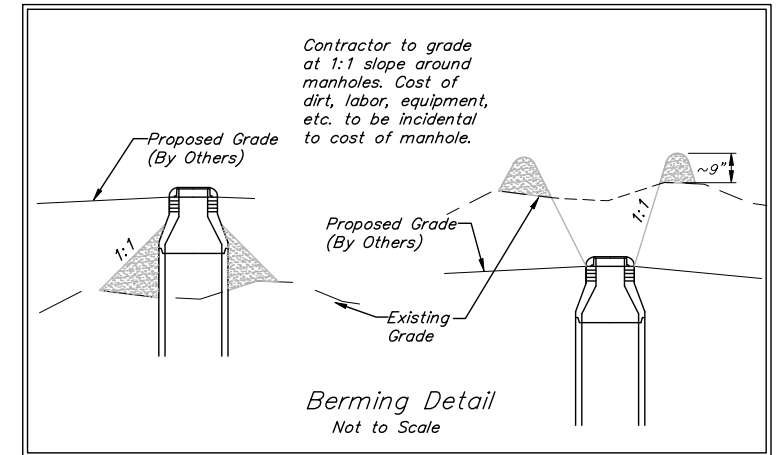
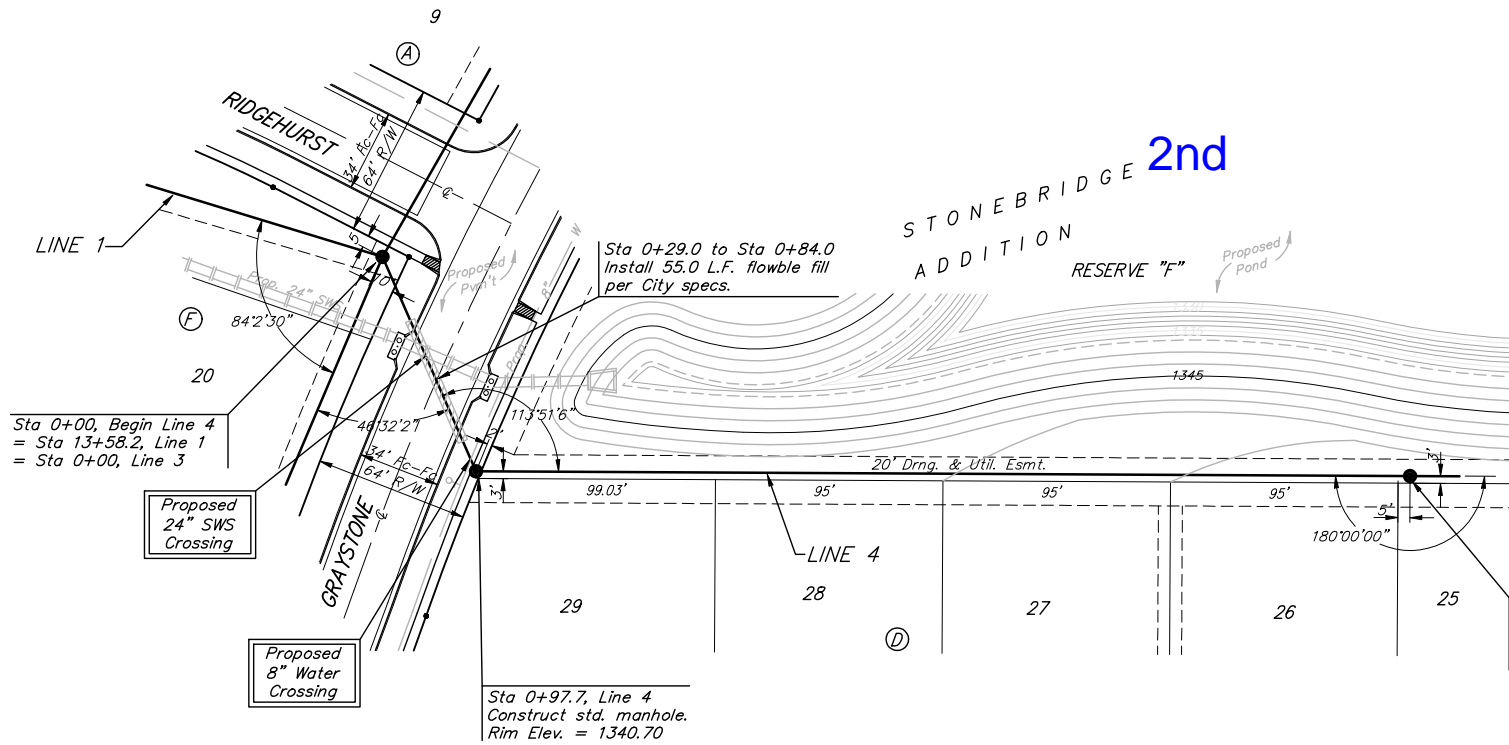


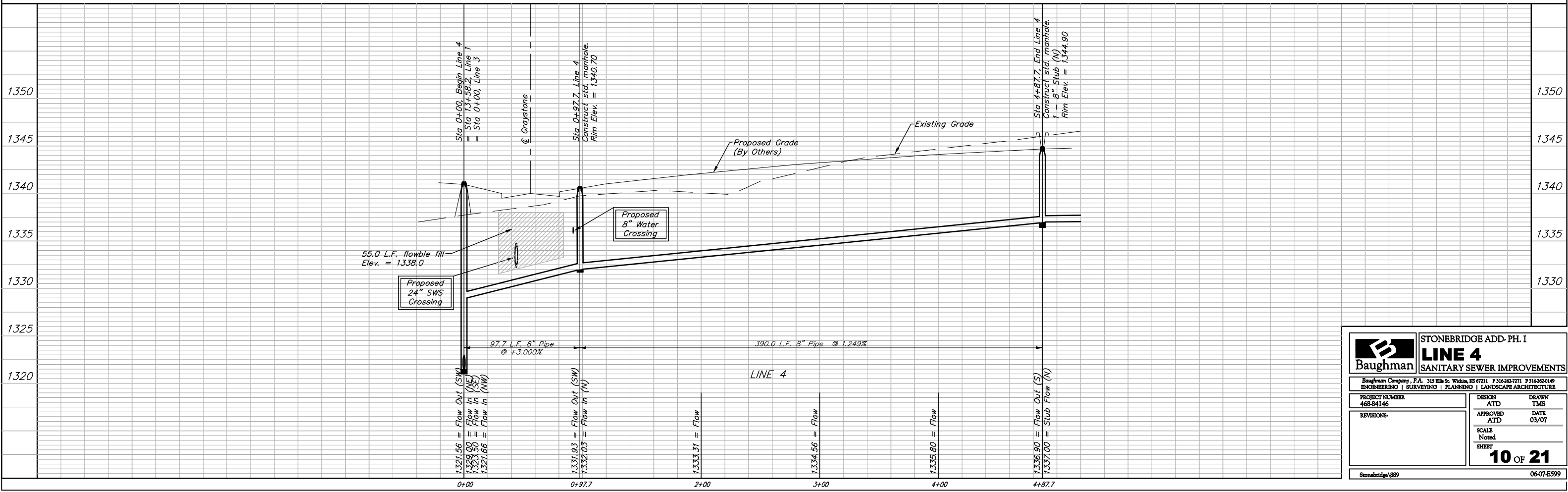
BENCHMARK:
 BM #1: " " CUT, TOP OF CURB, S. SIDE OF SUNDANCE AS DEDICATED IN SAVANNA AT CASTLE ROCK RANCH 7TH ADDITION, 25± W. OF THE WEST LINE OF THE SE1/4 OF SEC. 12, TWP. 27-S, R-2-E.
 ELEV. = 1347.33 NGVD29

BM #2: 60d NAIL IN HIGH LINE POLE, 30' SOUTH OF S1/4 COR., SEC. 12, TWP. 27-S, R-2-E.
 ELEV. = 1348.58 NGVD29 (PER COUNTY RECORD)

Scale: 1" = 40' Horizontal
 1" = 5' Vertical
 • = Iron



Trim trees only as necessary for sanitary sewer construction and only with permission of Developer or Baughman Co. No trees shall be removed with this project. Cost of trimming to be incidental to lump sum bid item "Site Clearing & Restoration".



	STONEBRIDGE ADD-PH. I LINE 4 SANITARY SEWER IMPROVEMENTS	
	<small>Baughman Company, P.A. 315 Ellis St. Wilkes, KS 67111 P 316-262-7771 F 316-262-0149 ENGINEERING SURVEYING PLANNING LANDSCAPE ARCHITECTURE</small>	
<small>PROJECT NUMBER 468-84146</small>	<small>DESIGN ATD</small>	<small>DRAWN TMS</small>
<small>REVISIONS</small>	<small>APPROVED ATD</small>	<small>DATE 03/07</small>
<small>SCALE Noted</small>		<small>SHEET 10 OF 21</small>
<small>Stonebridge\SS9</small>		<small>06-07-E599</small>