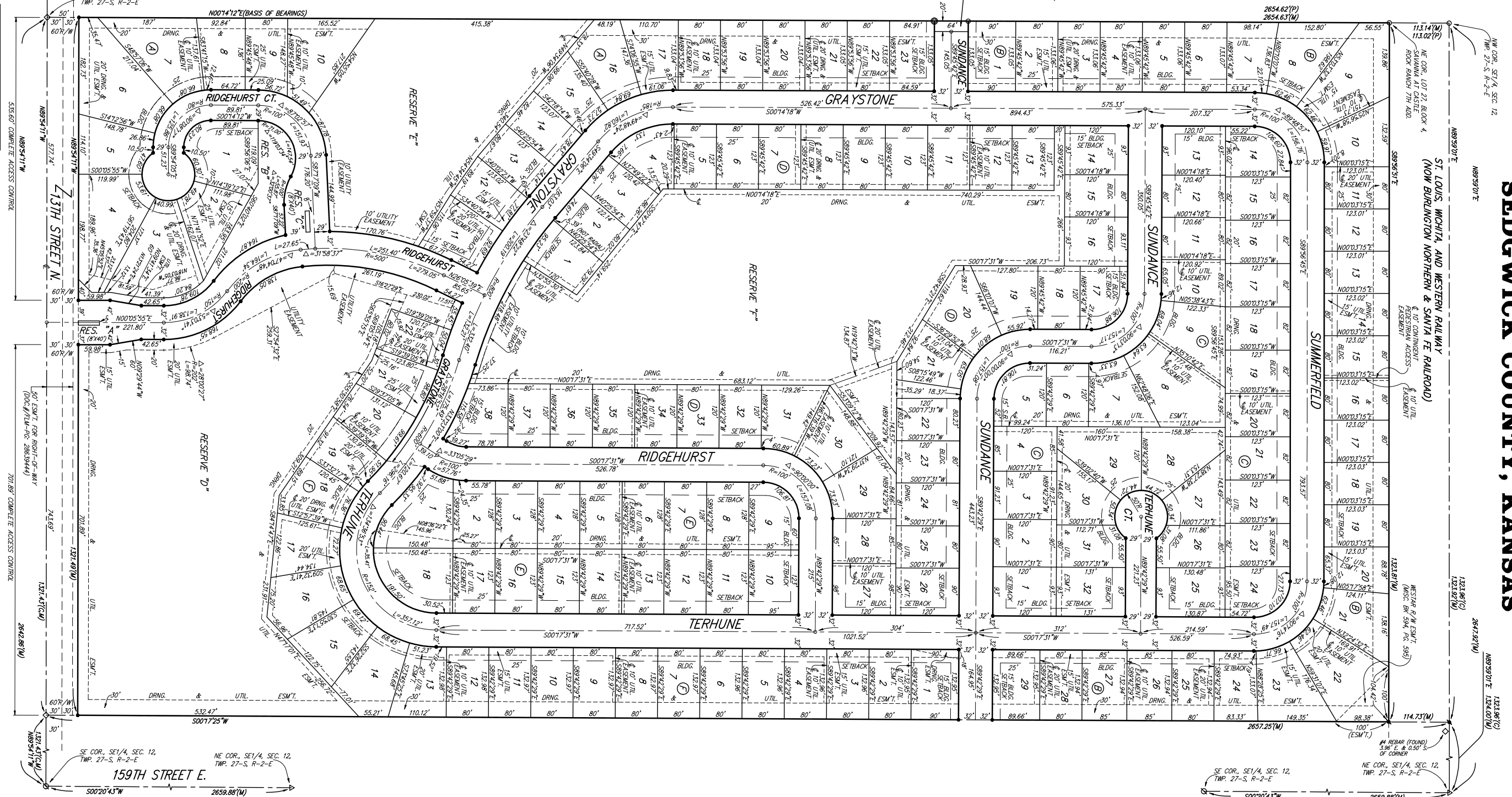


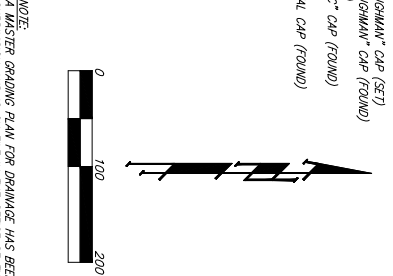
# STONEBRIDGE ADDITION SEDDWICK COUNTY, KANSAS



MINIMUM BUILDING PAD ELEVATIONS FOR LOWEST OPENING TO THE STRUCTURES	LOT	BLOCK	ELEVATION
1-3	A	1337.0	
10-16	A	1339.0	
1-6, 33-38	D	1342.0	
7-23, 29-32	D	1344.0	
14-22	F	1337.0	

- = #4 REBAR W/ TRUSSMAN CAP (SET)
  - = #4 REBAR W/ TRUSSMAN CAP (ROUND)
  - = 3/4" IRON W/ (ROUND)
  - = 3/4" IRON W/ "TEC" CAP (ROUND)
  - = STONE (ROUND)
  - = 3/4" IRON W/ METAL CAP (ROUND)
  - ◇ = #4 REBAR (ROUND)
- (M) = MEASURED  
(P) = PLATTED  
(C) = CALCULATED

BENCHMARK:  
 1. TOP OF CORNER 3, SIZE OF SOUNDANCE AS SHOWN ON PLAT.  
 2. CENTER OF CORNER 3, SIZE OF SOUNDANCE AS SHOWN ON PLAT.  
 774.00' OF SEC. 12, TWP. 27-S, R-2-E.  
 527.00' OF SEC. 12, TWP. 27-S, R-2-E.  
 ELEV = 1342.33 MGD029



NOTE:  
 A MASTER GRADING PLAN FOR DRAINAGE HAS BEEN DEVELOPED FOR THIS SUBDIVISION AND IS ON FILE IN THE OFFICE OF THE COUNTY ENGINEER OR THE ENGINEER FOR THE APPROPRIATE GOVERNING BODY. ALL DRAINAGE FACILITIES INDICATED ON THIS PLAT, OR RESERVES SHALL REMAIN AS ESTABLISHED UNLESS OTHERWISE NOTED.

of \_\_\_\_\_ day  
 Entered on transfer record this \_\_\_\_\_ day  
 \_\_\_\_\_ County Clerk  
 \_\_\_\_\_ Dan Brace  
 \_\_\_\_\_ Bill Meek  
 \_\_\_\_\_ Register of Deeds  
 \_\_\_\_\_ Deputy

State of Kansas) SS We, Baughman Company, P.A., Surveyors Sedgwick County, Kansas do hereby certify that we have surveyed and plotted "STONEBRIDGE ADDITION", Sedgwick County, Kansas and that the accompanying plat is a true and correct exhibit of the property surveyed as described as that part of the W/2 of the SE1/4 of Sec. 12, Twp. 27-S, R-2-E of the 6th P.M., Sedgwick County, Kansas lying south of the southerly right-of-way of the St. Louis, Wichita and Western Railway, subject to road rights-of-way of record.

Existing public easements and dedications being vacated by virtue of K.S.A. 12-512(d).  
 Baughman Company, P.A. \_\_\_\_\_, Surveyor

Know all men by these presents that we, the undersigned, have caused the land in the surveyors certificate to be plotted into Lots, Blocks, Reserves and Streets to be known as "STONEBRIDGE ADDITION", Sedgwick County, Kansas. The utility easements are hereby granted as indicated for the construction and maintenance of all public utilities. The drainage and utility easements are hereby granted as indicated for drainage purposes and for the construction and maintenance of all public utilities. The drainage easements are hereby granted as indicated for drainage purposes. The contingent pedestrian access easement is hereby granted for pedestrian access to and from the Burlington Northern and Santa Fe Railroad right-of-way, contingent upon said railroad right-of-way being railyanked and the construction of public improvements that allow public access within said railroad right-of-way. Fences shall be allowed within this easement until such time as the Burlington Northern and Santa Fe Railroad right-of-way is railyanked and the construction of public improvements within said railroad right-of-way has occurred. The streets are hereby dedicated to and for the use of the public. Reserves "A" and "C" are hereby reserved for entry monuments, landscaping, open space, drainage purposes, and utilities. The public shall not bear the cost of any repair or replacement of improvements within said Reserves "A" and "C" adversely affected by street construction, repair, or maintenance. Reserve "B" is hereby reserved for entry monuments, landscaping, open space, beams, drainage purposes, and utilities. Reserves "D", and "E" are hereby reserved for lakes, landscaping, open space, beams, sidewalks, drainage purposes, floodway, and utilities as confined to easements. No buildings shall be constructed or placed on or within said floodway, nor shall any fill, change of grade, creation of channel, or any other work be carried on without permission of the Engineer for the appropriate governing body. Reserve "F" is hereby reserved for lakes, landscaping, open space, beams, sidewalk parking, a swimming pool and accessories, recreational activities, gazebo, drainage purposes, and utilities as confined to easements. Reserve "G", "B", "D", "E", and "F" shall be owned and maintained by the homeowners' association for the addition. Reserve "G" shall be owned and maintained by the Stonebridge Homeowners Association and/or the Shanna of Cas Rock Ranch Homeowners Association. Access controls shall be as depicted on the face of the plat and are hereby granted to the appropriate governing body. The Minimum Building Pad Elevations for the lowest opening to the structures shall be as indicated on the face of the plat.

FLKS Land Development, LLC  
 a Kansas limited liability company  
 \_\_\_\_\_, Member  
 Steven R. Barrett

State of Kansas) SS The foregoing instrument acknowledged before me, this \_\_\_\_\_ day of \_\_\_\_\_, by Steven R. Barrett, Member of FLKS Land Development, LLC, a Kansas limited liability company on behalf of the limited liability company.

My App't. Exp: \_\_\_\_\_, Notary Public

We the undersigned holders of a mortgage on the above described property, do hereby consent to this plat of "STONEBRIDGE ADDITION", Sedgwick County, Kansas.  
 Commerce Bank, N.A. \_\_\_\_\_ (TIN)

State of Kansas) SS The foregoing instrument acknowledged before me, this \_\_\_\_\_ day of \_\_\_\_\_, by \_\_\_\_\_ of \_\_\_\_\_ of Commerce Bank, N.A., on behalf of the bank.  
 \_\_\_\_\_ (TIN)

My App't. Exp: \_\_\_\_\_, Notary Public

This plat of "STONEBRIDGE ADDITION", Sedgwick County, Kansas has been submitted to and approved by the Wichita-Sedgwick County Metropolitan Area Planning Commission, Wichita, Kansas.  
 Dated this \_\_\_\_\_ day of \_\_\_\_\_, 2005  
 Wichita-Sedgwick County Metropolitan Area Planning Commission

\_\_\_\_\_ Chair  
 Ronald L. Marnell  
 \_\_\_\_\_ Secretary  
 John L. Schiegel  
 \_\_\_\_\_ Mayor  
 Carlos Moyano  
 \_\_\_\_\_ City Clerk  
 Karen Schofield  
 \_\_\_\_\_ Chairman  
 Ben Sciorino  
 \_\_\_\_\_ County Clerk  
 Dan Brace  
 \_\_\_\_\_

This plat approved and all dedications shown hereon accepted by the City Council of the City of Wichita, Kansas, this \_\_\_\_\_ day of \_\_\_\_\_, 2005.

This plat approved and all dedications shown hereon accepted by the Board of Commissioners of Sedgwick County, Kansas, this \_\_\_\_\_ day of \_\_\_\_\_, 2005.

ATTEST: \_\_\_\_\_, County Clerk  
 Dan Brace  
 Reviewed in accordance with K.S.A. 58-2005

Tricia L. Robelia, L.S. #1246  
 Deputy County Surveyor  
 Sedgwick County, Kansas