

J:\PROJECTS\2022\12\10\10591_JGR_REED COMMERCIAL TRACT D LOT 100 210591 CAOSHS\1505 CIVIL\SWS - PPD\210591_PPD_COVER SHEET.DWG PLOTTED: Thursday, February 03, 2022 @ 01:10PM

GENERAL NOTES

- THE CONTRACTOR SHALL COMPLY WITH ALL APPLICABLE SAFETY REGULATIONS. ALL CONSTRUCTION SHALL BE COMPLETED FOLLOWING CURRENT CITY STANDARD SPECIFICATIONS AND SPECIAL PROVISIONS.
- CONTRACTOR WILL BE REQUIRED TO PROVIDE NOTICE TO UTILITY COMPANIES A MINIMUM OF SEVENTY-TWO (72) HOURS PRIOR TO ANY EXCAVATION, AS FOLLOWS:
KANSAS ONE-CALL 687-2470
THE CONTRACTOR MUST NOTIFY THE FOLLOWING IN CASE OF AN EMERGENCY:
AT&T 1-316-246-8464
BLACK HILLS ENERGY (GAS) 1-800-694-8989
CITY OF WICHITA WATER & SEWER 1-316-219-8921
CITY OF WICHITA STORMWATER 1-316-268-4090
CITY OF WICHITA TRAFFIC 1-316-268-4034
COX COMMUNICATIONS 1-888-249-3530
KANSAS GAS SERVICE 1-888-482-4950
EVERGY 1-800-544-4857
- UTILITY SERVICE LINES, POLES, ETC. ARE TO BE ADJUSTED AS NECESSARY BY OTHERS PRIOR TO CONSTRUCTION UNLESS THE PLANS SPECIFICALLY CALL FOR THEIR ADJUSTMENT BY THE CONTRACTOR OR UNLESS THE PLANS SPECIFICALLY IDENTIFY A UTILITY TO BE ADJUSTED BY ITS OWNER DURING CONSTRUCTION. EXISTING UTILITIES AND THEIR LOCATION, AS SHOWN ON THE PLANS, REPRESENT THE BEST INFORMATION OBTAINABLE FOR DESIGN. THE CONTRACTOR WILL BE REQUIRED TO WORK AROUND EXISTING UTILITIES WITHIN THE RIGHT-OF-WAY WHICH DO NOT CONFLICT WITH PROPOSED CONSTRUCTION.
- RUBBLE FROM THE REMOVAL OF MISCELLANEOUS STRUCTURES AND EXCESS EXCAVATION WHICH IS TO BE WASTED SHALL BE DISPOSED OF ON SITES TO BE PROVIDED BY THE CONTRACTOR. THESE SITES SHALL BE APPROVED BY THE ENGINEER AS TO SUITABILITY, APPEARANCE AND SITE LOCATION. LOCATIONS, IN THE OPINION OF THE ENGINEER, THAT WILL LEAVE AN UNSIGHTLY APPEARANCE WILL NOT BE APPROVED. ALL DISPOSAL SITES MUST BE APPROVED BY THE KANSAS DEPARTMENT OF HEALTH AND ENVIRONMENT. MATERIAL EITHER STOCKPILED OR DISPOSED OF IN A FLOOD PLAIN WILL REQUIRE A KANSAS STATE BOARD OF AGRICULTURE PERMIT. ANY MATERIAL DUMPED IN WATERS OF THE UNITED STATES OR WETLANDS IS SUBJECT TO U.S. CORPS OF ENGINEERS PERMITTING REGULATIONS. ANY MATERIAL BURIED OR STOCKPILED BEYOND APPROVED CONSTRUCTION LIMITS WOULD REQUIRE ADDITIONAL ARCHAEOLOGICAL INVESTIGATIONS UNLESS BURIED IN A PREVIOUSLY APPROVED BORROW LOCATION.
- TREES AND SHRUBS IN PUBLIC RIGHT-OF-WAY WHICH ARE IN DIRECT CONFLICT WITH PROPOSED NEW CONSTRUCTION SHALL BE REMOVED BY THE CONTRACTOR WITH THE CITY ENGINEER'S APPROVAL. TREES AND SHRUBS WHICH ARE NOT IN DIRECT CONFLICT WITH PROPOSED NEW CONSTRUCTION SHALL BE SAVED AND PROTECTED FROM DAMAGE.
- THE CONTRACTOR SHALL GIVE ALL PROPERTY OWNERS AND/OR TENANTS OF DEVELOPED PROPERTY ABUTTING THE CONSTRUCTION OF THIS PROJECT A MINIMUM OF TEN (10) DAYS NOTICE PRIOR TO START OF CONSTRUCTION.
- THE CONTRACTOR SHALL BE RESPONSIBLE FOR PRESERVING PROPERTY IRONS. THE CONTRACTOR WILL BE REQUIRED TO RE-ESTABLISH ANY PROPERTY IRONS WHICH ARE DAMAGED OR DESTROYED BY HIS CONSTRUCTION OPERATIONS. SUCH IRONS SHALL BE RE-ESTABLISHED BY A LICENSED LAND SURVEYOR IN ACCORDANCE WITH STATE LAWS.
- THE ENGINEERING DIVISION SHALL FIELD LOCATE WATER VALVES ONE TIME DURING CONSTRUCTION WHEN REQUESTED BY THE CONTRACTOR. IT SHALL BE THE CONTRACTOR'S RESPONSIBILITY TO PRESERVE SUCH FIELD LOCATIONS DURING THE CONSTRUCTION PROCESS. WATER VALVES, VALVE BOXES OR FIRE HYDRANTS DAMAGED DURING CONSTRUCTION SHALL BE REPAIRED BY CONTRACTOR AT HIS OWN EXPENSE. VALVE BOXES AND WATER METERS WITHIN THE PROJECT LIMITS SHALL BE ADJUSTED TO MATCH FIELD GRADES BY THE CONTRACTOR.
- THE CONTRACTOR SHALL NOTIFY THE INSPECTING ENGINEER AND TOM MASON AT 316-268-4574 WITH THE CITY OF WICHITA WITH THE ANTICIPATED START DATE AND NOTIFY THEM OF PROJECT COMPLETION. STAKING AND INSPECTION FOR THIS PROJECT WILL BE THE RESPONSIBILITY OF THE CONTRACTOR.
- IF TRAFFIC WILL BE IMPACTED BY CONSTRUCTION, A TRAFFIC CONTROL PLAN MUST BE SUBMITTED AND APPROVED BY THE CITY TRAFFIC ENGINEER AT traffic@wichita.gov BEFORE CONSTRUCTION CAN BEGIN. THE CONTRACTOR SHALL BE RESPONSIBLE FOR ALL TRAFFIC CONTROL MEASURES TO FACILITATE CONSTRUCTION. ALL CONSTRUCTION ZONE MARKINGS AND SIGNAGE SHALL CONFORM TO THE LATEST VERSION OF THE MANUAL ON UNIFORM TRAFFIC CONTROL DEVICES (MUTCD) AS PUBLISHED BY THE US DEPT. OF TRANSPORTATION, FEDERAL HIGHWAY ADMINISTRATION. ALL COSTS ASSOCIATED WITH CONSTRUCTION MARKINGS AND SIGNAGE SHALL BE THE CONTRACTOR'S RESPONSIBILITY.
- ALL ELEVATIONS SHOWN ARE NAVD 88.
- ALL AREAS DISTURBED DURING CONSTRUCTION THAT WILL NOT BE UNDER PROPOSED PAVEMENT SHALL BE RESTORED TO MATCH EXISTING CONDITIONS.
- ANY SIDEWALK, DRIVE APPROACH, OR STREET PAVEMENT REMOVED TO CONSTRUCT PROJECT MUST HAVE A PAVEMENT CUT PERMIT AND BE REPLACED BY THE CITY CONTRACTOR. PERMITS CAN BE OBTAINED BY CALLING 316-268-4501 OR 316-268-4480.
- CITY MAINTENANCE OF STORM SEWER ENDS AT THE LAST STRUCTURE IN THE EASEMENT OR RIGHT-OF-WAY.
- A PORTION OF EXCESS EXCAVATED MATERIAL SHALL BE MOUNDED AROUND MANHOLES WHICH EXTEND MORE THAN ONE (1) FOOT ABOVE THE EXISTING GROUND. SUCH MOUND SHALL BE CONSTRUCTED WITH NEW DEVELOPMENT A SIX (6) FOOT DIAMETER FLAT TOP WITH 4 TO 1 SIDE SLOPES DOWN TO THE ORIGINAL GROUND. THE ELEVATION OF THE FLAT TOP OF THE MOUND SHALL BE 0.4 FOOT BELOW THE TOP OF THE MANHOLE.
- GEOTECHNICAL REPORT AVAILABLE UPON REQUEST.
- CONTRACTOR SHALL LIMIT THE EXTENT OF TRENCH OPEN OVERNIGHT AND WEEKENDS TO LESS THAN 50 FEET.
- THE INSPECTING FIRM SHALL SUBMIT TO THE CITY STORMWATER MAINTENANCE DIVISION A DIGITAL COPY OF THE CITY INSPECTION REPORTS FOLLOWING CONSTRUCTION. THE DIGITAL FILE FORMATION SHALL BE COMPATIBLE WITH THE CITY INPUT TEMPLATE. A COPY OF THE TEMPLATE IS AVAILABLE UPON REQUEST AT 316-268-4090.
- THE CONTRACTOR SHALL PROTECT FROM DAMAGE AND SUPPORT EXISTING UTILITIES THROUGH CONSTRUCTION AS APPROVED BY THE UTILITY OWNER AND THE ENGINEER AT THE CONTRACTOR'S EXPENSE.
- EXISTING UTILITIES AND THEIR LOCATION, AS SHOWN ON THE PLANS REPRESENT THE BEST INFORMATION OBTAINABLE FOR DESIGN. LOCATION INFORMATION HAS BEEN OBTAINED FROM THE VARIOUS COMPANIES AND IS EITHER FROM COMPANY UTILITY DRAWINGS OR COMPANY PROVIDED FIELD LOCATIONS. THE PLAN LOCATIONS SHOWN ARE NOT GUARANTEED. ADDITIONAL EXISTING UTILITIES MAY ALSO BE ENCOUNTERED.
- CONTRACTOR SHALL PROVIDE POSITIVE DRAINAGE AWAY FROM ALL MANHOLE COVERS.
- ALL CONSTRUCTION EQUIPMENT, INCLUDING VEHICLES, MATERIALS, AND DEBRIS, SHALL BE STORED OUTSIDE OF THE CLEAR ZONE. WHERE THIS CANNOT BE ACHIEVED THE CONTRACTOR SHALL PLACE APPROPRIATE SIGNS, OBJECT IDENTIFIERS, AND/OR BARRICADES IN COMPLIANCE WITH MUTCD.
- EXCEPT WHEN REQUIRED FOR SAFETY, TRAFFIC CONTROL SHALL NOT BLOCK ANY LANES OR SIDEWALKS WHEN WORK IS NOT BEING PERFORMED.
- DEVELOPER FOR THIS PROJECT IS:
AMBER WAVES DIVING & AQUATIC CENTER, LLC
307 S GREENWICH ROAD
WICHITA, KS 67207
316-775-6688

PRIVATE STORM WATER SEWER

TO SERVE

AMBER WAVES

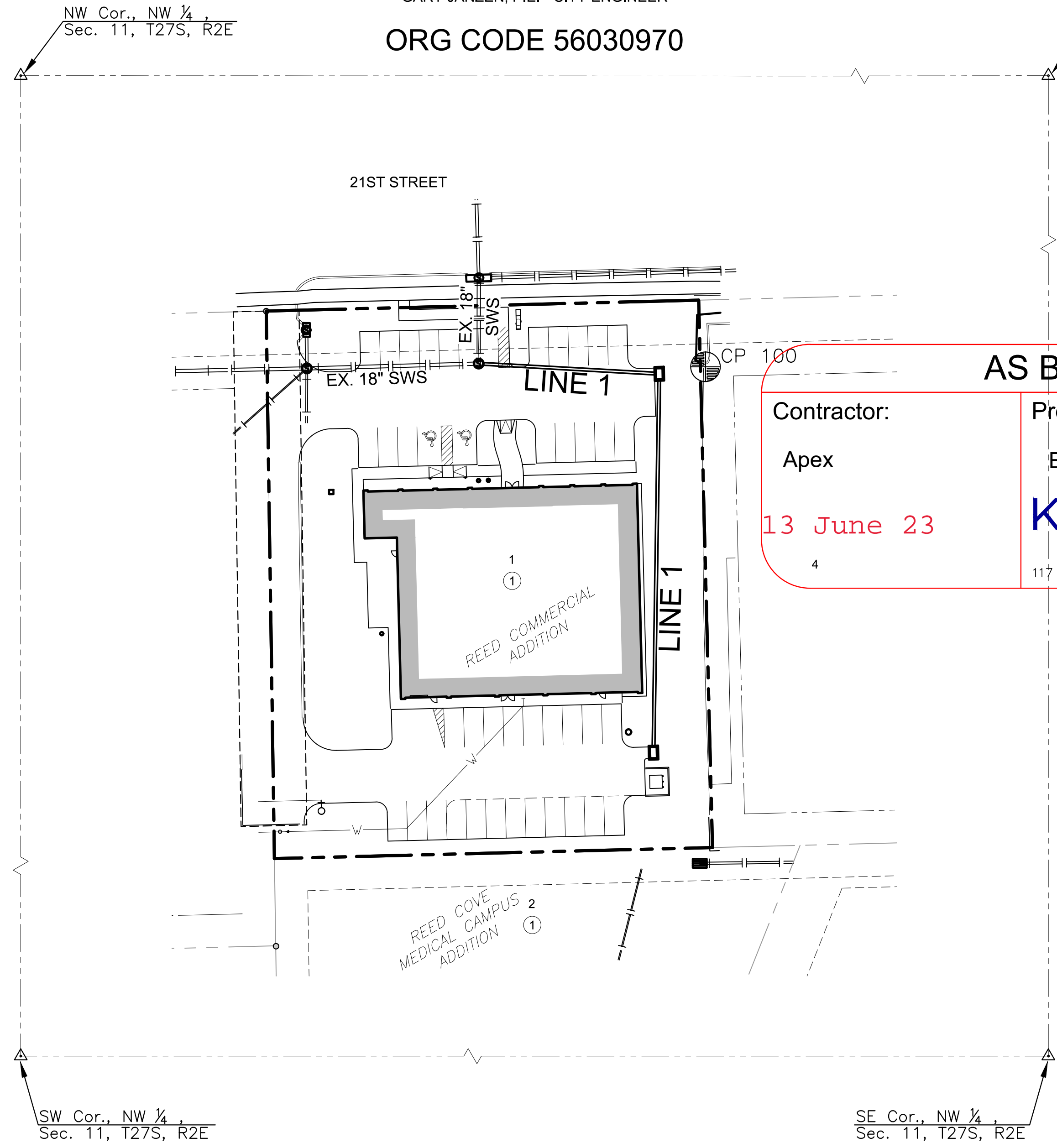
12959 E 21st St N

PART OF LOT 1, BLOCK 1, REED COMMERCIAL ADDITION

PROJECT NO. 2022-000732PPD

THE CITY OF WICHITA, KANSAS
GARY JANZEN, P.E. - CITY ENGINEER

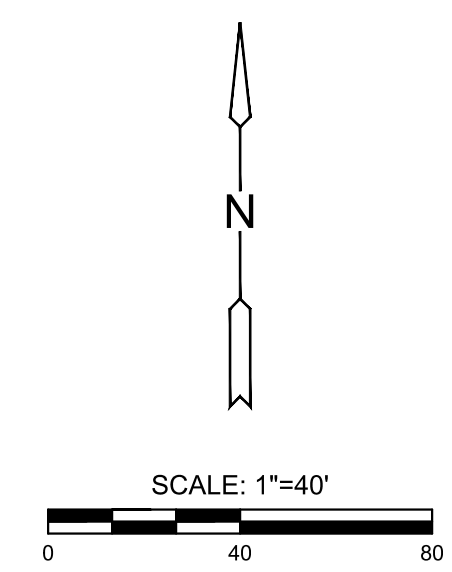
ORG CODE 56030970



CP 100
N: 1699794.82 E: 1692241.92 EL: 1368.05
Chiseled "X" on the south end of the curb ±30 feet south of the northeast corner of the subject property

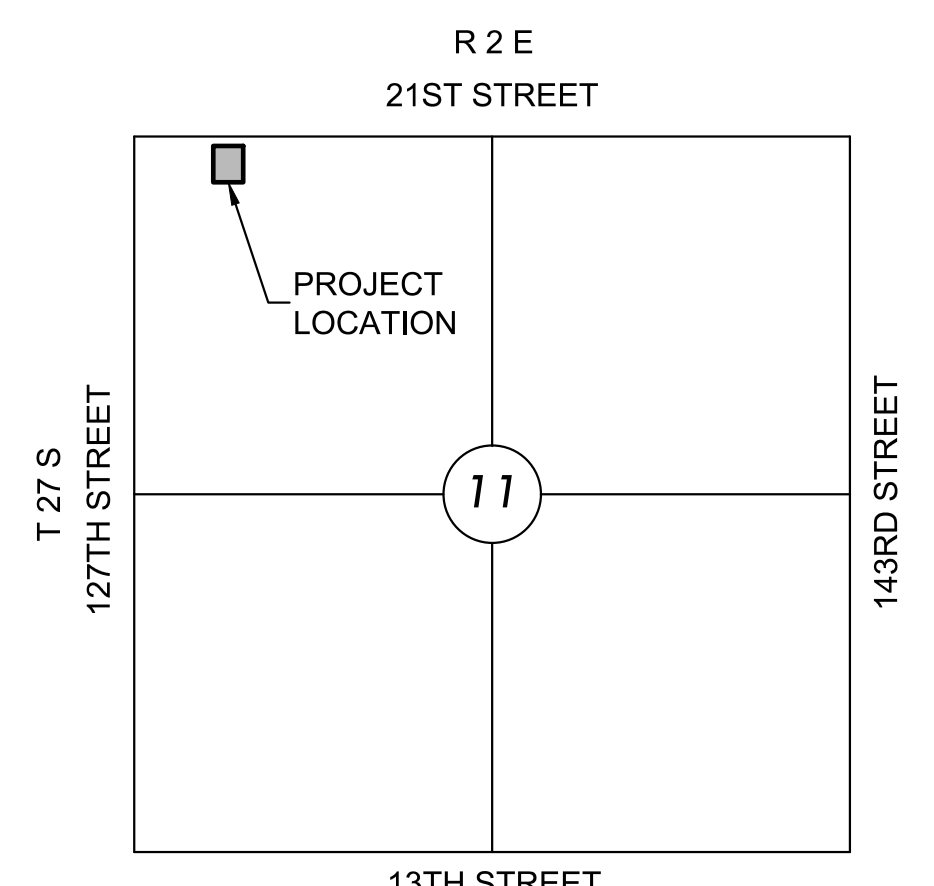
Horizontal and Vertical Datum:
Horizontal Datum: Kansas Coordinate System 1983
South Zone, (Horizontal coordinates modified to ground using a scale factor of 1.000120014)
Vertical Datum: NAVD 88

Existing Utilities:
The underground utilities shown hereon were marked in the field by the utility owners in response to Kansas One Call Ticket Number: 21486248. The surveyor makes no guarantee that the underground utilities shown comprise all such utilities in the area, either in service or abandoned. The surveyor further does not warrant that the underground utilities shown are in the exact location indicated although he does certify that they are located as accurately as possible from information available. The surveyor has not physically located the underground utilities.



PROPOSED IMPERVIOUS = ***
PROPOSED PERVIOUS = ***
WQv = N / A
CPv = N / A

***SEE ERU PLAN FOR PROPOSED IMPERVIOUS AND PROPOSED PERVIOUS AREAS.



VICINITY MAP

No Scale

LEGEND

- EXISTING SWS
- PROPOSED SWS

AS BUILTS

Contractor:
Apex
13 June 23

Project Inspector:
Eric Miner
KEMILLER
ENGINEERING PA
117 E. Lewis, Wichita, KS 67202 (316)264-0242

INDEX TO DRAWINGS

SHEET NO.	DESCRIPTION
01	TITLE SHEET
02-03	CITY STORM WATER DETAILS
04	DRAINAGE AREA MAP
05	SWS LINE 1
06-10	CITY BMP DETAILS

Stormwater Certification:
New Development
Stormwater Permit # SW02022-0008
NOI Permit # S-AR94-1732

These construction plans were prepared in accordance with the current Stormwater management Regulations as set forth in the City of Wichita's Stormwater Management Ordinance 16.32 and the policies/guidelines presented in the Wichita/Sedgwick County Stormwater Manual.

Site Area (Acres) = 1.14 AC
Disturbed Area (Acres) = 1.1 AC
Water Quality Treatment: OFFSITE BMP PROGRAM
Downstream Channel Protection: N/A
Detention: Accounted for in Reed's Cove Addition Pond
The BMP used for this development is OFFSITE BMP PROGRAM

APPROVED AS NOTED
BY WICHITA PUBLIC WORKS ENGINEERING
AND STORMWATER DIVISION

Engineering Approved by Ben Ferguson 01/28/2022
Storm Water Approved by Joe Hickle 01/28/2022

NOTE TO CONTRACTORS

Inspection and testing for this project is to be provided by a Licensed Consulting Engineering Firm under contract with the Owner/Developer. Said inspection to be in accordance with the City of Wichita standard construction engineering practices and certified by a Licensed Professional Engineer in the state of Kansas. No work shall be performed by the Contractor without such inspection, nor shall any work be commenced without written authorization by the City Engineer. All Construction and Materials shall comply with the current City of Wichita Specifications and Standards and Special Provisions. (on file and available at Wichita.gov).

An approved copy of these plans signed by City staff are required on-site.

NOTE: CONTRACTOR TO VERIFY DEPTH AND LOCATION OF EXISTING UTILITIES PRIOR TO CONSTRUCTION.

NO.	REVISION	DATE

SHEET NO. **01 OF 10**



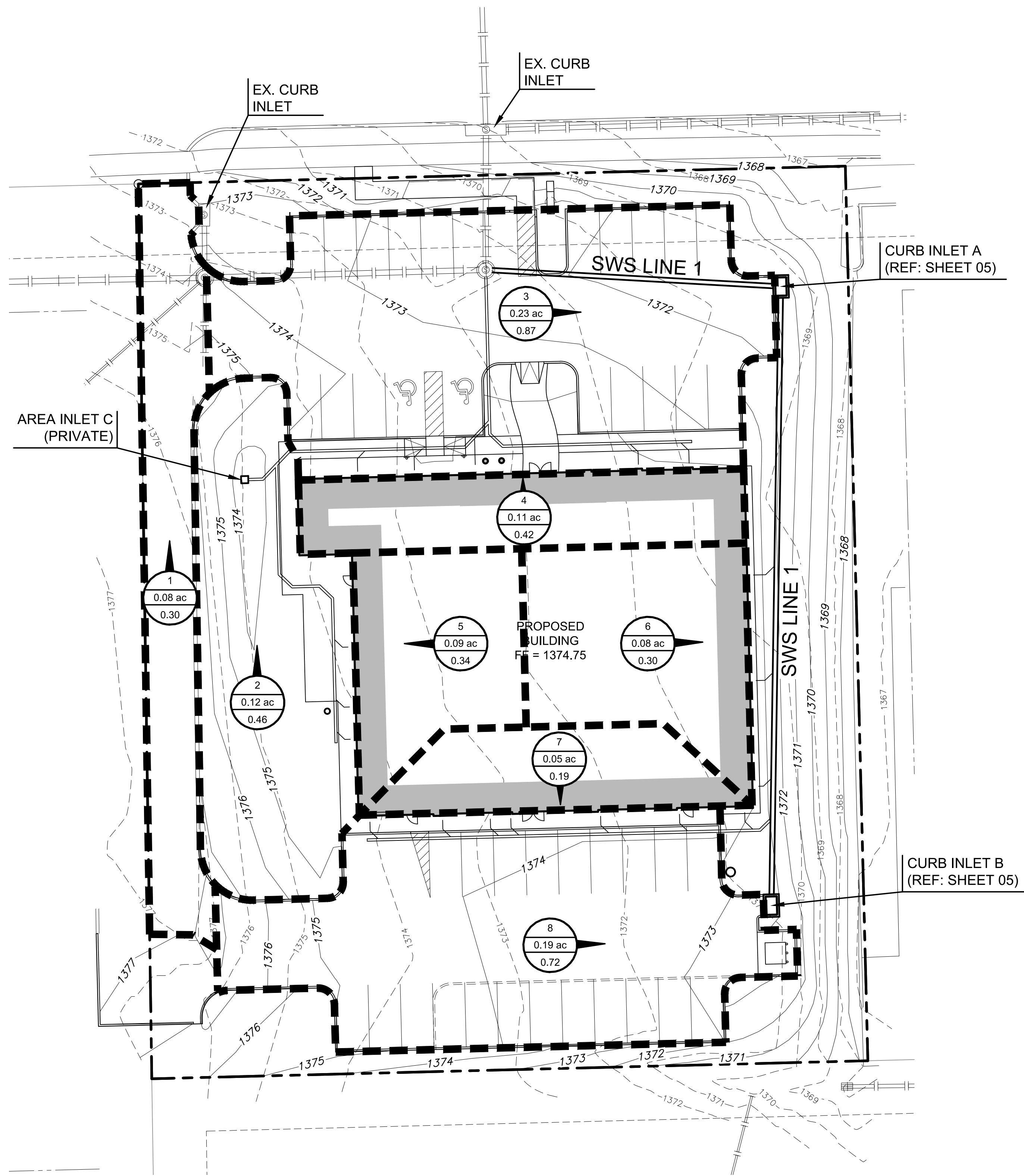
PRIVATE STORM WATER SEWER PLANS FOR
AMBER WAVES
WICHITA, KANSAS

©2022 MKEC Engineering All Rights Reserved
These drawings and their contents, including, but not limited to, all concepts, designs, & ideas are the exclusive property of MKEC Engineering (MKEC), and may not be used or reproduced in any way without the express consent of MKEC.

TITLE SHEET

PROJECT NO.	2022-000732PPD	
DATE	JAN 2022	
SCALE	1"=40'	
DESIGNED	DRAWN	CHECKED
KPG	KPG	KPG

J:\PROJECTS\2021\101010591_JGR_REED COMMERCIAL TRACT D LOT 100 210591 CAD\SHITS\05 CIVIL\SWS - PPD\21891_PPD_DMAP.DWG
 PLOTTED: Thursday, February 03, 2022 @ 01:10PM



- NOTES**
- REFER TO "REED COMMERCIAL ADDITION" DRAINAGE REPORT EXISTING AND POST-DEVELOPED RUNOFF CONDITIONS. THE PROPOSED DEVELOPMENT COMPLIES WITH THE DRAINAGE REPORT.
 - THE RATIONAL METHOD WAS USED TO COMPUTE THE PEAK DISCHARGES FOR THE DEVELOPED CONDITIONS.
 - COMPUTED PEAK FLOWS WERE USED TO SIZE THE PROPOSED ONSITE STORM SEWER INFRASTRUCTURE.
 - ONSITE STORM SEWER HAS BEEN SIZED TO THE 10-YEAR STORM EVENT PER THE CITY OF WICHITA STORMWATER MANUAL.
 - 10-yr RUNOFF COEFFICIENT "C": 0.79
 - PER "REED COMMERCIAL ADDITION" DRAINAGE REPORT, APPENDIX C.
 - INLET TIME OF CONCENTRATION: 15 min
 - 10-yr RAINFALL INTENSITY: 4.81 in/hr
 - PER CITY OF WICHITA STORMWATER DRAINAGE CRITERIA AND DESIGN MANUAL, VOLUME 2, APPENDIX B.
 - THIS SITE IS INCLUDED WITHIN THE WATERSHED OF THE REED'S COVE ADDITION DETENTION POND. ONSITE DETENTION IS NOT REQUIRED.

LEGEND

- 1 DRAINAGE AREA DESIGNATION
- X.XX AREA (ACRES)
- XX.XX RUNOFF Q (CFS)
- PROPOSED DRAINAGE AREA BOUNDARY

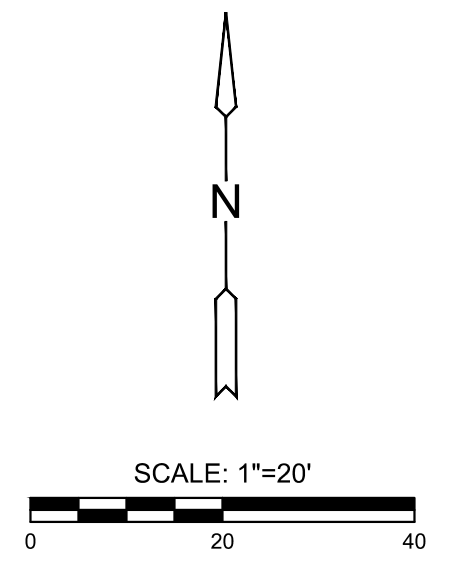
Q = C I A
 Q = (5 YEAR PEAK DISCHARGE IN CFS)
 C = (RATIONAL METHOD RUNOFF COEFFICIENT)
 I = (RAINFALL INTENSITY, INCH/HOUR)
 A = (DRAINAGE AREA IN ACRES)

Proposed Runoff Calculations						
Drainage Area	Area	Runoff Coeff. "C"	Time of Conc. (Min)	I ₁₀ (IN/HR.)	Q ₁₀ (cfs)	Comments
1	0.08	0.79	15	4.81	0.30	Drains to Ex. Curb Inlet
2	0.12	0.79	15	4.81	0.46	Drains to Area Inlet C
3	0.23	0.79	15	4.81	0.87	Drains to Curb Inlet A
4	0.11	0.79	15	4.81	0.42	Roof Drains to Private Storm
5	0.09	0.79	15	4.81	0.34	Roof Drains to Private Storm
6	0.08	0.79	15	4.81	0.30	Roof Drains to SWS Line 1
7	0.05	0.79	15	4.81	0.19	Roof Drains to Private Storm
8	0.19	0.79	15	4.81	0.72	Drains to Curb Inlet B
Total	0.95				3.61	

BENCHMARKS

#100 CHISELED "X" ON THE SOUTH END OF THE CURB ±30 FEET SOUTH OF THE NORTHEAST CORNER OF THE SUBJECT PROPERTY
 N: 1699794.82 E: 1692241.92
 ELEV: 1368.05

HORIZONTAL DATUM:
 KANSAS COORDINATE SYSTEM OF 1983, SOUTH ZONE
 VERTICAL DATUM:
 NAVD 88



PRIVATE STORM WATER SEWER PLANS FOR
AMBER WAVES
 WICHITA, KANSAS

©2022
 MKEC Engineering
 All Rights Reserved
 www.mkec.com
 These drawings and their contents, including, but not limited to, all concepts, designs, & ideas are the exclusive property of MKEC Engineering (MKEC), and may not be used or reproduced in any way without the express consent of MKEC.


INLET DRAINAGE AREA MAP

PROJECT NO.	2022-000732PPD	
DATE	JAN 2022	
SCALE	1" = 20'	
DESIGNED	DRAWN	CHECKED
KPG	KPG	KPG

NO.	REVISION	DATE

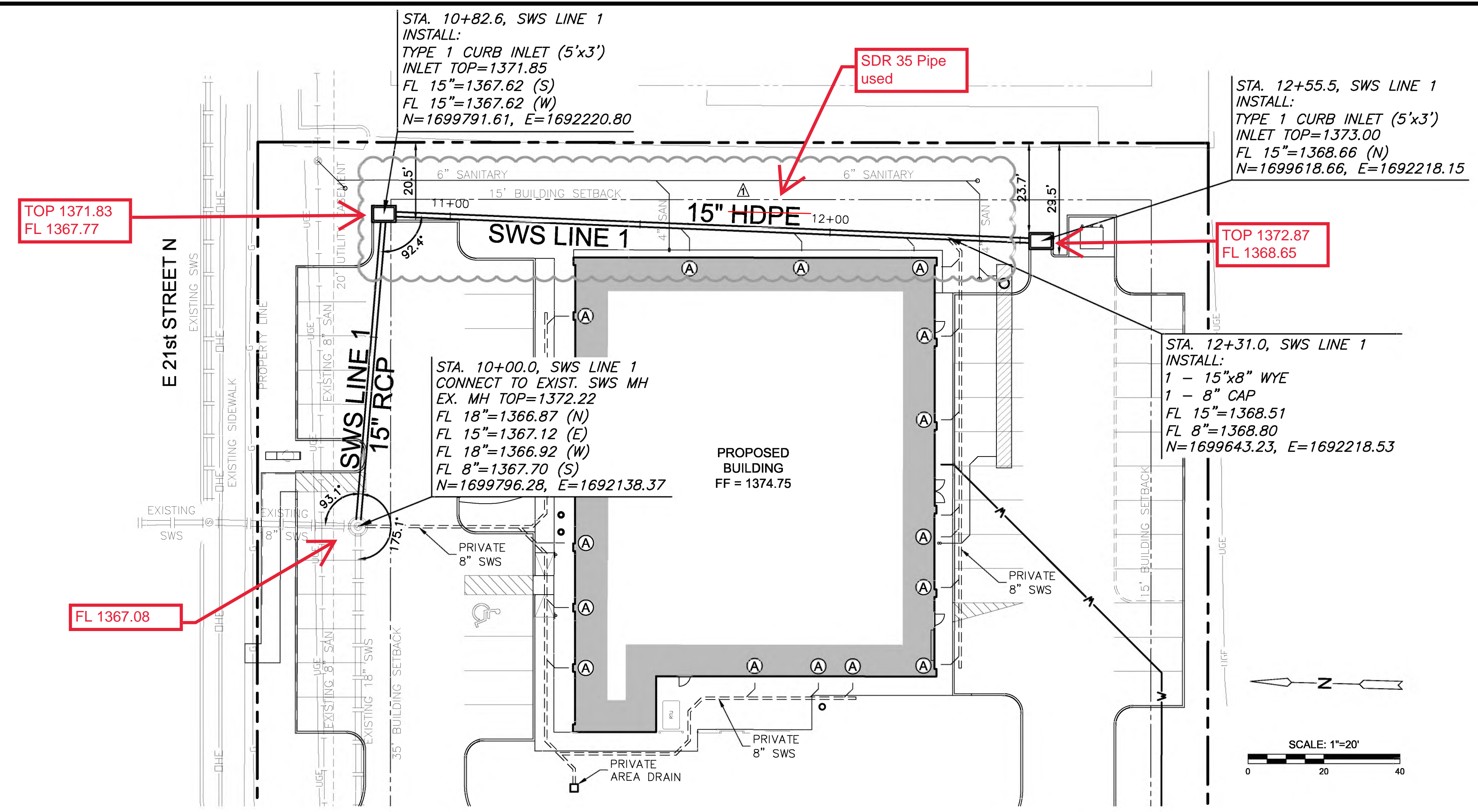
J:\PROJECTS\2022\12101010591_JGR_REED COMMERCIAL TRACT D LOT 100 210591 CAD\SHS\05 CIVIL\SWS - PPD\21891_SWS LINE 1.DWG
 PLOTTED: Monday, March 07, 2022 @ 09:52AM

AS BUILTS



KEMILLER
ENGINEERING PA

117 E. Lewis,
Wichita, KS 67202 (316)264-0242



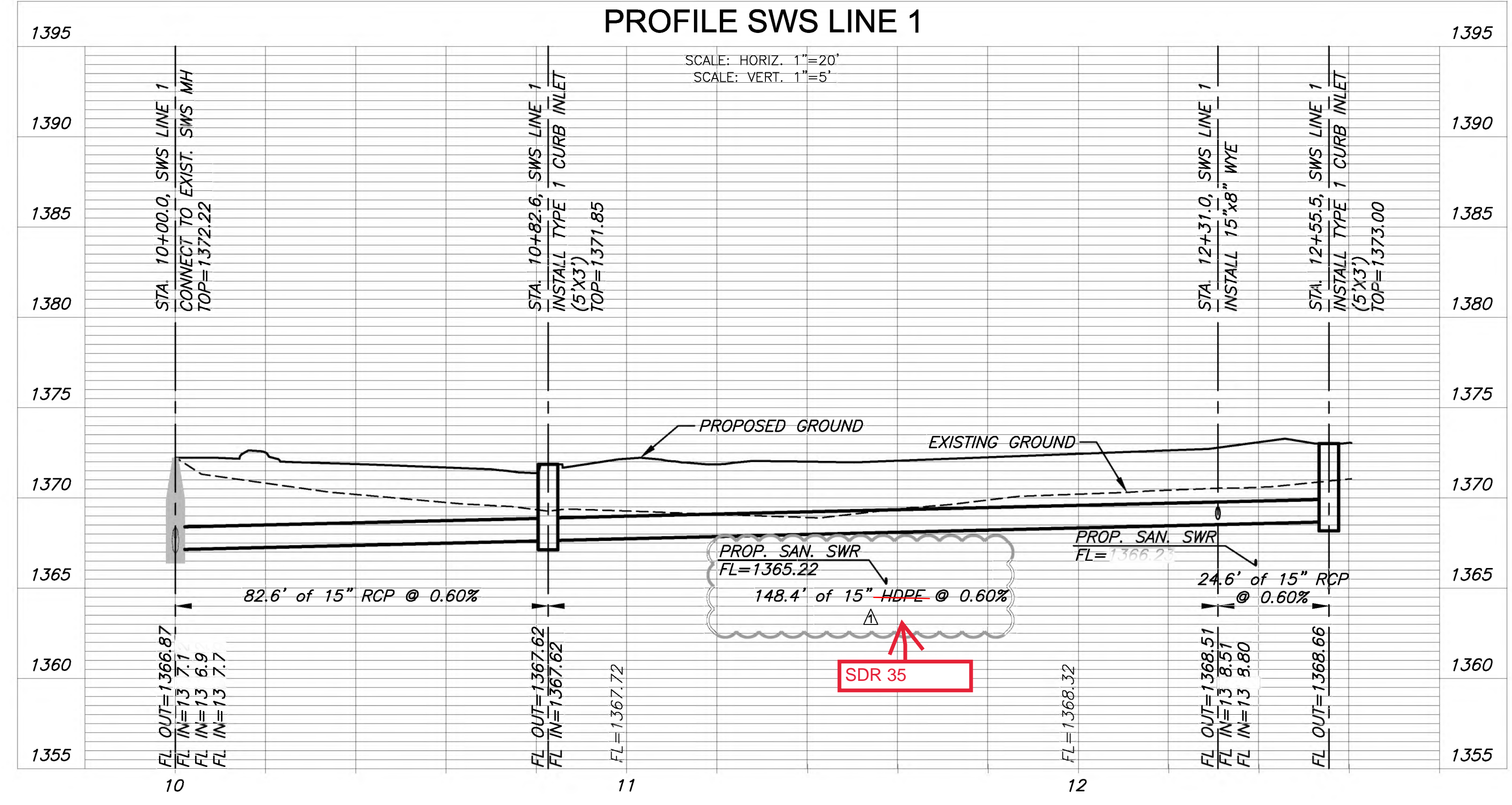
LEGEND

(A) PRIVATE SWS ROOF DRAIN CONNECTION

NOTES

1. IMPROVEMENTS SHOWN ON THIS PLAN SHALL BE OWNED AND MAINTAINED BY THE PROPERTY OWNER. THE CITY OF WICHITA IS NOT RESPONSIBLE FOR MAINTENANCE OF THESE IMPROVEMENTS.

**PLAN SWS LINE 1
PROFILE SWS LINE 1**



NOTE:
CONTRACTOR TO VERIFY THE DEPTH AND LOCATION OF EXISTING UTILITIES PRIOR TO CONSTRUCTION.



MKEC
Wichita, KS • 316-684-9600

PRIVATE STORM WATER SEWER PLANS FOR
AMBER WAVES
 WICHITA, KANSAS

©2022
MKEC Engineering
All Rights Reserved
www.mkec.com

These drawings and their contents, including, but not limited to, all concepts, designs, & ideas are the exclusive property of MKEC Engineering (MKEC), and may not be used or reproduced in any way without the express consent of MKEC.

SWS LINE 1		
PROJECT NO.	2022-000732PPD	
DATE	JAN 2022	
SCALE	1"=20'	
DESIGNED	DRAWN	CHECKED
KPG	KPG	KPG
1 PIPE MATERIAL	030722	
NO. REVISION	DATE	
SHEET NO.		
05 OF 10		