

# STORM SEWER IMPROVEMENTS TO SERVE WICHITA DESTINATION LOT 2B 2620 NORTH GREENWICH CT WICHITA, KANSAS

## GENERAL NOTES

1. THE CONTRACTOR SHALL COMPLY WITH ALL APPLICABLE SAFETY REGULATIONS. ALL CONSTRUCTION SHALL BE COMPLETED FOLLOWING CURRENT CITY STANDARD SPECIFICATIONS AND SPECIAL PROVISIONS
2. CONTRACTOR WILL BE REQUIRED TO PROVIDE NOTICE TO UTILITY COMPANIES A MINIMUM OF SEVENTY-TWO HOURS PRIOR TO ANY EXCAVATION. KANSAS ONE CALL 687-2470 THE CONTRACTOR MUST NOTIFY THE FOLLOWING IN CASE OF AN EMERGENCY

AT&T 1-800-246-8464  
BLACK HILLS ENERGY 1-800-694-8989  
CITY OF WICHITA WATER & SEWER 1-316-219-8921  
CITY OF WICHITA STORMWATER 1-316-268-4090  
CITY OF WICHITA TRAFFIC 1-316-268-4034  
COX COMMUNICATIONS 1-888-249-3530  
KANSAS GAS SERVICE 1-888-482-4950  
EVERGY 1-800-544-4857

Date: 2023-02-17  
Inspector: A. Thompson  
Design/Inspecting Firm: Aubry Enterprises/Kaw Valley Engineering, Inc.  
Contractor: Bear Construction  
Subcontractor: Sooter Excavating, LLC  
Built in general conformance to construction plans, except where noted on plans.

3. UTILITY SERVICE LINES, POLES, ETC. ARE TO BE ADJUSTED AS NECESSARY BY OTHERS PRIOR TO CONSTRUCTION UNLESS THE PLANS SPECIFICALLY CALL FOR THEIR ADJUSTMENT BY THE CONTRACTOR OR UNLESS THE PLANS SPECIFICALLY IDENTIFY A UTILITY TO BE ADJUSTED BY ITS OWNER DURING CONSTRUCTION. EXISTING UTILITIES AND THEIR LOCATIONS, AS SHOWN ON THE PLANS, REPRESENT THE BEST INFORMATION OBTAINABLE FOR DESIGN. THE CONTRACTOR WILL BE REQUIRED TO WORK AROUND EXISTING UTILITIES WITHIN THE RIGHT-OF-WAY WHICH DO NOT CONFLICT WITH PROPOSED CONSTRUCTION.
4. RUBBLE FROM THE REMOVAL OF MISCELLANEOUS STRUCTURES AND EXCESS EXCAVATION WHICH IS TO BE WASTED SHALL BE DISPOSED OF ON SITES TO BE PROVIDED BY THE CONTRACTOR. THESE SITES SHALL BE APPROVED BY THE ENGINEER AS TO SUITABILITY, APPEARANCE AND SITE LOCATION. LOCATIONS, IN THE OPINION OF THE ENGINEER, THAT WILL LEAVE AN UNSIGHTLY APPEARANCE WILL NOT BE APPROVED. ALL DISPOSAL SITES MUST BE APPROVED BY THE KANSAS DEPARTMENT OF HEALTH AND ENVIRONMENT. MATERIAL EITHER STOCKPILED OR DISPOSED OF IN A FLOOD PLAIN WILL REQUIRE A KANSAS STATE BOARD OF AGRICULTURE PERMIT. ANY MATERIAL DUMPED IN WATERS OF THE UNITED STATES OF WETLANDS IS SUBJECT TO US CORPS OF ENGINEERS PERMITTING REGULATIONS. ANY MATERIAL BURIED OR STOCK PILED BEYOND APPROVED CONSTRUCTION LIMITS WILL REQUIRE ADDITIONAL ARCHAEOLOGICAL INVESTIGATIONS UNLESS BURIED IN A PREVIOUSLY APPROVED BORROW LOCATION.
5. TREES AND SHRUBS IN PUBLIC RIGHT-OF-WAY WHICH ARE IN DIRECT CONFLICT WITH PROPOSED NEW CONSTRUCTION SHALL BE REMOVED BY THE CONTRACTOR WITH THE CITY ENGINEER'S APPROVAL. TREES AND SHRUBS WHICH ARE NOT IN DIRECT CONFLICT WITH PROPOSED NEW CONSTRUCTION SHALL BE SAVED AND PROTECTED FROM DAMAGE.
6. THE CONTRACTOR SHALL GIVE ALL PROPERTY OWNERS AND/OR TENANTS OF DEVELOPED PROPERTY ABUTTING THE CONSTRUCTION OF THE PROJECT A MINIMUM OF TEN DAYS NOTICE PRIOR TO START OF CONSTRUCTION
7. THE CONTRACTOR SHALL BE RESPONSIBLE FOR PRESERVING PROPERTY IRONS. THE CONTRACTOR WILL BE REQUIRED TO RE-ESTABLISH ANY PROPERTY IRONS WHICH ARE DAMAGED OR DESTROYED BY THIS CONSTRUCTION OPERATIONS SUCH IRONS SHALL BE RE-ESTABLISHED BY A LICENSED LAND SURVEYOR IN ACCORDANCE WITH STATE LAWS.
8. THE ENGINEERING DIVISION SHALL FIELD LOCATE WATER VALVES ONE TIME DURING CONSTRUCTION WHEN REQUESTED BY THE CONTRACTOR. IT SHALL BE THE CONTRACTORS RESPONSIBILITY TO PRESERVE SUCH FIELD LOCATIONS DURING THE CONSTRUCTION PROCESS. WATER VALVES, VALVE BOXES OR FIRE HYDRANTS DAMAGED DURING CONSTRUCTION SHALL BE REPAIRED BY CONTRACTOR AT HIS OWN EXPENSE. VALVE BOXES AND WATER METERS WITHIN THE PROJECT LIMITS SHALL BE ADJUSTED TO MATCH FINAL GRADES BY THE CONTRACTOR.
9. THE CONTRACTOR SHALL NOTIFY THE INSPECTING ENGINEER AND DAWNITA REINHARDT AT 316-268-4574 WITH THE CITY OF WICHITA WITH THE ANTICIPATED CONSTRUCTION START DATE AND NOTIFY THEM OF PROJECT COMPLETION. STAKING AND INSPECTION FOR THIS PROJECT WILL BE THE RESPONSIBILITY OF THE CONTRACTOR
10. IF TRAFFIC WILL BE IMPACTED BY CONSTRUCTION, A TRAFFIC CONTROL PLAN MUST BE SUBMITTED AND APPROVED BY THE CITY TRAFFIC ENGINEER, MIKE ARMOUR AT TRAFFIC@WICHITA.GOV BEFORE CONSTRUCTION CAN BEGIN. THE CONTRACTOR SHALL BE RESPONSIBLE FOR ALL TRAFFIC CONTROL MEASURES TO FACILITATE CONSTRUCTION. ALL CONSTRUCTION ZONE MARKINGS AND SIGNAGE SHALL CONFORM TO THE LATEST VERSION OF THE MANUAL ON UNIFORM TRAFFIC CONTROL DEVICES AS PUBLISHED BY THE US DEPT. OF TRANSPORTATION, FEDERAL HIGHWAY ADMINISTRATION. ALL COSTS ASSOCIATED WITH CONSTRUCTION MARKINGS AND SIGNAGE SHALL BE THE CONTRACTORS RESPONSIBILITY.
11. ALL ELEVATIONS ARE NAVD 88.
12. ALL AREAS DISTURBED DURING CONSTRUCTION THAT WILL NOT BE UNDER PROPOSED PAVEMENT SHALL BE RESTORED TO MATCH EXISTING CONDITIONS.
13. ALL EXISTING PAVEMENT AND CURB AND GUTTER WITHIN THE CONSTRUCTION LIMITS SHALL BE SAW CUT, FULL DEPTH, TO THE LINES SHOWN ON THE PLANS, OR TO THE NEAREST JOINT, AND REMOVED, UNLESS OTHERWISE NOTED. IF REMOVAL LIMITS ARE WITHIN THREE FEET OF A JOINT, REMOVE TO THE JOINT.
14. CITY MAINTENANCE OF STORM SEWER ENDS AT THE LAST STRUCTURE IN THE EASEMENT OR RIGHT-OF-WAY.
15. A PORTION OF EXCESS EXCAVATED MATERIAL SHALL BE MOUNDING AROUND MANHOLES WHICH EXTEND MORE THAN ONE FOOT ABOVE THE EXISTING GROUND. SUCH MOUND SHALL BE CONSTRUCTED WITH NEW DEVELOPMENT A SIX FOOT DIAMETER FLAT TOP WITH 4 TO 1 SIDE SLOPES DOWN TO THE ORIGINAL GROUND. THE ELEVATION OF THE FLAT TOP OF THE MOUND
16. GEOTECHNICAL REPORT AVAILABLE UPON REQUEST.
17. CONTRACTOR SHALL LIMIT THE EXTENT OF TRENCH OPENINGS OVERNIGHT AND WEEKENDS TO LESS THAN 50 FEET.
18. THE INSPECTING FIRM SHALL SUBMIT TO THE CITY STORMWATER MAINTENANCE DIVISION A DIGITAL COPY OF THE CCTV INSPECTION OF THE CONDUITS AND STRUCTURES FOLLOWING CONSTRUCTION. THE DIGITAL FILE FORMATION SHALL BE COMPATIBLE WITH THE CITY INPUT TEMPLATE. A COPY OF THE TEMPLATE IS AVAILABLE UPON REQUEST AT 316-268-4090.
19. THE CONTRACTOR SHALL PROTECT FROM DAMAGE AND SUPPORT EXISTING UTILITIES THROUGH CONSTRUCTION AS APPROVED BY THE UTILITY OWNER AND THE ENGINEER AT THE CONTRACTORS EXPENSE.

## PROJECT BENCHMARK

BM1  
N: 1702394.12  
E: 1686824.91  
ELEV: 1377.80  
DESC: SQUARE CUT ON NORTH SIDE OF CURB INLET ON SOUTHWEST CORNER OF DULUTH PARKING LOT

## ENGINEER OF RECORD

AUBRY ENTERPRISES  
JAY D. O'DELL, P.E.  
6036 METCALF AVE  
OVERLAND PARK, KS 66202  
JAY.ODELL@AUBRYENTERPRISES.COM

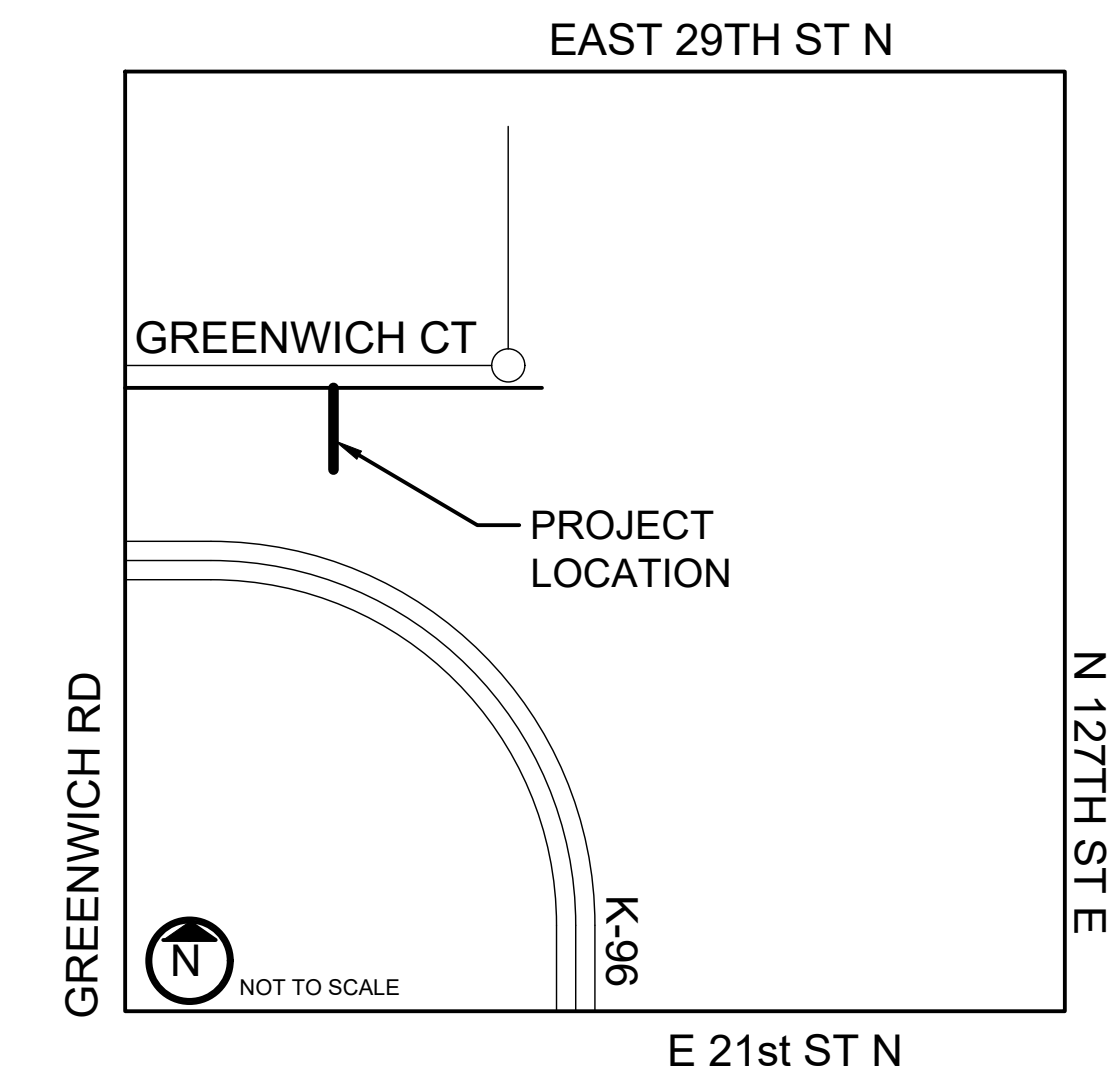
## SUMMARY OF QUANTITIES

RIM ADJUSTMENT	EA	3
OPEN GRATED TOP	EA	1
CONNECTION TO MANHOLE	EA	1

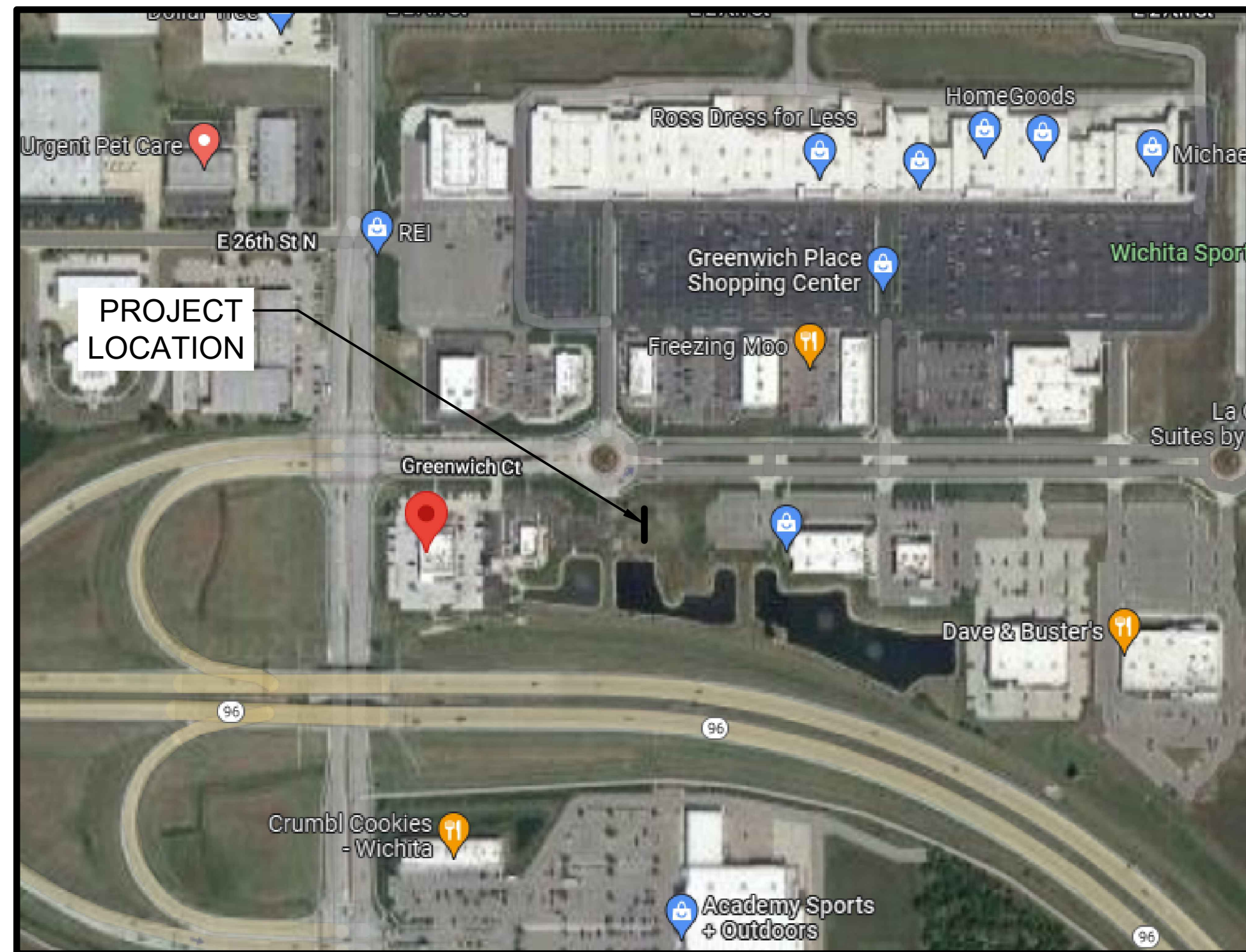
10/5/2022

## SHEET INDEX

1. GENERAL LAYOUT
2. GRADING PLAN
3. PLAN AND PROFILE
4. EROSION CONTROL PLAN
5. DETAILS



SITE VICINITY MAP  
NW QUARTER OF  
SECTION 3 TOWNSHIP  
27 SOUTH  
RANGE 2 EAST



APPROVED AS NOTED  
BY WICHITA PUBLIC  
WORKS ENGINEERING  
DIVISION

ENGINEERING SHAWN MELLIES 10/4/22

STORMWATER JOE HICKLE 10/4/22

NOTE TO CONTRACTORS

INSPECTION AND TESTING FOR THIS PROJECT IS TO BE PROVIDED BY A LICENSED CONSULTING ENGINEERING FIRM UNDER CONTRACT WITH THE OWNER/DEVELOPER. SAID INSPECTION TO BE IN ACCORDANCE WITH THE CITY OF WICHITA STANDARD CONSTRUCTION ENGINEERING PRACTICES AND CERTIFIED BY A LICENSED PROFESSIONAL ENGINEERING IN THE STATE OF KANSAS. NO WORK SHALL BE PERFORMED BY THE CONTRACTOR WITHOUT SUCH INSPECTION NOR SHALL ANY WORK BE COMMENCED WITHOUT WRITTEN AUTHORIZATION BY CITY ENGINEERING. ALL CONSTRUCTION AND MATERIALS SHALL COMPLY WITH THE CURRENT CITY OF WICHITA SPECIFICATIONS AND STANDARD AND SPECIAL PROVISIONS. (ON FILE AND AVAILABLE AT WICHITA.GOV)

AN APPROVED COPY OF THESE PLANS SIGNED BY CITY STAFF ARE REQUIRED ON-SITE

STORMWATER CERTIFICATION

NEW DEVELOPMENT OR REDEVELOPMENT

STORMWATER PERMIT # \_\_\_\_\_

NOI PERMIT # N/A

THERE CONSTRUCTION PLANS WERE PREPARED IN ACCORDANCE WITH THE CURRENT STORMWATER MANAGEMENT REGULATIONS AS SET FORTH IN THE CITY OF WICHITA'S STORMWATER MANAGEMENT ORDINANCE 16.32 AND THE POLICIES/GUIDELINES PRESENTED IN THE WICHITA/SEDGWICK COUNTY STORMWATER MANUAL.

SITE AREA (ACRES) 0.599 ACRES

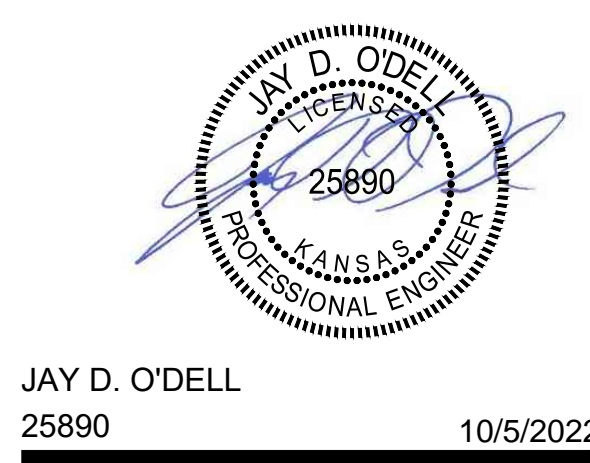
DISTURBED AREA (ACRES) 0.70 ACRES

WATER QUALITY TREATMENT OBMP PROGRAM

DOWNSTREAM CHANNEL PROTECTION N/A

DETENTION N/A

THE BMP USED FOR THIS DEVELOPMENT IS OBMP PROGRAM



WDDMBB LLC  
1707 N WATERFRONT PARKWAY  
WICHITA, KS 67226

CLIENT  
AUBRY ENTERPRISES  
ENGINEERING | LOGISTICS | AGRICULTURE  
Responsibly Sustainable

KANSAS OFFICE  
6036 METCALF AVE  
OVERLAND PARK, KS 66202

COLORADO OFFICE  
48700 COUNTY RD FF  
AKRON, COLORADO 80720

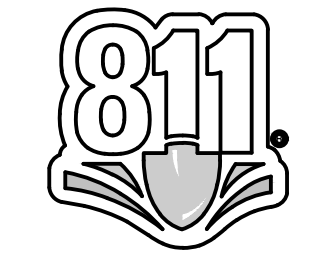
REV	DESCRIPTION	DATE

WICHITA  
DESTINATION  
LOTS 2A & 2B

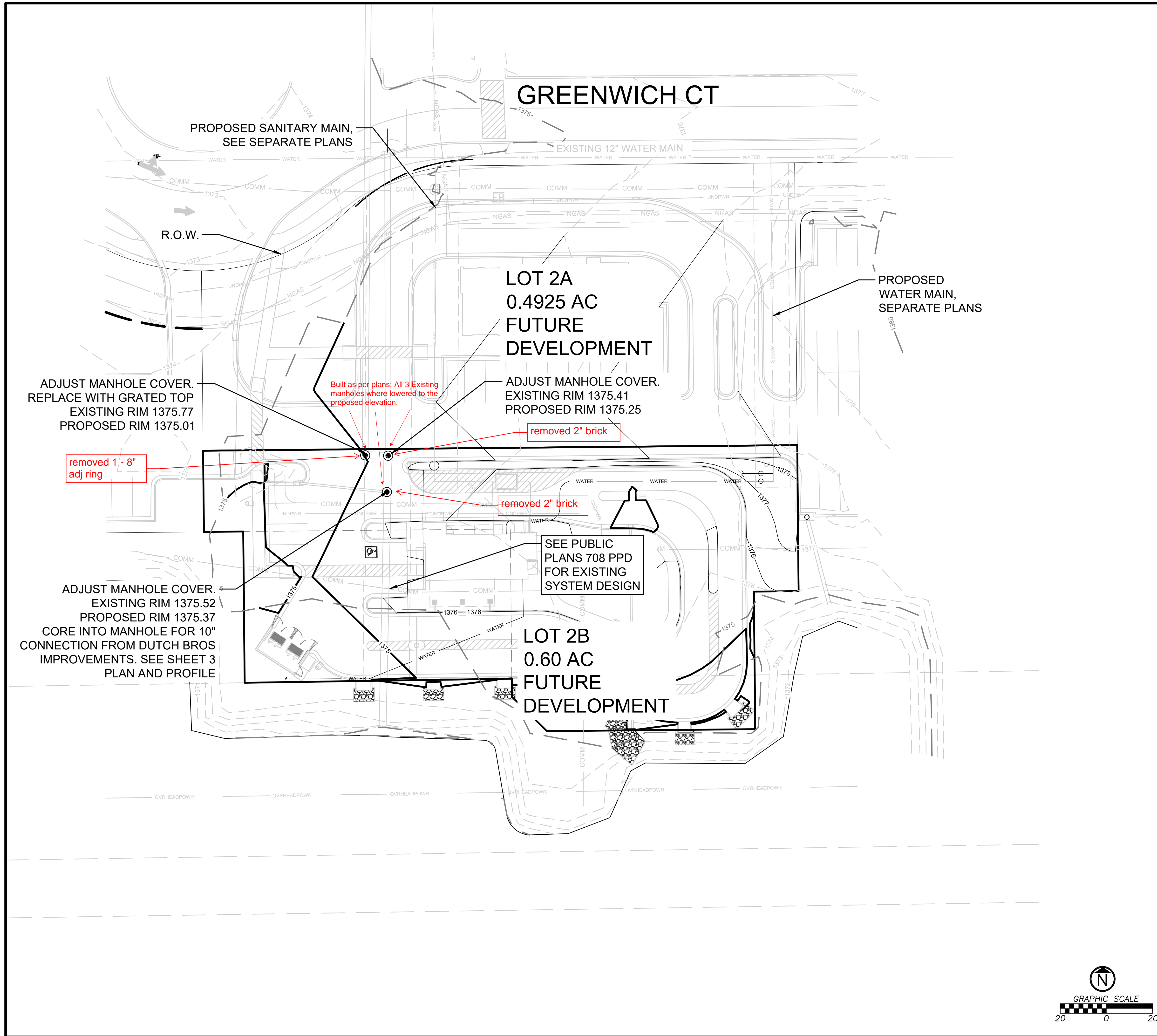
10/5/2022  
PPD

2620 GREENWICH CT  
WICHITA, KS 67226

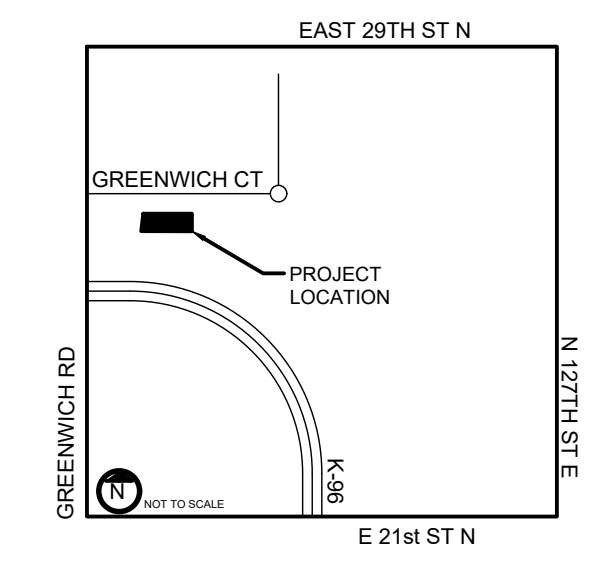
TITLE



Know what's below.  
Call before you dig.



SITE VICINITY MAP  
NW QUARTER OF  
SECTION 3 TOWNSHIP  
27 SOUTH  
RANGE 2 EAST



JAY D. O'DELL  
25890  
10/5/2022

CLIENT  
**WDDMBB LLC**  
1707 N WATERFRONT PARKWAY  
WICHITA, KS 67226

ENGINEERING FIRM OF RECORD  
**AUBRY ENTERPRISES**  
ENGINEERING | LOGISTICS | AGRICULTURE  
*Responsibly Sustainable*

KANSAS OFFICE  
6036 METCALF AVE  
OVERLAND PARK, KS 66202

COLORADO OFFICE  
48700 COUNTY RD FF  
AKRON, COLORADO 80720

REV	DESCRIPTION	DATE

**WICHITA DESTINATION**  
LOTS 2A & 2B

10/5/2022  
PPD

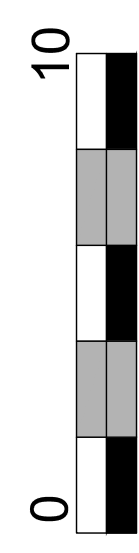
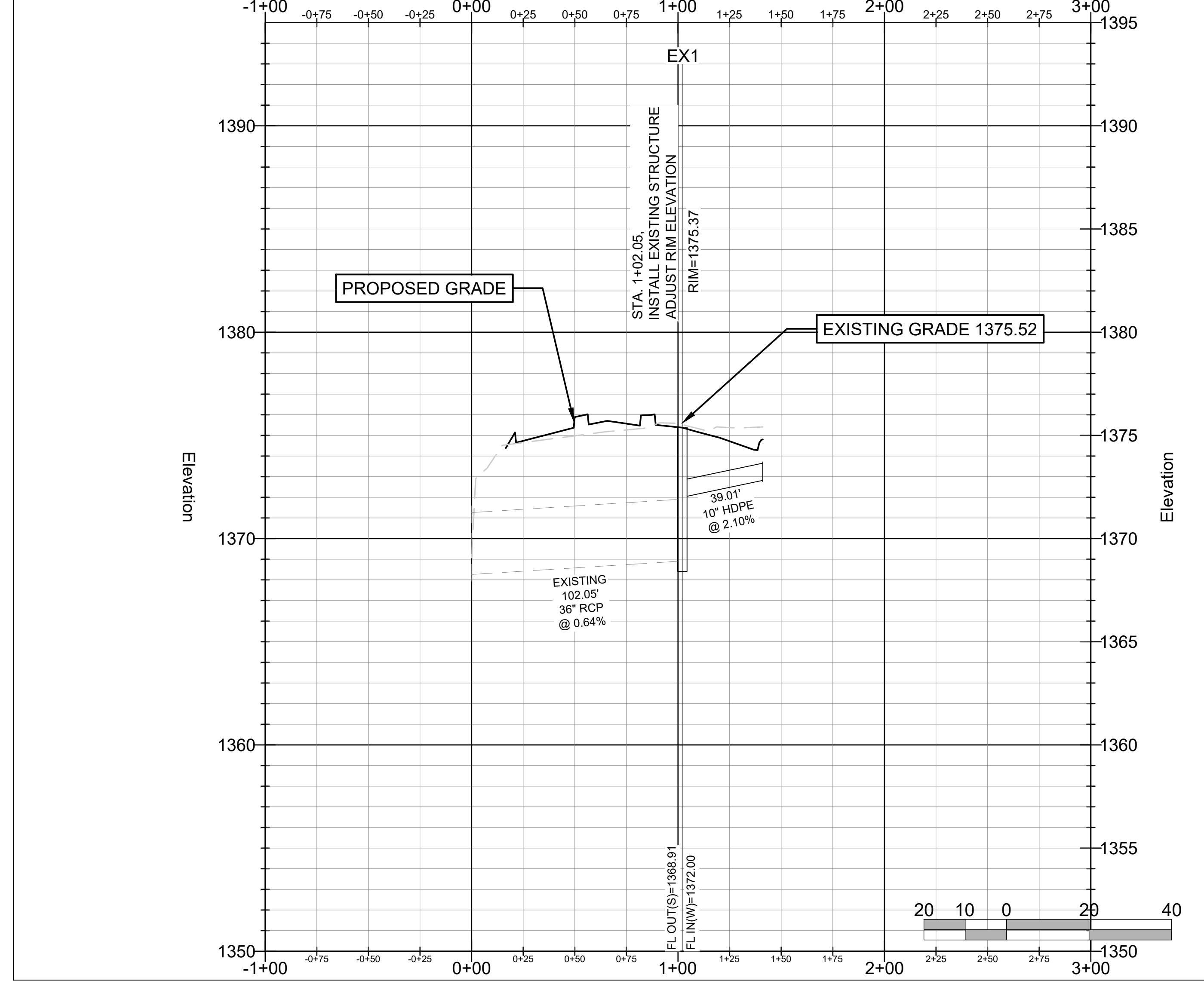
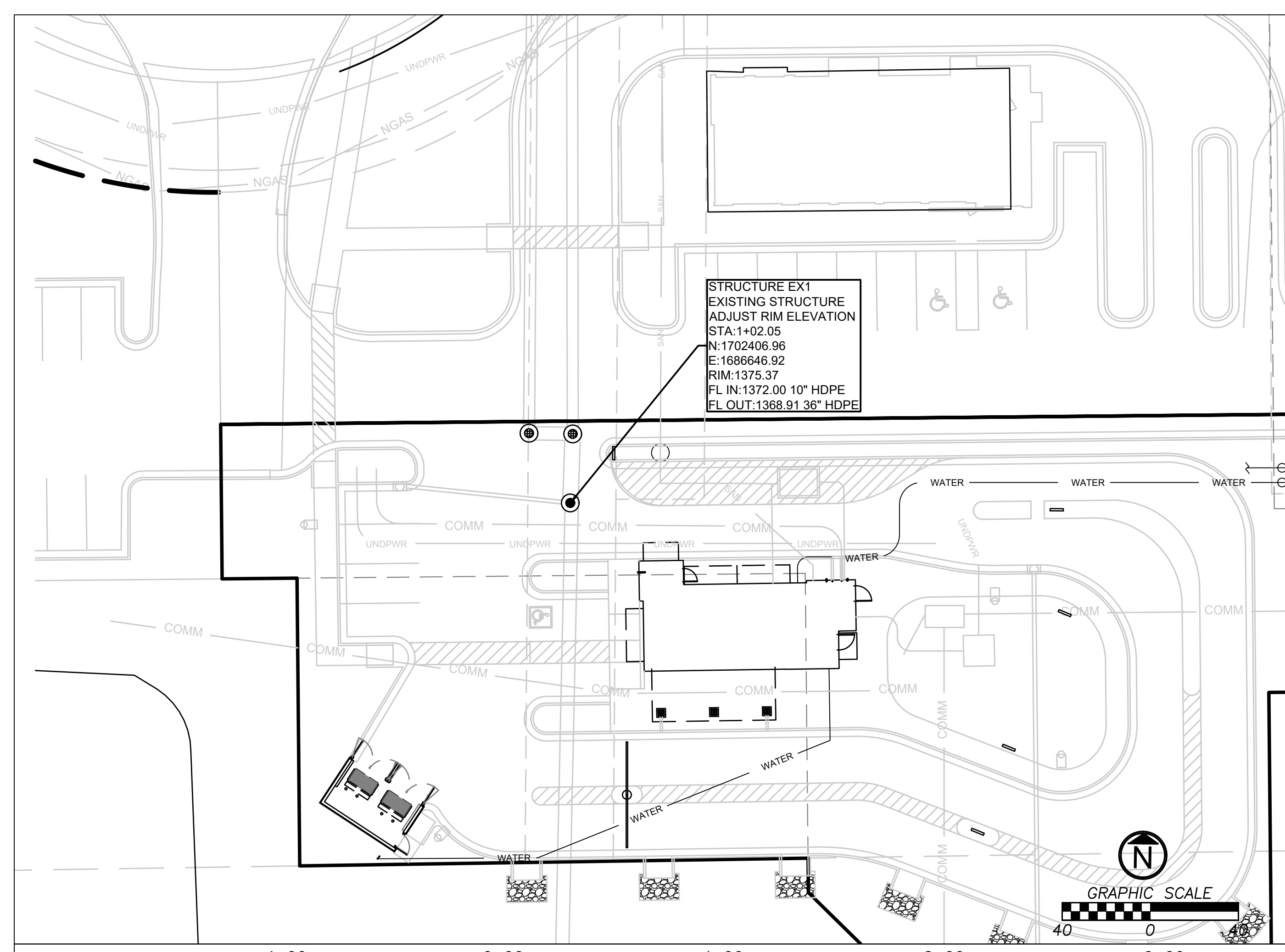
2620 GREENWICH CT  
WICHITA, KS 67226

**GENERAL LAYOUT**



JAY D. O'DELL  
25890 10/5/2022

CONTRACTOR TO FIELD VERIFY  
ALL LOCATIONS AND DEPTHS  
OF EXISTING UTILITIES.



CLIENT  
**WDDMBB LLC**  
1707 N WATERFRONT  
PARKWAY  
WICHITA, KS 67226

ENGINEERING FIRM OF RECORD  
**AUBRY ENTERPRISES**  
ENGINEERING | LOGISTICS | AGRICULTURE  
*Responsibly Sustainable*

KANSAS OFFICE  
6036 METCALF AVE  
OVERLAND PARK, KS 66202

COLORADO OFFICE  
48700 COUNTY RD FF  
AKRON, COLORADO 80720

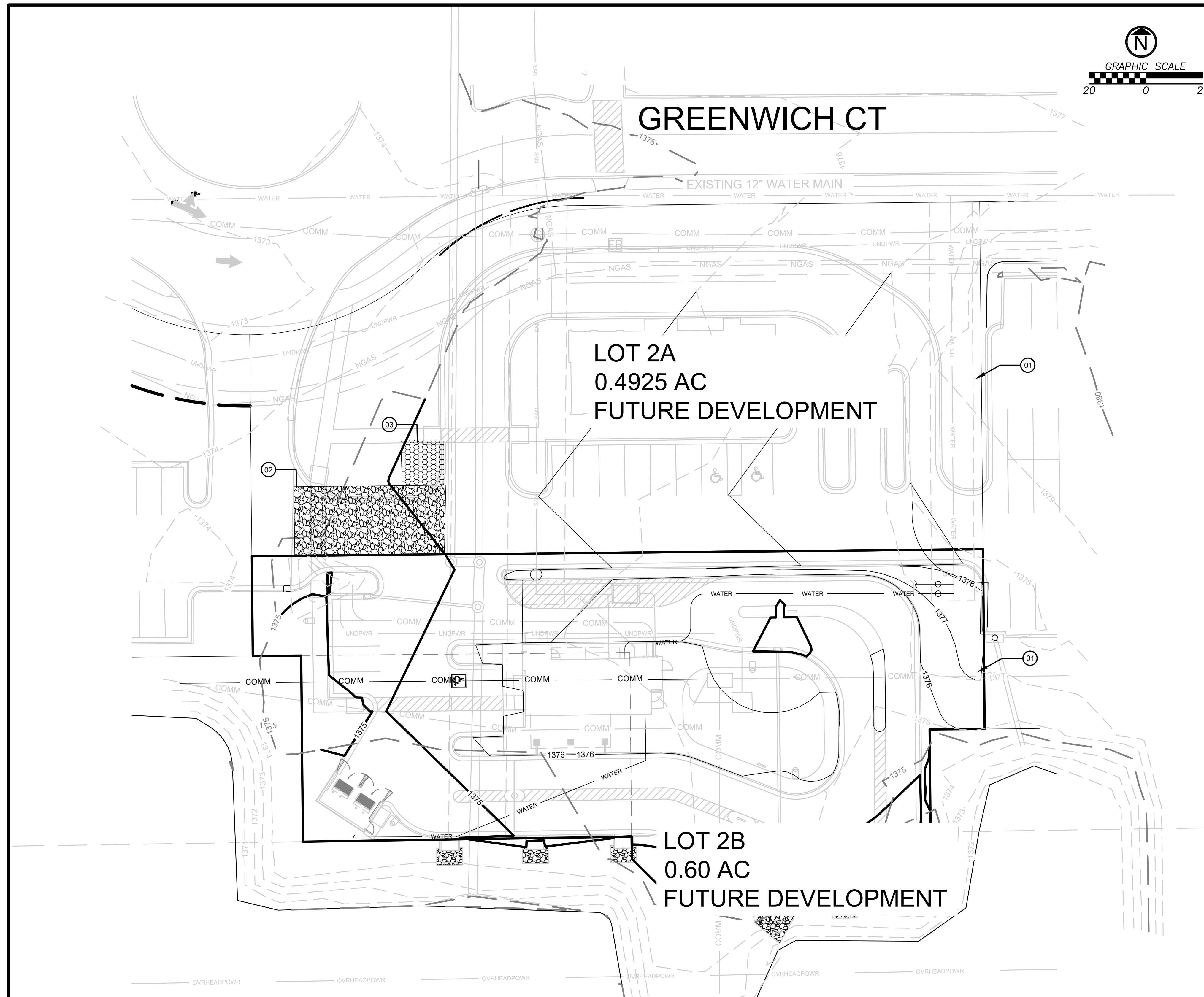
REV	DESCRIPTION	DATE

**WICHITA  
DESTINATION  
LOTS 2A & 2B**

**10/5/2022**  
PPD

2620 GREENWICH CT  
WICHITA, KS 67226

**PLAN AND  
PROFILE**



## EROSION AND POLLUTION CONTROL NOTES

1. PRIOR TO LAND DISTURBANCE ACTIVITIES, THE FOLLOWING SHALL OCCUR:
  - 1.1. DELINEATE THE OUTER LIMITS OF ANY NATURAL STREAM CORRIDOR DESIGNATED IN ACCORDANCE WITH LOCAL STANDARDS WITH CONSTRUCTION FENCING.
  - 1.2. IDENTIFY THE LIMITS OF CONSTRUCTION ON THE GROUND WITH EASILY RECOGNIZABLE INDICATIONS SUCH AS CONSTRUCTION STAKING, CONSTRUCTION FENCING AND PLACEMENT OF PHYSICAL BARRIERS OR OTHER MEANS ACCEPTABLE TO THE INSPECTOR AND IN CONFORMANCE WITH THE EROSION AND POLLUTION CONTROL PLANS:
    - 1.2.1. CONSTRUCT A STABILIZED ENTRANCE/PARKING/STAGING AREA
    - 1.2.2. INSTALL PERIMETER CONTROLS AND PROTECT AND EXISTING STORMWATER INLETS
    - 1.2.3. REQUEST AN INITIAL INSPECTION OF THE INSTALLED PRE-CONSTRUCTION POLLUTION CONTROL MEASURE DESIGNATED ON THE APPROVED EROSION AND POLLUTION CONTROL PLAN. LAND DISTURBANCE WORK SHALL NOT PROCEED UNTIL APPROVED BY COUNTY.
2. THE SITE SHALL COMPLY WITH ALL REQUIREMENTS OF THE KANSAS WATER POLLUTION CONTROL AND NPDES STORMWATER RUNOFF FORM CONSTRUCTION SITES GENERAL PERMIT, APPLICABLE SECTIONS OF THE CURRENT APWA KC MANUAL, AND THE CURRENT JOHNSON COUNTY STANDARDS INCLUDING BUT NOT LIMITED TO:
  - 2.1. IMMEDIATE INITIATION OF TEMPORARY STABILIZATION BMPs ON DISTURBED AREAS WHERE CONSTRUCTION ACTIVITIES HAVE TEMPORARILY CEASED ON THAT PORTION OF THE PROJECT SITE IF CONSTRUCTION ACTIVITIES WILL NOT RESUME FOR A PERIOD EXCEEDING 14 CALENDAR DAYS. TEMPORARY STABILIZATION MAY INCLUDE ESTABLISHMENT OF VEGETATION, GEOTEXTILES, MULCHES OR OTHER TECHNIQUES TO REDUCE OR ELIMINATE EROSION UNTIL EITHER FINAL STABILIZATION CAN BE ACHIEVED OR UNTIL FURTHER CONSTRUCTION ACTIVITIES TAKE PLACE TO RE-DISTURB THE AREA. THIS STABILIZATION MUST BE COMPLETED WITHIN 14 CALENDAR DAYS. AN INSPECTION LOG IS LOCATED WITHIN THE PROJECT SWPPP DOCUMENT AND SHALL BE MAINTAINED. LOGS SHALL BE AVAILABLE FOR REVIEW BY THE REGULATOR AUTHORITY UPON REQUEST.
  - 2.2. THE EROSION AND POLLUTION CONTROL PLAN SHALL BE ROUTINELY UPDATED TO SHALL ALL MODIFICATIONS AND AMENDMENTS TO THE ORIGINAL PLAN. A COPY OF THE EROSIONS AND POLLUTION CONTROL PLAN SHALL BE KEPT ON SITE AND MADE AVAILABLE FOR REVIEW BY THE REGULATORY AUTHORITY.
  - 2.3. UNLESS OTHERWISE NOTED ON THE PLANS, ALL SEEDING MUST CONFORM TO APWA SECTION 2406. TEMPORARY SEEDING SHALL ONLY BE USED FOR PERIODS NOT TO EXCEED 12 MONTHS. FOR FINAL STABILIZATION, TEMPORARY SEEDING SHALL ONLY BE USED TO ESTABLISH VEGETATION OUTSIDE THE PERMANENT SEEDING OR SODDING DATES AS SPECIFIED IN THE STANDARD SPECIFICATIONS. FINAL STABILIZATION REQUIRES A UNIFORM PERENNIAL VEGETATIVE COVER WITH A DENSITY OF 70% OVER 100% OF DISTURBED AREA.
3. EROSION AND POLLUTION CONTROL SHALL BE PROVIDED FOR THE DURATION OF THE PROJECT. ALL INSTALLED EROSION AND POLLUTION CONTROL BMPs SHALL BE MAINTAINED IN A MANNER THAT PRESERVES THEIR EFFECTIVENESS. IF THE COUNTY DETERMINES THAT THE BMPs IN PLACE DO NOT PROVIDE ADEQUATE EROSION AND POLLUTION CONTROL AT ANY TIME DURING THE PROJECT, ADDITIONAL OR ALTERNATE MEASURES THAT PROVIDE EFFECTIVE CONTROL SHALL BE REQUIRED.
4. CONCRETE WASH OR RINSEWATER FROM CONCRETE MIXING EQUIPMENT, TOOLS AND/OR READY-MIX TRUCKS, ETC. MAY NOT BE DISCHARGED INTO OR BE ALLOWED TO RUN TO ANY EXISTING WATER BODY OR PORTION OF THE STORMWATER SYSTEM. ONE OR MORE LOCATION FOR CONCRETE WASHOUT WILL BE DESIGNATED ON SITE, SUCH THAT DISCHARGES DURING CONCRETE WASHOUT WILL BE CONTAINED IN A SMALL AREA WHERE WASTE CONCRETE CAN SOLIDIFY IN PLACE. PROPER SIGNAGE WILL BE INSTALLED TO DIRECT USERS TO CONCRETE WASHOUT.
5. WORK IN OR NEAR WATER BODIES SHALL LIMIT DISTURBANCE AREA AND DURATION OF DISTURBANCE AS DESCRIBED IN THE COUNTY STANDARDS.
6. POLLUTION OF STREAMS, LAKES, WETLANDS, DRAINAGE WAYS OR STORM SEWERS FROM FUEL, OILS, HAZARDOUS CHEMICALS, SEDIMENT, TRASH, DEBRIS, OR OTHER SUBSTANCES RESULTING FROM CONSTRUCTION ACTIVITIES SHALL NOT BE ALLOWED. ALL SPILLS IN EXCESS OF REPORTABLE QUANTITIES SHALL BE REPORTED TO AL OF THE FOLLOWING WITHIN 24 HOURS OF THEIR OCCURRENCE:
  - KDHE 24-HOUR SPILL RESPONSE CENTER - (785) 296-1679
  - KDHE NORTHEAST DISTRICT, LAWRENCE - (785) 842-4600
  - NATIONAL SPILL RESPONSE CENTER - 1-800-424-8802
7. SPILLS THAT POSE IMMEDIATE THREAT TO PUBLIC SAFETY OR CONTAMINATION OF A WATER BODY SHALL BE REPORTED IMMEDIATELY TO THE LOCAL FIRE DEPARTMENT AT 911. SUCH SPILLS SHALL ALSO BE REPORTED TO THE KANSAS DIVISION OF EMERGENCY MANAGEMENT 1-800-275-0297
8. SILT FENCES AND SEDIMENT CONTROL BMPs WHICH ARE SHOWN ALONG THE BACK OF CURB MUST BE INSTALLED WITHIN TWO WEEKS OF CURB BACKFILL AND PRIOR TO PLACEMENT OF BASE ASPHALT. EXACT LOCATIONS OF THESE EROSION CONTROL METHODS MAY BE FIELD ADJUSTED TO MINIMIZE CONFLICTS WITH UTILITY CONSTRUCTION. HOWEVER, ANTICIPATED DISTURBANCE BY UTILITY CONSTRUCTION SHALL NOT DELAY INSTALLATION.
9. REQUIRED SEDIMENT BASINS AND TRAPS SHALL BE INSTALLED AS EARLY AS POSSIBLE DURING MASS GRADING AS INDICATED IN THE STAGING CHART. SEDIMENT BASINS AND TRAPS SHALL BE CLEANED OUT WHEN THE SEDIMENT CAPACITY HAS BEEN REDUCED BY 20% OF ITS ORIGINAL DESIGN VOLUME.
10. ALL MANUFACTURED BMPs SUCH AS EROSION CONTROL BLANKETS, TRMS, BIODEGRADABLE LOGS, FILTER SOCKS, SYNTHETIC SEDIMENT BARRIERS AND HYDRAULIC EROSION CONTROL SHALL BE INSTALLED AS DIRECTED BY MANUFACTURER.
11. THE ABOVE REQUIREMENTS ARE THE RESPONSIBILITY OF THE PERMITTEE FOR THE SITE.



JAY D. ODELL  
25890  
10/5/2022

CLIENT  
**WDDMBB LLC**  
1707 N WATERFRONT PARKWAY  
WICHITA, KS 67226

ENGINEERING FIRM OF RECORD  
**AUBRY ENTERPRISES**  
ENGINEERING | LOGISTICS | AGRICULTURE  
*Responsibly Sustainable*  
KANSAS OFFICE  
6036 METCALF AVE  
OVERLAND PARK, KS 66202  
COLORADO OFFICE  
48700 COUNTY RD FF  
AKRON, COLORADO 80720

REV	DESCRIPTION	DATE

**WICHITA DESTINATION**  
**LOTS 2A & 2B**

**10/5/2022**  
PPD

2620 GREENWICH CT  
WICHITA, KS 67226

**EROSION CONTROL PLAN**

### EROSION AND SEDIMENT CONTROL STAGING CHART

PROJECT STAGE	BMP REF	BMP DESCRIPTION	NOTES:
STAGE 1- PLACE PRIOR TO LAND DISTURBANCE	01	STORM INLET PROTECTION	PLACE AS SHOWN
	02	CONSTRUCTION ENTRANCE	PLACE AS SHOWN
	03	CONCRETE WASH OUT	PLACE AS SHOWN

### EROSION CONTROL LEGEND

- TEMPORARY CONSTRUCTION ENTRANCE
- SILT FENCE
- CONCRETE WASHOUT

**DETAILS**  
SEE SHEET 4 FOR THE FOLLOWING:

- 101 TEMPORARY CONSTRUCTION
- 102 STORM INLET PROTECTION
- 103 CONCRETE WASHOUT

