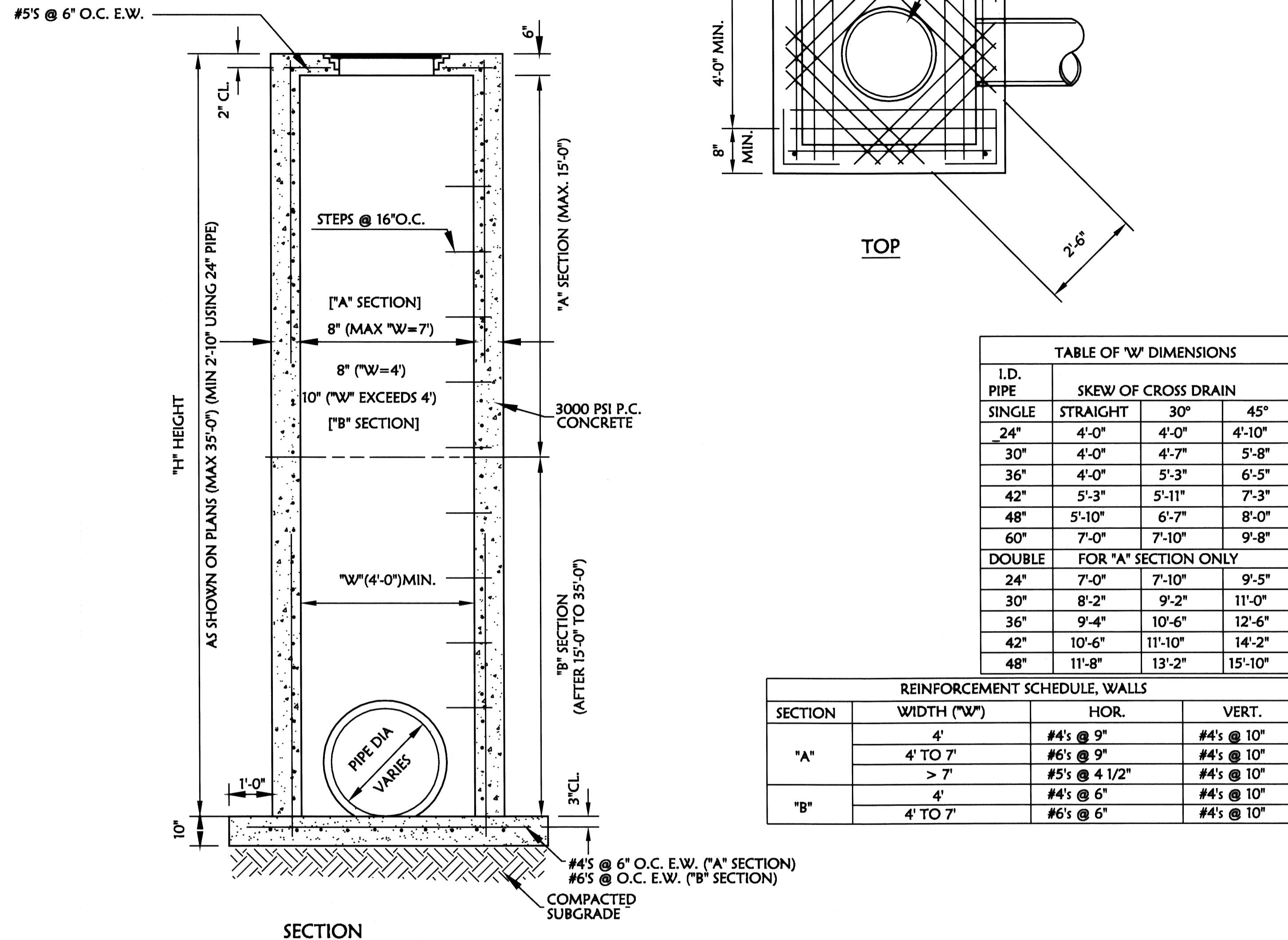
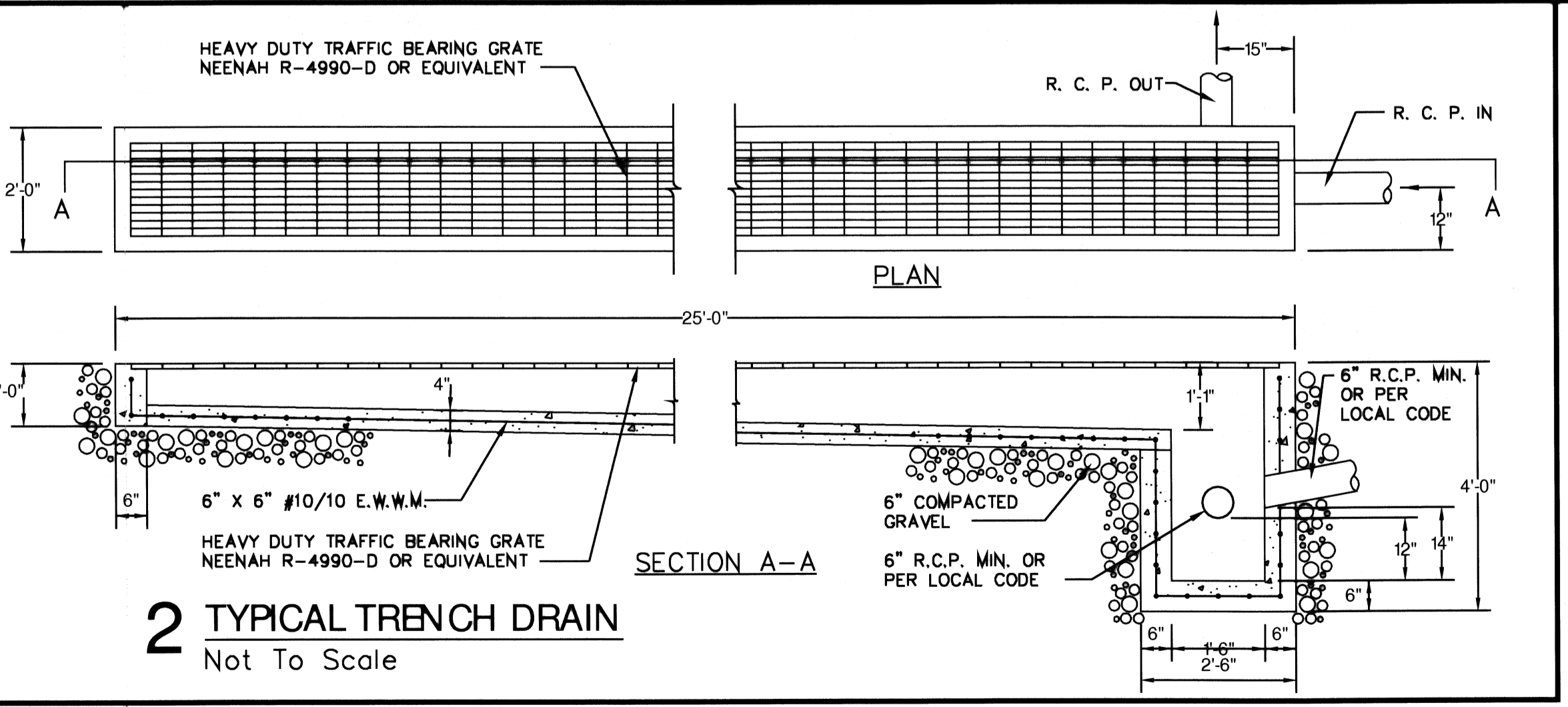


NOTES:

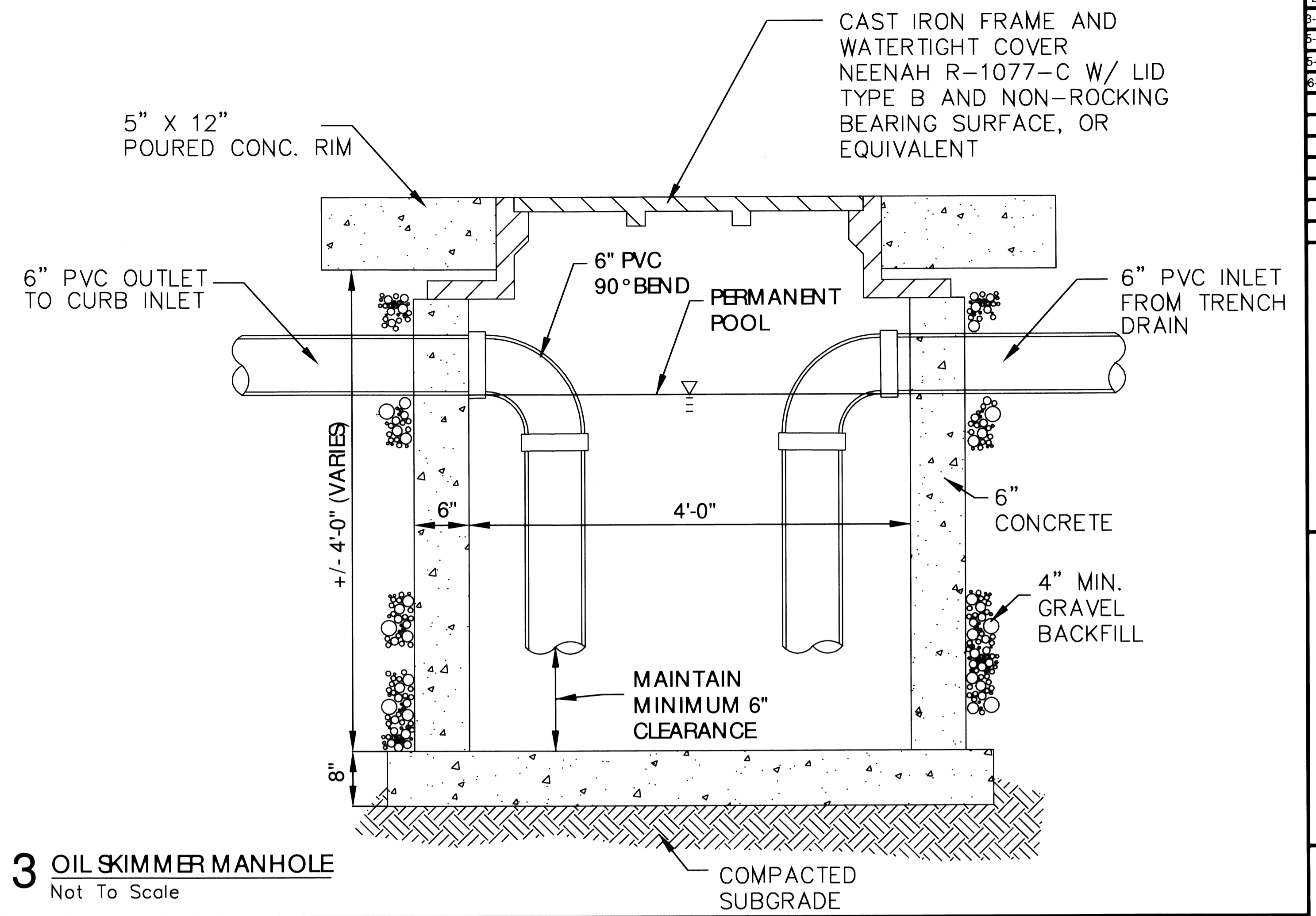
1. ALL EXPOSED CORNERS TO HAVE 3/4" CHAMFER
2. ALL REINFORCING BARS TO BE GRADE 60.
3. COPOLYMER POLYPROPYLENE PLASTIC STEPS, REINFORCED WITH 1/2" GRADE 60 STEEL REINFORCEMENT, 16" O.C. NOT REQUIRED WHEN "H" IS LESS THAN 4'-0".
4. A PRECAST BOX CAN BE USED WHEN APPROVED.
5. ALL #4 & #5 REINFORCING BARS TO HAVE 1-1/2" COVER, LARGER SIZES TO HAVE 2" COVER.



1 STANDARD JUNCTION BOX
Not To Scale



2 TYPICAL TRENCH DRAIN
Not To Scale



3 OIL SKIMMER MANHOLE
Not To Scale

DATE	REV	DESCRIPTION
3-29-07		DESIGNED PER ASHRAE 90.1-2005
5-03-07	1	CONVERT TO PRIVATE PROJECT
5-17-07	2	REVISED PER SUDT UNDERBAR COMMENTS-1107
6-11-07	3	CITY SUBMITTAL FOR PERMIT



Civil Engineering Inc.
 1008 N.W. 7th St., Ste. C, Bentonville, AR 72712
 (479) 464-8850 (V) / (479) 464-9040 (F)
 Regional Office: 10285 Grand Line, Inc. Lenexa, KS 66215
 (913) 310-0470 (V) / (913) 310-0281 (F)

McDonald's®
 THESE KANSAS SPECIFICATIONS ARE THE PROPERTY OF McDONALD'S CORPORATION AND SHALL NOT BE REPRODUCED WITHOUT THEIR WRITTEN PERMISSION.
 KANSAS CITY
 10801 MASTIN BLVD., STE. 400, OVERLAND PARK, KS 66204

STREET ADDRESS 1421 N WEST STREET		
CITY WICHITA	STATE KANSAS	
COUNTY SEDFEWICK		
REGIONAL DWG. NO. 15-0276		
DETAIL SHEET		

STATUS	DATE	BY
PRELIMINARY	-/-/-	-
PLAN CHECKED	-/-/-	-
ASBUILT	-/-/-	-
PROJECT NO.	06-0716	

U6