

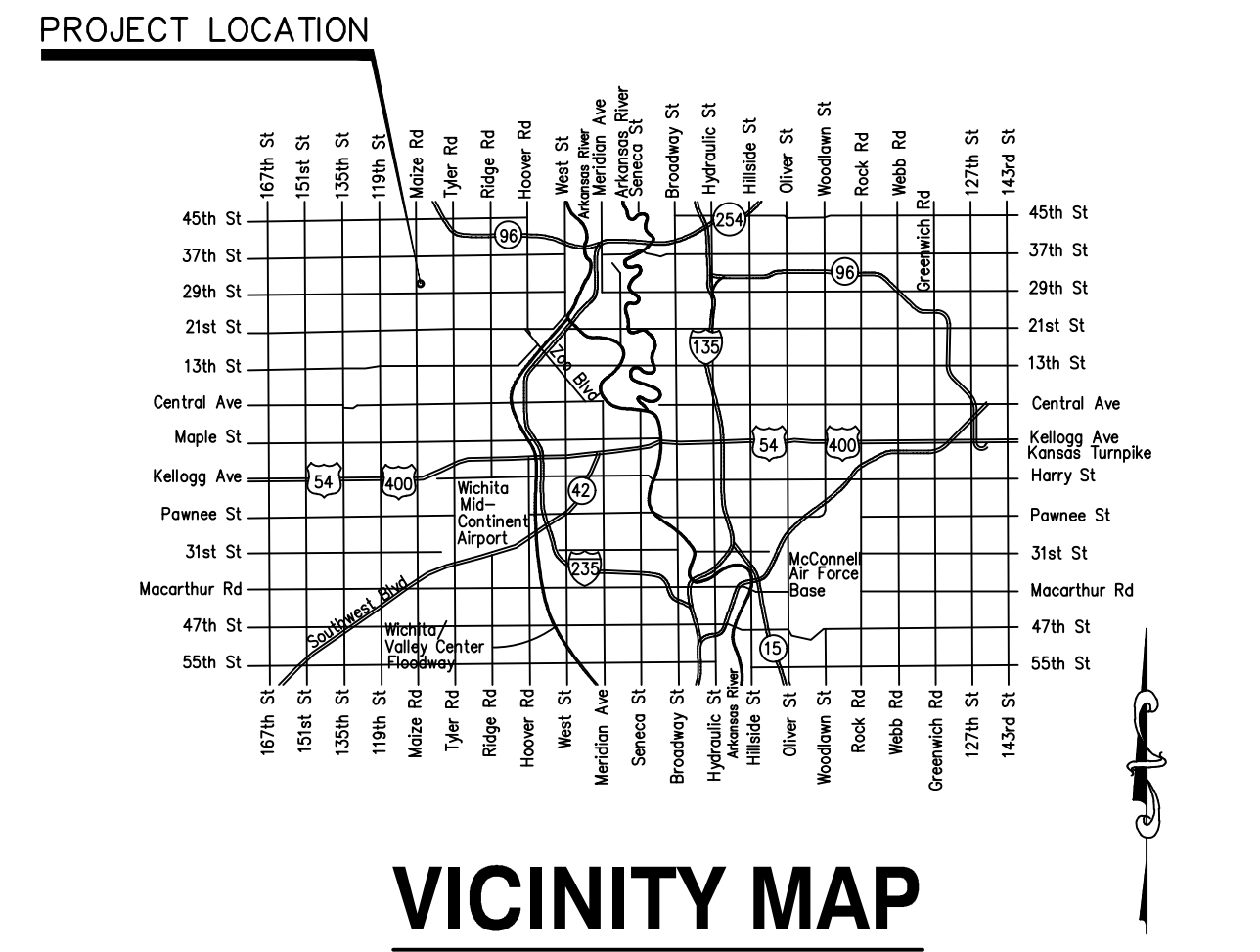
GENERAL NOTES:

- THE CONTRACTOR SHALL COMPLY WITH ALL APPLICABLE SAFETY REGULATIONS. ALL CONSTRUCTION SHALL BE COMPLETED FOLLOWING CURRENT CITY STANDARD SPECIFICATIONS AND SPECIAL PROVISIONS.
- CONTRACTOR WILL BE REQUIRED TO PROVIDE NOTICE TO UTILITY COMPANIES A MINIMUM OF SEVENTY-TWO (72) HOURS PRIOR TO ANY EXCAVATION, AS FOLLOWS:
KANSAS ONE-CALL 687-2470
THE CONTRACTOR MUST NOTIFY THE FOLLOWING IN CASE OF AN EMERGENCY:
AT&T 1-800-246-8464
BLACK HILLS ENERGY 1-800-694-8989
CITY OF WICHITA WATER & SEWER 1-316-219-8921
CITY OF WICHITA STORMWATER 1-316-268-4090
CITY OF WICHITA TRAFFIC 1-316-268-4034
COX COMMUNICATIONS 1-888-249-3530
KANSAS GAS SERVICE 1-888-482-4950
EVERGY 1-800-544-4857
- UTILITY SERVICE LINES, POLES, ETC. ARE TO BE ADJUSTED AS NECESSARY BY OTHERS PRIOR TO CONSTRUCTION UNLESS THE PLANS SPECIFICALLY CALL FOR THEIR ADJUSTMENT BY THE CONTRACTOR OR UNLESS THE PLANS SPECIFICALLY IDENTIFY A UTILITY TO BE ADJUSTED BY ITS OWNER DURING CONSTRUCTION. EXISTING UTILITIES AND THEIR LOCATION, AS SHOWN ON THE PLANS, REPRESENT THE BEST INFORMATION OBTAINABLE FOR DESIGN. THE CONTRACTOR WILL BE REQUIRED TO WORK AROUND EXISTING UTILITIES WITHIN THE RIGHT-OF-WAY WHICH DO NOT CONFLICT WITH PROPOSED CONSTRUCTION.
- RUBBLE FROM THE REMOVAL OF MISCELLANEOUS STRUCTURES AND EXCESS EXCAVATION WHICH IS TO BE WASTED SHALL BE DISPOSED OF ON SITES TO BE PROVIDED BY THE CONTRACTOR. THESE SITES SHALL BE APPROVED BY THE ENGINEER AS TO SUITABILITY, APPEARANCE AND SITE LOCATION. LOCATIONS, IN THE OPINION OF THE ENGINEER, THAT WILL LEAVE AN UNSIGHTLY APPEARANCE WILL NOT BE APPROVED. ALL DISPOSAL SITES MUST BE APPROVED BY THE KANSAS DEPARTMENT OF HEALTH AND ENVIRONMENT. MATERIAL EITHER STOCKPILED OR DISPOSED OF IN A FLOOD PLAIN WILL REQUIRE A KANSAS STATE BOARD OF AGRICULTURE PERMIT. ANY MATERIAL DUMPED IN WATERS OF THE UNITED STATES OR WETLANDS IS SUBJECT TO U.S. CORPS OF ENGINEERS PERMITTING REGULATIONS. ANY MATERIAL BURIED OR STOCKPILED BEYOND APPROVED CONSTRUCTION LIMITS WILL REQUIRE ADDITIONAL ARCHAEOLOGICAL INVESTIGATIONS UNLESS BURIED IN A PREVIOUSLY APPROVED BORROW LOCATION.
- TREES AND SHRUBS IN PUBLIC RIGHT-OF-WAY WHICH ARE IN DIRECT CONFLICT WITH PROPOSED NEW CONSTRUCTION SHALL BE REMOVED BY THE CONTRACTOR WITH THE CITY ENGINEER'S APPROVAL. TREES AND SHRUBS WHICH ARE NOT IN DIRECT CONFLICT WITH PROPOSED NEW CONSTRUCTION SHALL BE SAVED AND PROTECTED FROM DAMAGE.
- THE CONTRACTOR SHALL GIVE ALL PROPERTY OWNERS AND/OR TENANTS OF DEVELOPED PROPERTY ADJUTING THE CONSTRUCTION OF THIS PROJECT A MINIMUM OF TEN (10) DAYS NOTICE PRIOR TO START OF CONSTRUCTION.
- THE CONTRACTOR SHALL BE RESPONSIBLE FOR PRESERVING PROPERTY IRONS. THE CONTRACTOR WILL BE REQUIRED TO RE-ESTABLISH ANY PROPERTY IRONS WHICH ARE DAMAGED OR DESTROYED BY HIS CONSTRUCTION OPERATIONS. SUCH IRONS SHALL BE RE-ESTABLISHED BY A LICENSED LAND SURVEYOR IN ACCORDANCE WITH STATE LAWS.
- THE ENGINEERING DIVISION SHALL FIELD LOCATE WATER VALVES ONE TIME DURING CONSTRUCTION WHEN REQUESTED BY THE CONTRACTOR. IT SHALL BE THE CONTRACTOR'S RESPONSIBILITY TO PRESERVE SUCH FIELD LOCATIONS DURING THE CONSTRUCTION PROCESS. WATER VALVES, VALVE BOXES OR FIRE HYDRANTS DAMAGED DURING CONSTRUCTION SHALL BE REPAIRED BY CONTRACTOR AT HIS OWN EXPENSE. VALVE BOXES AND WATER METERS WITHIN THE PROJECT LIMITS SHALL BE ADJUSTED TO MATCH FINAL GRADES BY THE CONTRACTOR.
- THE CONTRACTOR SHALL NOTIFY THE CONSULTANT ENGINEER AND DAWNITA REINHARDT WITH THE CITY AT 316-268-4574 WITH THE CITY OF WICHITA WITH THE ANTICIPATED CONSTRUCTION START DATE AND NOTIFY THEM OF PROJECT COMPLETION.
- IF TRAFFIC WILL BE IMPACTED BY CONSTRUCTION, A TRAFFIC CONTROL PLAN MUST BE SUBMITTED AND APPROVED BY THE CITY TRAFFIC ENGINEER AT TRAFFIC@WICHITA.GOV BEFORE CONSTRUCTION CAN BEGIN. THE CONTRACTOR SHALL BE RESPONSIBLE FOR ALL TRAFFIC CONTROL MEASURES TO FACILITATE CONSTRUCTION. ALL CONSTRUCTION ZONE MARKINGS AND SIGNAGE SHALL CONFORM TO THE LATEST VERSION OF THE MANUAL ON UNIFORM TRAFFIC CONTROL DEVICES (MUTCD) AS PUBLISHED BY THE US DEPT. OF TRANSPORTATION, FEDERAL HIGHWAY ADMINISTRATION. ALL COSTS ASSOCIATED WITH CONSTRUCTION MARKINGS AND SIGNAGE SHALL BE THE CONTRACTORS RESPONSIBILITY.
- ALL ELEVATIONS SHOWN ARE NAVD 88.
- ALL AREAS DISTURBED DURING CONSTRUCTION THAT WILL NOT BE UNDER PROPOSED PAVEMENT SHALL BE RESTORED TO MATCH EXISTING CONDITIONS.
- ANY SIDEWALK, DRIVE APPROACH, OR STREET PAVEMENT REMOVED TO CONSTRUCT PROJECT MUST HAVE A PAVEMENT CUT PERMIT AND BE REPLACED BY THE CITY CONTRACTOR. PERMITS CAN BE OBTAINED BY CALLING 316-268-4501 OR 316-268-4480.
- CITY MAINTENANCE OF STORM SEWER ENDS AT THE LAST STRUCTURE IN THE EASEMENT OR RIGHT-OF-WAY.
- A PORTION OF EXCESS EXCAVATED MATERIAL SHALL BE MOUNDED AROUND MANHOLES WHICH EXTEND MORE THAN ONE (1) FOOT ABOVE THE EXISTING GROUND. SUCH MOUND SHALL BE CONSTRUCTED WITH NEW DEVELOPMENT A SIX (6) FOOT DIAMETER FLAT TOP WITH 4 TO 1 SIDE SLOPES DOWN TO THE ORIGINAL GROUND. THE ELEVATION OF THE FLAT TOP OF THE MOUND SHALL BE 0.4 FOOT BELOW THE TOP TO THE MANHOLE.
- CONTRACTOR SHALL LIMIT THE EXTENT OF TRENCH OPENINGS OVERNIGHT AND WEEKENDS TO LESS THAN 50 FEET.
- THE INSPECTING FIRM SHALL SUBMIT TO THE CITY STORMWATER MAINTENANCE DIVISION A DIGITAL COPY OF THE CITY INSPECTION OF THE CONDUITS AND STRUCTURES FOLLOWING CONSTRUCTION. THE DIGITAL FILE FORMATION SHALL BE COMPATIBLE WITH THE CITY INPUT TEMPLATE. A COPY OF THE TEMPLATE IS AVAILABLE UPON REQUEST AT 316-268-4090.
- THE CONTRACTOR SHALL PROTECT FROM DAMAGE AND SUPPORT EXISTING UTILITIES THROUGH CONSTRUCTION AS APPROVED BY THE UTILITY OWNER AND THE ENGINEER AT THE CONTRACTORS EXPENSE.
- THE CONTRACTOR SHALL RESTORE ALL DITCHES, SWALES, ROAD SHOULDERS, ENTRANCES AND BANK LINES TO THEIR ORIGINAL SLOPES AND GRADES EXCEPT AS SHOWN OTHERWISE.
- THE CONTRACTOR SHALL USE BEST MANAGEMENT PRACTICES (BMP'S) TO PREVENT ERODED SOIL FROM ENTERING DITCHES, CULVERTS AND DRAINAGE AREAS. THE CONTRACTOR SHALL FOLLOW THE INTENT OF THE BMP'S WHICH ACT AS A GUIDELINE.
- EACH BIDDER SHALL VISIT THE SITE OF THE PROJECT BEFORE SUBMITTING A PROPOSAL IN ORDER TO BECOME BETTER INFORMED OF THE EXISTING FIELD CONDITIONS AND OBSTACLES WHICH MIGHT BE ENCOUNTERED DURING CONSTRUCTION. EACH BIDDER SHOULD UNDERSTAND THAT NO ADDITIONAL COMPENSATION WILL BE AWARDED FOR EXTRA WORK THAT SHOULD HAVE BEEN EVALUATED PRIOR TO BIDDING.
- THE PRECAST MANUFACTURER SHALL PROVIDE A SEALED DESIGN DETAIL FOR ALL PRECAST ITEMS USED ON THE PROJECT TO INSURE THE INTENT OF THE PLANS ARE MET.
- BACKFILL SAND FLUSH & VIBRATE ALL UTILITIES UNDER PAVEMENT. ALL TRENCHING AND PIPE EMBEDMENT TO BE PER CITY OF WICHITA STANDARD SPECIFICATIONS AND SPECIAL PROVISIONS.
- ALL EXCAVATION FROM PIPE AND STRUCTURE REMOVAL TO BE BACKFILLED IN 6" LIFTS AND COMPACTED TO 95% OF STANDARD PROCTOR ASTM D698. FILL MATERIAL TO BE APPROVED BY PROJECT ENGINEER.
- MAINTAIN A MINIMUM OF 10-FOOT HORIZONTAL SEPARATION BETWEEN ALL WATER LINES (MAINS, SERVICES, AND FIRE HYDRANTS), AND ALL SANITARY SEWER LINES (MAINS, SERVICES, AND MANHOLES). ALL SEPARATION DISTANCES ARE TO BE MEASURED FROM EDGE-TO-EDGE AT THE CLOSEST POINT.
- MAINTAIN A MINIMUM OF 2-FOOT VERTICAL SEPARATION BETWEEN ALL WATER LINES (MAINS AND SERVICES) AND ALL GRAVITY SANITARY SEWER LINES (MAINS, SERVICES, AND MANHOLES). ALL SEPARATION DISTANCES ARE TO BE MEASURED FROM EDGE-TO-EDGE, AT THE CLOSEST POINT.
- MAINTAIN A MINIMUM OF 2-FOOT VERTICAL SEPARATION BETWEEN ALL WATER LINES (MAIN AND SERVICES) AND ALL PRESSURIZED SANITARY SEWER LINES (FORCED MAINS AND SERVICES) AT CROSSINGS. WATERLINES MUST ALWAYS BE PLACED ABOVE PRESSURIZED SANITARY SEWER LINES WHERE THEY CROSS. ALL SEPARATION DISTANCES ARE TO BE MEASURED FROM EDGE-TO-EDGE, AT THE CLOSEST POINT.

STORM SEWER IMPROVEMENTS TO SERVE Popeyes A PORTION OF LOT 6, BLOCK A MAIZE AND 29TH 3166 N Maize Rd COMMERCIAL ADDITION CITY OF WICHITA, KANSAS

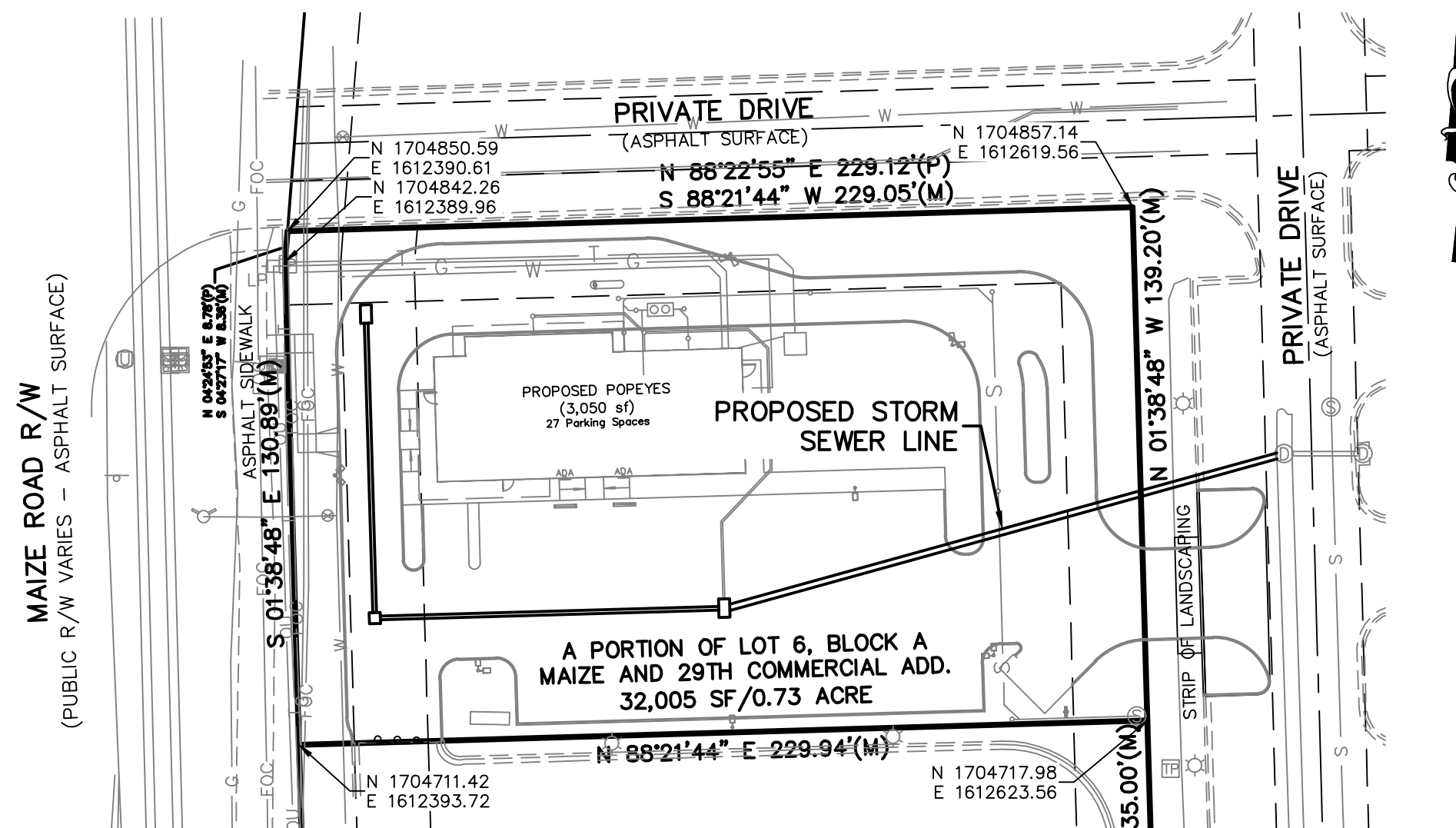
GARY JANZEN, P.E. CITY ENGINEER
PROJECT NUMBER
2023--000806PPD (53030970)

Date: 2023-10-03
Inspector: A. Thompson
Design/Inspecting Firm: Kaw Valley Engineering, Inc.
Contractor:
Subcontractor: Sooter Excavating Inc
Built in general conformance to construction plans, except where noted on plans.



VICINITY MAP

NOT TO SCALE



INDEX TO SHEETS

- TITLE SHEET
- SWS LINE A PLAN & PROFILE, DEMO
- EROSION CONTROL PLAN
- STANDARD DETAILS
- GRATE INLET
- CURB & INLET PROTECTION DETAIL
- SILT FENCE BARRIER DETAIL
- STRAW BALE BARRIER DETAIL
- STREET IMPROVEMENT PROJECTS
- SUBDIVISION DEVELOPMENT PROCESS
- PLAT

Stormwater Certification:
New Development

Stormwater Permit # SWO2023-0023
NOI Permit # _____/N/A_____

These construction plans were prepared in accordance with the current Stormwater Management Regulations as set forth in the City of Wichita's Stormwater Management Ordinance 16.32 and the policies/guidelines presented in the Wichita/Sedgwick County Stormwater Manual.

Disturbed Area = 32,005 SF (0.73 ACRES ±)
Water Quality Treatment: OFF SITE BMP PROGRAM
Downstream Channel Protection: N/A
Detention: N/A
The BMP used for this development is: OFF SITE BMP PROGRAM

APPROVED AS NOTED
BY WICHITA PUBLIC WORKS ENGINEERING
AND STORMWATER DIVISION

Engineering Approved by Shawn Mellies 04/07/2023

Stormwater Approved by Joe Hickle 04/07/2023

NOTE TO CONTRACTORS

Inspection and testing for this project is to be provided by a Licensed Consulting Engineering Firm under contract with the Owner/Developer. Said inspection to be in accordance with the City of Wichita standard construction engineering practices and certified by a Licensed Professional Engineer in the state of Kansas. No work shall be performed the Contractor without such inspection nor shall any work be commenced without written authorization by City Engineering. All Construction and Materials shall comply with the current City of Wichita Specifications and Standards and Special Provisions. (on file and available at Wichita.gov).

An approved copy of these plans signed by City staff are required on-site.

SAFETY NOTICE TO CONTRACTOR
IN ACCORDANCE WITH GENERALLY ACCEPTED CONSTRUCTION PRACTICES, THE CONTRACTOR WILL BE SOLELY AND COMPLETELY RESPONSIBLE FOR CONDITIONS OF THE JOB SITE, INCLUDING SAFETY OF ALL PERSONS AND PROPERTY DURING PERFORMANCE OF THE WORK. THIS REQUIREMENT WILL APPLY CONTINUOUSLY AND NOT BE LIMITED TO NORMAL WORKING HOURS.

WARRANTY / DISCLAIMER
THE DESIGNS REPRESENTED IN THESE PLANS ARE IN ACCORDANCE WITH ESTABLISHED PRACTICES OF CIVIL ENGINEERING FOR THE DESIGN FUNCTIONS AND USES INTENDED BY THE OWNER AT THIS TIME. HOWEVER, NEITHER KAW VALLEY ENGINEERING, INC NOR ITS PERSONNEL CAN OR DO WARRANTY THESE DESIGNS OR PLANS AS CONSTRUCTED, EXCEPT IN THE SPECIFIC CASES WHERE KAW VALLEY ENGINEERING PERSONNEL INSPECT AND CONTROL THE PHYSICAL CONSTRUCTION ON A CONTEMPORARY BASIS AT THE SITE.

BENCHMARKS

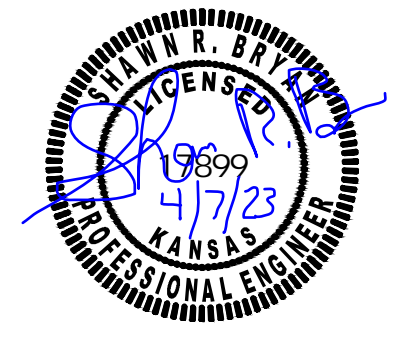
DATUM BENCHMARK:
VERTICAL DATUM IS NAVD 88 DERIVED FROM USING THE SEDGWICK COUNTY NTRIP NETWORK, ORTHOMETRIC HEIGHT WAS DETERMINED USING THE GEIOD 18 (CONUS) MODEL. UNITS ARE U.S. SURVEY FEET.

BENCHMARKS:
BM #61: CHISELED SQUARE AT BACK OF CURB, 25 FEET ± EAST AND 10 FEET ± NORTH OF THE SOUTHEAST CORNER OF LOT 6. ELEV=1356.90

THE COORDINATES PROVIDED IN THESE PLANS ARE FOR INFORMATION AND CHECKING PURPOSES ONLY. IT IS THE CONTRACTOR'S RESPONSIBILITY TO CALCULATE CONSTRUCTION STAKING COORDINATES ACCORDING TO THE DIMENSIONS SHOWN ON THESE PLANS. CONTRACTOR SHALL VERIFY THE ACCURACY OF THE COORDINATES SHOWN BEFORE CONSTRUCTION.

THIS PLAN SHEET IS PART OF AN OVERALL KAW VALLEY ENGINEERING PLAN SET FOR THE SPECIFIC IMPROVEMENTS CONTEMPLATED THEREIN. AS SUCH, THE INFORMATION REFLECTED HEREIN SHOULD ONLY BE INTERPRETED WITHIN THE CONTEXT OF THE COMPLETE PLAN SET.

APRIL 2023

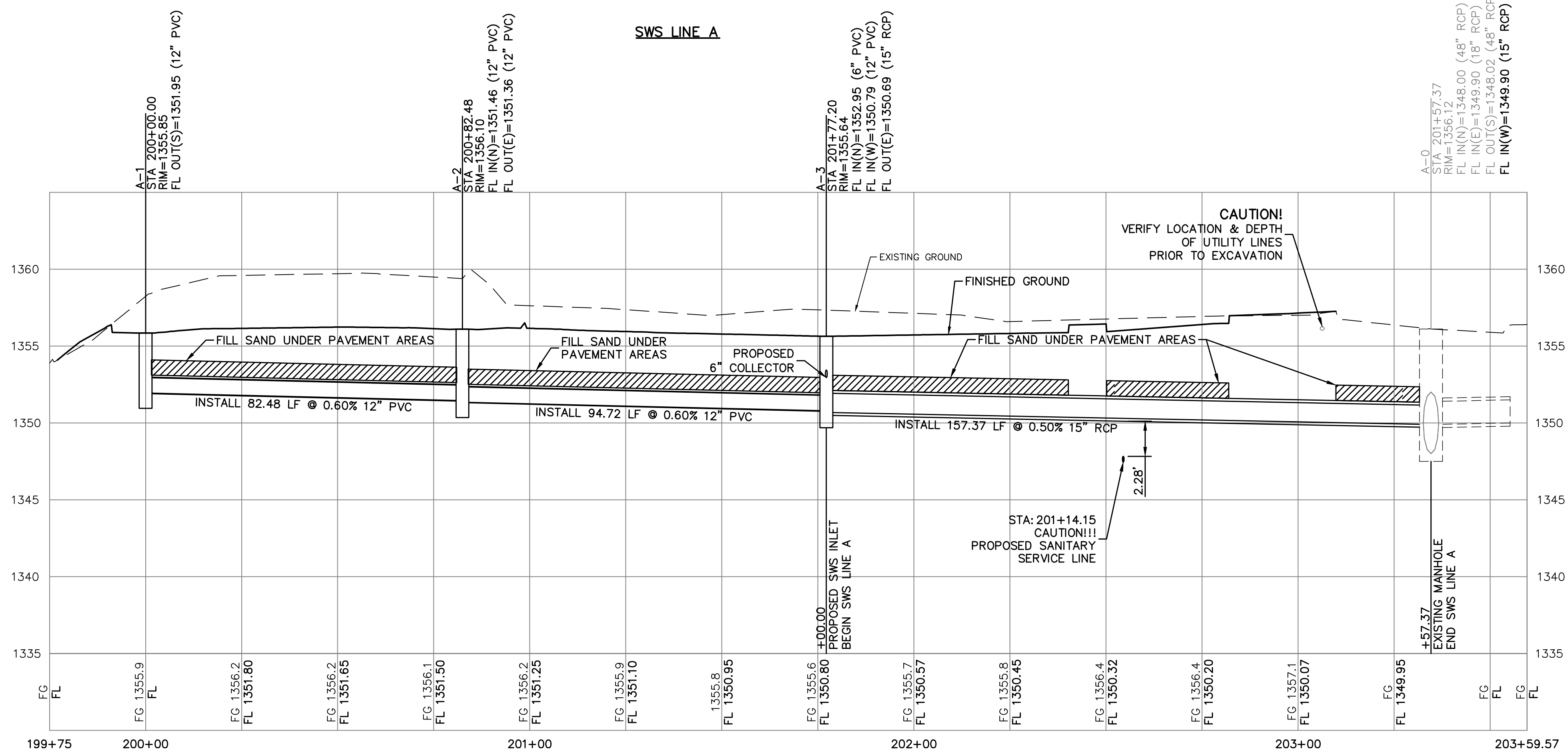
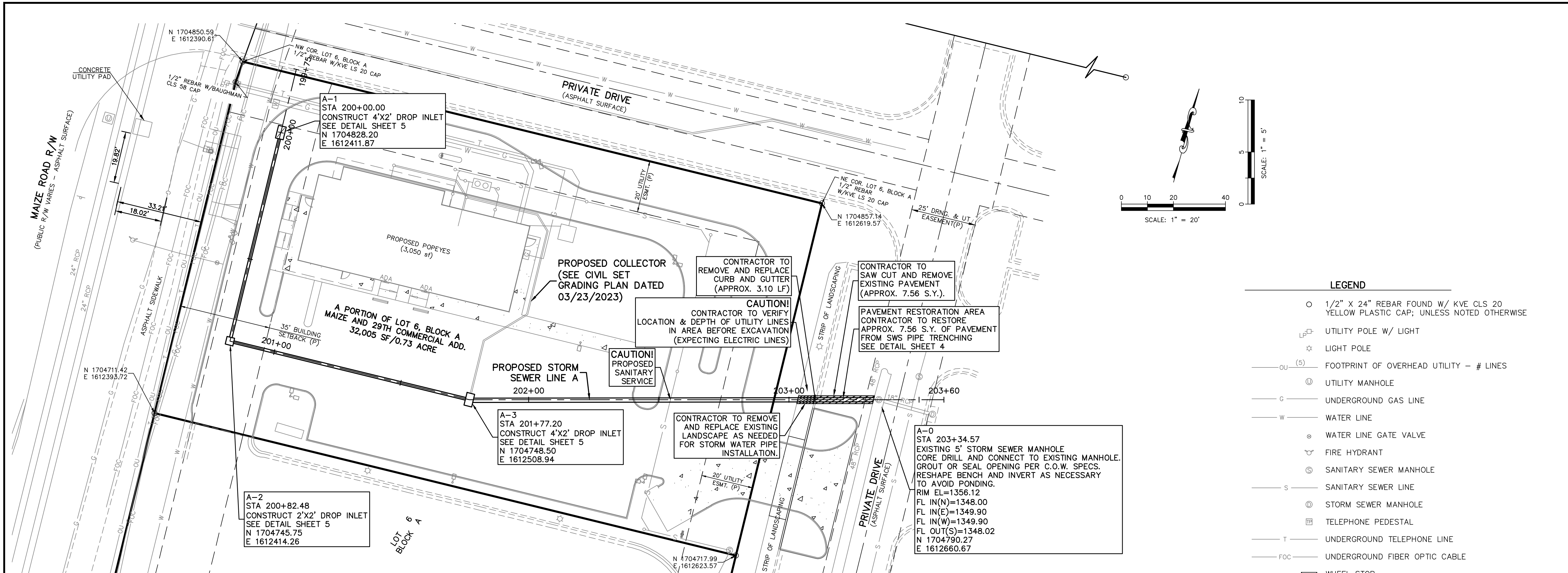


PROJ. NO. G22_2450 DSN: SRB SHAWN R. BRYAN
CFN: 2450DTS DWN: CS ENGINEER
KS # 17899

200 N. EMPORIA, SUITE 100
WICHITA, KANSAS 67202
PH. (316) 440-4304 | FAX (316) 440-4309
wh@kvenng.com | www.kvenng.com

KAW VALLEY ENGINEERING

KAW VALLEY ENGINEERING, INC., IS AUTHORIZED TO OFFER ENGINEERING SERVICES BY KANSAS STATE CERTIFICATE OF AUTHORIZATION # E-113. EXPIRES 12/31/22



THE COORDINATES PROVIDED IN THESE PLANS ARE FOR INFORMATION AND CHECKING PURPOSES ONLY. IT IS THE CONTRACTOR'S RESPONSIBILITY TO CALCULATE CONSTRUCTION STAKING COORDINATES ACCORDING TO THE DIMENSIONS SHOWN ON THESE PLANS. CONTRACTOR SHALL VERIFY THE ACCURACY OF THE COORDINATES SHOWN IN THE TABLE HEREON BEFORE CONSTRUCTION.

THIS PLAN SHEET IS PART OF AN OVERALL KAW VALLEY ENGINEERING PLAN SET FOR THE SPECIFIC IMPROVEMENTS CONTEMPLATED THEREIN. AS SUCH, THE INFORMATION REFLECTED HEREIN SHOULD ONLY BE INTERPRETED WITHIN THE CONTEXT OF THE COMPLETE PLAN SET.

PROJ. NO.	G22 2450
DESIGNER	SRB
DRAWN BY	CS
CFN	2450DPP
SHEET	2
REV	0

POPEYES
3166 NORTH MAIZE ROAD
WICHITA, KANSAS 67205

STORM SEWER IMPROVEMENTS
SWS LINE A PLAN & PROFILE, DEMO

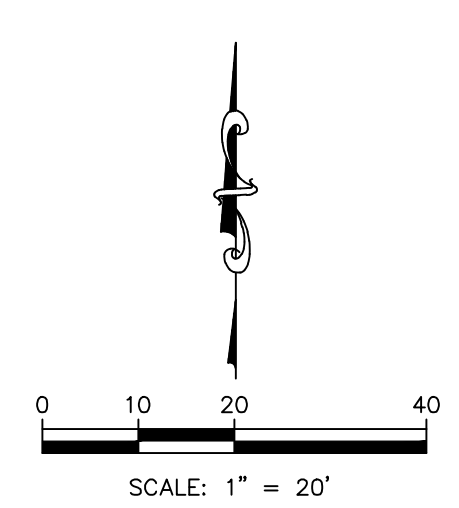
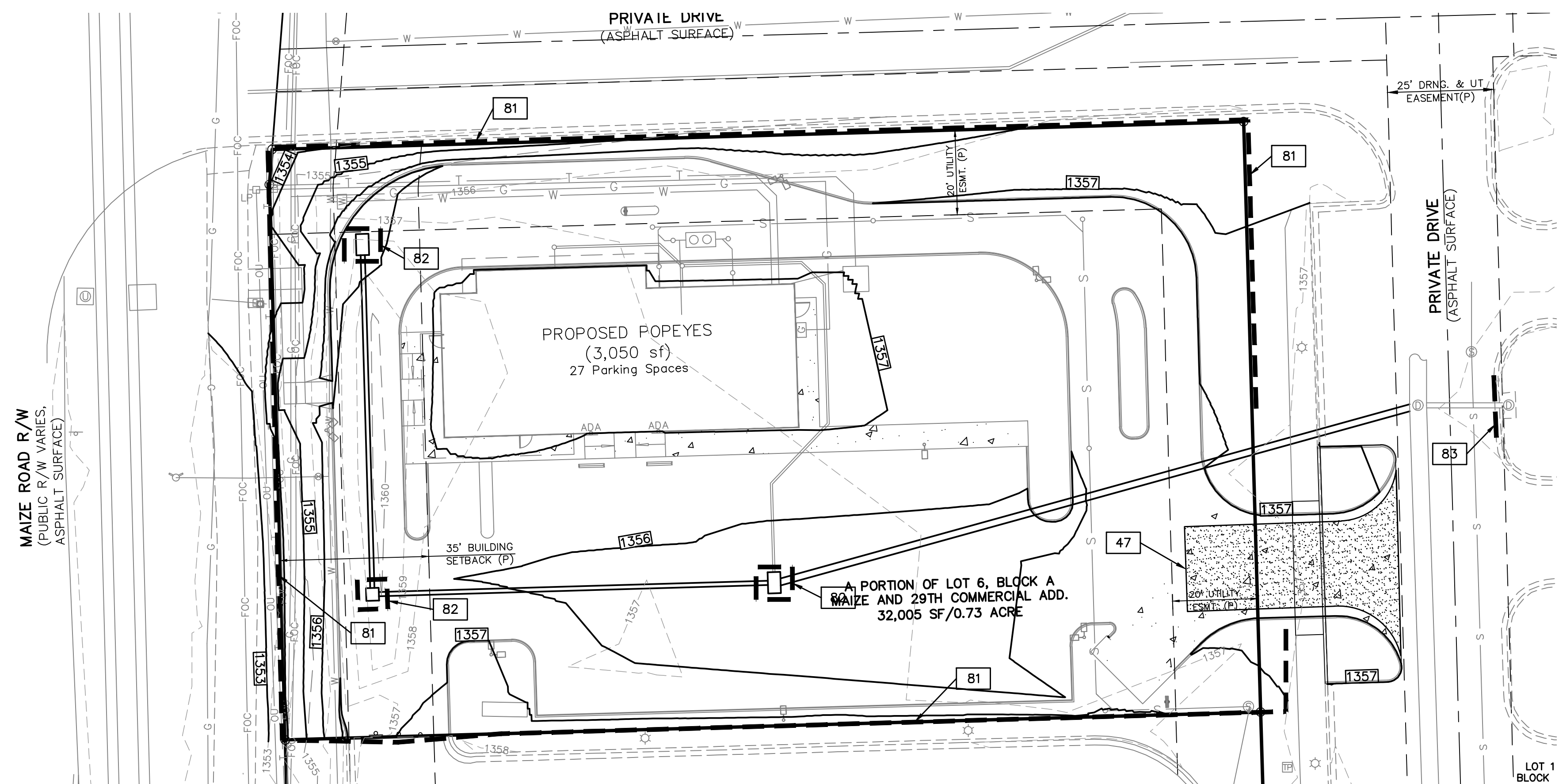
KAW VALLEY ENGINEERING
KAW VALLEY ENGINEERING, INC. IS AUTHORIZED TO OFFER ENGINEERING SERVICES BY KANSAS STATE CERTIFICATE OF AUTHORIZATION # E-113. EXPIRES 12/31/22

200 N. EMPORIA, SUITE 100
WICHITA, KANSAS 67202
PH. (316) 440-4304 | FAX (316) 440-4309
www.kaveg.com | www.kaveg.com

SHAWN R. BRYAN
ENGINEER
KS # 17899

PROFESSIONAL ENGINEER
KANSAS
17899
4/7/23

REV	DATE	DESCRIPTION
0	04/07/23	INITIAL ISSUE
		DSN DWN CHK



EROSION & PROPOSED IMPROVEMENTS LEGEND:

- PROPOSED FINISHED GROUND CONTOUR (1' INTERVALS)
- EXISTING GROUND CONTOUR (1' INTERVALS)
- SILT FENCE (APPROX. 695 LF, INSTALL PER EROSION CONTROL DETAILS)
- SILT FENCE BARRIERS FOR AREA INLET (3 EA., INSTALL PER EROSION CONTROL DETAILS)
- CURB INLET PROTECTION (1 EA., INSTALL PER EROSION CONTROL DETAILS)
- DETAILS – SEE DETAIL SHEET NO. 5 AND 6 FOR THE FOLLOWING DETAILS
- 47** CONSTRUCTION ENTRANCE (PER CITY OF WICHITA STANDARDS)
- 81** SILT FENCE (PER CITY OF WICHITA STANDARDS)
- 82** SILT FENCE BARRIER FOR AREA INLETS (PER CITY OF WICHITA STANDARDS)
- 83** CURB INLET PROTECTION (PER CITY OF WICHITA STANDARDS)

GENERAL NOTES:

1. PROPERTY LINE IS LIMITS OF CONSTRUCTION EXCEPT AS SHOWN.
2. THE CONTRACTOR SHALL INSTALL EROSION CONTROL MEASURES AS SHOWN ON THE DRAWINGS PRIOR TO BEGINNING EARTHWORK OPERATIONS.
3. THE CONTRACTOR SHALL MAINTAIN ALL SILT CONTROL MEASURES DURING CONSTRUCTION.
4. ALL SILT SHALL REMAIN ON SITE AND SURROUNDING STREETS SHALL BE KEPT CLEAR OF ALL MUD AND DEBRIS.
5. A SEDIMENTATION BARRIER IS TO BE INSTALLED AS SHOWN.
6. ACCUMULATED SEDIMENT SHALL BE REMOVED AND THE SEDIMENTATION BARRIERS MAINTAINED AS NEEDED TO PREVENT SEDIMENTATION BYPASS OF THE BARRIER.
7. SLOPES ARE TO BE LEFT IN A ROUGH CONDITION DURING GRADING.
8. CURB INLET SEDIMENTATION BARRIERS ARE TO BE INSTALLED AROUND INLETS AND WEIRS WHERE SEDIMENTATION IS A CONCERN. INLET BARRIERS SHALL BE EITHER BLOCK AND GRAVEL, OR SECURED STRAW BALES, OR SILT FENCE.
9. SEDIMENT IS TO BE REMOVED FROM STORM WATER DRAINAGE SYSTEMS.
10. CONTRACTOR IS RESPONSIBLE FOR INSTALLING ANY ADDITIONAL EROSION CONTROL AS HE/SHE DEEMS NECESSARY.

11. THE CONTRACTOR SHALL PROVIDE ALL MATERIALS, TOOLS, EQUIPMENT AND LABOR AS NECESSARY TO INSTALL AND MAINTAIN ADEQUATE EROSION AND SILTATION CONTROLS REQUIRED TO PREVENT SOIL EROSION FROM LEAVING THE PROJECT SITE. IT SHALL BE THE CONTRACTOR'S SOLE RESPONSIBILITY TO ENSURE THAT METHODS UTILIZED ARE ADEQUATE AND COMPLY WITH REQUIREMENTS OF THE SPECIFICATIONS AND GOVERNMENTAL AGENCIES HAVING JURISDICTION OVER THE WORK.
12. TEMPORARY SEDIMENT FENCE/STRAW BALES TO REMAIN UNTIL ADEQUATE VEGETATION IS ESTABLISHED.
13. MUD AND DEBRIS SHALL BE CLEANED UP AT THE CONCLUSION OF EACH WORKING DAY, OR AFTER EACH RAINFALL IF SILT IS PRESENT.
14. INSPECTION, MAINTENANCE AND REPAIR OF EROSION CONTROL DEVICES SHALL BE ON GOING THROUGHOUT THE LIFE OF BUILDING CONSTRUCTION TO KEEP THE DEVICES IN OPERABLE CONDITION AT ALL TIMES. ADDITIONAL MEASURES SHALL BE INSTALLED AS REQUIRED BY ACTUAL FIELD CONDITIONS AND/OR GOVERNING INSPECTION AGENCIES.
15. INSTALL CONSTRUCTION ENTRANCE AT ANY POINT WHERE TRAFFIC WILL BE ENTERING OR LEAVING THE SITE AND AS SHOWN ON PLANS.
16. AT COMPLETION OF SITE GRADING AND OTHER RELATED CONSTRUCTION ACTIVITIES, ALL DISTURBED AREAS WITHIN THE PROJECT SITE SHALL BE SEEDED USING MULCH OR EQUIVALENT STABILIZING BMP, SODDED, OR LANDSCAPED AS SHOWN ON THE LANDSCAPE PLAN WITHIN 14 DAYS.

17. TOPSOIL IS TO BE PLACED IN AREAS UNSUITABLE FOR VEGETATIVE GROWTH.
18. STRIP TOPSOIL PRIOR TO EXCAVATION, STOCKPILE AND SPREAD ONTO DISKED SUBGRADE (4" MIN) A THICKNESS OF 4 INCHES.
19. THE CONTRACTOR SHALL HAVE THE RESPONSIBILITY FOR RESOLVING COMPLAINTS IN THE EVENT THAT COMPLAINTS OR DAMAGE CLAIMS ARE FILED DUE TO DAMAGES OCCURRING ADJACENT TO OR DOWNSTREAM FROM PROPERTY BY SEDIMENT RESULTING FROM EROSION ON THE PROJECT SITE.
20. GOOD HOUSEKEEPING PRACTICES SHALL BE MAINTAINED ON SITE TO KEEP SOLID WASTE FROM ENTRY INTO WATERS.
21. ALL FUELING FACILITIES PRESENT ON SITE SHALL ADHERE TO APPLICABLE FEDERAL AND STATE REQUIREMENTS CONCERNING UNDERGROUND STORAGE, ABOVE GROUND STORAGE AND DISPENSERS, INCLUDING SPILL PREVENTION, CONTROL AND COUNTER MEASURES.
22. RIGHT OF WAY TO BE STABILIZED AS REQUIRED BY APWA SECTION 2400.
23. EROSION CONTROL IS TO BE PLACED IN PHASING AS CONSTRUCTION PROGRESSES.
24. MINIMAL WASHING OF CONCRETE EQUIPMENT ALLOWED, CHUTE ETC. CONCRETE WASHOUT OF THE DRUM IS NOT ALLOWED. ANY PIT/WASHOUT AREA NEEDS TO BE MAINTAINED IN A NON-DISCHARGING MANNER AND ANY WASTE RESIDUE WILL NEED TO BE CLEANED OUT AND REMOVED AT THE END OF PROJECT.

25. CONTRACTOR/DEVELOPER IS RESPONSIBLE FOR HAVING LOT BUILDERS FOLLOW THE GUIDELINES OF "CONTROLLING EROSION WHEN BUILDING YOUR HOME" PROVIDED BY KANSAS DEPARTMENT OF HEALTH AND ENVIRONMENT.
26. EROSION CONTROL SEDIMENT FENCE TO BE INSTALLED 1'-0" BEHIND CURB & GUTTER UPON COMPLETION OF BACKFILL OF CURB IN ALL AREAS WHERE SLOPES FROM LOT DRAIN TOWARDS CURB. UPON COMPLETION OF FINAL GRADING THE TOES OF ALL EMBANKMENTS IN EXCESS OF TWO FEET IN HEIGHT WILL HAVE EROSION CONTROL SEDIMENT FENCE INSTALLED.

SAFETY NOTICE TO CONTRACTOR

IN ACCORDANCE WITH GENERALLY ACCEPTED CONSTRUCTION PRACTICES, THE CONTRACTOR SHALL BE SOLELY AND COMPLETELY RESPONSIBLE FOR CONDITIONS OF THE JOB SITE, INCLUDING SAFETY OF ALL PERSONS AND PROPERTY DURING PERFORMANCE OF THE WORK. THIS REQUIREMENT WILL APPLY CONTINUOUSLY AND NOT BE LIMITED TO NORMAL WORKING HOURS.

WARRANTY / DISCLAIMER

THE DESIGNS REPRESENTED IN THESE PLANS ARE IN ACCORDANCE WITH ESTABLISHED PRACTICES OF CIVIL ENGINEERING FOR THE DESIGN FUNCTIONS AND USES INTENDED BY THE OWNER AT THIS TIME. HOWEVER, NEITHER KAW VALLEY ENGINEERING, INC NOR ITS PERSONNEL CAN OR DO WARRANTY THESE DESIGNS OR PLANS AS CONSTRUCTED, EXCEPT IN THE SPECIFIC CASES WHERE KAW VALLEY ENGINEERING PERSONNEL INSPECT AND CONTROL THE PHYSICAL CONSTRUCTION ON A CONTEMPORARY BASIS AT THE SITE.

CAUTION – NOTICE TO CONTRACTOR

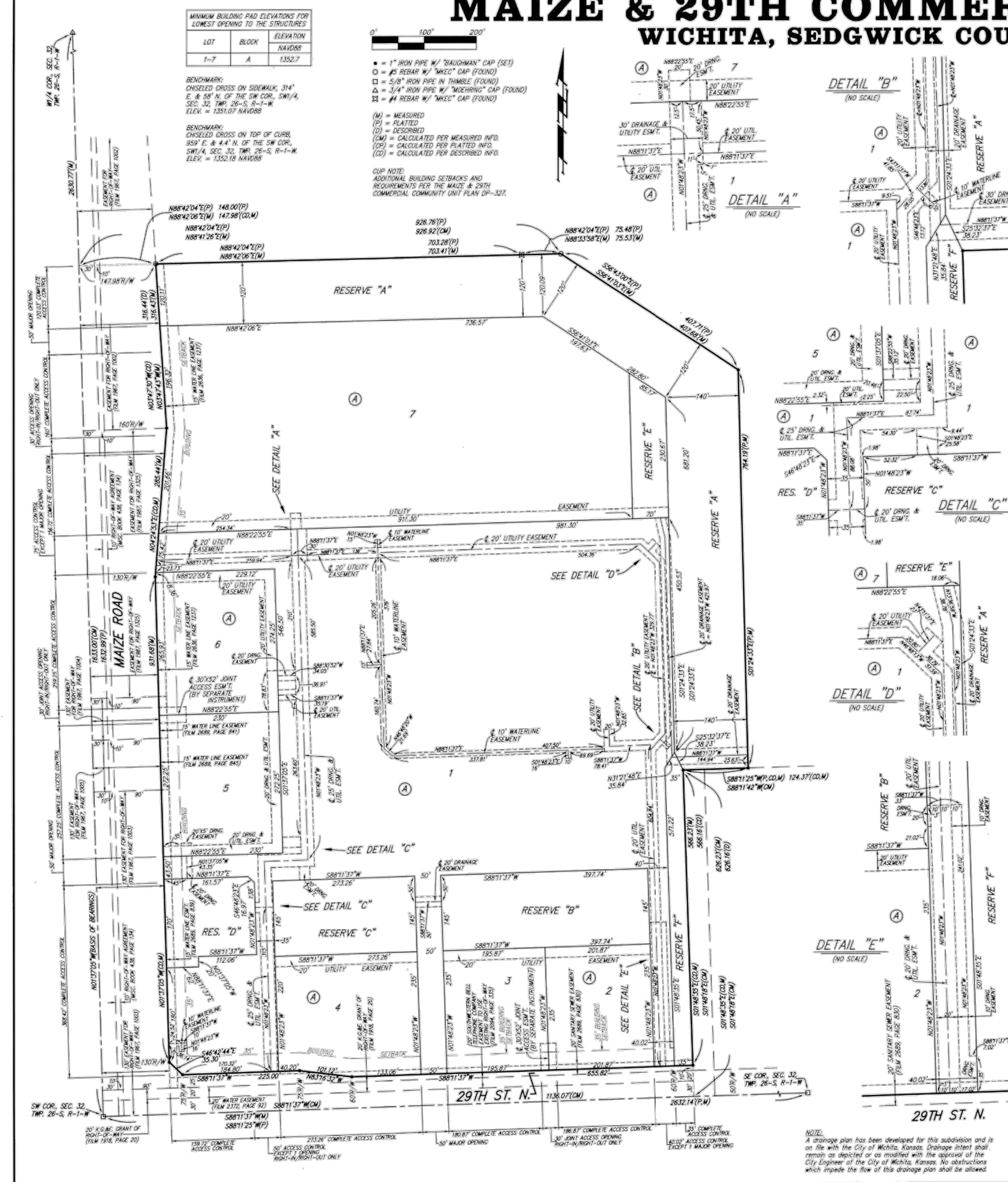
THE CONTRACTOR IS SPECIFICALLY CAUTIONED THAT THE LOCATION AND/OR ELEVATION OF EXISTING UTILITIES AS SHOWN ON THESE PLANS IS BASED ON RECORDS OF THE VARIOUS UTILITY COMPANIES AND, WHERE POSSIBLE, MEASUREMENTS TAKEN IN THE FIELD. THE INFORMATION IS NOT TO BE RELIED ON AS BEING EXACT OR COMPLETE. THE CONTRACTOR SHALL CALL THE APPROPRIATE UTILITY COMPANY AT LEAST 72 HOURS BEFORE ANY EXCAVATION TO REQUEST EXACT FIELD LOCATION OF UTILITIES. IT SHALL BE THE RESPONSIBILITY OF THE CONTRACTOR TO RELOCATE ALL EXISTING UTILITIES WHICH CONFLICT WITH PROPOSED IMPROVEMENTS SHOWN ON THE PLANS. **THE CONTRACTOR SHALL EXPOSE EXISTING UTILITIES AT LOCATIONS OF POSSIBLE CONFLICTS PRIOR TO ANY CONSTRUCTION.**

THIS PLAN SHEET IS PART OF AN OVERALL KAW VALLEY ENGINEERING PLAN SET FOR THE SPECIFIC IMPROVEMENTS CONTEMPLATED THEREIN. AS SUCH, THE INFORMATION CONTAINED MAY BE LIMITED AND SHOULD ONLY BE INTERPRETED WITHIN THE CONTEXT OF THE COMPLETE PLAN SET.

REV	DATE	DESCRIPTION
0	04/07/23	INITIAL ISSUE
		SRB
		CS
		DWN
		CHK

SHAWN R. BRYAN ENGINEER KS # 17899	
200 N. EMPORIA, SUITE 100 WICHITA, KANSAS 67202 PH. (316) 440-4304 FAX (316) 440-4309 info@kaveg.com www.kaveg.com	
KAW VALLEY ENGINEERING, INC., IS AUTHORIZED TO OFFER ENGINEERING SERVICES BY KANSAS STATE CERTIFICATE OF AUTHORIZATION # E-113. EXPIRES 12/31/24	
POPEYES 3166 NORTH MAIZE ROAD WICHITA, KANSAS 67205	
STORM SEWER IMPROVEMENTS EROSION CONTROL PLAN	
PROJ. NO.	G22 2450
DESIGNER	SRB
DRAWN BY	CS
CFN	2450DECP
SHEET	3
REV	0

MAIZE & 29TH COMMERCIAL ADDITION WICHITA, SEDGWICK COUNTY, KANSAS



State of Kansas) SS We, *Baughman Company, P.A.*, Surveyors in Sedgwick County and state do hereby certify that we have surveyed and plotted "MAIZE & 29TH COMMERCIAL ADDITION", Wichita, Sedgwick County, Kansas and that the accompanying plat is a true and correct exhibit of the property surveyed, described as the Southwest Quarter of Section 32, Township 26 South, Range 1 West of the 6th P.M., Sedgwick County, Kansas, EXCEPT a tract described as commencing at the southwest corner of the East Half of the South Half of said Southwest Quarter; thence N90°00'00"W (assumed) along the south line of said Southwest Quarter, 140.00 feet; thence N00°00'00"E, 626.16 feet; thence S90°00'00"E, 626.16 feet; thence S00°00'00"W, 626.16 feet; thence N90°00'00"W, 406.16 feet to the point of beginning, and EXCEPT a tract described as commencing at the southwest corner of the East Half of the South Half of said Southwest Quarter; thence N90°00'00"W (assumed) along the south line of said Southwest Quarter, 140.00 feet to the point of beginning, being the southwest corner of a tract of land recorded in the Register of Deeds Office on Warranty Deed in Film 12027, Page 248; thence along the south line of said Section, N90°00'00"W, 40 feet; thence N00°00'00"E, 626.16 feet; thence N90°00'00"E, 40 feet to the northwest corner of said Deed; thence S00°00'00"W, 626.16 feet along the west line of said Deed to the point of beginning, and EXCEPT that portion of said Southwest Quarter platted as Fox Ridge Addition, an Addition to Wichita, Sedgwick County, Kansas and Fox Ridge Second Addition, an Addition to Wichita, Sedgwick County, Kansas, all being subject to road rights-of-way of record.

Existing public easements and dedications being vacated by virtue of K.S.A. 12-512b, as amended.

Baughman Company, P.A.

Know all men by these presents that we, the undersigned, have caused the land in the surveyors certificate to be platted into Lots, a Block, Reserves, and Streets, to be known as "MAIZE & 29TH COMMERCIAL ADDITION", Wichita, Sedgwick County, Kansas. The utility easements are hereby granted as indicated for the construction and maintenance of all public utilities. The drainage and utility easements are hereby granted as indicated for drainage purposes and for the construction and maintenance of all public utilities. The drainage easements are hereby granted as indicated for drainage purposes. The waterline easements are hereby granted as indicated for the construction and maintenance of all public waterlines and related appurtenances. The streets are hereby dedicated to and for the use of the public. Reserve "A" is hereby reserved for landscaping, screening walls, fencing, berms, site lighting, open space, drainage purposes, and waterlines and related appurtenances as confined to easement. Site lighting shall be installed within the westerly and southerly 10 feet of Reserve "A". Reserve "A" shall be owned and maintained by the owner of Lot 1, Block A provided, however, that the undersigned, or the undersigned's successor in interest, may, in their discretion, deed a parcel of Reserve "A" to an owner or owners of an adjacent parcel, subject to the obligation to maintain such deeded parcel of said Reserve "A" in compliance with the provisions hereof and in compliance with the maintenance covenants of any applicable restrictive covenants and/or regulations. Reserves "B" and "C" shall be reserved for open space, landscaping, berms, lakes, and drainage purposes. Reserve "D" shall be reserved for open space, landscaping, berms, lakes, drainage purposes, a driveway appurtenant to the corresponding major access opening, and waterlines and related appurtenances as confined to easement. Reserve "E" shall be reserved for open space, landscaping, berms, lakes, drainage purposes, and utilities as confined to easements. Reserve "F" is hereby reserved for landscaping, screening walls, fencing, berms, site lighting, open space, drainage purposes, and sanitary sewer systems as confined to easements. Site lighting shall be installed within the westerly 10 feet of Reserve "F". Reserves "B", "C", "D" and "F" shall be owned and maintained by the owner of Lot 1, Block A. Reserve "E" shall be owned and maintained by the owner of Lot 7, Block A. Access controls shall be as depicted on the face of the plat and are hereby granted to the City of Wichita, Kansas. The Minimum Building Pad Elevations for the lowest opening to the structures shall be as indicated on the face of the plat.

Leo Marvin Rink Revocable Trust
Leo Marvin Rink, Trustee
 Vivian L. Rink, Trustee
 Vivian L. Rink Revocable Trust
Vivian L. Rink, Trustee
 Leo Marvin Rink, Trustee
Leo Marvin Rink, Trustee

Curtis W. Rink, Trustee
Karen S. Rink, Trustee

This plat of "MAIZE & 29TH COMMERCIAL ADDITION", Wichita, Sedgwick County, Kansas has been submitted to and approved by the Wichita-Sedgwick County Metropolitan Area Planning Commission, Wichita, Kansas.
 Dated this 21st day of FEBRUARY, 2013
 Wichita-Sedgwick County Metropolitan Area Planning Commission

David Dennis, Chair
John L. Schlegel, Secretary

This plat approved and all dedications shown hereon accepted by the City Council of the City of Wichita, Kansas, this 21st day of May, 2013.

Carl Brewer, Mayor
Karen Sublett, City Clerk

Reviewed in accordance with K.S.A. 58-2005 on this 21st day of May, 2013.

Tricia L. Robello, L.S. #1246
 Deputy County Surveyor
 Sedgwick County, Kansas

Entered on transfer record this 29th day of May, 2013.

Kelly B. Arnold, County Clerk

State of Kansas) SS This is to certify that this plat has been filed for record in the office of the Register of Deeds, this 21st day of MAY, 2013 at 2:26:30 o'clock P.M. and is duly recorded.

Bill Meek, Register of Deeds

Deputy
Buckingham, Deputy

State of Kansas) SS The foregoing instrument acknowledged before me, this 21st day of APRIL, 2013, by *Leo Marvin Rink and Vivian L. Rink, Trustees of the Leo Marvin Rink Revocable Trust and Vivian L. Rink and Leo Marvin Rink, Trustees of the Vivian L. Rink Revocable Trust*, on behalf of the trusts.

Judith M. Terhune, Notary Public
 My App'l. Exp. 11-7-13

State of Kansas) SS The foregoing instrument acknowledged before me, this 21st day of APRIL, 2013, by *Curtis W. Rink and Karen S. Rink, husband and wife*.

Judith M. Terhune, Notary Public
 My App'l. Exp. 11-7-13

EXISTING STAKEOUT RIGHT-OF-WAY AGREEMENT IN FAVOR OF HOPE ENGINEERING & SUPPLY CO. RECORDED IN MINN. BOOK 33, PAGE 257 AND #194041 CLOSING. CONTINUED OCCUPATION, POSSESSION AND USE RECORDED IN MINN. BOOK 352, PAGE 144. LAST ASSIGNED IN FAVOR OF HOPE ENGINEERING & SUPPLY CO. BY DEEDHELD LIMITED LIABILITY COMPANY. ASSIGNMENT OF INTERESTS RECORDED AS DOC #174M-PC: 2312749. RIGHT-OF-WAY DEEDS IN FAVOR OF HOPE INC. RECORDED IN FILM 0776, PAGE 3837 (CONTINUED PAGES) AND EQUIVALENTS IN A CUMULATIVE 90 FOOT WIDE EASEMENT. (Said easement 50 foot wide easement does NOT affect subject property and is NOT shown on the face of this plat). HOWEVER, SAID RIGHT-OF-WAY CONTRACT, (FILM 0776, PAGE 3837), DOES NOT SPECIFICALLY WAIVE THE STAKEOUT RIGHT-OF-WAY AGREEMENT IN FAVOR OF HOPE ENGINEERING & SUPPLY CO. DATED IN MINN. BOOK 33, PAGE 257. THIS DOCUMENT PURCHASES BASIS OF RIGHT-OF-WAY RECORDED ON FILM 2025, PAGE 2025 MAY REVOKE SAID STAKEOUT RIGHT-OF-WAY AGREEMENT IN FAVOR OF HOPE ENGINEERING & SUPPLY CO. AS IT APPLIES TO THIS PLAT, BUT THE ASSIGNMENT OF THE TRACT OF LAND TO BE RECORDED IS VAGUE AND OPEN TO INTERPRETATION.

Baughman Company, P.A.
 ENGINEERS | SURVEYORS | PLANNERS | LANDSCAPE ARCHITECTS

Inches

This digital plat record accurately reproduces in all details the original plat filed with the Sedgwick County Register of Deeds. Digitized under the supervision of Register of Deeds Bill Meek by Sedgwick County Geographic Information Systems.

Bill Meek, Register of Deeds
 Digitized version of original signature

PROJ. NO.	G22 2450
DESIGNER	SRB
DRAWN BY	CS
CFN	2450DET
SHEET	REV
11	0

POPEYES	3166 NORTH MAIZE ROAD	WICHITA, KANSAS 67205
STORM SEWER IMPROVEMENTS	PLAT	

REV	DATE	INITIAL	ISSUE	DESCRIPTION
0	04/07/23			

SRB	CS	DLN	CHK
-----	----	-----	-----

200 N. EMPORIA, SUITE 100
 WICHITA, KANSAS 67202
 PH. (316) 440-4304 | FAX (316) 440-4309
 www.kawvalley.com | www.kawvalley.com

KAW VALLEY ENGINEERING
 KAW VALLEY ENGINEERING, INC. IS AUTHORIZED TO OFFER ENGINEERING SERVICES BY KANSAS STATE CERTIFICATE OF AUTHORIZATION # E-113. EXPIRES 12/31/24