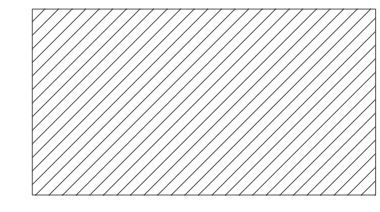
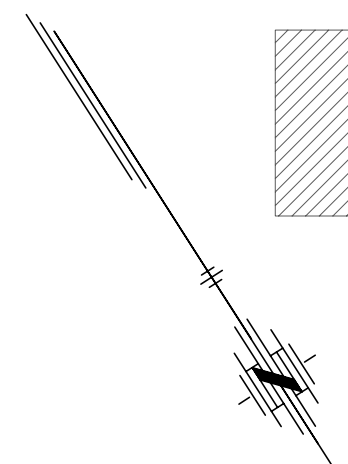
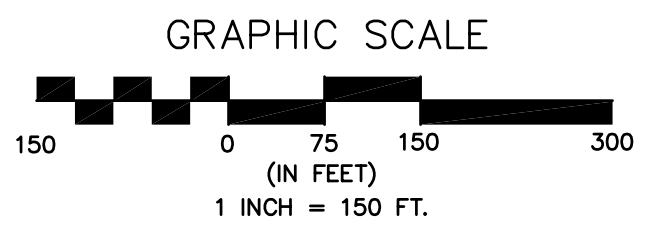
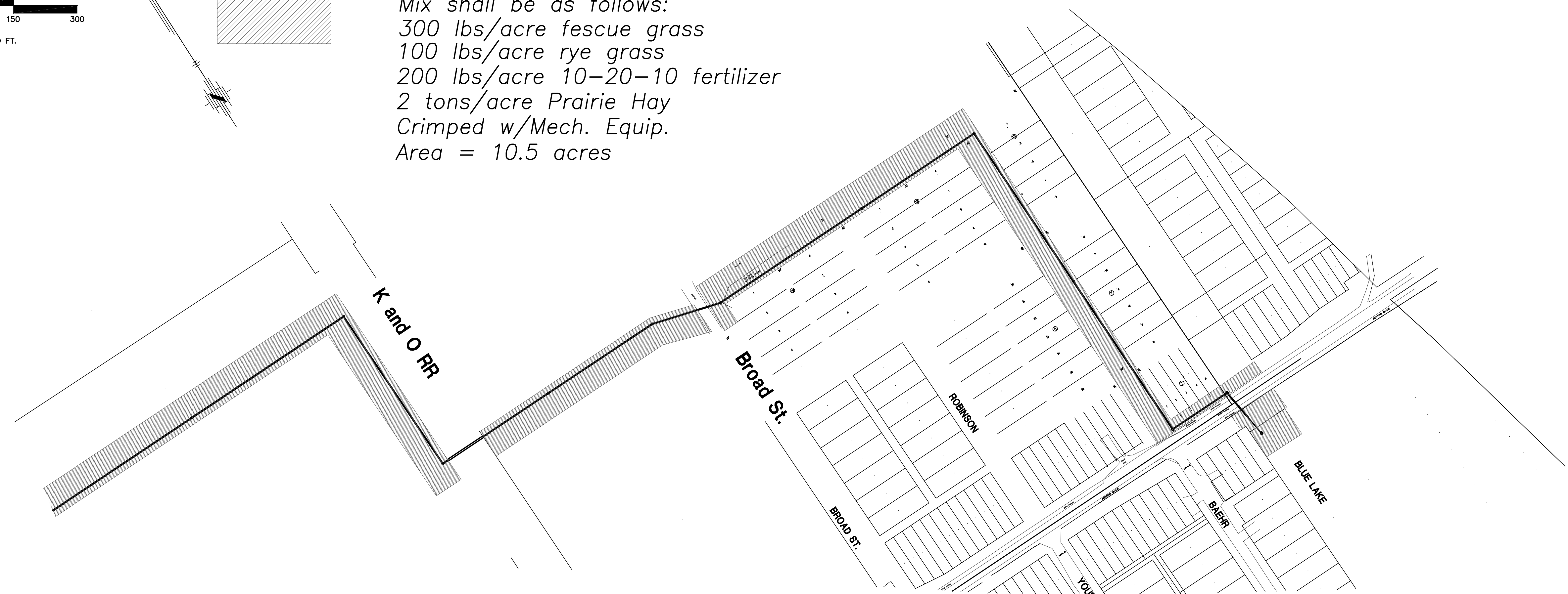


Contractor shall install Curlex Excelsior blanket in street r/w, ditch checks at 100 ft intervals in street r/w, and ditch checks at places of concentrated runoff flow that intersect the disturbed areas of project



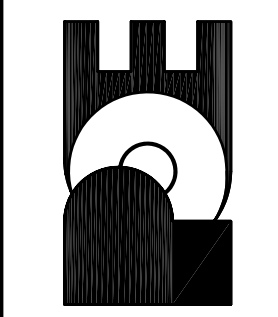
Contractor shall seed all disturbed areas.
 Mix shall be as follows:
 300 lbs/acre fescue grass
 100 lbs/acre rye grass
 200 lbs/acre 10-20-10 fertilizer
 2 tons/acre Prairie Hay
 Crimped w/Mech. Equip.
 Area = 10.5 acres



No.	Date	By	Approved	Revision
1	8/30/07	JMU	JMU	Revised Alignment August 2007
2				
3				

MAIN 22 SW INTERCEPTOR SEWER
 SANITARY SEWER IMPROVEMENTS
 STORMWATER POLLUTION PREVENTION PLAN
 CITY OF WICHITA, KANSAS
 JAMES L. ARNOUR, P.E. - CITY ENGINEER
 Proj.# 468-8361 O.C.A.# 622092

POE & ASSOCIATES, INC.
 CONSULTING ENGINEERS
 5940 E. Central, Suite 200 ■ Wichita, KS 67208-4252
 Phone 316/685-4114 ■ FAX 316/685-4444



FINAL
 Designed By: J. Ubert / B. Kullio
 Drawn By: B. Kullio
 P.O. Job No.: 7805
 Date: August 2007