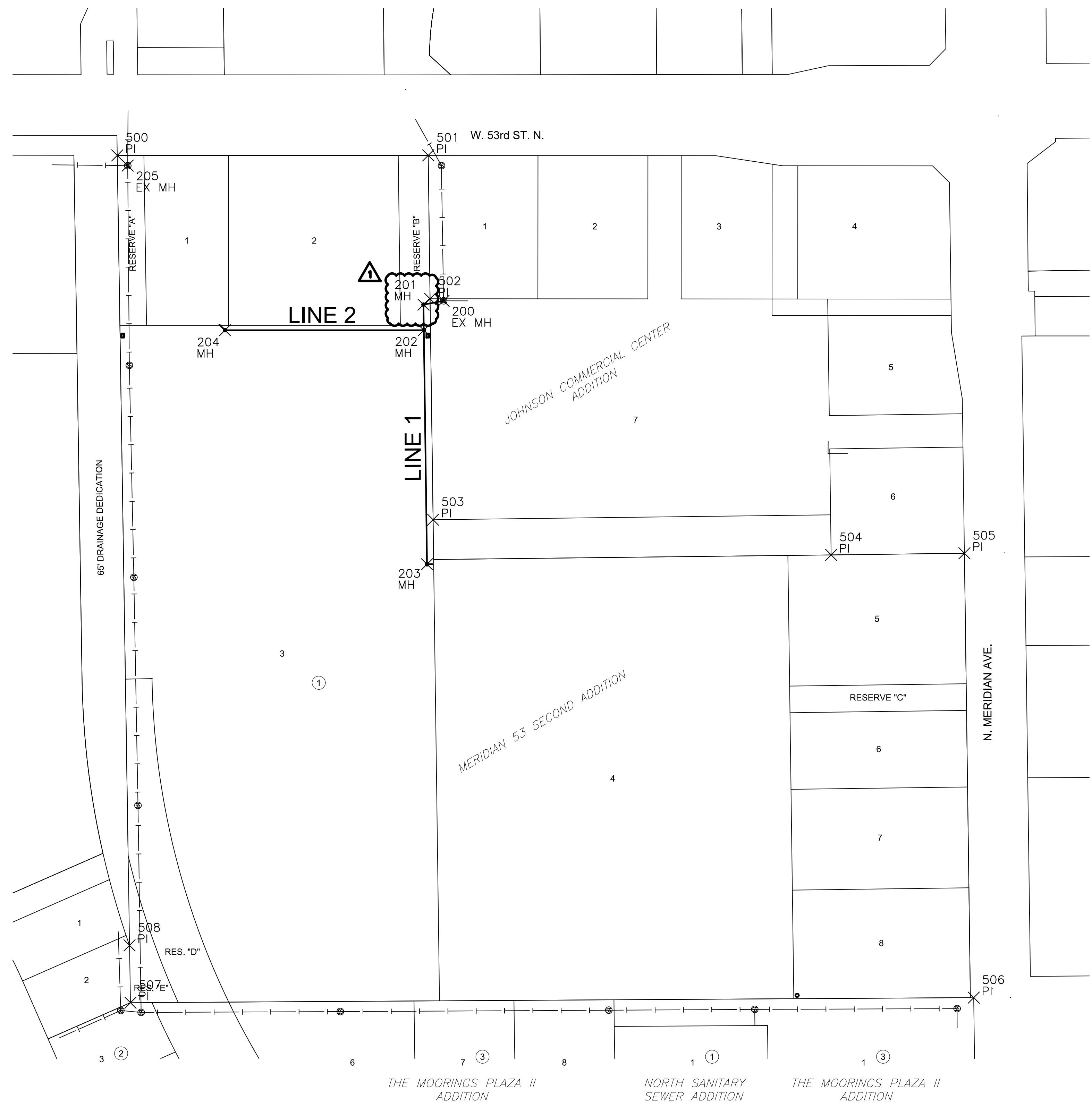


J:\PROJECTS\2023\20230110\2023_MERIDIAN_53_SECOND\00_202323_CAD\SH\T505_CIVIL\SAN\202323_CU401-S01.DWG
 PLOTTED Wednesday, April 24, 2024 @ 01:52PM

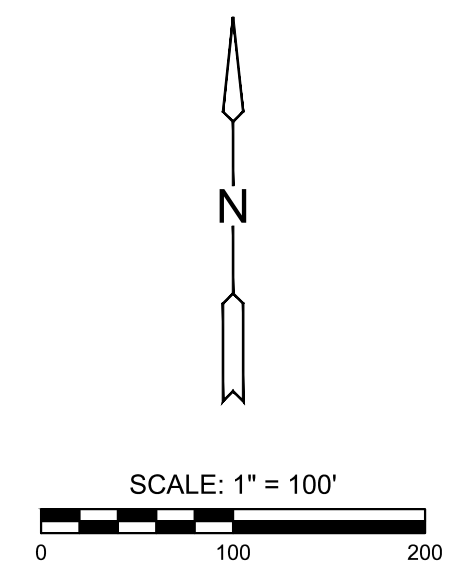


SANITARY POINTS			
Point #	Northing	Easting	Desc.
200	1720141.21	1637719.31	EX MH
201	1720135.50	1637689.17	MH
202	1720097.10	1637689.69	MH
203	1719745.70	1637694.49	MH
204	1720097.11	1637391.28	MH
205	1720344.19	1637245.24	EX MH

PLAT POINTS			
Point #	Northing	Easting	Desc.
500	1720359.58	1637229.56	PI
501	1720359.56	1637696.29	PI
502	1720144.22	1637699.05	PI
503	1719812.62	1637703.60	PI
504	1719759.74	1638301.07	PI
505	1719762.23	1638501.12	PI
506	1719095.07	1638515.12	PI
507	1719087.48	1637249.39	PI
508	1719173.56	1637247.99	PI

BENCHMARKS/CONTROL POINTS

- CP#4** MAG NAIL WITH MKEC CONTROL WASHER SET ON THE SOUTHWEST CORNER OF A CURB INLET 187' NORTH AND 26' EAST OF THE SOUTHEAST CORNER OF LOT 1, BLOCK 1 "THE MOORINGS PLAZA 4TH ADDN."
N=1718030.097, E=163855.165
ELEV.=1329.73(NAVD88)
 - CP#5** FOUND AN "X" CUT ON A SQUARE CUT, ON THE SOUTH END OF THE WEST HEADWALL OF RCB 63.5' NORTH AND 9' EAST OF THE NORTHEAST CORNER OF LOT 1, BLOCK 1 "THE MOORINGS PLAZA 4TH ADDN."
N=1718439.982, E=1638532.977
ELEV.=1328.69(NAVD88)
 - CP#6** MAG NAIL WITH MKEC CONTROL WASHER SET ON THE WEST CORNER OF A CURB INLET 8.5' SOUTH AND 2.5' EAST OF THE NORTH CORNER OF LOT 5, BLOCK 2 "THE MOORINGS PLAZA 4TH ADDN."
N=1718404.247, E=1637538.021
ELEV.=1329.12(NAVD88)
- Datum:
The Horizontal Datum is based on the Kansas Coordinate System of 1983, NAD83(2011), EPOCH:2010.0000, South Zone. Coordinates shown have been modified to the ground using a combined adjustment factor of 1.0001200144. State Plane coordinates can be calculated by multiplying the shown values by 0.99988.



EVERY ATTEMPT HAS BEEN MADE TO INSURE ALL COORDINATE VALUES SHOWN ARE AN ACCURATE AND TRUE REPRESENTATION OF THE CURRENT PLANS. ALL VALUES ARE TO BE CONFIRMED WITH THE FINAL SIGNED PLAN SET BEFORE USE.



SANITARY SEWER IMPROVEMENT
MERIDIAN 53 SECOND ADDITION
 PHASE 1

BUBBLE MAP		
PROJECT NO. 468-2024-003915		
SCALE 1" = 100'		
DRAWN	DESIGNED	CHECKED
BWS	DFL	SPE
1	COORDINATE UPDATED	04/02/25
0	ISSUED FOR CONSTRUCTION	02/07/25
NO.	REVISION	DATE
SHEET NO. CU401-S01 04 OF 13		

©2025 MKEC ENGINEERING, INC. ALL RIGHTS RESERVED WWW.MKEC.COM THESE DRAWINGS AND THEIR CONTENTS, INCLUDING, BUT NOT LIMITED TO, ALL CONCEPTS, DESIGNS, & IDEAS ARE THE EXCLUSIVE PROPERTY OF MKEC ENGINEERING, INC. (MKEC), AND MAY NOT BE USED OR REPRODUCED IN ANY WAY WITHOUT THE EXPRESS CONSENT OF MKEC.