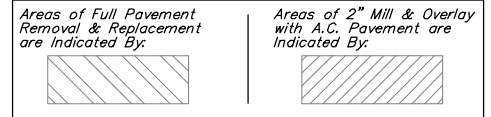


BENCHMARK:
 BM #1 - City of Wichita Disc Located in the Northeast Corner of the Intersection of Washington and 1st Street North, 83.9' East and 29.3' North of the Centerline of Both. Elev. = 1296.31 (MSL)

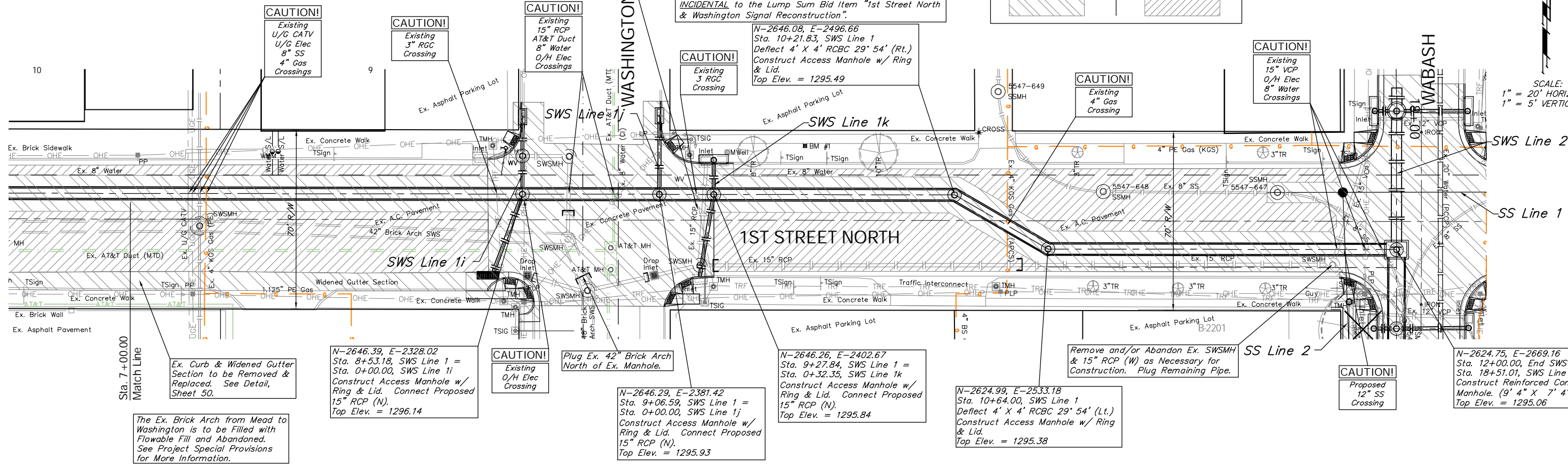
Cox Communications & Westar Requested to be On-Site During Excavation Around their Utilities. The Contractor Shall Contact Eva Moore with Cox at 260-7204 and Hank Velghe with Westar at 261-6828 when Construction of the RCBC Begins in 1st Street North.

Remove Ex. 15" RCP as Necessary for Construction. Plug Remaining Pipe South of RCBC.

The existing traffic signal conduits are to be supported during construction of the RCBC. Should the cable break or get cut, a new cable shall be run from the traffic signal controller to the signal pole. No splices will be allowed under the pavement. The Signals shall be Returned to Operation as soon as possible. Cost to be INCIDENTAL to the Lump Sum Bid Item "1st Street North & Washington Signal Reconstruction".



SCALE:
 1" = 20' HORIZONTAL
 1" = 5' VERTICAL



Sta. 7+00.00
 Match Line

Ex. Curb & Widened Gutter Section to be Removed & Replaced. See Detail, Sheet 50.
 The Ex. Brick Arch from Mead to Washington is to be Filled with Flowable Fill and Abandoned. See Project Special Provisions for More Information.

N-2646.39, E-2328.02
 Sta. 8+53.18, SWS Line 1 = Sta. 0+00.00, SWS Line 1i
 Construct Access Manhole w/ Ring & Lid. Connect Proposed 15" RCP (N).
 Top Elev. = 1296.14

CAUTION!
 Existing O/H Elec Crossing

Plug Ex. 42" Brick Arch North of Ex. Manhole.

N-2646.29, E-2381.42
 Sta. 9+06.59, SWS Line 1 = Sta. 0+00.00, SWS Line 1j
 Construct Access Manhole w/ Ring & Lid. Connect Proposed 15" RCP (N).
 Top Elev. = 1295.93

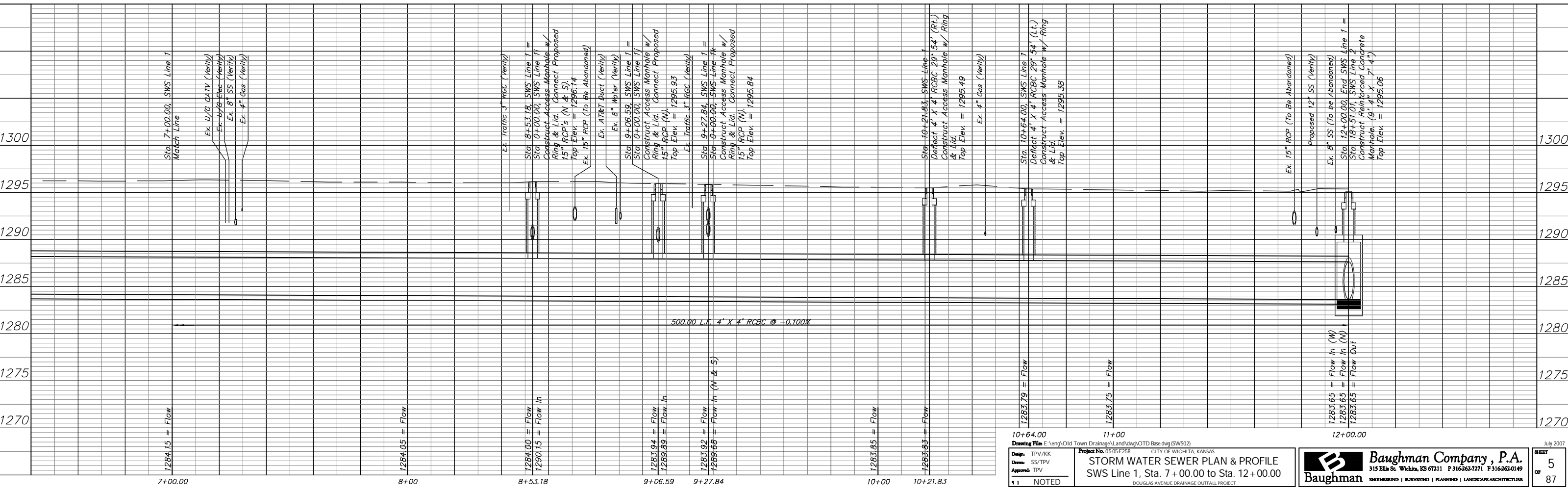
N-2646.26, E-2402.67
 Sta. 9+27.84, SWS Line 1 = Sta. 0+32.35, SWS Line 1k
 Construct Access Manhole w/ Ring & Lid. Connect Proposed 15" RCP (N).
 Top Elev. = 1295.84

N-2624.99, E-2533.18
 Sta. 10+64.00, SWS Line 1
 Deflect 4' X 4' RCBC 29' 54' (Lt.)
 Construct Access Manhole w/ Ring & Lid.
 Top Elev. = 1295.38

Remove and/or Abandon Ex. SWSMH & 15" RCP (W) as Necessary for Construction. Plug Remaining Pipe.

CAUTION!
 Proposed 12" SS Crossing

N-2624.75, E-2669.16
 Sta. 12+00.00, End SWS Line 1 = Sta. 18+51.01, SWS Line 2
 Construct Reinforced Concrete Manhole. (9' 4" X 7' 4")
 Top Elev. = 1295.06



10+64.00 11+00
 Drawing File: E:\eng\Old Town Drainage\Land\dwg\OTD Base.dwg (SWS02)
 Design: TPV/KK
 Date: SS/TPV
 Approved: TPV
 Project No. 05-05-E258 CITY OF WICHITA, KANSAS
STORM WATER SEWER PLAN & PROFILE
 SWS Line 1, Sta. 7+00.00 to Sta. 12+00.00
 DOUGLAS AVENUE DRAINAGE OUTFALL PROJECT

Baughman Company, P.A.
 315 Ellis St. Wichita, KS 67211 P 316-262-7271 F 316-262-0149
 ENGINEERING | SURVEYING | PLANNING | LANDSCAPE ARCHITECTURE