

BENCHMARK:
 BM #2 - Chiseled "+" Located in the Northeast Corner of the Intersection of Wabash and 1st Street North, 30.0' East and 34.8' North of the Centerline of Both. Elev. = 1295.76 (MSL)

N-2678.76, E-2669.24
 Sta. 17+97.00, SWS Line 2 = Sta. 0+09.12, SWS Line 2a
 Construct Std. Type "P" Manhole. (6' Dia.) Connect Proposed 15" RCP's (W & E).
 Top Elev. = 1294.76

N-2687.76, E-2669.10
 Sta. 17+88.00, Begin SWS Line 2 Plug Proposed 48" RCP

CAUTION!
 Proposed 8" SS Crossing

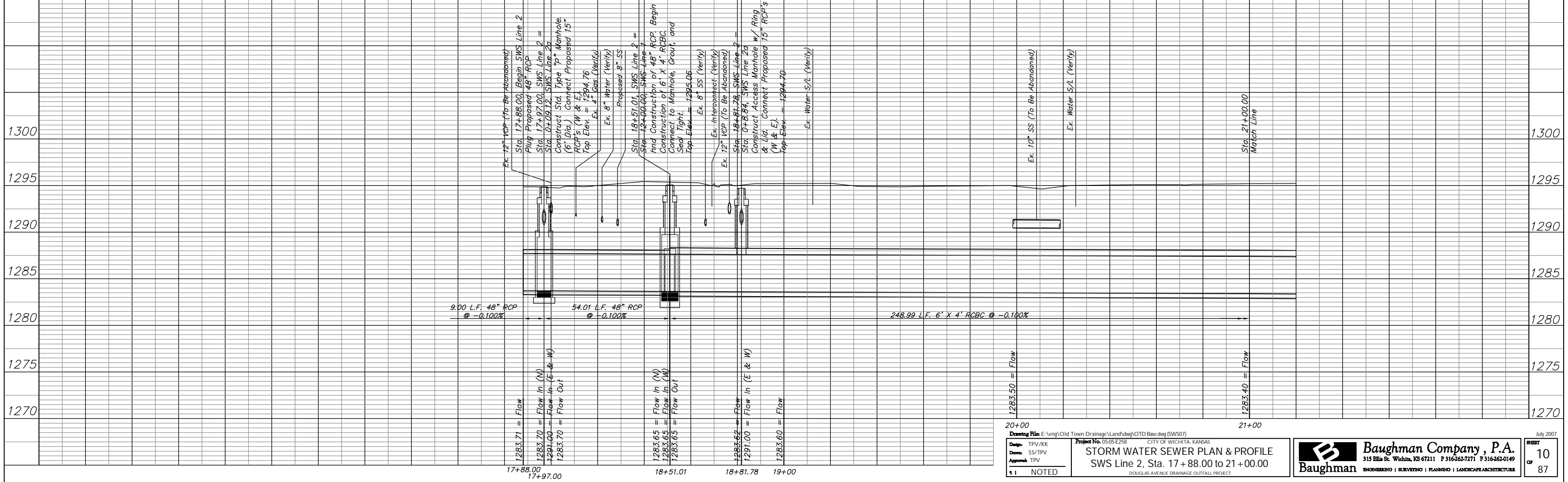
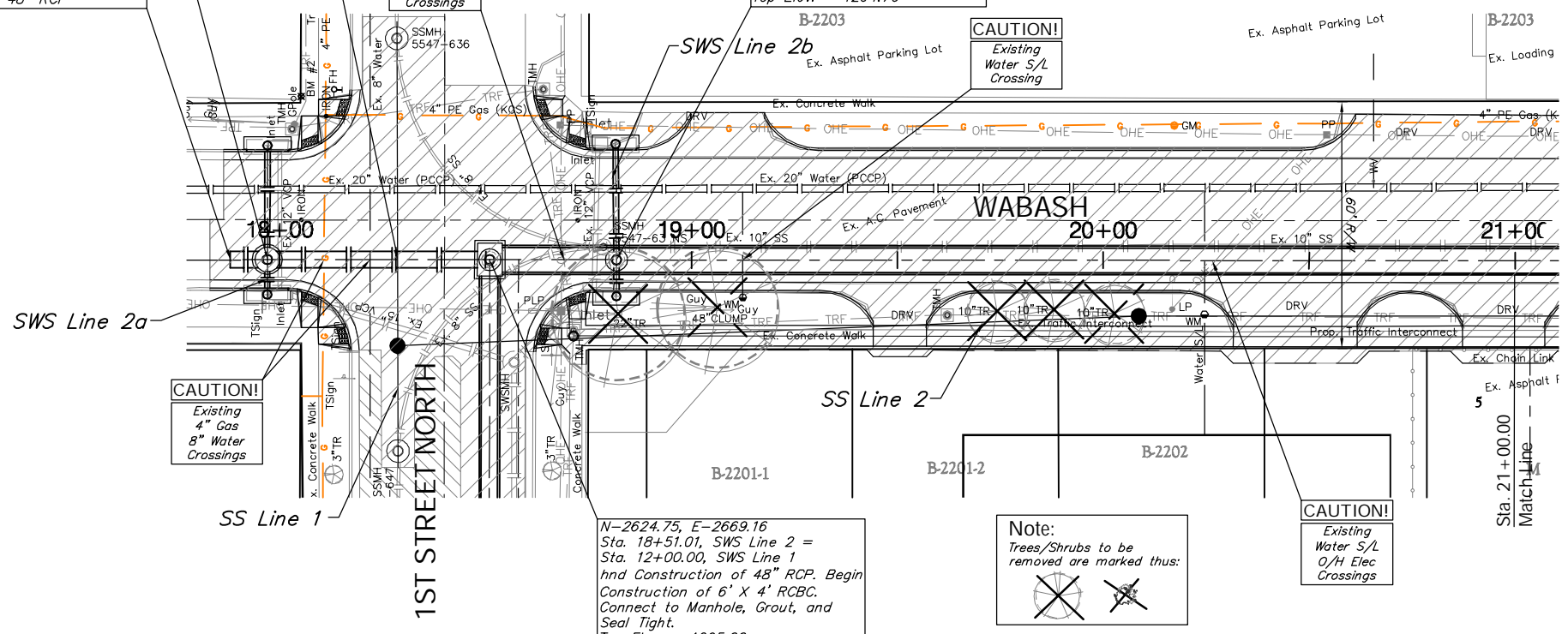
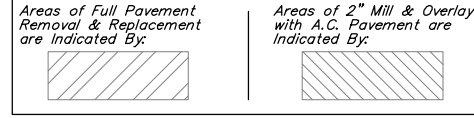
CAUTION!
 Existing 8" SS O/H Elec Interconnect Crossings

N-2593.98, E-2669.15
 Sta. 18+81.78, SWS Line 2 = Sta. 0+08.84, SWS Line 2b
 Construct Access Manhole w/ Ring & Lid. Connect Proposed 15" RCP's (W & E).
 Top Elev. = 1294.70

CAUTION!
 Existing Water S/L Crossing

SCALE:
 1" = 20' HORIZONTAL
 1" = 5' VERTICAL

Wabash to be Completely Reconstructed from Just North of 1st Street North to Douglas. See Wabash Paving Plan for Additional Information.



20+00
 Drawing File: E:\eng\Old Town Drainage\Land\dwg\OTD Base.dwg (SW507)
 Design: TPV/KK
 Date: SS/TPV
 Approved: TPV
 51 NOTED

Project No. 05-05-E258 CITY OF WICHITA, KANSAS
STORM WATER SEWER PLAN & PROFILE
 SWS Line 2, Sta. 17+88.00 to 21+00.00
 DOUGLAS AVENUE DRAINAGE OUTFALL PROJECT

21+00
 Sta. 21+00.00 Match Line

Baughman Company, P.A.
 315 Ellis St. Wichita, KS 67211 P 316-262-7271 F 316-262-0149
 ENGINEERING | SURVEYING | PLANNING | LANDSCAPE ARCHITECTURE

July 2007
 SHEET 10 OF 87