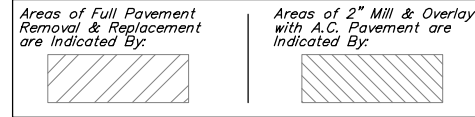
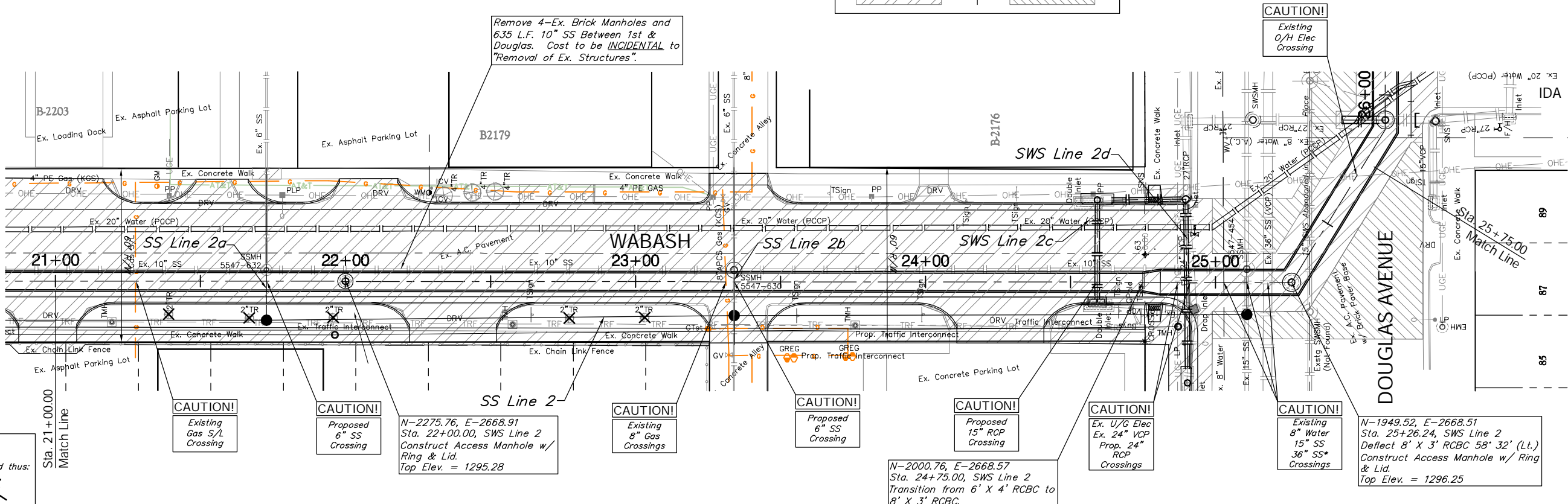


BENCHMARK:
 BM #3 - Chiseled "□" Located on the Southeast Curb Return at the Intersection of Douglas and Ida, 41.60' South and 26.5' East of the Centerline of Both. Elev. = 1295.59 (MSL)

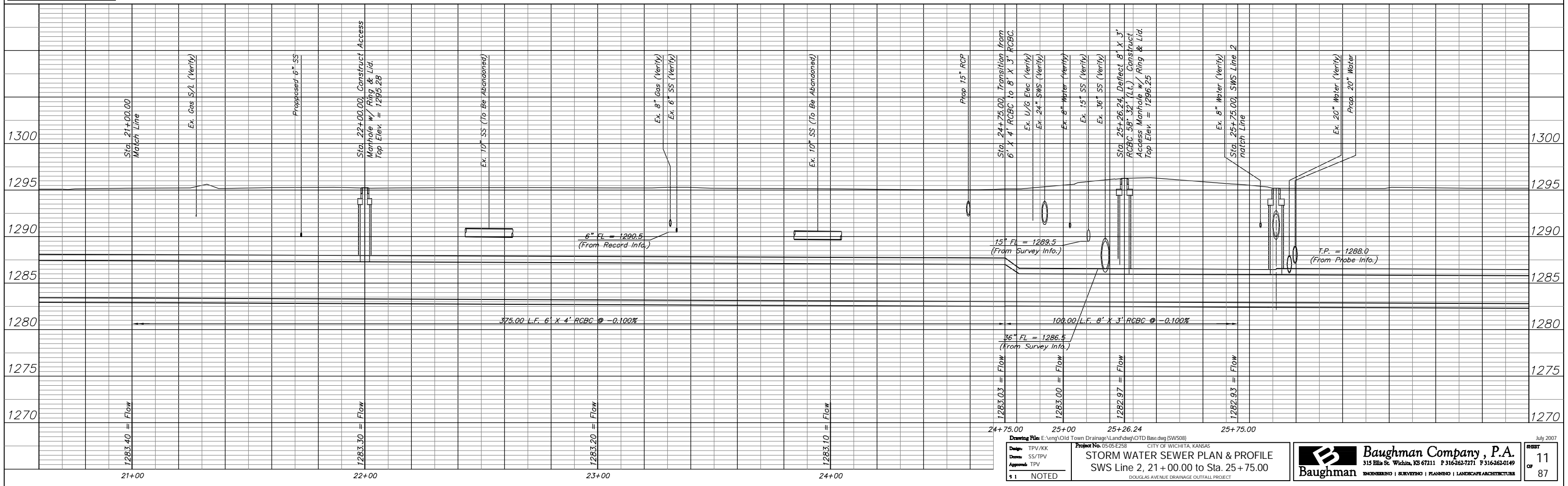


SCALE:
 1" = 20' HORIZONTAL
 1" = 5' VERTICAL



Note:
 Trees/Shrubs to be removed are marked thus:

* The Contractor Shall Submit the Proposed Method of Supporting the 36" VCP Sanitary Sewer During Construction for Approval by the City of Wichita Water & Sewer Dept. Prior to Beginning Construction.



Drawing File: E:\eng\Old Town Drainage\Land\dwg\OTD Base.dwg (SW508)
 Project No. 05-05-E258 CITY OF WICHITA, KANSAS
STORM WATER SEWER PLAN & PROFILE
 SWS Line 2, 21+00.00 to Sta. 25+75.00
 DOUGLAS AVENUE DRAINAGE OUTFALL PROJECT

Baughman Company, P.A.
 315 Ella St. Wichita, KS 67211 P 316-262-7271 F 316-262-0149
 ENGINEERING | SURVEYING | PLANNING | LANDSCAPE ARCHITECTURE

11 OF 87