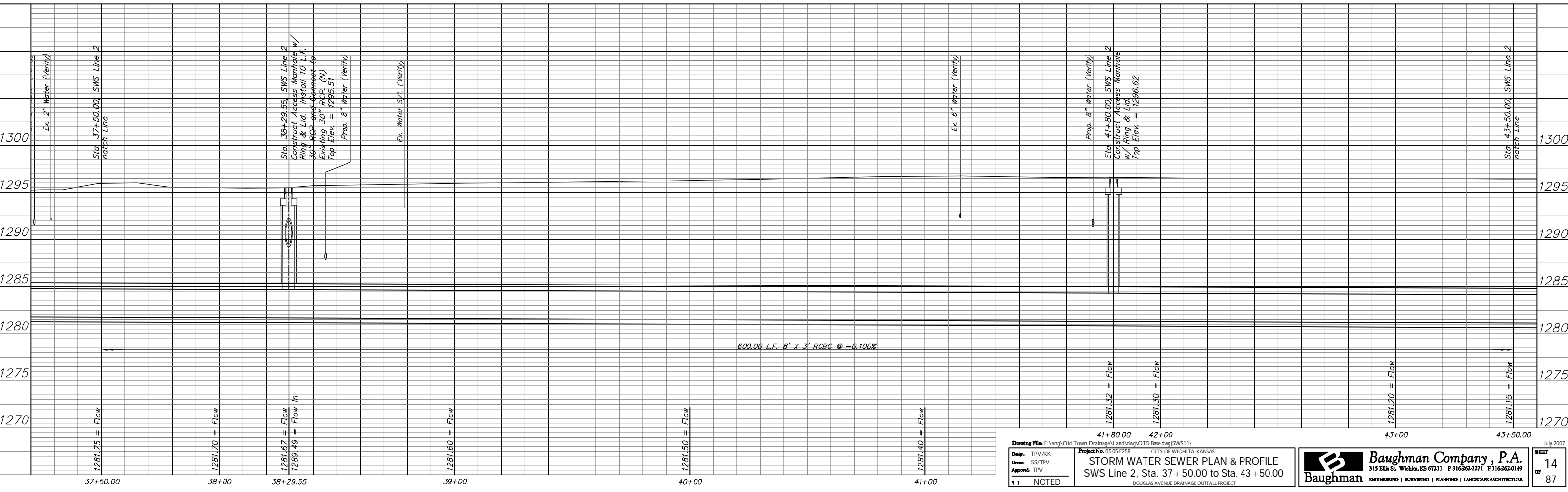
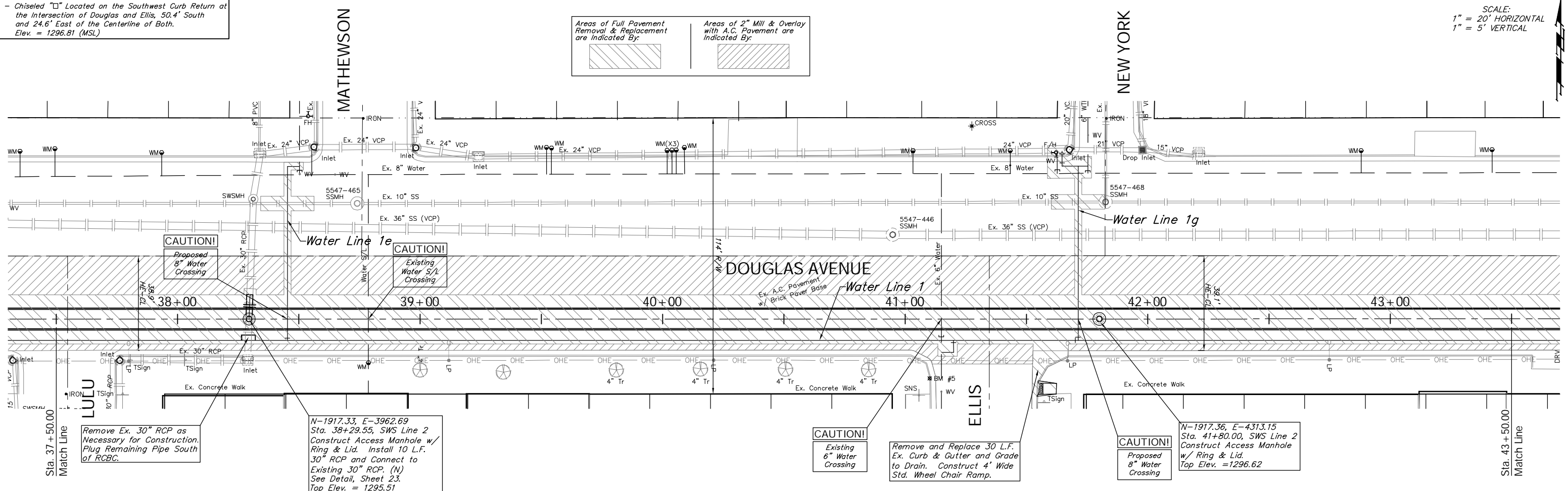
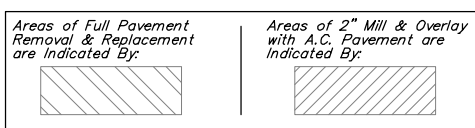


BENCHMARK:  
 BM #5 - Chiseled "D" Located on the Southwest Curb Return at the Intersection of Douglas and Ellis, 50.4' South and 24.6' East of the Centerline of Both. Elev. = 1296.81 (MSL)

SCALE:  
 1" = 20' HORIZONTAL  
 1" = 5' VERTICAL



Drawing File: E:\eng\Old Town Drainage\Land\dwg\OTD Base.dwg (SWS11)  
 Project No. 05-05-E258 CITY OF WICHITA, KANSAS  
 Design: TPV/KK  
 Drawn: SS/TPV  
 Approved: TPV  
 1 NOTED

**STORM WATER SEWER PLAN & PROFILE**  
 SWS Line 2, Sta. 37+50.00 to Sta. 43+50.00  
 DOUGLAS AVENUE DRAINAGE OUTFALL PROJECT

**Baughman Company, P.A.**  
 315 Ellis St. Wichita, KS 67211 P 316-262-7271 F 316-262-0149  
 ENGINEERING | SURVEYING | PLANNING | LANDSCAPE ARCHITECTURE

July 2007  
 SHEET 14 OF 87