

SCALE:
1" = 20' HORIZONTAL
1" = 5' VERTICAL



BENCHMARK:
BM #3 - Chiseled "C" Located on the Southeast Curb Return at the Intersection of Douglas and Ida, 41.60' South and 26.5' East of the Centerline of Both. Elev. = 1295.59 (MSL)

Install 2-8" MJ Caps on the Ex. 8" Water Line East of Existing Tee.

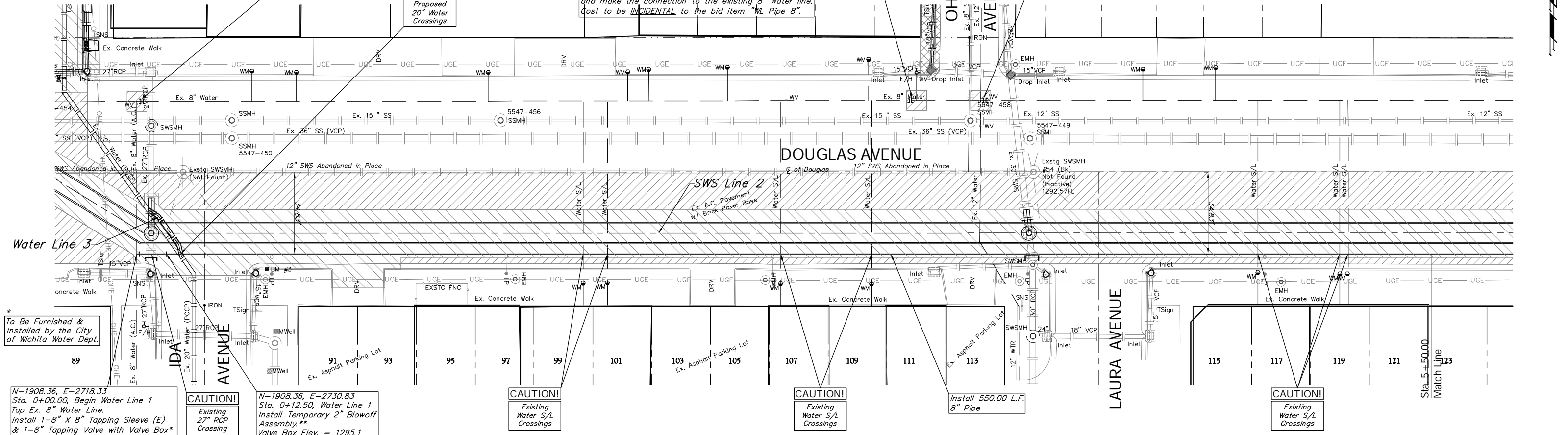
CAUTION!
Existing & Proposed 20" Water Crossings

* To Be Furnished & Installed by the City of Wichita Water Dept.

** When the RCBC Construction has reached the point where the existing 27" VCP can be removed, the Contractor shall remove the Temporary 2" Blowoff Assembly, install 12.50 L.F. Clean Swabbed 8" Pipe, and make the connection to the existing 8" water line. Cost to be INCIDENTAL to the bid item "WL Pipe 8".

Install 2-8" MJ Caps on the Ex. 8" Water Line West of the Existing Fire Hydrant Tee.

Install 2-8" MJ Caps on the Ex. 8" Water Line East of Existing Cross.



To Be Furnished & Installed by the City of Wichita Water Dept.

N-1908.36, E-2718.33
Sta. 0+00.00, Begin Water Line 1 Tap Ex. 8" Water Line. Install 1-8" X 8" Tapping Sleeve (E) & 1-8" Tapping Valve with Valve Box* Valve Box Elev. = 1295.4

CAUTION!
Existing 27" RCP Crossing

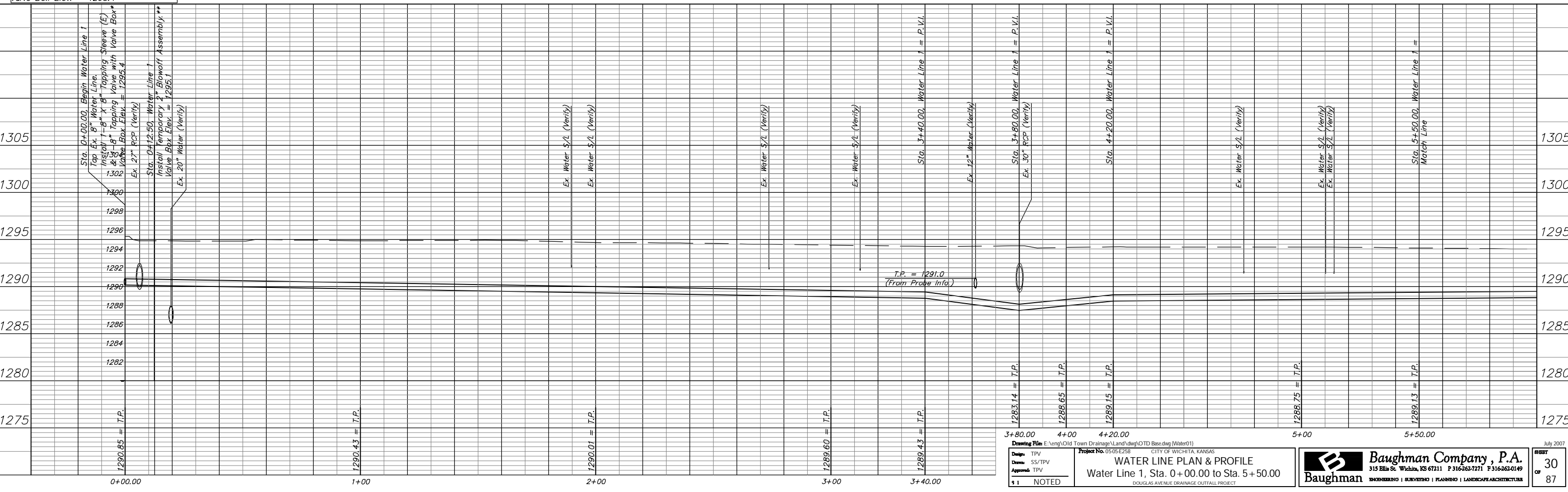
N-1908.36, E-2730.83
Sta. 0+12.50, Water Line 1 Install Temporary 2" Blowoff Assembly.** Valve Box Elev. = 1295.1

CAUTION!
Existing Water S/L Crossings

CAUTION!
Existing Water S/L Crossings

Install 550.00 L.F. 8" Pipe

CAUTION!
Existing Water S/L Crossings



3+80.00 4+00 4+20.00
Drawing File: E:\eng\Old Town Drainage\Land\dwg\OTD Base.dwg (Water01)
Design: TPV
Drawn: SS/TPV
Approved: TPV
Project No. 05-05-E258 CITY OF WICHITA, KANSAS
WATER LINE PLAN & PROFILE
Water Line 1, Sta. 0+00.00 to Sta. 5+50.00
DOUGLAS AVENUE DRAINAGE OUTFALL PROJECT

Baughman **Baughman Company, P.A.**
315 Ella St. Wichita, KS 67211 P 316-262-7271 F 316-262-0149
ENGINEERING | SURVEYING | PLANNING | LANDSCAPE ARCHITECTURE

July 2007
SHEET 30 OF 87