

BENCHMARK:  
 BM #8 - City of Wichita Disc Located on Top of the Corral Rail at the Southwest Corner of the Douglas Street Bridge Over the Wichita Drainage Canal.  
 Elev. = 1300.27 (MSL)

Remove Ex. Fire Hydrant & Valve Box and Salvage to the City of Wichita. Install 1-6" MJ Plug (S).

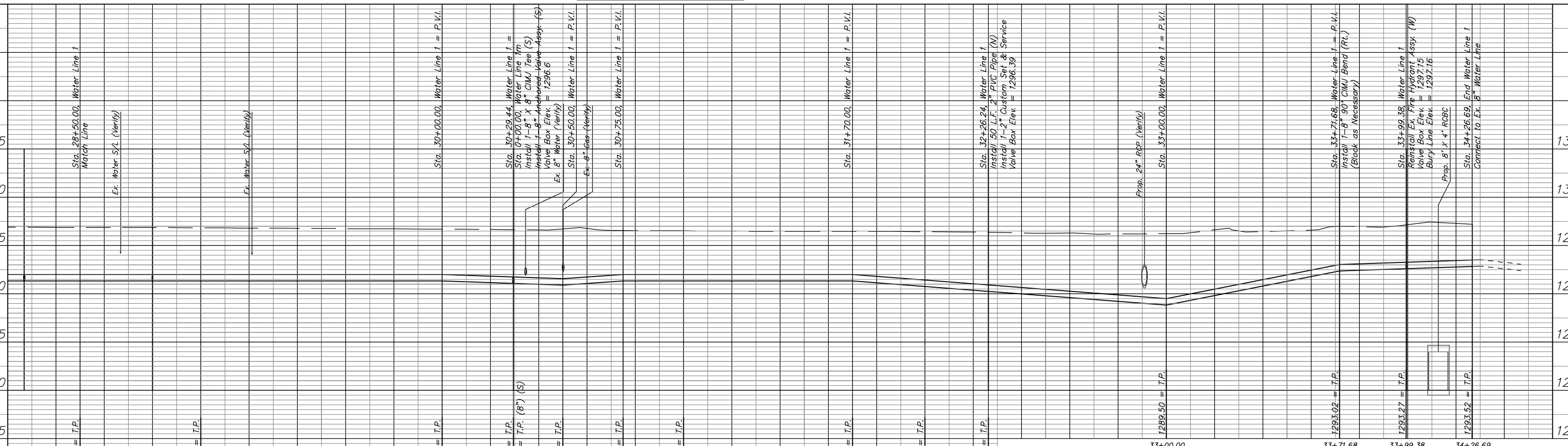
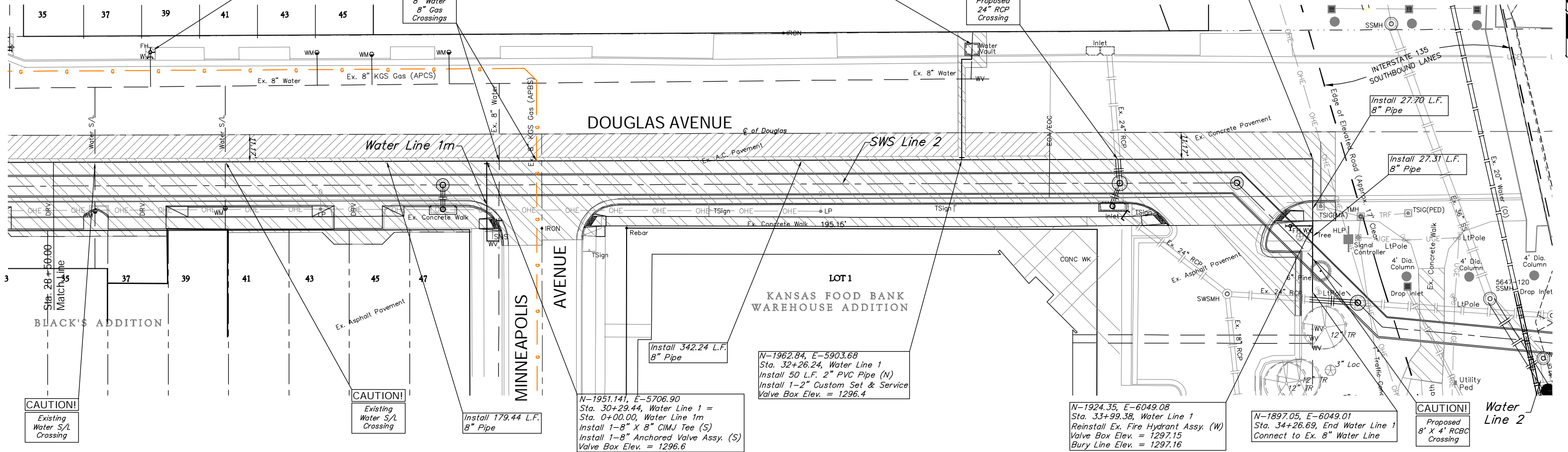
**CAUTION!**  
 Existing 8" Water & 8" Gas Crossings

Remove Ex. Meter Vault and Setting. Install New Meter and Setting & Connect to Existing Consumer Line. See Detail, Sheet 45.

**CAUTION!**  
 Proposed 24" RCP Crossing

N-1952.05, E-6049.14  
 Sta. 33+71.68, Water Line 1 = Install 1-8" 90° CIMJ Bend (Rt.) (Block as Necessary)

SCALE:  
 1" = 20' HORIZONTAL  
 1" = 5' VERTICAL



Drawing File: E:\eng\Old Town Drainage\Land\dwg\OTD Base.dwg (Water06)  
 Design: TPV  
 Date: SS/TPV  
 Approved: TPV  
 Project No. 05-05-E258  
 CITY OF WICHITA, KANSAS  
**WATER LINE PLAN & PROFILE**  
 Water Line 1, Sta. 28+50.00 to Sta. 34+26.69  
 DOUGLAS AVENUE DRAINAGE OUTFALL PROJECT

July 2007  
 SHEET 35 OF 87  
**Baughman Company, P.A.**  
 315 Ellis St. Wichita, KS 67211 P 316-262-7271 F 316-262-0149  
 ENGINEERING | SURVEYING | PLANNING | LANDSCAPE ARCHITECTURE