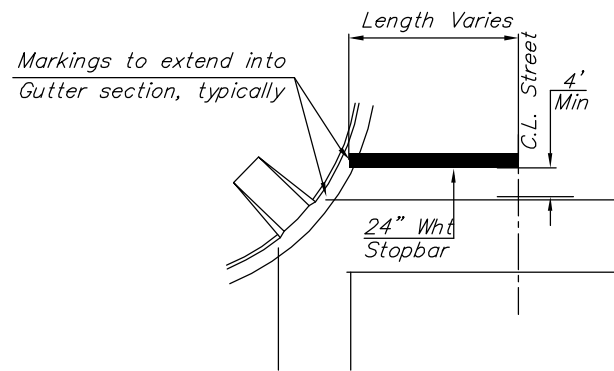
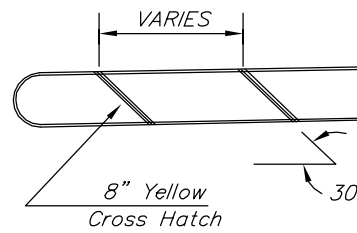


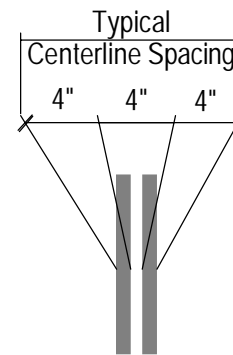
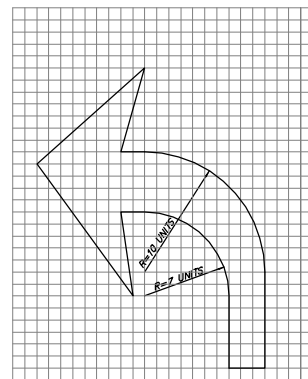
Typical Crosswalk Detail



Typical 10' Crosswalk Markings (A.C. surface, Concrete)



Std Symbolic Marking White Left Arrow



MARKING BILL OF MATERIALS			
ITEMS	UNITS	TOTAL	USE*
PLASTIC MARKING TAPE (4" WHITE)	LF	8,102	8,345
PLASTIC MARKING TAPE (6" WHITE)	LF	1,810	1,865
PLASTIC MARKING TAPE (24" WHITE)	LF	264	272
PLASTIC MARKING TAPE (4" YELLOW)	LF	5,523	5,690
PLASTIC MARKING TAPE (8" YELLOW)	LF	--	--
PLASTIC MARKING SYMBOL (LT TURN ARROW) WHITE	EA	18	18

For Information Only

* ±3% Overage

GENERAL NOTES - MARKING

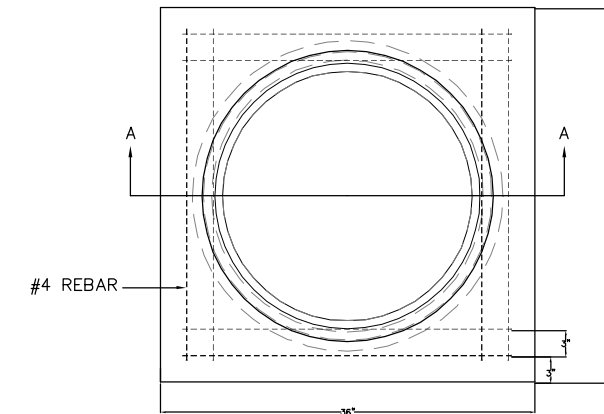
- All pavement markings shall conform to the current standards set forth in the latest publication of the "Manual on Uniform Traffic Control Devices".
- All pavement markings shall be thermoplastic, unless otherwise approved by the Engineer. Pavement markings shall be installed per manufacturer's recommendations and shall meet KDOT's 90M-100-R10 specification (City Standard Specifications). Full traffic may not be restored (and substantial project completion achieved) until all pavement markings are in place. Should construction timing be such that restoration of traffic becomes necessary during temperatures prohibiting the installation of thermoplastic markings, the contractor shall install and maintain temporary markings until such time that thermoplastic markings may be properly installed. Except for the material requirement, temporary pavement markings shall be placed equivalent, in every manner (i.e. dimension, frequency, spacing, etc.), to the permanent marking layout. The cost for temporary pavement markings will not be paid for directly, but shall be considered SUBSIDIARY to the bid item "Pavement Markings".

TRAFFIC INTERCONNECT BILL OF MATERIALS

ITEMS	UNITS	TOTAL
2" RGC CONDUIT W/ 6 PR. WIRE	LF	1,882
INTERCONNECT TRAFFIC MANHOLE	EACH	3

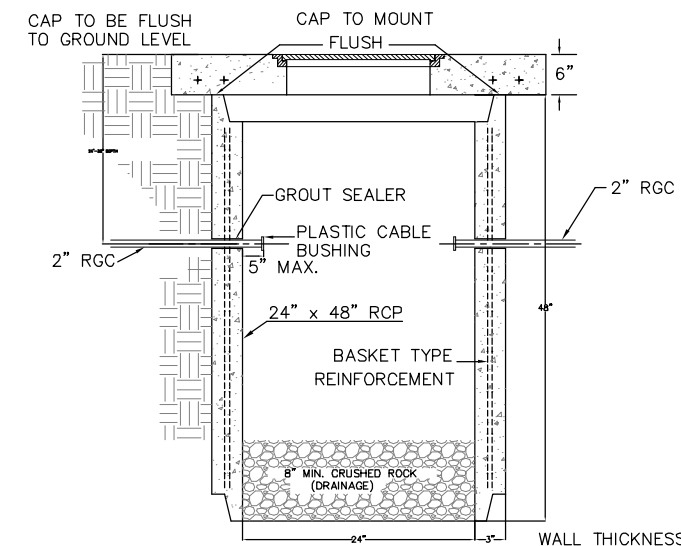
For Information Only

INTERCONNECT TRAFFIC MANHOLE DETAILS

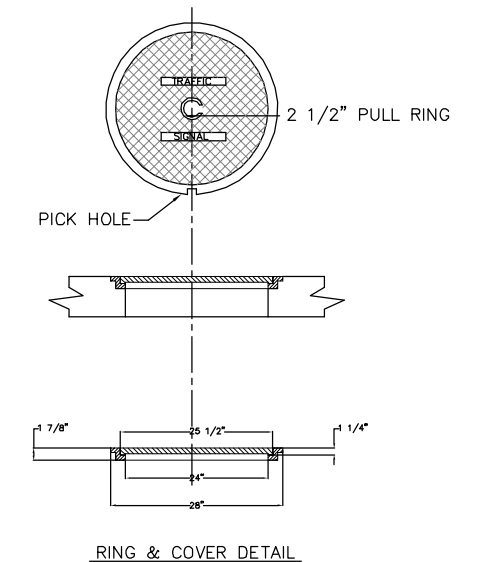


PRE-CAST CONCRETE INTERCONNECT TRAFFIC MANHOLE
(24" I.D. X 48" RCP)
with 6" CAP

The 6" Concrete Cap Shall be Poured in Place When the Manhole Top Falls in the Proposed Concrete Sidewalk.



SECTION A-A



RING & COVER DETAIL

All cost associated with connecting the proposed interconnect and existing system shall not be paid for directly, but shall be considered INCIDENTAL to the Lump Sum Bid Item "Traffic Signal Interconnect".

Drawing File: E:\eng\Old Town Drainage\Land\dwg\Traffic Base.dwg

Design: AZIERE
Date: AZIERE
Approved: JFB

1 NOTED

Project No. 05-05-E258 CITY OF WICHITA, KANSAS

PAVEMENT MARKING & TRAFFIC INTERCONNECT DETAILS
DOUGLAS AVENUE DRAINAGE OUTFALL PROJECT

Baughman Company, P.A.
315 Ellis St. Wichita, KS 67211 P 316-262-7271 F 316-262-0149
ENGINEERING | SURVEYING | PLANNING | LANDSCAPE ARCHITECTURE

July 2007

75 OF 87