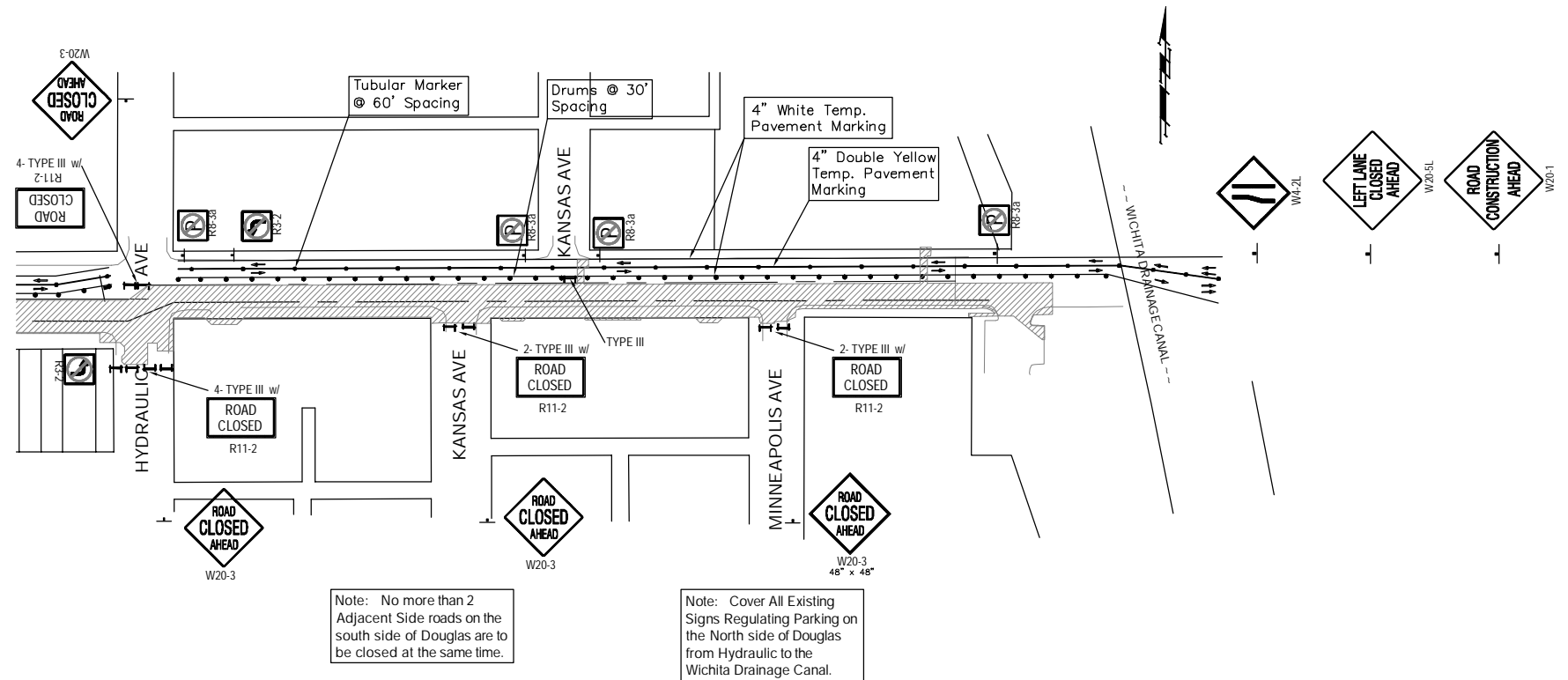


LEGEND	
	Work Area
	Reflectorized Drum (40' Spacing)
	Tubular Marker (60' Spacing)
	Type III Barricade
	Traffic Flow Pattern

Note: For Detour Signage See Detour Detail This Sheet

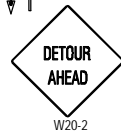


The Contractor May Temporarily Pave Portions of the Project to Carry Traffic Across the RCBC Trench at Side Streets Along Douglas and at the Intersections of Douglas & Hydraulic and Douglas & Wabash. The pavement shall be 5" Hot Mix A.C. Pavement. See Table on Previous Sheet for Quantities.

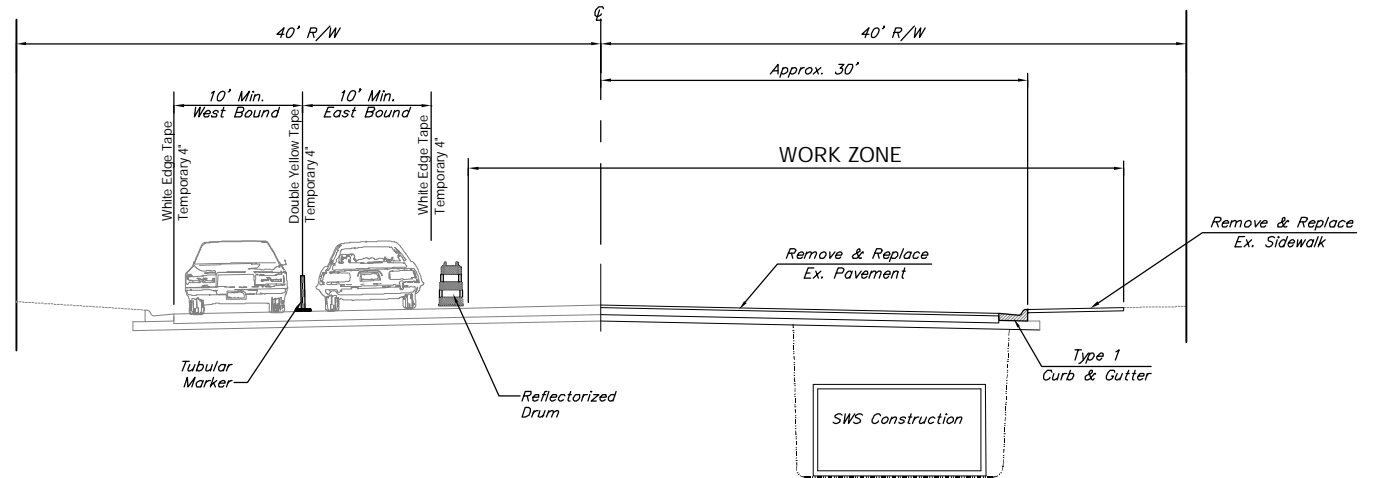


Hydraulic Ave. @ Douglas Ave. Detour

While Installing SWS Across Hydraulic Ave. at Douglas Ave. and Replacing the Pavement in this location, the Traffic on Hydraulic is to Detour as follows: North Bound Traffic is to Detour West on Waterman Street, to Washington Ave. North on Washington Ave. to 1st Street, and East on 1st Street, South Bound Traffic is to Detour West on Douglas Ave. to Washington Ave., South on Washington Ave. to Waterman Street, and East of on Waterman Street.



Traffic Control is to move with Construction. Traffic Control is to extend beyond actual Construction as Required, but at least 1/2 block each way. Tapers are to move along with Construction. Close side roads and supply necessary signs as the Construction moves.



LANE LAYOUT (Looking East)
Install SWS & Reconstruct Roadway – South Side Douglas, Hydraulic Ave. to Wichita Drainage Canal

Drawing File: E:\en\Old Town Drainage\Traffic\Con Seq 03.dwg

Design: KK
Drawn: TCA
Approved: TPV
Scale: NONE

Project No. 05-05-E258 CITY OF WICHITA, KANSAS

CONSTRUCTION SEQUENCING & TRAFFIC CONTROL PLAN
DOUGLAS AVENUE DRAINAGE OUTFALL PROJECT

Baughman Company, P.A.
315 Ellis St. Wichita, KS 67211 P 316-262-7271 F 316-262-0149
ENGINEERING | SURVEYING | PLANNING | LANDSCAPE ARCHITECTURE

July 2007

SHEET 78 OF 87