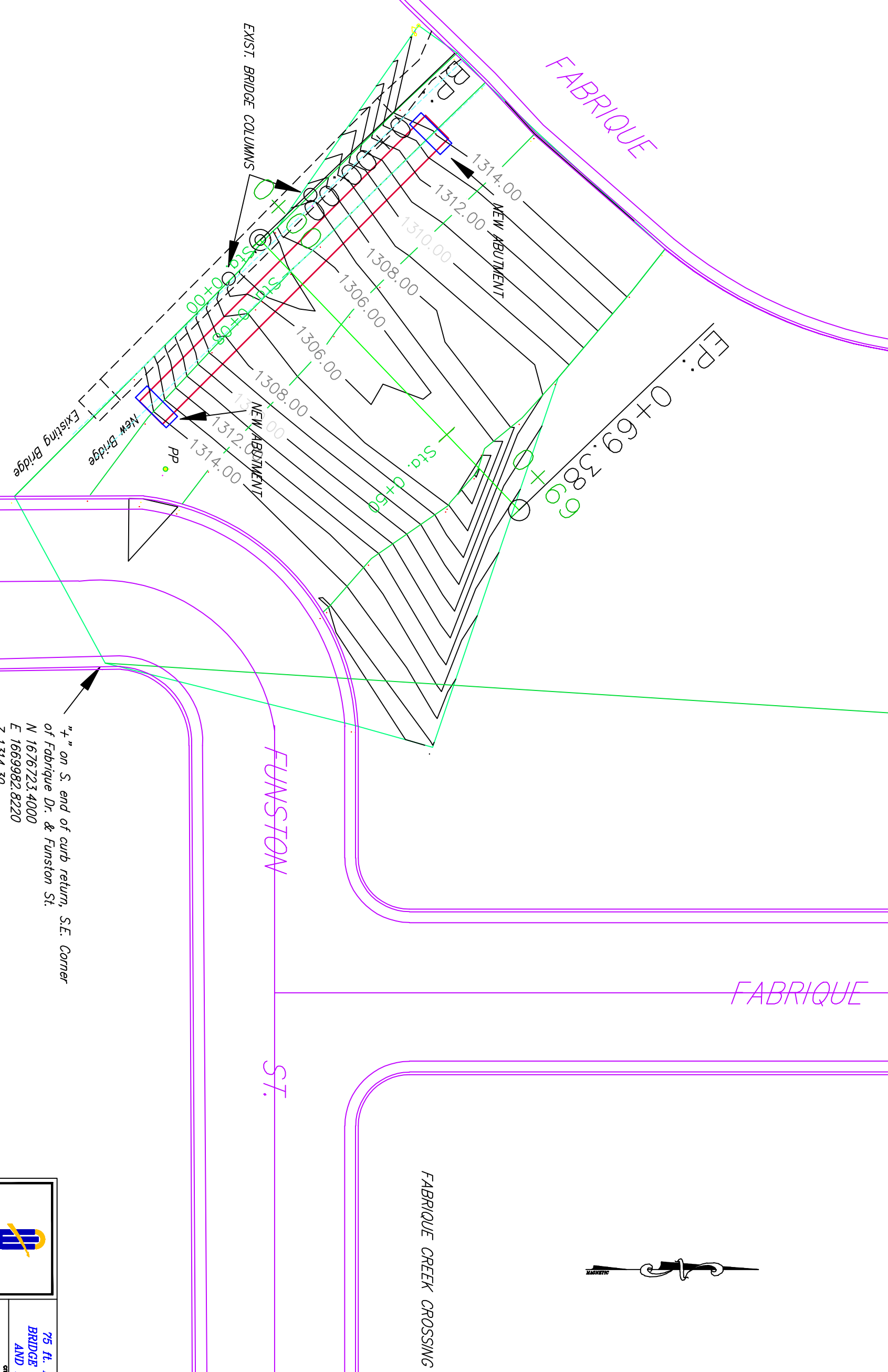


Ditch Topo



"+" on S. end of curb return, S.E. Corner
 of Fabrique Dr. & Funston St.
 N 1676723.4000
 E 1669982.8220
 Z 1314.30



CITY OF
WICHTA
 PUBLIC WORKS
 ENGINEERING

**75 ft. PEDESTRIAN
 BRIDGE AT FUNNSTON
 AND FABRIQUE**

CITY ENGINEER
JAMES L. ARMOUR, P.E., L.S.

PROJECT NUMBER	O&A NUMBER	DATE
472-84510	132720	05/07
CITY ENGINEER'S OFFICE		
1005 NORTH MAIN STREET		
WICHTA, MO 65754-1830		
PH (417) 385-4931		

DESIGN

SCALE

SHEET

S.B.

A.S.

2 OF 4