

MH # 5650-073  
Replace Manhole Frame & Cover  
Remove & Replace Manhole Bench & Invert  
Approx depth = 7.0 ft

MH # 5650-072  
Replace Manhole Frame & Cover  
Approx depth = 6.9 ft

1703 E.  
23rd St. N.

1727 E.  
23rd St. N.

23RD ST. N.

KANSAS

324'

230'

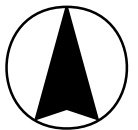
Remove & Replace 230 lf of 8" Pipe

22ND ST. N.

HYDRAULIC

2-1

SITE 2



2-2

23RD

1703

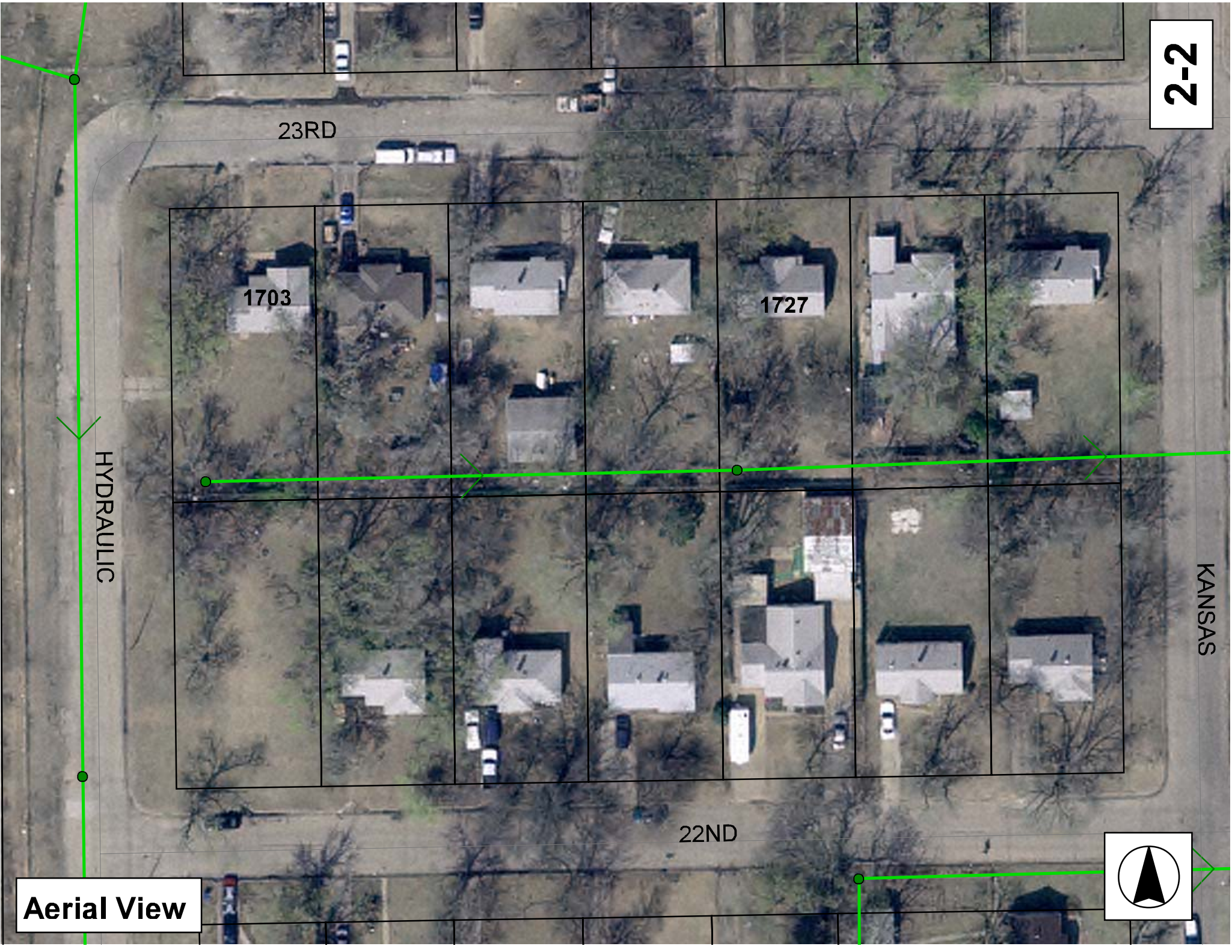
1727

HYDRAULIC

KANSAS

22ND

Aerial View



# Television Inspection Master Report

5/8/2007  
9:47 AM

US Structure: 5650-073      1703 E 23RD ST N      Date Insp: 3/7/2006      Basin: EC02D  
DS Structure: 5650-072      1727 E 23RD ST      Dir Televised: Upstream To Downstream

## Pipe Information

Shape: Round      Length Status:      Project No.: E-125  
Dia/Ht Width: 8      0      Material: VCP      Index:  
Length: 233.3      Slope: 0.103      Surface:

## Inspection Information

Crew: 690      Percent Full:      Tape ID: V-5035

Obs. #	VTR Counter	Distance	Location	Description	Rating	Obsrvd (gpm)	Est. (gpm)	Ratings Struct	Clean	Remain (gpm)
1	00	0.0	US Manhole	5650-073	1		0.000	0	0	0.000
2	1:19	2.6	North	Wye Service / Sealed Off	1		0.000	0	0	0.000
3	1:35	5.8	South	Wye Service / Sealed Off	1		0.000	0	0	0.000
4	1:47	7.0	Quad 3 / L-Lt	Roots	2		0.004	2	4	0.004
5	2:04	13.0	Quad 4 / U-Lt	Roots	2		0.004	2	4	0.004
6	3:09	33.2	South	Wye Service	4		0.000	60	0	0.000
			1710 E 22ND ST N / roots heavy up inside the service							
7	3:38	43.3	Quad 2 / L-Rt	Roots	2		0.004	2	4	0.004
8	4:23	45.1	North	Wye Service	2		0.000	0	0	0.000
			1703 E 23RD ST N / Full of Roots							
9	5:15	77.0	Quad 4 / U-Lt	Crack-Horizontal	3		0.004	5	0	0.004
10	5:39	84.5	North	Wye Service	1		0.000	0	0	0.000
			1709 E 23RD ST N							
11	5:58	87.4	South	Wye Service	1		0.000	0	0	0.000
			1716 E 22ND ST N							
12	7:09	114.6	North	Wye Service / Sealed Off	1		0.000	0	0	0.000
13	7:21	117.6	South	Wye Service / Sealed Off	1		0.000	0	0	0.000
14	7:28	120.1	Quad 1 / U-Rt	Crack-Horizontal	3		0.004	5	0	0.004
15	7:42	122.5	Quad 3 / L-Lt	Broken Pipe	4		0.030	78	0	0.030
			NEEDS REPAIR / invert is shifting							
16	9:04	140.8	North	Wye Service	2		0.000	0	0	0.000
			1715 E 23 RD ST N / Full of Roots							
17	9:28	143.8	South	Wye Service	1		0.000	0	0	0.000
			1722 E 22ND ST N / Full of Roots							
18	10:37	174.9	North	Wye Service / Sealed Off	1		0.000	0	0	0.000
19	10:52	177.7	South	Wye Service / Sealed Off	1		0.000	0	0	0.000
20	11:30	203.6	North	Break-In Conn	5		0.010	400	0	0.010
			1721 E 23RD ST / PROTRUDING TAP / BOOT LEG CONNECTION NEEDS REPAIR							
21	12:35	207.8	South	Wye Service	1		0.000	0	0	0.000
			1722 E 22ND ST N / roots							
22	13:03	221.3	Invert	Crack-Radial	4		0.008	10	0	0.008
23	13:28	227.3	DS Manhole	5650-072	1		0.000	0	0	0.000

118' to 146' is all broken pipe. Invert is shifted at 127' too severe to line the pipe. Line needs replaced.

2-3