

N-5,087.5940, E-4,552.8521
Sta. 0+27.0, SWS Line No. 2
Construct Type 1A Curb Inlet
L= 6'-4", W= 4'-4"
Top Elev.= 228.10
See Detail Sh. No. C2.7

N-5,060.5688, E-4,551.9136
Sta. 0+00.0, SWS Line No. 2
Existing Curb Inlet*
Top Elev.= 227.89
Install 27.0 L.F. 15" RCP
I= 220.39

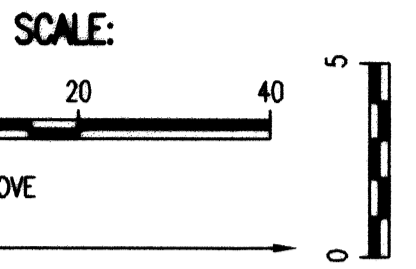
CAUTION !!!
Proposed 8"
Sanitary Sewer
(by others)

CAUTION !!!
4" Gas Line
(KGS)

Contractor to verify size & location
of gas line before construction.

N-4,986.5643, E-4,848.3090
Sta. 0+00.0, SWS Line No. 3
Existing Curb Inlet*
Top Elev.= 224.78
Install 108.9 L.F. 18" RCP
I= 218.78

N-4,987.3505, E-4,957.1804
Sta. 3+03.2, SWS Line No. 3
Const. Type C Area Inlet
Top Elev.= 225.00
See Details Sh. No. C6.2



N-4,987.3505, E-4,957.1804
Sta. 1+08.9, SWS Line No. 3
Const. Std. Type 'P' Manhole
Top Elev.= 226.10
Install 194.3 L.F. 18" RCP
See Details Sh. No. C6.2

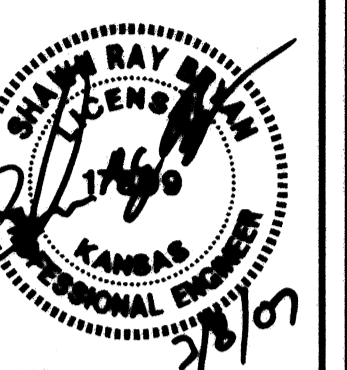
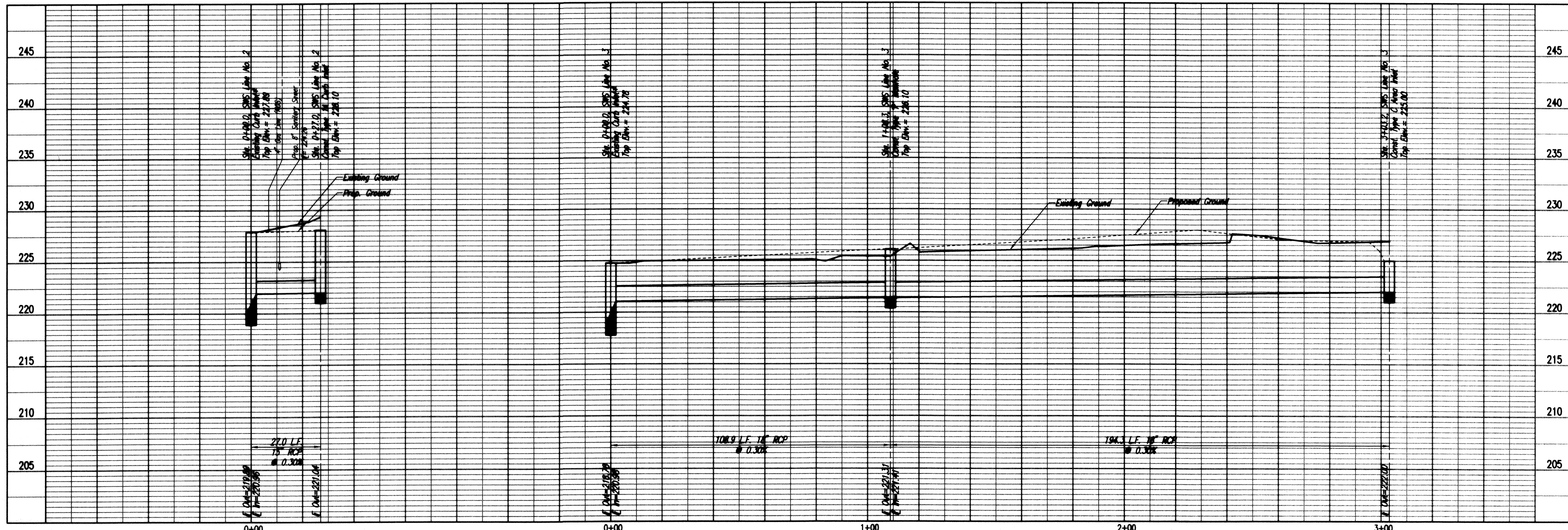
*CUT OPENING IN WALL OF EXISTING INLET AND REMOVE FLOOR
SHAPING AS NECESSARY. INSTALL NEW PIPE, CUT FLUSH WITH
INSIDE WALL OF MANHOLE, AND GROUT IN PLACE WITH NON-SHRINK
GROUT. INSTALL NEW FLOOR SHAPING.

Top Elev.=227.89
I=219.89 (E)
I= 220.39 (W)

Top Elev.=225.60
I Out=219.15
(Water Level 221.0±)

STORM WATER SEWER LINE NO. 2

STORM WATER SEWER LINE NO. 3



**Ethanol Products
Corporate Headquarters**
38th and Webb Road
Wichita, Kansas

prints issued
3-9-07
For Construction

project no.
06122

drawn SAU check GMS

STORM
SEWER
PLAN/PROFILE

C2.4

of

Professional Engineering Consultants, P.A.
303 S. TOPEKA • WICHITA, KANSAS 67202 • 316-262-2691 • FAX: 316-262-3003
www.pec.com

Saved: 03-08-2007 12:19:04 PM by: SAU
Plot Scale: 1:20 03-08-2007 1:14:39 PM by: SAU
G:\2006\06567\Site Civil\Profile Plans\Storm Water Sewer\06567-C2.4-SWS2P2