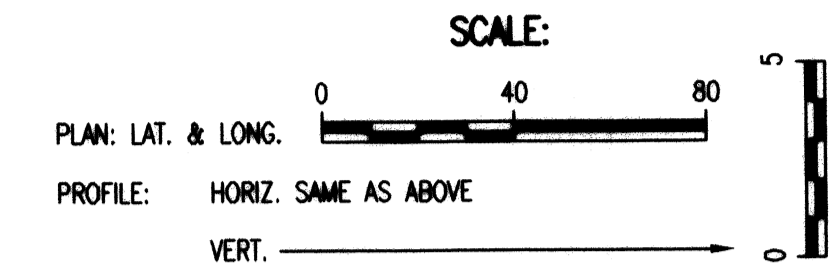
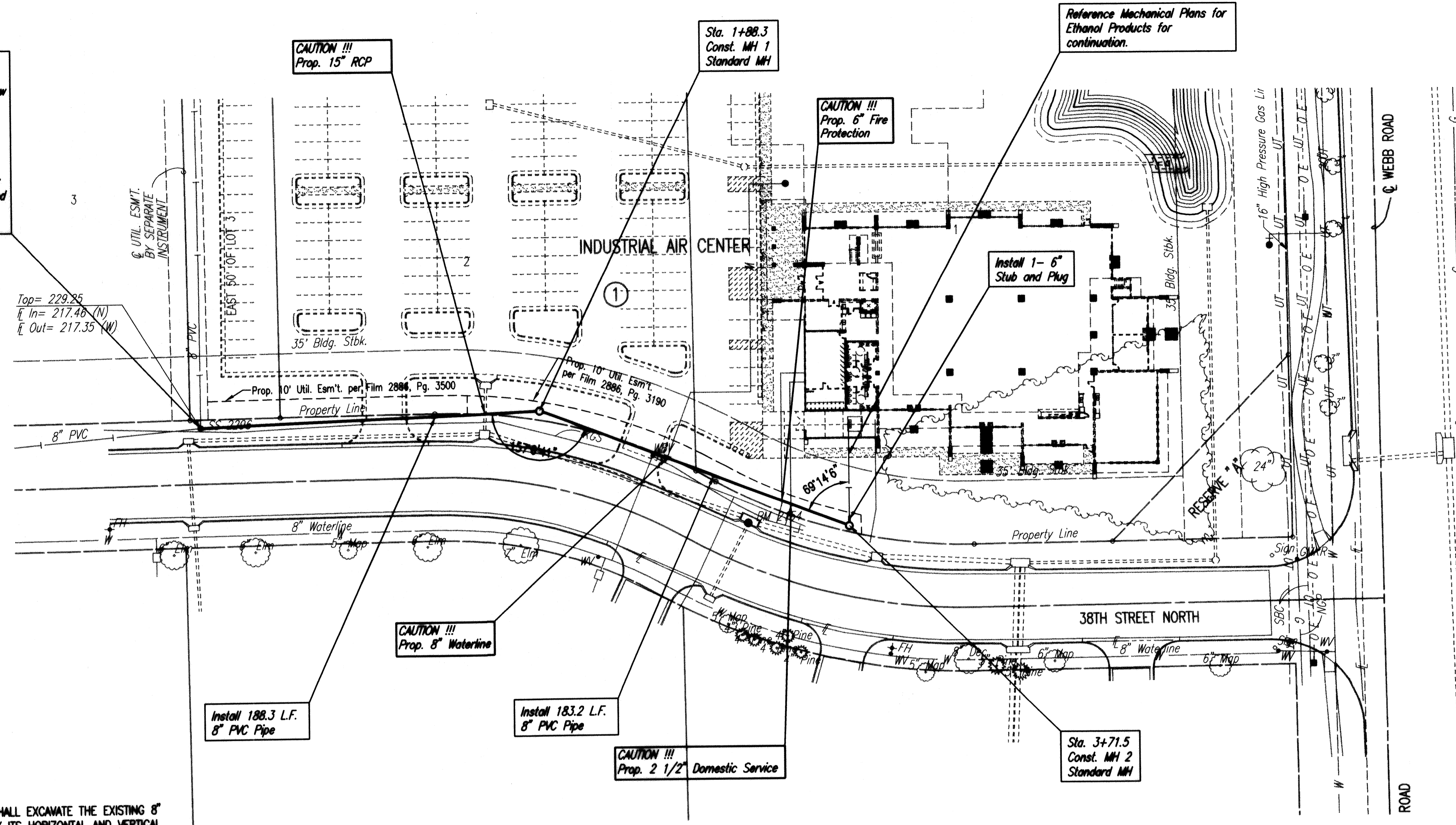


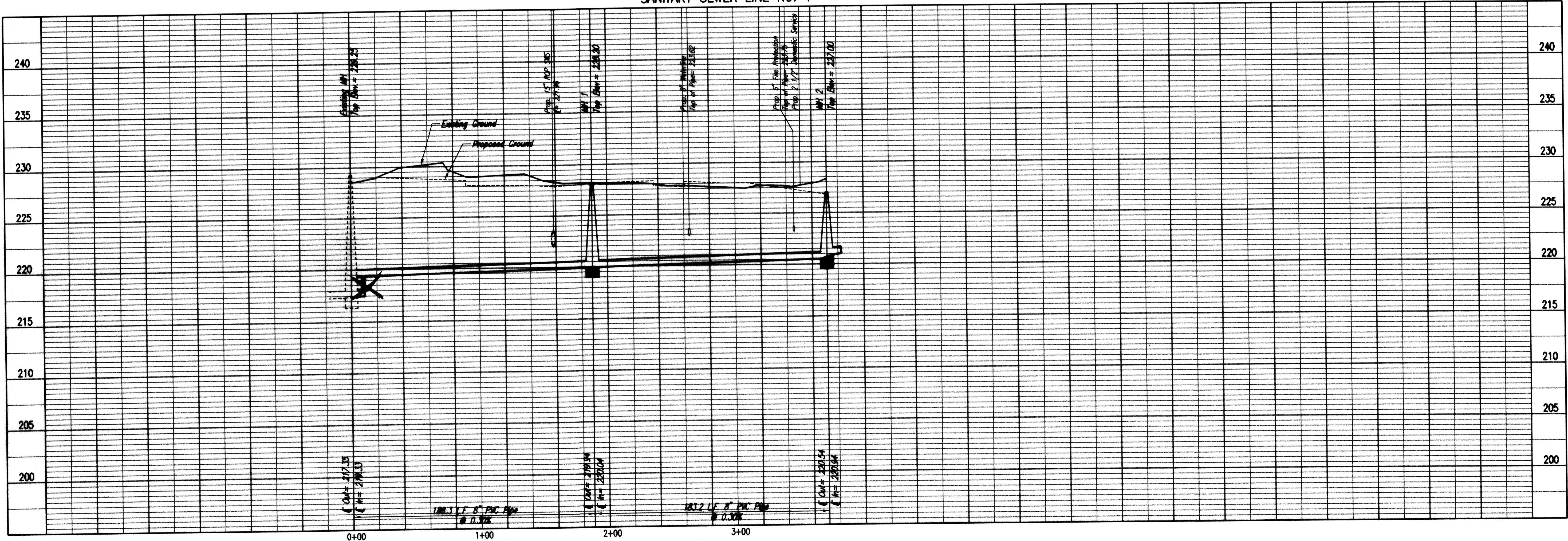
Sta. 0+00.0
 Core existing concrete MH wall and install outside drop connection. Seal new 8" Pipe to MH with an approved waterstop gasket and non-shrink grout. Construct a minimum of 3" Reinforced Concrete Encasement from MH wall. Reshape MH floor to provide smooth flow. Repair interior Linings/Coatings as necessary. This work shall be considered subsidiary to the price bid for pipe in place.*

Eliminate outside drop



* PRIOR TO BEGINNING CONSTRUCTION, THE CONTRACTOR SHALL EXCAVATE THE EXISTING 8" PVC PIPE AT SANITARY SEWER STATION 0+00.0 TO VERIFY ITS HORIZONTAL AND VERTICAL LOCATION. THE PIPE LOCATION SHALL BE REPORTED TO THE ENGINEER SO THAT ANY NECESSARY PLAN MODIFICATIONS CAN BE MADE. ANY ADDITIONAL LABOR OR MATERIALS NECESSARY TO COMPLETE THE CONNECTION SHALL BE CONSIDERED SUBSIDIARY TO THE PROJECT.

SANITARY SEWER LINE NO. 1



Architectural Development Services, L.L.C.
 P.O. Box 48405
 Wichita, Kansas 67201
 Phone: 316 938-4343
 Fax: 316 988-8084

WYNN RAY BIRN
 LICENSED PROFESSIONAL ENGINEER
 KANSAS
 2/21/07

Ethanol Products Corporate Headquarters
 38th and Webb Road
 Wichita, Kansas

prints issued
 3-9-07
 For Construction

project no.
 06122

drawn SAU checked GMB
SANITARY SEWER PLAN/PROFILE
C3.3
 of

Professional Engineering Consultants, P.A.
 303 S. CORCORAN • WICHITA, KANSAS 67202 • 316-262-2491 • FAX 316-262-3003
 www.perc.com

Save: 03-21-2007 5:42:40 PM by SWM
 Plot Scale: 1"=40' 03-21-2007 5:42:40 PM by SWM
 C:\2006\06207\Site\Civil\Private\Plans\Sanitary Sewer\06567-C3.3-Rev-SSPP1