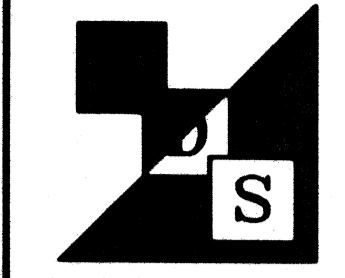
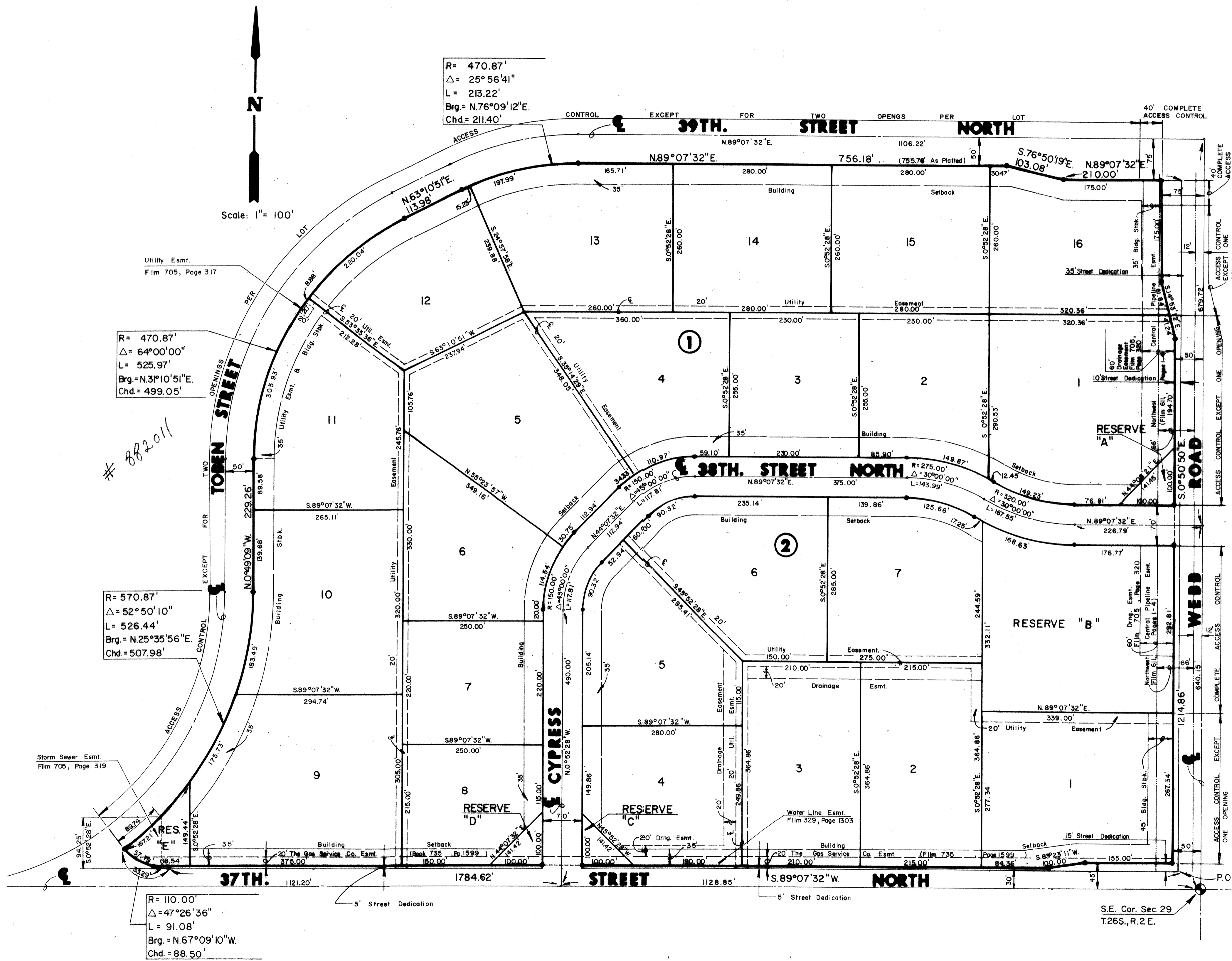


# FINAL PLAT OF INDUSTRIAL AIR CENTER

AN ADDITION TO WICHITA, SEDGWICK COUNTY, KANSAS



**Architectural Development Services, L.L.C.**  
 P.O. Box 46406  
 Wichita, Kansas 67201  
 Phone: 316 966-4343  
 Fax: 316 966-8064

**Ethanol Products  
Corporate Headquarters**

38th and Webb Road  
Wichita, Kansas

**prints issued**  
3-9-07  
For Construction

**project no.**  
06122

**drawn** SAU **check** GMB

**PLAT**

**C6.1**

of

Surveyed 05-01-2007 05:58:04 AM by SWM  
 Plotted 05-01-2007 05:58:04 PM by SWM  
 01/2008/06567.Site Cdn/06567-C6.1-Plat

**Professional Engineering Consultants, PA**  
 303 V. TORREY  
 WICHITA, KANSAS 67202 • 316-262-6761 • FAX 316-243-3003  
 www.paci.com