

GENERAL NOTES:

1. NGVD29 Datum.
2. Contractor will be required to provide a minimum advance notice of twenty-four (24) hours to utility companies prior to starting any excavation as follows:

Kansas One-Call 1-800-344-7233

The Contractor must notify the following in case of an emergency:

Cox Communications	282-4270 or 283-2061
Westar Energy	261-6824
Kansas Gas Service	832-3121
Aquila Networks	941-1608
AT&T	268-2102
City of Wichita Water Department	268-4908
City of Wichita Sewer Maintenance	268-4071

3. Existing utility lines and their location, as shown on the plans, represent the best information obtainable for design. The contractor will be required to work around existing utilities within the right-of-way which do not conflict with proposed construction.

4. Rubble from the removal of miscellaneous structures and excess excavation which is to be wasted shall be disposed of on sites to be provided by the Contractor. These sites shall be approved by the Engineer as to suitability, appearance and site location. Locations that, in the opinion of the Engineer, will leave an unsightly appearance will not be approved.

All disposal sites must be approved by the Kansas Department of Health and Environment. Material either stockpiled or disposed of in a flood plain would require a Kansas State Board of Agriculture permit. Any material dumped in waters of the United States or wetlands is subject to U.S. Corps of Engineers permitting regulations. Any material buried or stockpiled beyond approved construction limits would require additional archaeological investigations unless buried in a previously approved borrow location.

5. The Contractor shall be responsible for maintaining continuous flow of sewage through construction. Contractor's proposed method for maintaining sewage flow shall be approved by the Engineer. Cost of maintaining flow of sewage through construction will not be paid for directly and this cost shall be considered as subsidiary to the other pay items of the work.

6. The Contractor shall be responsible for preserving property irons. The Contractor will be required to re-establish any property irons which are damaged or destroyed by his construction operations. Such irons shall be re-established by a licensed land surveyor in accordance with state laws.

7. Trees and shrubs in public right-of-way which are in direct conflict with proposed new construction shall be removed by the Contractor with the Engineer's approval. Trees and shrubs which are not in direct conflict with the proposed new construction shall be saved and protected from damage.

8. Contractor shall vacuum test all manholes according to the City of Wichita standard specifications.

9. The tops of all Manholes to be set 0.4 feet above existing ground unless otherwise noted.

10. All areas disturbed by sewer construction, i.e. R/W, easements, and adjacent properties shall be restored with the same grass/sod as per AR 78.

11. Contractor shall maintain all existing BMP(s) on project site during construction. Contractor shall repair or replace any existing BMP(s) that are damaged (Cost subsidiary to site restoration). If BMP(s) were damaged prior to contractor beginning work on project, notify construction inspector or engineer.

12. A golf course contractor has constructed the cut and fills of the golf course and the lots. The finish ground will be constructed by the time of sanitary sewer construction for this project.

13. A golf cart path is to be constructed along the sewer in the back of Lots 7 - 47, Block 2 (by others).

**CONSTRUCTION PLANS
SANITARY SEWER EXTENSIONS
TERRADYNE WEST ADDITION**

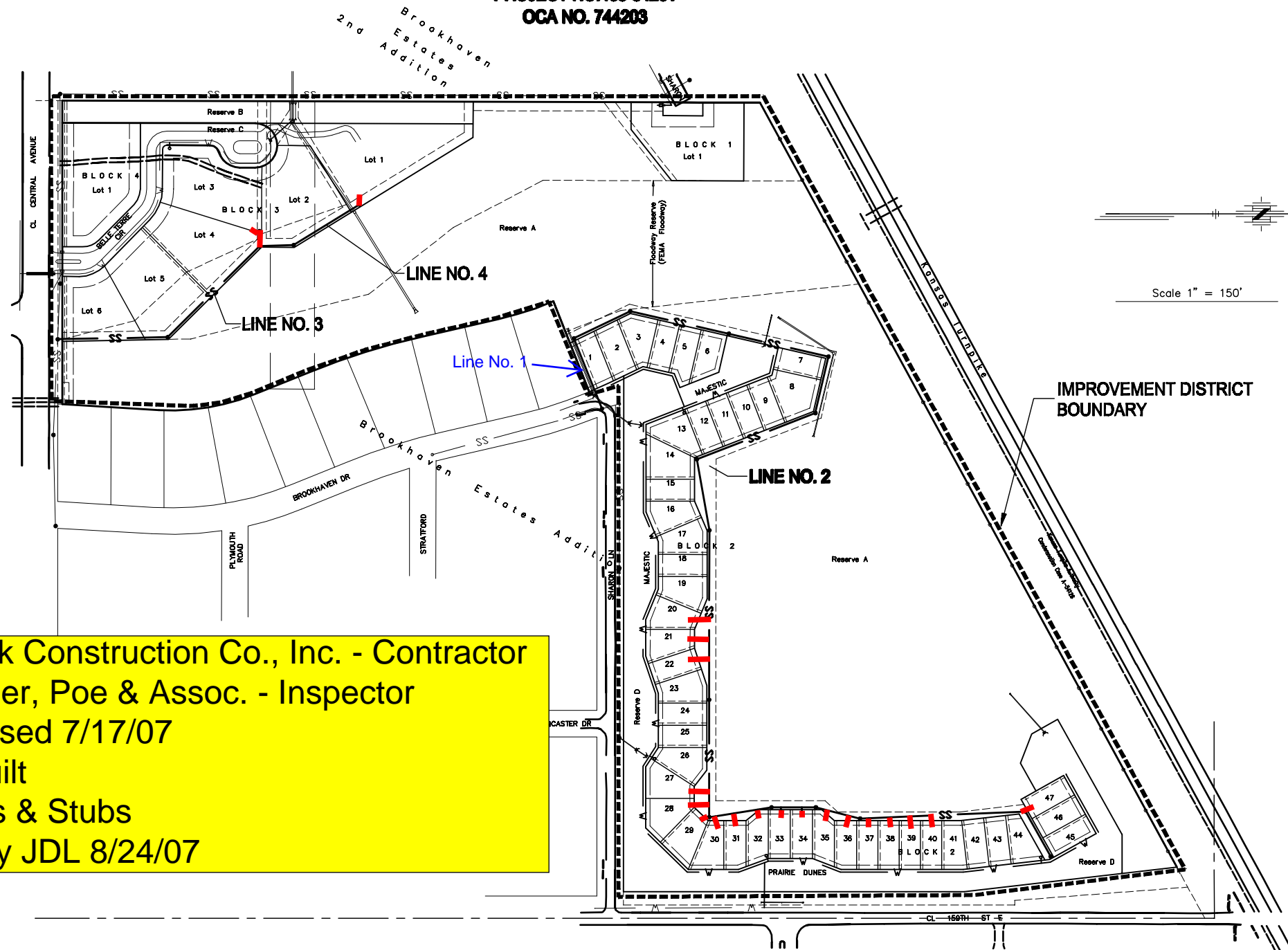
**TO
THE CITY OF WICHITA, KANSAS**

LATERAL 402, FOUR MILE CREEK SEWER

JAMES L. ARMOUR, P.E. - CITY ENGINEER

PROJECT NO. 468-84261

OCA NO. 744203



Nowak Construction Co., Inc. - Contractor
Koerner, Poe & Assoc. - Inspector
 Released 7/17/07
As-Built
Risers & Stubs
 .pdf by JDL 8/24/07

DECEMBER 2006
 PLANS PREPARED
 BY



POE & ASSOCIATES, INC.
 CONSULTING ENGINEERS
 3940 E. Central, Suite 200 - Wichita, KS 67208-4242
 Phone 316/685-4114 - FAX 316/685-4444



INDEX

TITLE SHEET	SHEET 1
LINE NO. 2	SHEET 2-4
LINE NO. 3 & 4	SHEET 5
TYPE "P" MANHOLE	SHEET 6
CLEANOUT DETAILS	SHEET 7
RISER DETAILS	SHEET 8
EROSION CONTROL DETAILS	SHEET 9-12
COORDINATE POINTS LIST	SHEET 13
TERRADYNE WEST PLAT	SHEET 14-15

BENCH MARKS

1. Square cut on top of curb at N.W. corner concrete parking lot at S.W. corner Terradyne 2nd Addition. Elevation 1332.42
2. Square cut in center of south end of concrete walk at information building N. side Terradyne at N.E. corner Terradyne 2nd Addition. Elevation 1341.06