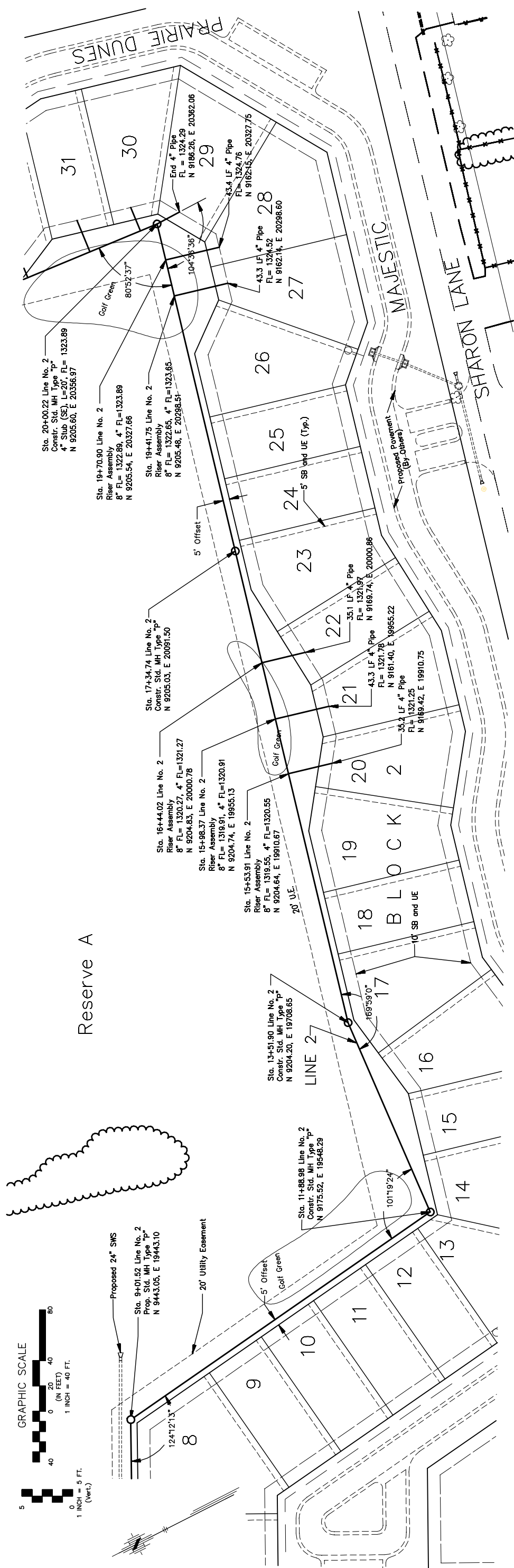
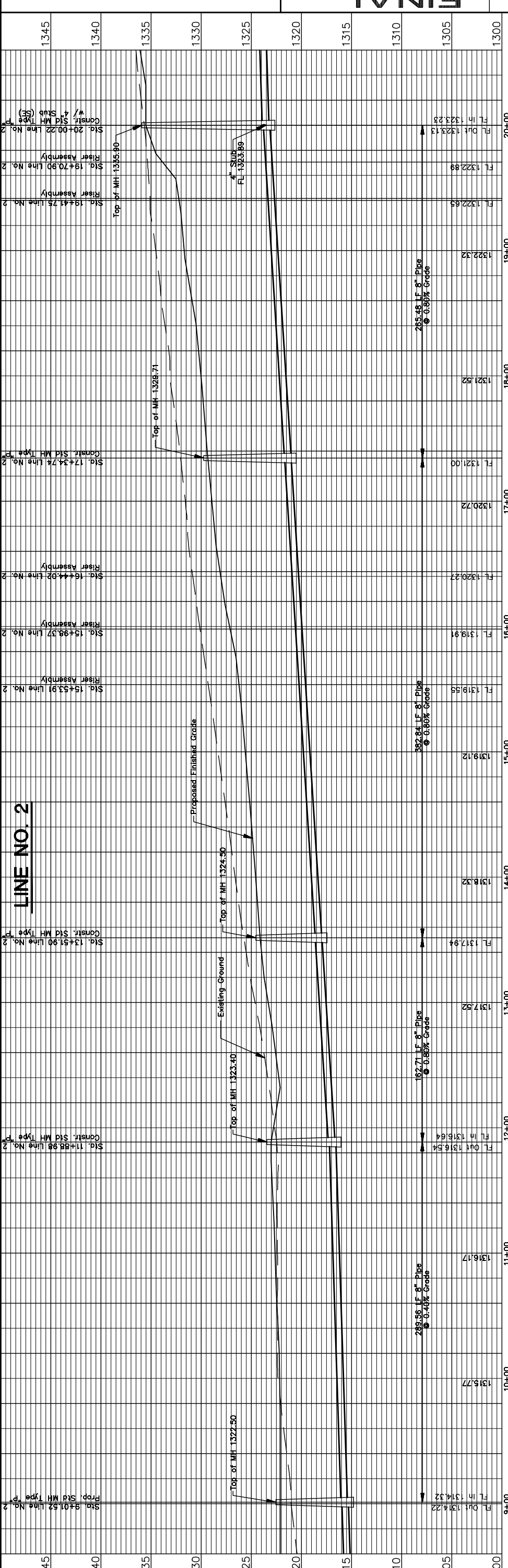


Reserve A



LINE NO. 2



FINAL

Designed By: J. Ubert / J. Dickman
 Drawn By: M. Tucker
 P.O. Job No.: 1809
 Date: December 2006



POE & ASSOCIATES, INC.
 CONSULTING ENGINEERS
 3940 E. Central, Suite 200 - Wichita, KS 67208-0242
 Phone 316/685-4114 - FAX 316/685-4444

TERADYNE WEST ADDITION
 SANITARY SEWER LINE NO. 2
 CITY OF WICHITA, KANSAS
 JAMES L. ARMOUR, P.E. - CITY ENGINEER
 Proj. No. 468-84261 O.C.A.# 744203

No.	Date	By	Approved	Revision