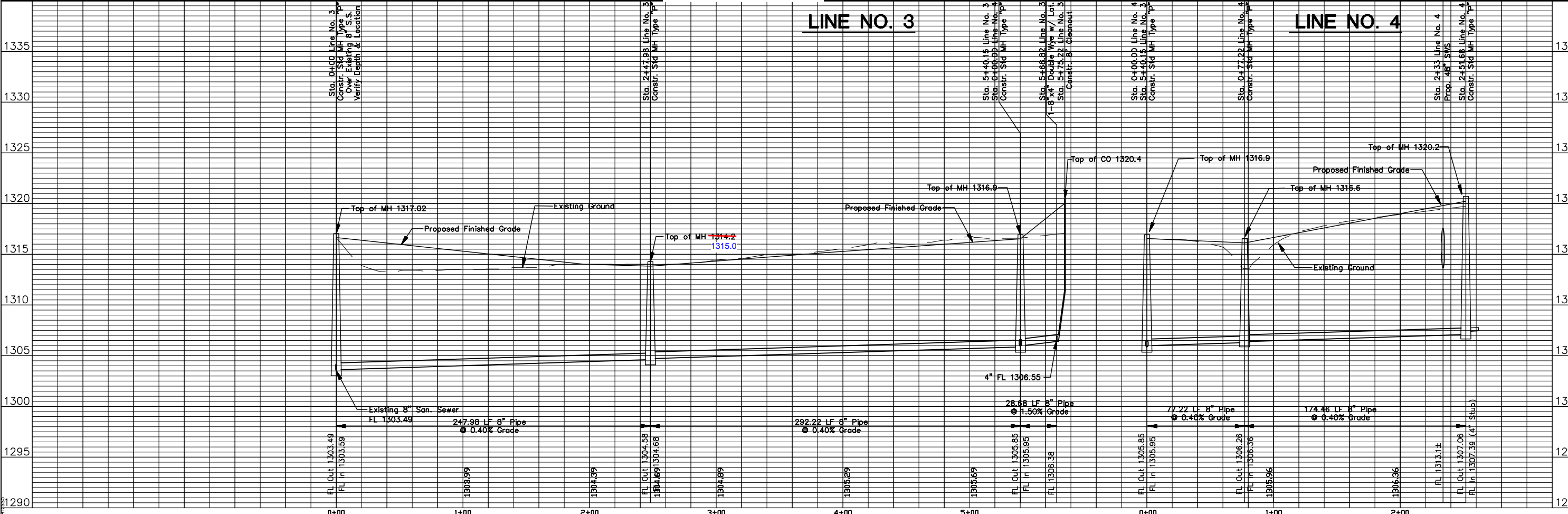
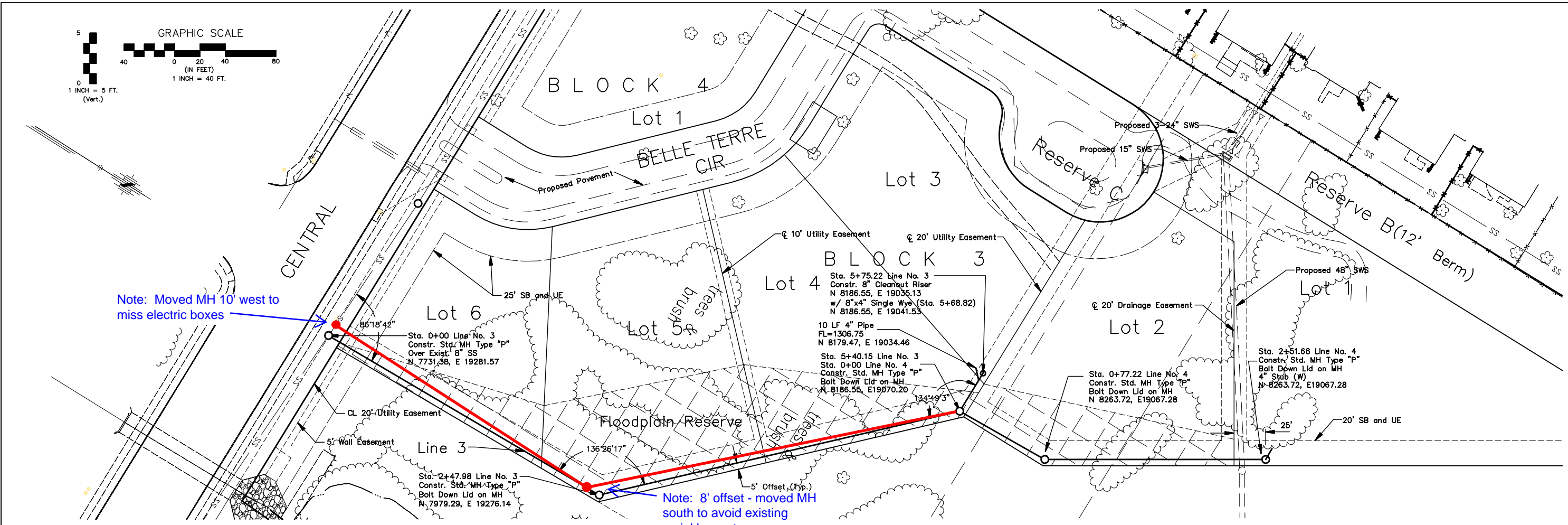


Note: Moved MH 10' west to miss electric boxes

Note: 8' offset - moved MH south to avoid existing sprinkler system



No.	Date	By	Approved	Revision

TERRADYNE WEST ADDITION
LATERAL 402, FOUR MILE CREEK SEWER
SANITARY SEWER LINE NO. 3
CITY OF WICHITA, KANSAS
JAMES L. ARMOUR, P.E. - CITY ENGINEER
Proj. No. 468-84261 O.C.A.# 744203

POE & ASSOCIATES, INC.
CONSULTING ENGINEERS
3940 E. Central, Suite 210 • Wichita, KS 67208-0902
Phone 316.688-4114 • FAX 316.688-4444

FINAL

Designed By: J. Ubert / J. Dickman
Drawn By: M. Tucker
Poe Job No.: 1809
Date: December 2006

5 of 15
Sheet