

TERRADYNE WEST

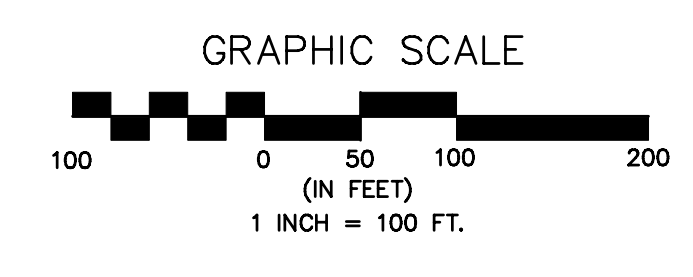
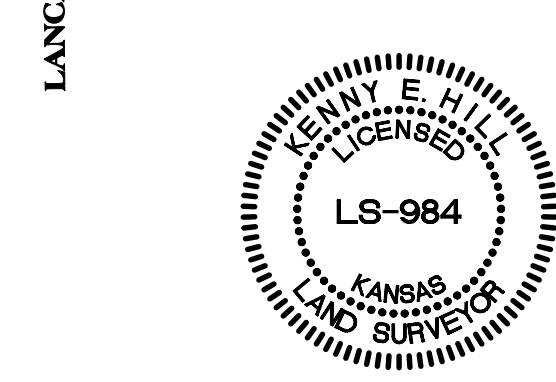
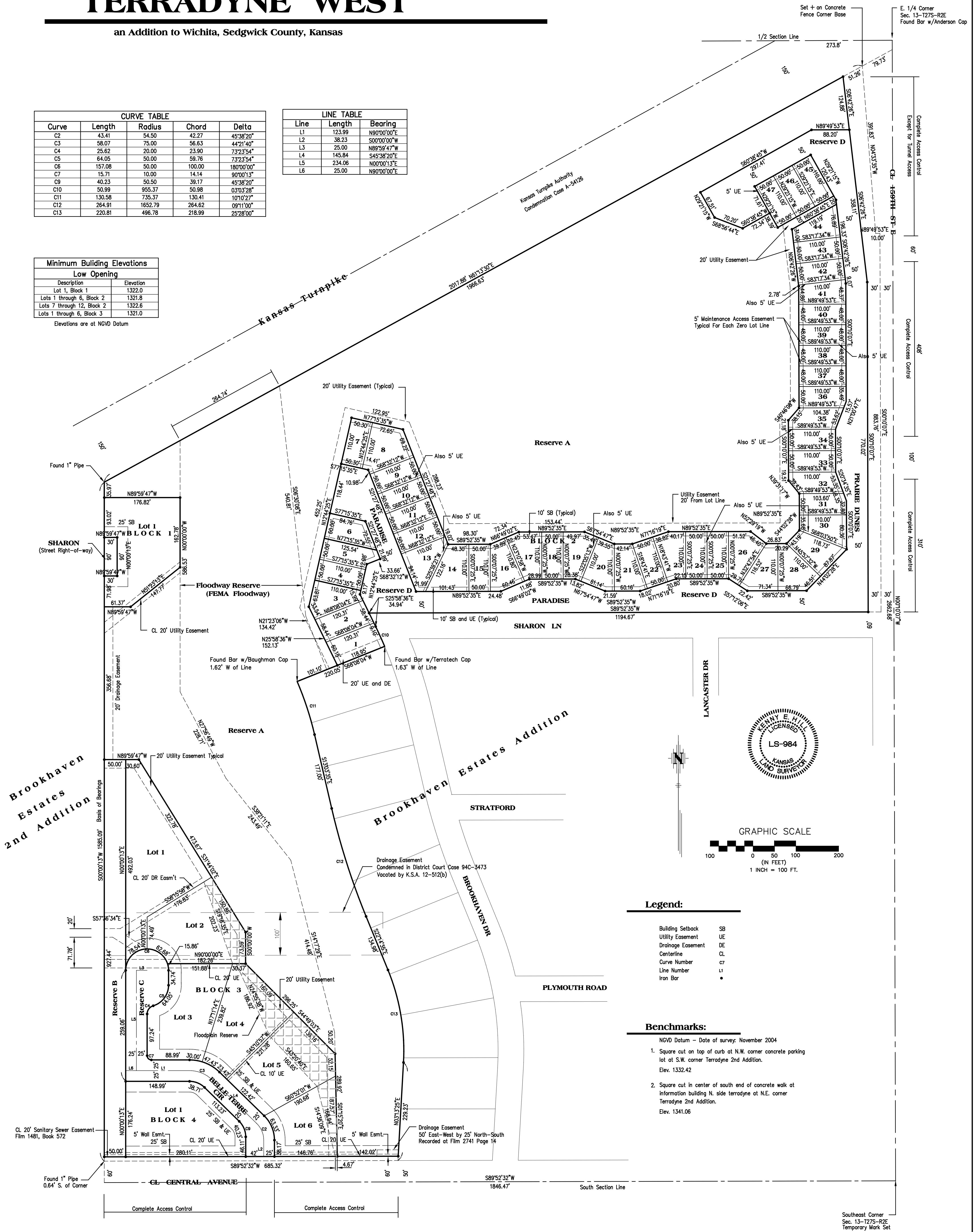
an Addition to Wichita, Sedgwick County, Kansas

CURVE TABLE				
Curve	Length	Radius	Chord	Delta
C2	43.41	54.50	42.27	45°38'20"
C3	58.07	75.00	56.63	44°21'40"
C4	25.62	20.00	23.90	73°23'54"
C5	64.05	50.00	59.76	73°23'54"
C6	157.08	50.00	100.00	180°00'00"
C7	15.71	10.00	14.14	90°00'13"
C9	40.23	50.50	39.17	45°38'20"
C10	50.99	955.37	50.98	0°30'28"
C11	130.58	735.37	130.41	1°10'27"
C12	264.91	1652.79	264.62	0°9'11"
C13	220.81	496.78	218.99	25°28'00"

LINE TABLE		
Line	Length	Bearing
L1	123.99	N90°00'00"E
L2	38.23	S00°00'00"W
L3	25.00	N89°59'47"W
L4	145.84	S45°38'20"E
L5	234.06	N00°00'13"E
L6	25.00	N90°00'00"E

Minimum Building Elevations	
Low Opening	
Description	Elevation
Lot 1, Block 1	1322.0
Lots 1 through 6, Block 2	1321.8
Lots 7 through 12, Block 2	1322.6
Lots 1 through 6, Block 3	1321.0

Elevations are at NGVD Datum



- Legend:**
- Building Setback SB
 - Utility Easement UE
 - Drainage Easement DE
 - Centerline CL
 - Curve Number c7
 - Line Number L1
 - Iron Bar •

- Benchmarks:**
- NGVD Datum - Date of survey: November 2004
 - 1. Square cut on top of curb at N.W. corner concrete parking lot at S.W. corner Terradyne 2nd Addition. Elev. 1332.42
 - 2. Square cut in center of south end of concrete walk at information building N. side terradyne at N.E. corner Terradyne 2nd Addition. Elev. 1341.06