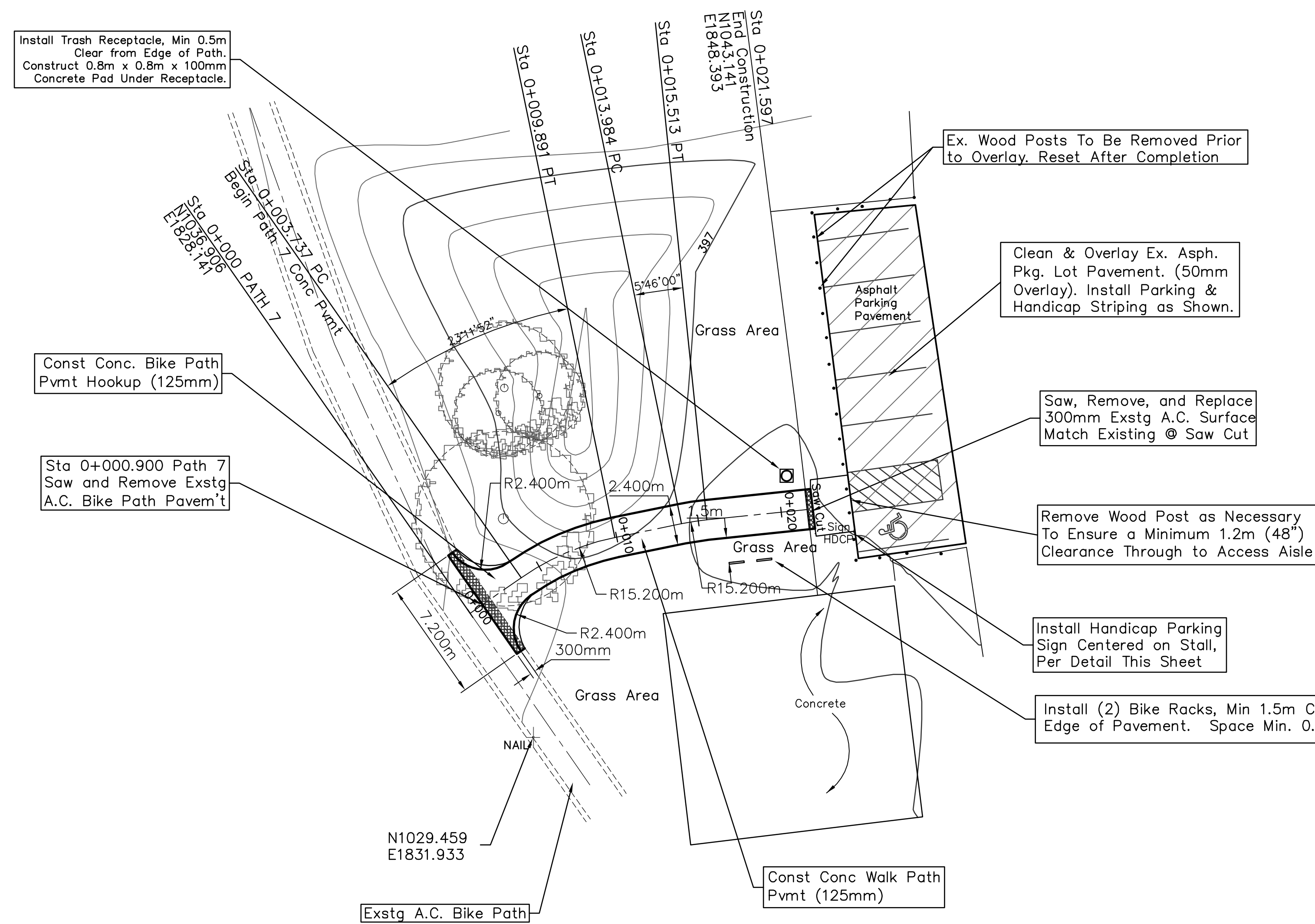
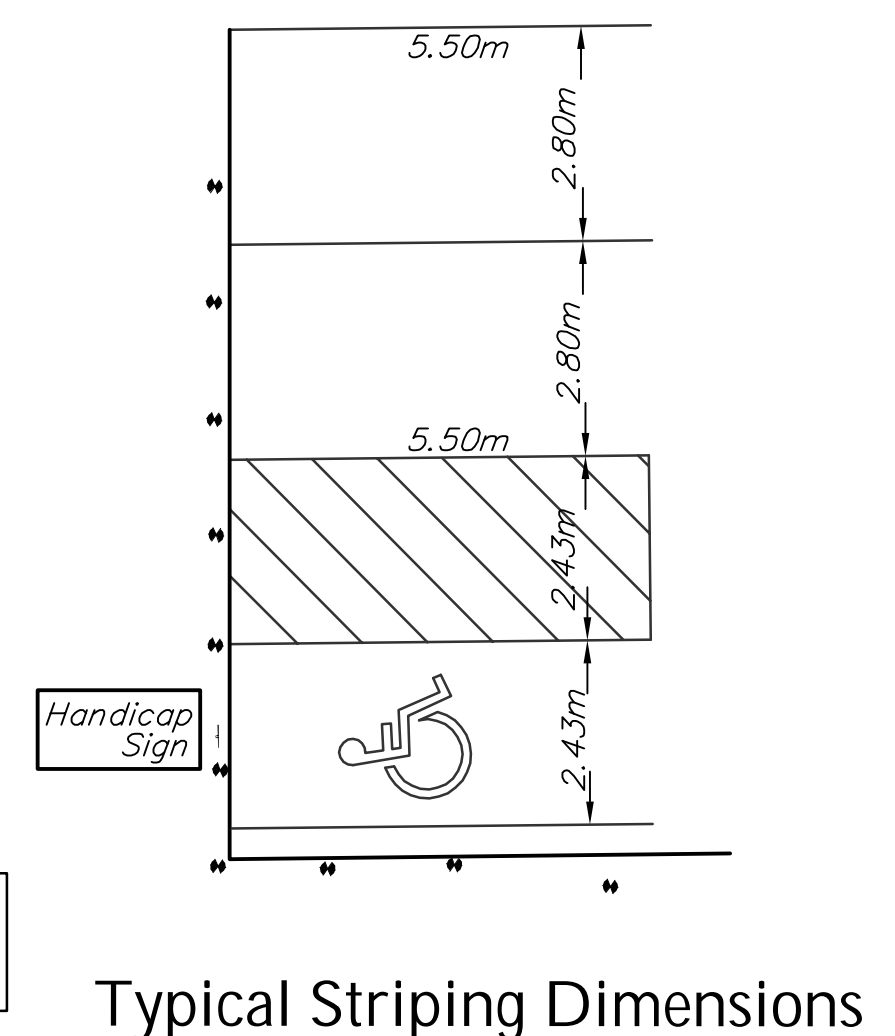


### SIMM PARK

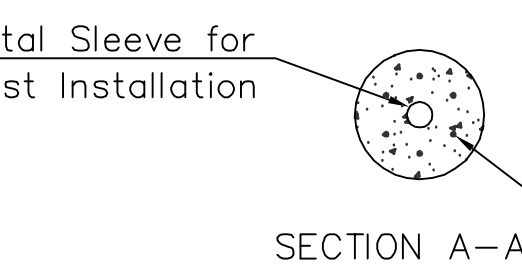
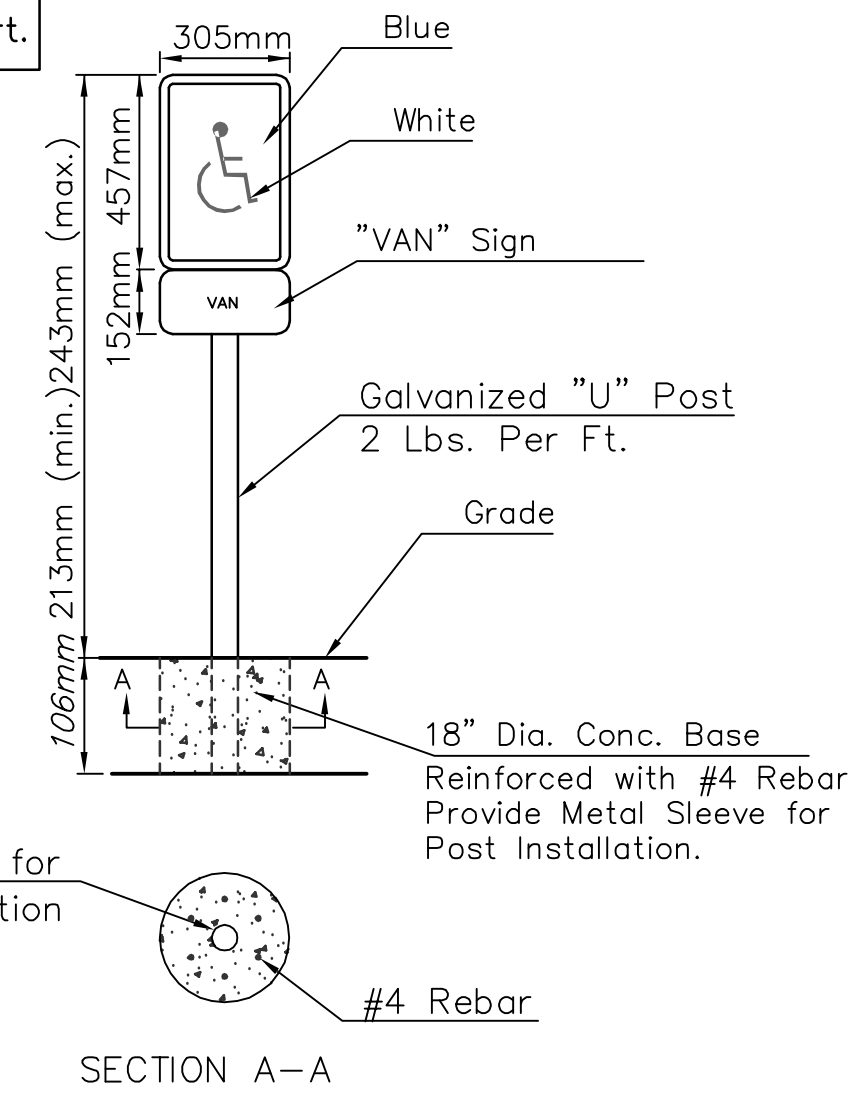


### PATH NO 7

Scale 1:200



SUMMARY OF QUANTITIES (THIS SHEET ONLY)			
BID ITEM	QUANTITY	UNIT	REMARKS
125 mm Concrete Pavement	54	sq. meters	Includes Reinforcement
Asphalt Pavement Removal	5	sq. meters	Includes Sawcutting
50mm Asphalt Overlay Pavement	130	sq. meters	
100 mm (White) Parking Lot Striping	65	meters	
Handicap Stall Signage	1	ea.	
Handicap Marking Symbol	1	ea.	
Trash Receptacle	1	ea.	



Typ. Handicap Parking Sign

### Pavement Marking General Notes

- All pavement markings shall conform to the current standards set forth in the latest publication of the "Manual on Uniform Traffic Control Devices".
- All pavement markings shall be 'Cold-laid Plastic Tape' type or 'Thermoplastic', meeting the required specifications of the Kansas Department of Transportation (KDOT).
- Installation of marking tapes on other than new asphaltic concrete pavement (i.e. concrete pavements; existing A.C. surfaces, etc.) shall be accomplished in accordance with installation specifications for cold-laid markings.
- Minimum distance between pavement joints, edge of paver (crosswalks, etc.) and the new pavement markings shall be 51 millimeters (51mm) minimum, and 76 millimeters (76mm) maximum.

