

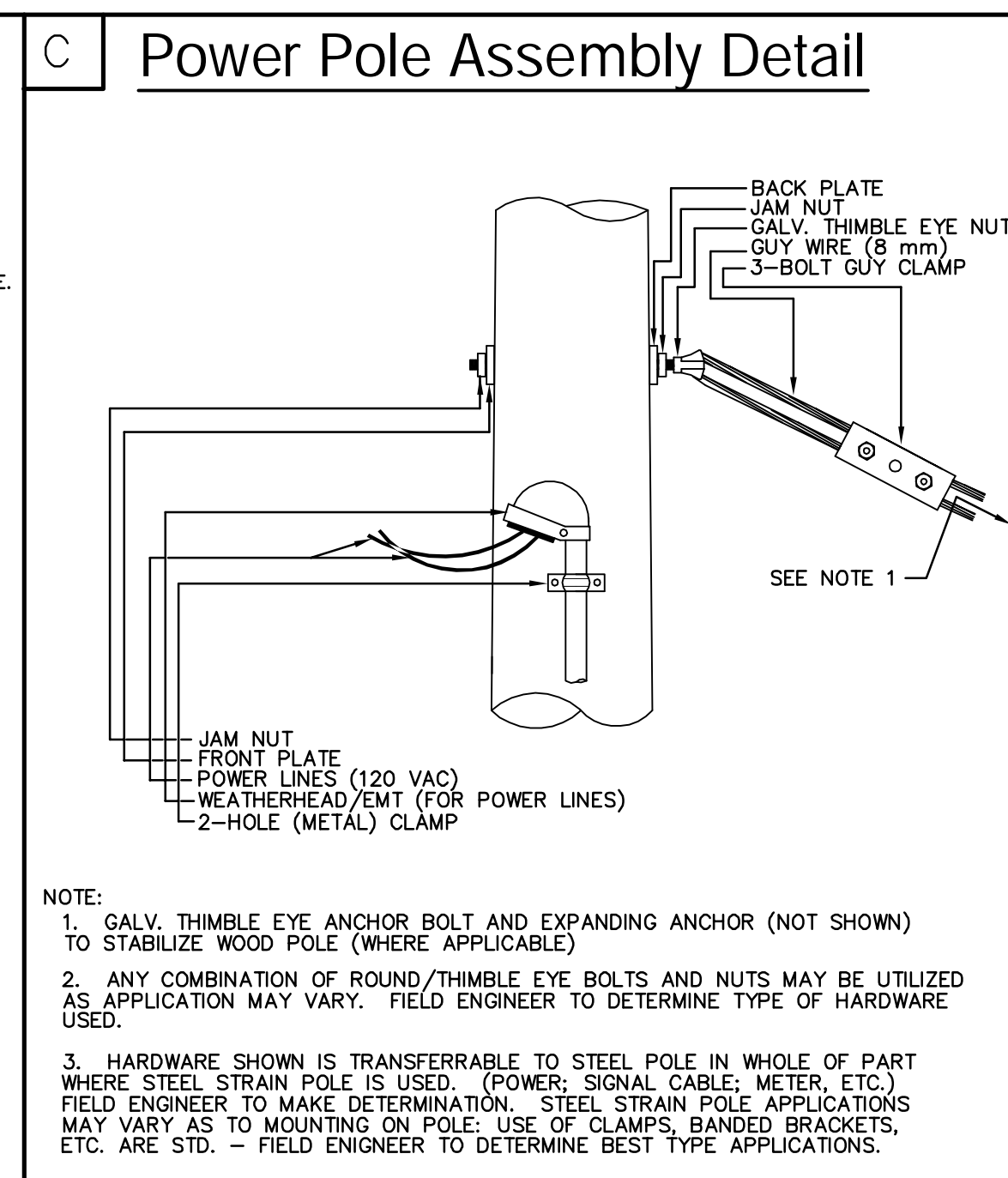
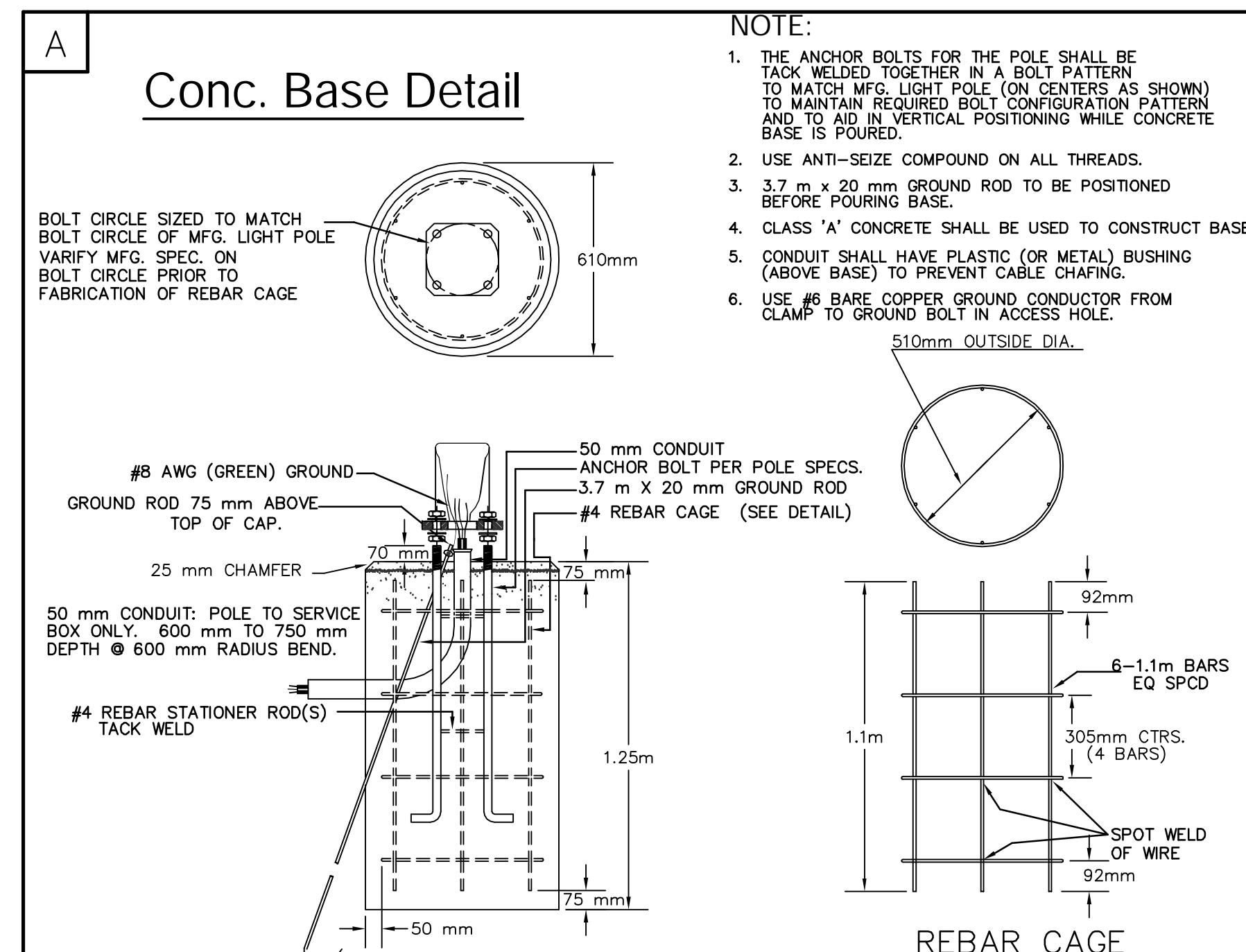
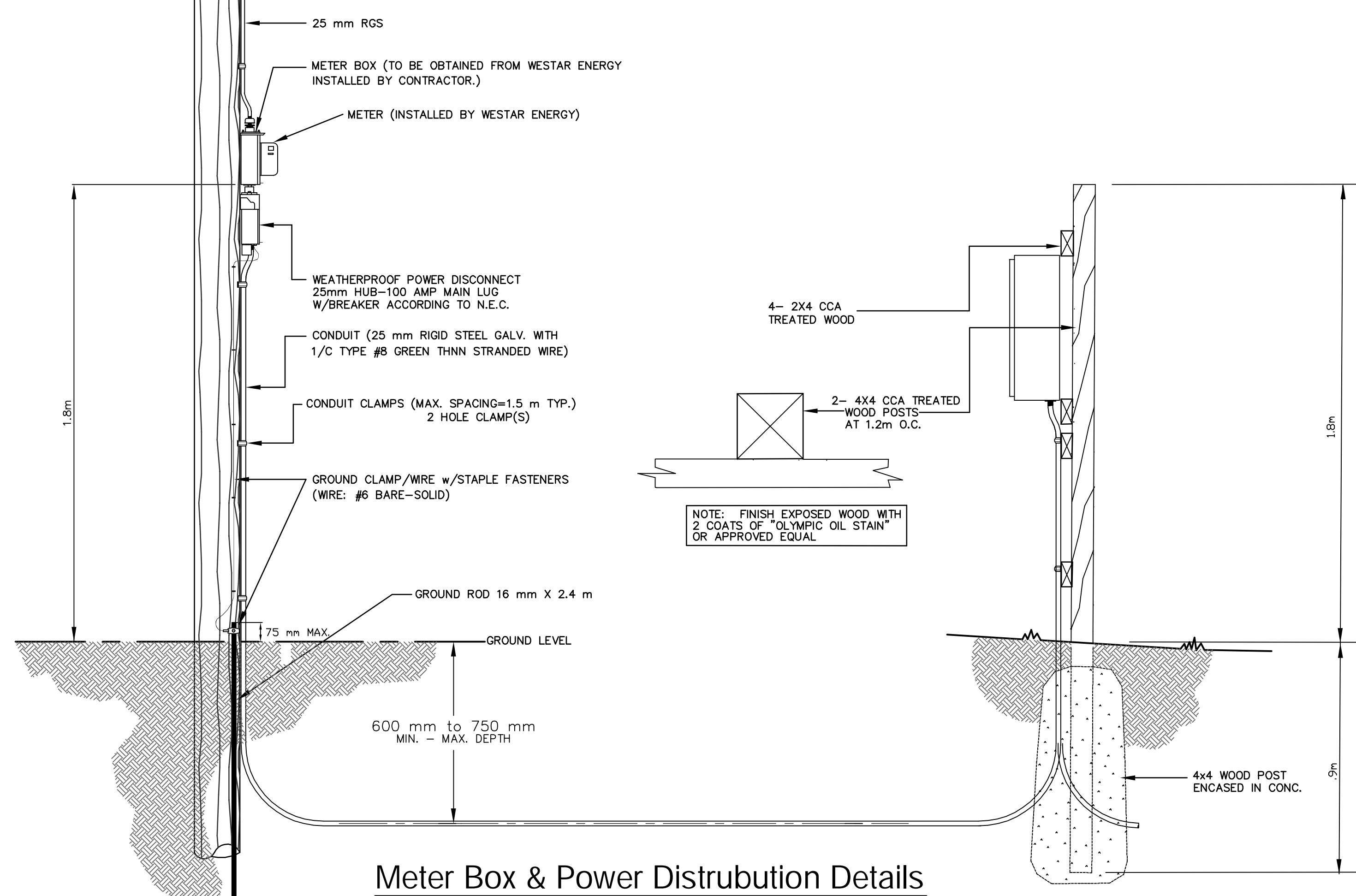
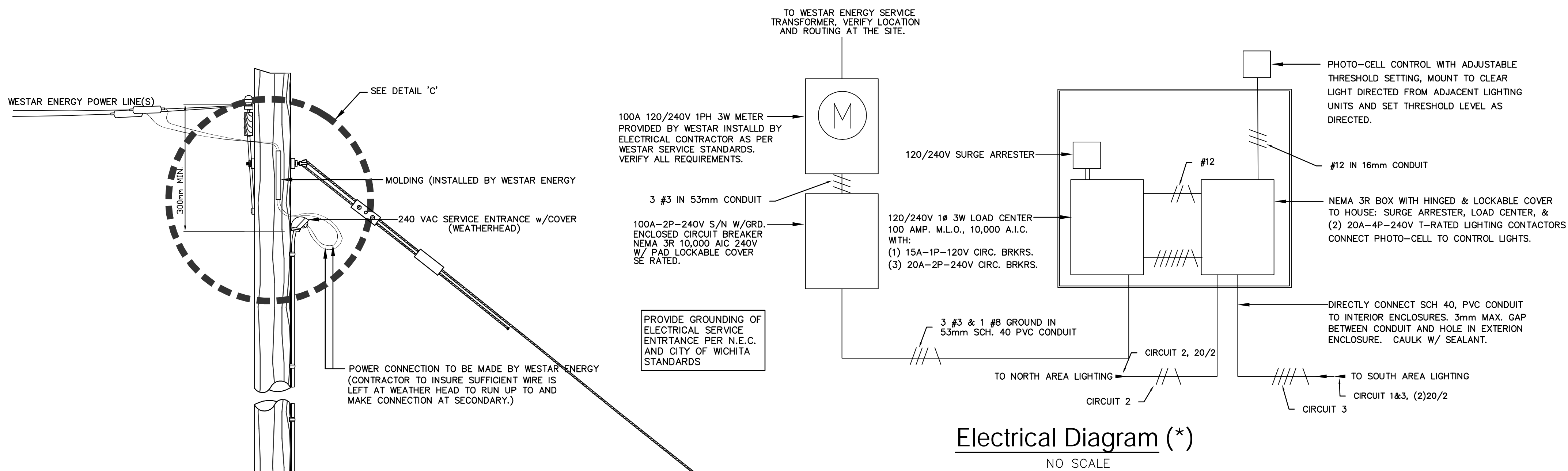
FHWA REGION NO.	STATE	PROJECT NO.	FISCAL YEAR	SHEET NO.	TOTAL SHEETS
7	KANSAS	87TE-0158-01	2001	18	26

ELECTRICAL CIRCUIT LEGEND

CIRCUIT #	DESCRIPTION
1	2#8 & 1#10 GROUND IN 27 mm SCH. 40 PVC CONDUIT
2	2#6 & 1#10 GROUND IN 53 mm SCH. 40 PVC CONDUIT
3	4#6 & 1#10 GROUND IN 53 mm SCH. 40 PVC CONDUIT

GENERAL NOTES

- All Work Shall Comply With Local, State, and National Codes. All Materials Shall Be U.L. Listed and C.S.A. Certified.
- The Electrical Contractor Shall Secure and Pay for All Permits, Fees, Inspections and Certificates Required.
- The Electrical Contractor Shall Furnish All Labor, Material, Tools, Transportation, and Equipment Required for the Complete, Proper and Substantial Installation of all Electrical Work Indicated or Required for a Complete Working Installation of all Electrical Systems.
- The Electrical Contractor Shall Include in the Electrical Bid: All Associated Charges for the Electrical Services from the Local Utilities.
- Straight Runs Underground / In Slab Conduit May be Schedule 40 P.V.C. 19mm Minimum with Steel Ells, Bends and Riser. All Riser Penetrating Slab or Exiting from Earth Shall be Gal. Rigid Steel. No Exceptions.
- All Line Voltage Wiring Shall Be Copper In Steel Conduit Unless Specifically Noted Otherwise (Ref. Note 5). Each Conduit Containing Line Voltage Shall Contain a Green, Insulated Ground Conductor. Thin Wall Conduit Shall Not be Installed for Exterior Use.
- The Electrical Contractor Shall Visit Site to Determine: 1.) Existing Conditions. 2.) The Extent of Demolition. Any Conflicts Between Plans/Specifications and Actual Existing Conditions that Affect Constructability, Shall be Brought to the Attention of the Engineer Prior to Bid. No Exceptions.
- The Electrical Contractor Shall Submit the Following Information Along With Any Other Information Required By Other Sections of The Contract Document: Conduit, Connectors, Wire, Fuses, Fuseholders, Light Fixtures, Poles, Backfill Material, Wire Nuts, Panels, Contactors, Enclosures.
- A UL-Listed Lightning Arrestor Shall be Installed Between the Disconnect Switch and the Control Panel for Voltage Surge Protection of all Secondary Wiring.
- The Electrical Contractor Shall Provide Distribution System and Area Lighting Controls Located in a NEMA-Rated Rainproof Enclosure with a Locking Cover.
- The Electrical Contractor Shall Provide and Install All Poles and Light Fixtures as Indicated.
- The Electrical Contractor Shall Coordinate with All Trades and Existing Utilities.
- Schematic shown is for bidding purposes ONLY. Contractor to verify actual wiring and electrical service requirements with manufacturer prior to bidding and construction.
- The Lump Sum Price Bid for Installing the Area Lighting Complete in Place and Operational Shall INCLUDE but not be Limited to: Concrete Base, Reinforcement, Ground Rods, Conduit, Wiring, Control Panel, Electrical Disconnect, Installation, and all Other Incidentals Necessary.
- Light Poles & Fixtures shall Match Existing Type as Installed with City of Wichita Project: LANDSCAPING & BIKEPATH IMPROVEMENTS from SENECA & McLEAN to MERIDIAN & McLEAN (City of Wichita Project No. 472-82799.) Contact Larry Hoetmer for Pole Type and Lighting. Light Fixtures to be 240 Volt.



DESIGN	DRAWN	APPROVED	DATE	SCALE	BAUGHMAN NO
TCA/JFB	TCA	JFB	NOV 06	USER	99 12 E575

PROJECT NUMBER: 87 TE-0158-01
SHEET NAME: 18_Elect
ENGINEERING DIRECTORY: Arkriver/Nov 06 Revisions

CAPITAL IMPROVEMENT PROJECT
ARKANSAS RIVER BIKE PATH ENHANCEMENT ELECTRICAL DETAILS
CENTRAL TO THIRTEENTH ST ALONG McLEAN BLVD

Baughman Company, P.A.
315 Ellis St. Wichita, KS 67211 P 316-262-7271 F 316-262-0149

ENGINEERING | SURVEYING | PLANNING | LANDSCAPE ARCHITECTURE

SHEET 18 OF 26