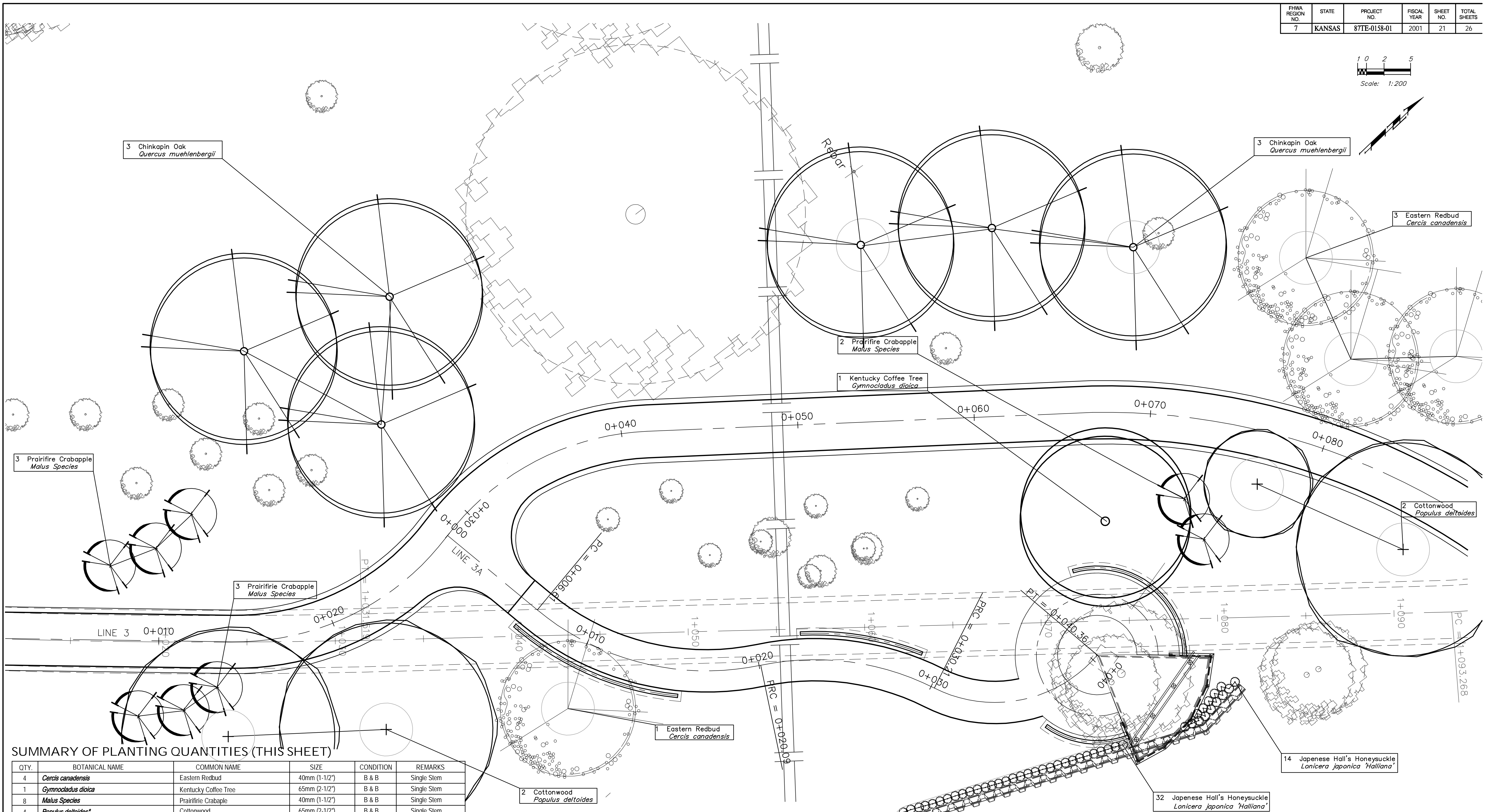
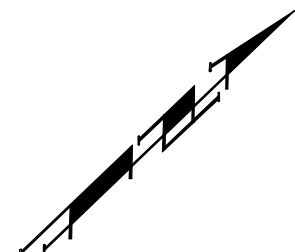
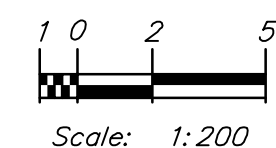


FHWA REGION NO.	STATE	PROJECT NO.	FISCAL YEAR	SHEET NO.	TOTAL SHEETS
7	KANSAS	87TE-0158-01	2001	21	26



SUMMARY OF PLANTING QUANTITIES (THIS SHEET)

QTY.	BOTANICAL NAME	COMMON NAME	SIZE	CONDITION	REMARKS
4	<i>Cercis canadensis</i>	Eastern Redbud	40mm (1-1/2")	B & B	Single Stem
1	<i>Gymnocladus dioica</i>	Kentucky Coffee Tree	65mm (2-1/2")	B & B	Single Stem
8	<i>Malus Species</i>	Prairie Crabapple	40mm (1-1/2")	B & B	Single Stem
4	<i>Populus deltoides</i> *	Cottonwood	65mm (2-1/2")	B & B	Single Stem
6	<i>Quercus muehlenbergii</i>	Chinquapin Oak	65mm (2-1/2")	B & B	Single Stem
46	<i>Lonicera japonica 'Halliana'</i>	Japanese Hall's Honeysuckle	4 Litre (1 gal.)	Container	Healthy & Full

*To be provided by C.O.W. Parks Dept.
Landscape Contractor to Install Hardwood Mulch at a minimum Depth of 3"

PROJECT NUMBER 87 TE - 0158 - 01		SHEET NAME 21_Lscape02		ENGINEERING DIRECTORY Arkriver/Nov 06 Revisions	
DESIGN STAFF	DRAWN STAFF	APPROVED	DATE NOV 06	SCALE 1:200 SI	BAUGHMAN NO 99 12 E575

CAPITAL IMPROVEMENT PROJECT
LANDSCAPING PLANS
PATH NO. 3
 CENTRAL TO 13th ST ALONG McLEAN BLVD

B **Baughman Company, P.A.**
 315 Ellis St. Wichita, KS 67211 P 316-262-7271 F 316-262-0149
 ENGINEERING | SURVEYING | PLANNING | LANDSCAPE ARCHITECTURE

