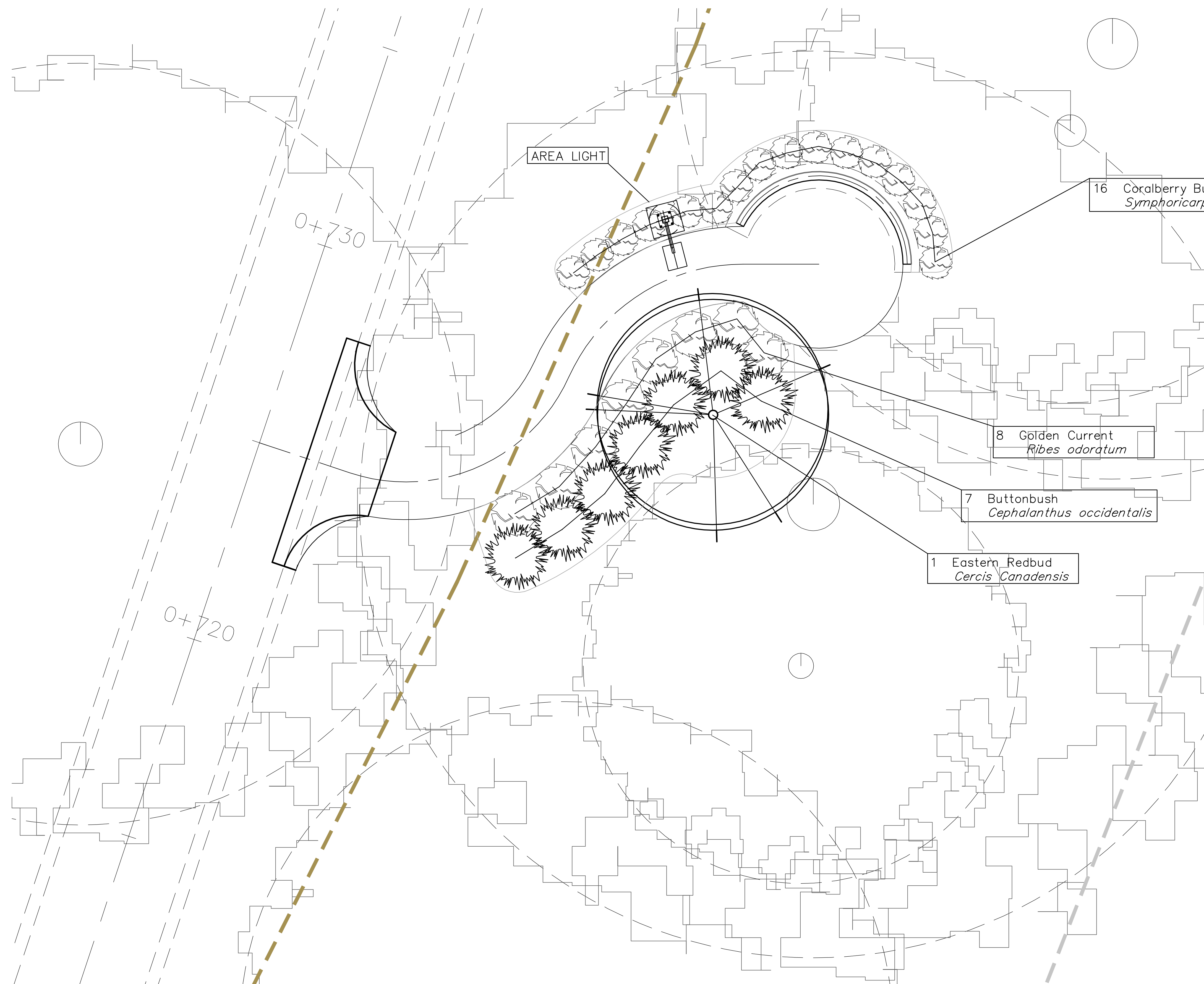


Scale: 1:200



SUMMARY OF PLANTING QUANTITIES (THIS SHEET)

QTY.	BOTANICAL NAME	COMMON NAME	SIZE	CONDITION	REMARKS
1	<i>Cercis canadensis</i>	Eastern Redbud	40mm (1-1/2")	B & B	Single Stem
7	<i>Cephalanthus occidentalis</i>	Buttonbush	19 Litre (5 gal.)	Container	Healthy & Full
8	<i>Ribes odoratum</i>	Golden Current	19 Litre (5 gal.)	Container	Healthy & Full
16	<i>Symphoricarpos orbiculatus</i>	Coralberry Buckbrush	7.5 Litre (2 gal.)	Container	Healthy & Full

Landscape Contractor to Install Hardwood Mulch at a minimum Depth of 3"



PROJECT NUMBER 87 TE - 0158 - 01	SHEET NAME 22_Lscape04	ENGINEERING DIRECTORY Arkriver/Nov 06 Revisions
DESIGN STAFF	DRAWN STAFF	APPROVED
DATE MAY 05	SCALE 1:100 SI	BAUGHMAN NO 99 12 E575

CAPITAL IMPROVEMENT PROJECT
LANDSCAPE PLANS
REST AREA NO. 2, PATH NO. 4
CENTRAL TO 13th ST ALONG McLEAN BLVD

B Baughman Company, P.A.
315 Ellis St. Wichita, KS 67211 P 316-262-7271 F 316-262-0149
ENGINEERING | SURVEYING | PLANNING | LANDSCAPE ARCHITECTURE

SHEET
22
OF
26