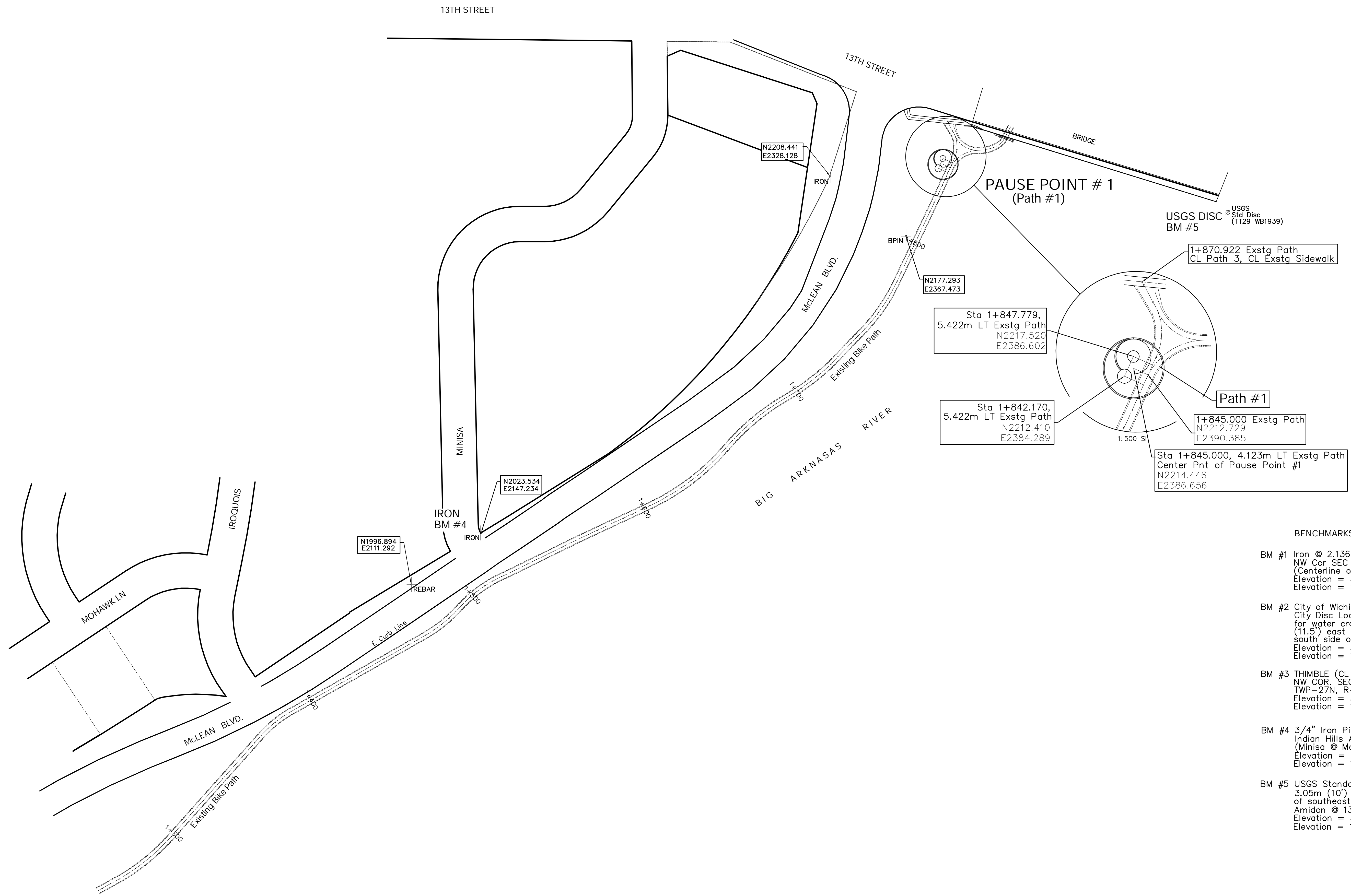
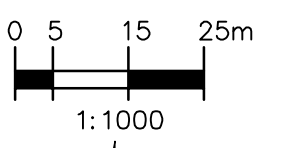


FHWA REGION NO.	STATE	PROJECT NO.	FISCAL YEAR	SHEET NO.	TOTAL SHEETS
7	KANSAS	87TE-0158-01	2001	5	26



- BENCHMARKS:**
- BM #1 Iron @ 2.136m E and 5.105m S Thimble in NW Cor SEC 19, TWP 27 N, R 1 E. (Centerline of both Meridian and Central)
Elevation = 397.371 S.I. Units
Elevation = 1303.71 MSL Datum
 - BM #2 City of Wichita Benchmark Disc
City Disc Located in SW corner of concrete vault for water crossing east side McLean Blvd 3.507m (11.5') east of back of curb, in line with High Edge south side of 9th Street extended.
Elevation = 397.538 S.I. Units
Elevation = 1304.27 MSL Datum
 - BM #3 THIMBLE (CL Intersection Edwards @ 9th St)
NW COR. SEC. 19
TWP-27N, R-1E
Elevation = 397.569 S.I. Units
Elevation = 1304.36 MSL Datum
 - BM #4 3/4" Iron Pipe SW Cor Lot 10
Indian Hills Addition (Block Corner)
(Minisa @ McLean Blvd)
Elevation = 397.379 S.I. Units
Elevation = 1303.74 MSL Datum
 - BM #5 USGS Standard Disc, stamped TT29 WB1939,
3.05m (10') south of sidewalk and 7.62m (25') east of southeast end of Big Arkansas River bridge handrail
Amidon @ 13th Street
Elevation = 399.974 S.I. Units
Elevation = 1312.25 MSL Datum



PROJECT NUMBER 87 TE - 0158 - 01		SHEET NAME 05_KEYSHOT3		ENGINEERING DIRECTORY Arkriver/Nov 06 Revisions		CAPITAL IMPROVEMENT PROJECT ARKANSAS RIVER BIKE PATH ENHANCEMENT KEY SHEET No. 3 CENTRAL TO THIRTEENTH ST ALONG MCLEAN BLVD		 315 Ellis St. Wichita, KS 67211 P 316-262-7271 F 316-262-0149 ENGINEERING SURVEYING PLANNING LANDSCAPE ARCHITECTURE		SHEET 5 OF 26
DESIGN STAFF	DRAWN STAFF	APPROVED	DATE NOV 06	SCALE 1:1000 SI	BAUGHMAN NO 99 12 E575					