

STA 0+00 LINE 1 =
 STA 0+00 LINE 1A
 FAWN GROVE STA 1+15.76, 24.53' RT.
 1 - 8" 90° BEND
 1 - 8" GATE VALVE (N)
 VALVE BOX ELEV = 1351.81

STA 0+51.18 LINE 1A
 FAWN GROVE STA 1+15.12, 26.65' LT.
 CONNECT TO EXISTING 8" GATE VALVE
 1 - 90° BEND

STA 4+20.19 LINE 1
 BL STA 4+95.89, 26' RT.
 1 - 45° MJ BEND (VERT)
 2.95 L.F. 8" DI CL PIPE
 STA 4+23.14 LINE 1
 BL STA 4+97.84, 26' RT.
 1 - 45° MJ BEND (VERT)

STA 4+40.94 LINE 1
 BL STA 5+17.64, 26' RT.
 1 - 45° MJ BEND (VERT)
 2.95 L.F. 8" DI CL PIPE
 STA 4+43.89 LINE 1
 BL STA 5+19.59, 26' RT.
 1 - 45° MJ BEND (VERT)

STA 0+88.30 LINE 1
 FAWN GROVE STA 1+98.85, 26.90' LT.
 1 - 8" 22.5° BEND

STA 1+33.30 LINE 1
 FAWN GROVE STA 2+34.62, 25.99' RT.
 1 - 8" 22.5° BEND
 55.00 L.F. 8" PIPE

STA 1+88.30 LINE 1
 FAWN GROVE STA 2+78.76, 25.25' RT.
 1 - 8" 22.5° BEND
 55.00 L.F. 8" PIPE

STA 2+43.30 LINE 1
 FAWN GROVE STA 3+22.66, 27.19' RT.
 1 - 8" 22.5° BEND

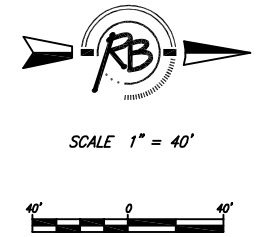
STA 2+60.07 LINE 1 =
 STA 0+00.00 LINE 2
 FAWN GROVE STA 3+36.33, 26.00' RT
 1 - 8"X4" MJ TEE
 1 - 4" GATE VALVE ASSEMBLY (E)
 VALVE BOX ELEV = 1351.49

STA 3+20.07, LINE 1
 FAWN GROVE STA 3+95.77, 26.00' RT.
 1 - FH ASSEMBLY
 BURY LINE ELEV = 1350.65
 VALVE BOX ELEV = 1350.50
 L = 5.0'

STA 5+48.07 LINE 1 =
 STA 0+00.00 LINE 3
 FAWN GROVE STA 6+23.77, 26.00' RT
 1 - 8"X8" MJ TEE
 1 - 8" GATE VALVE ASSEMBLY (E)
 VALVE BOX ELEV = 1351.25

STA 7+92.72 LINE 1
 FAWN GROVE STA 8+77.04, 19.90 RT.
 1 - 8" 45° BEND

STA 8+34.03 LINE 1
 FAWN GROVE STA 9+30.61, 25.24 RT.
 REMOVE EXISTING BLOW OFF AND CONNECT
 TO EXISTING WATER LINE

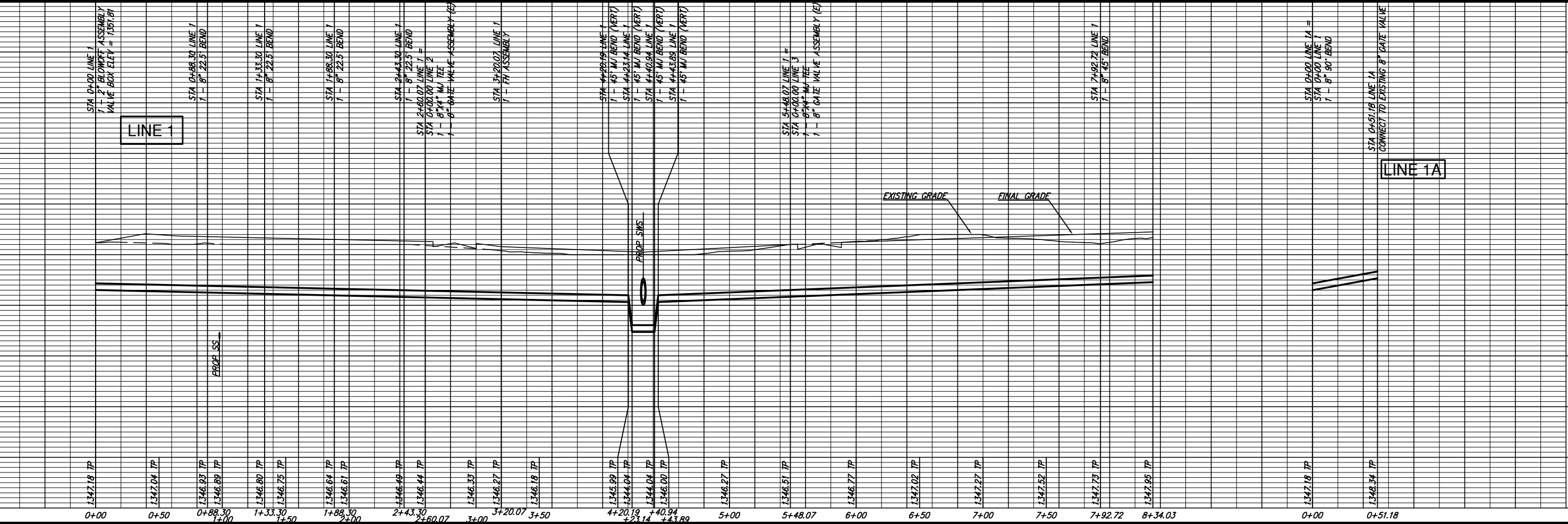


Fawn Grove Phase 4

Fawn Grove

Fawn Grove Court

Fawn Grove Court



LINE 1

LINE 1A

Ruggles & Bohm, P.A. Engineering, Surveying, Land Planning 1000 N. Main Street, Suite 100 Wichita, Kansas 67202 www.rugglesandbohm.com	
DESIGN	REVISION
EJG	RLS
UTILITY	DATE
	May 24, 2007
PROJECT NUMBER	DRAWING FILE
1355	SS 1
Fawn Grove Phase 4 Water Line 1 WICHITA, KANSAS	
3075E	3
13	