

Water Distribution System

MAPLE SHADE ADDITION PHASE 2

PROJECT NO. 448-90318

OCA # 735375

GENERAL NOTES

- Contractor will be required to provide a minimum advance notice of twenty-four (24) hours to utility companies prior to starting any excavation as follows:

Kansas One-Call	687-2470
-----------------	----------
- The Contractor must notify the following in case of an emergency:

Cox Communications	262-0661
Kansas Gas Service	383-8600
K.G.&E. Electric	383-8600
Southern Star Central Gas	640-7747
Southwestern Bell Telephone Company	1-800-286-8313
City of Wichita Water Dept.	262-6000
City of Wichita Sewer Maintenance	262-6000
- Opening and closing water valves shall be done slowly to prevent damage to the water distribution system from water hammer. All valves closed by the Contractor must be reopened as new construction permits. Project inspector must ascertain that any valve closed by the Contractor is reopened. Contractor will be permitted to operate water valves only when the project inspector assigned to the project is present.
- Rubble from the removal of miscellaneous structures and excess excavation which is to be wasted shall be disposed of on sites to be provided by the Contractor. These sites shall be approved by the Engineer as to suitability, appearance and site location. Locations that, in the opinion of the Engineer, will leave an unsightly appearance will not be approved.
- The Contractor shall be responsible for preserving property irons. The Contractor will be required to re-establish any property irons which are damaged or destroyed by his construction operations. Such irons shall be re-established by a licensed land surveyor in accordance with state laws.
- Underground utility service lines and overhead utility pole lines are to be adjusted as necessary by others prior to construction unless the plans specifically call for their adjustment by the Contractor or unless the plans specifically identify a utility to be adjusted by its owner during construction. Existing utilities and their location, as shown on the plans, represent the best information obtainable for design. Location information has been obtained from the various utility companies and is either from company record drawings or company-provided field locations. The Contractor will be required to work around existing utilities within the right-of-way which do not conflict with proposed construction.
- The Contractor shall give all property owners and/or tenants of developed property directly abutting the construction of this project a minimum of ten (10) days advance notice prior to start of construction.

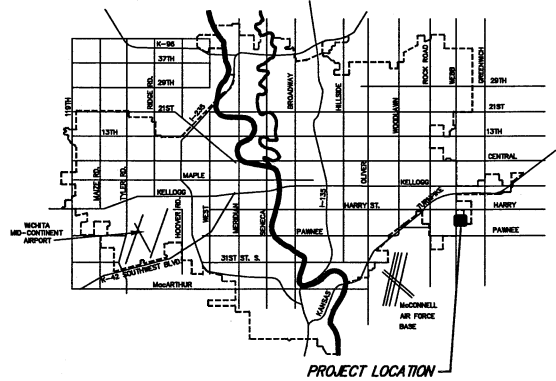
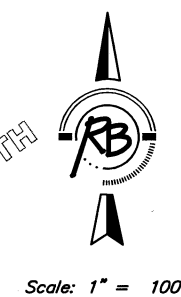
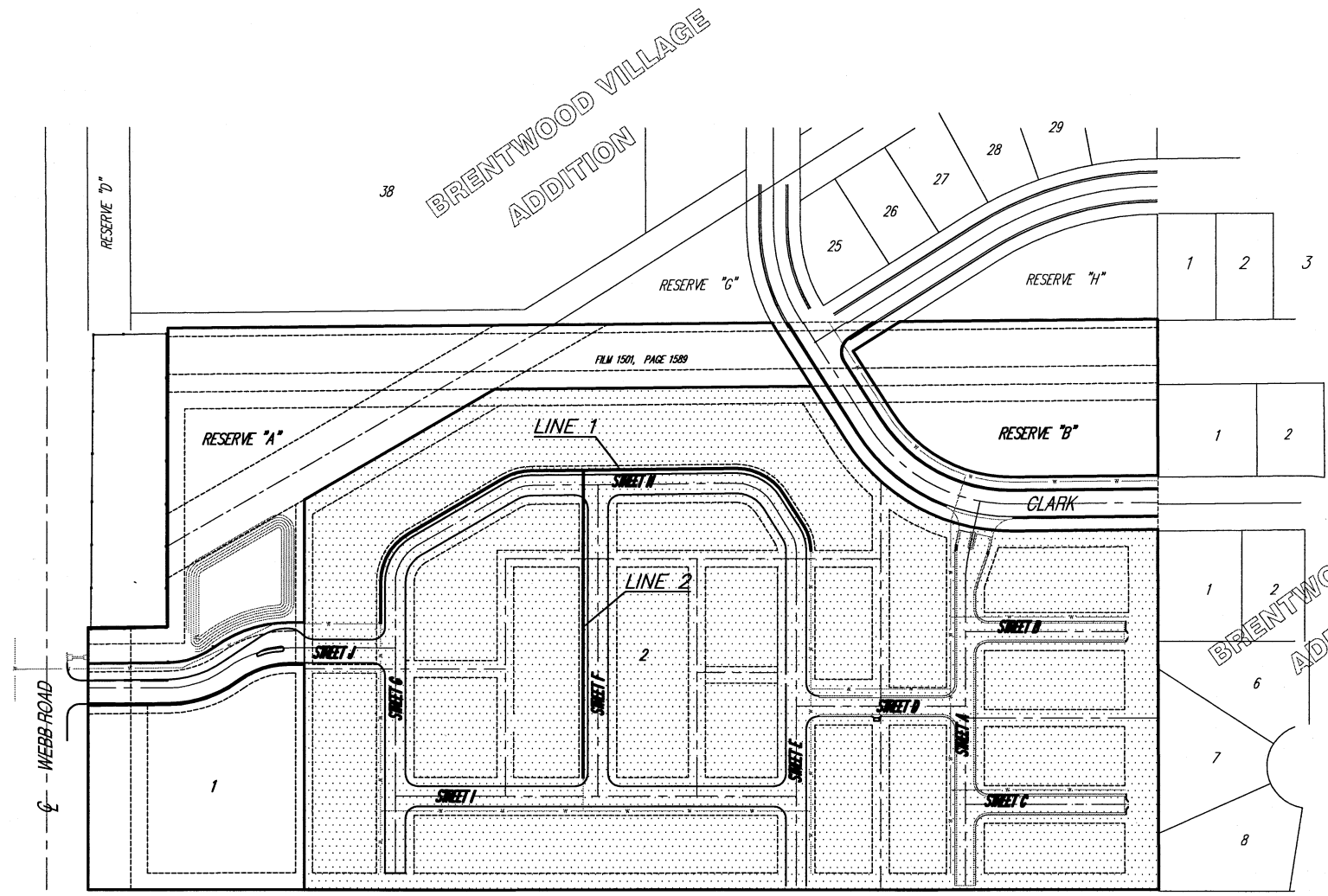
BENCH MARKS

BENCH MARK #1: USGS BRASS PLUG 28' S. & 530' W. OF CENTERLINE INTERSECTION OF CAPRI & PANNEE ELEV.=1386.25 NGVD

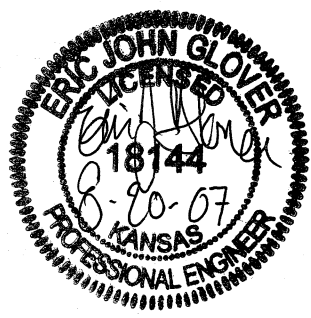
BENCH MARK #2: CITY OF WICHITA STD. DISC 20.8' W & 54.5' S. OF CENTERLINE INTERSECTION DALTON & PANNEE ELEV.=1379.60

INDEX OF SHEETS

- Title Sheet
- Water Connection Details
- Water Main Profiles
- Bubble Map
- Erosion Control Plan
- 10. Erosion Control BMP'S
- Final Plat



VICINITY MAP



CITY OF WICHITA, KANSAS
 JAMES ARMOUR, P.E. - CITY ENGINEER



Ruggles & Bohm, P.A.
 Engineering, Surveying, Land Planning
 924 North Main (316) 264-8008
 Wichita, Kansas 67203 (316) 264-4621 fax
 www.rbkansas.com E-mail: info@rbkansas.com