

# CONSTRUCTION PLANS FOR SANITARY SEWER EXTENSION

TO SERVE

## CYPRESS GLEN ADDITION

CITY OF WICHITA ENGINEERING PROJECT NO. 468-2023-016039  
ORG CODE: 47269623, MUNIS NO.: E3123

AND

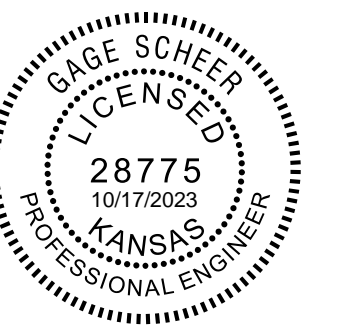
## PIKE 3RD ADDITION

CITY OF WICHITA ENGINEERING PROJECT NO. 468-2023-016038  
ORG CODE: 47269723, MUNIS NO.: E3124

## CITY OF WICHITA, KS

PAUL GUNZELMAN, P.E. - CITY ENGINEER

Apex Construction - Contractor  
S. Lowe - City of Wichita, Field Project Engineer  
M. Thom - City of Wichita, Inspector  
As-Built  
Risers  
Release Date (for connection purposes only): 7/18/2024  
pdf: apr 5/15/2025

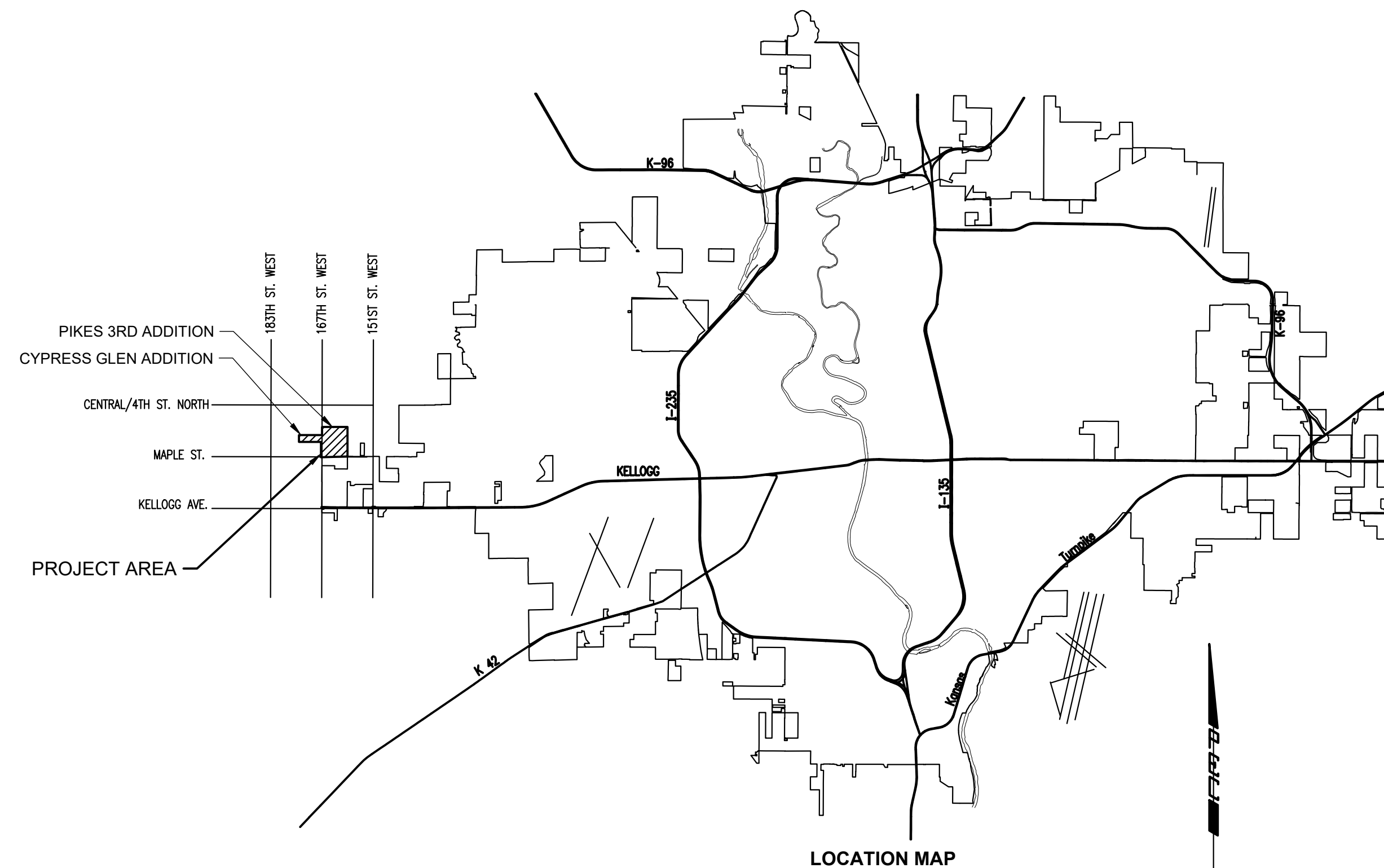


SANITARY SEWER EXTENSION  
TO SERVE  
CYPRESS GLEN  
AND  
PIKES 3RD ADDITION  
PAUL GUNZELMAN, P.E. - CITY ENGINEER  
CITY OF WICHITA PROJECT NO. 468-2023-016039  
CITY OF WICHITA PROJECT NO. 448-2023-016042

DEVELOPER CONTACT  
MIKE MEYSING  
MEYSING PROPERTIES, LLC  
35601 EAST 157TH CT  
HUDSON, CO 80642  
502-693-0921

AND

JAY W. RUSSELL  
PO BOX 75337  
WICHITA, KS 67205  
316-295-8028



### INDEX OF SHEETS

SHEET NUMBER	SHEET TITLE
C-001	SANITARY SEWER OFFSITE TITLE SHEET
C-002	GENERAL NOTES
CU-100	OFFSITE SANITARY SEWER BUBBLE MAP
CU-101	SANITARY SEWER LINE NO. 5
CU-102	SANITARY SEWER LINE NO. 5
CU-103	SANITARY SEWER LINE NO. 5
CU-104	SANITARY SEWER LINE NO. 5
CU-105	SANITARY SEWER LINE NO. 5
CU-106	SANITARY SEWER LINE NO. 5
CU-501	PRECAST SANITARY SEWER MANHOLE
CU-502	MANHOLE FRAME AND COVER (SANITARY SEWER)
CU-503	VERTICAL RISER ASSEMBLY SEWER DETAIL
CU-504	EROSION CONTROL PLAN
CU-505	SOIL EROSION BMP DETAILS
CU-506	SOIL EROSION BMP DETAILS
CU-507	SOIL EROSION BMP DETAILS
CU-508	SOIL EROSION BMP DETAILS
CU-509	SOIL EROSION BMP DETAILS
CU-510	COPY OF PLAT -PIKES 3RD ADDITION

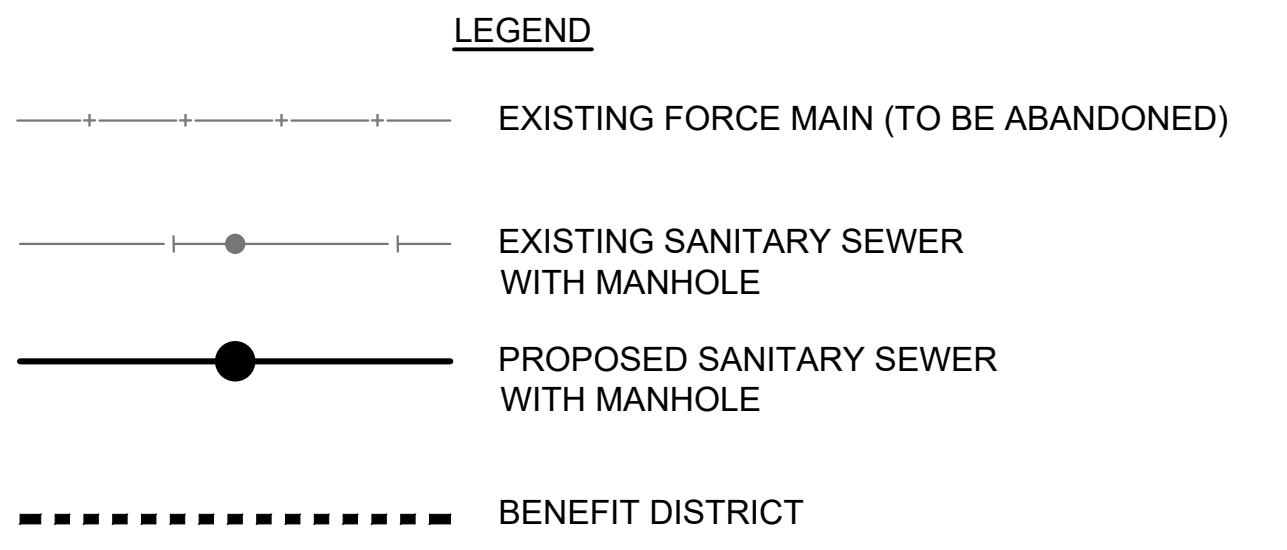
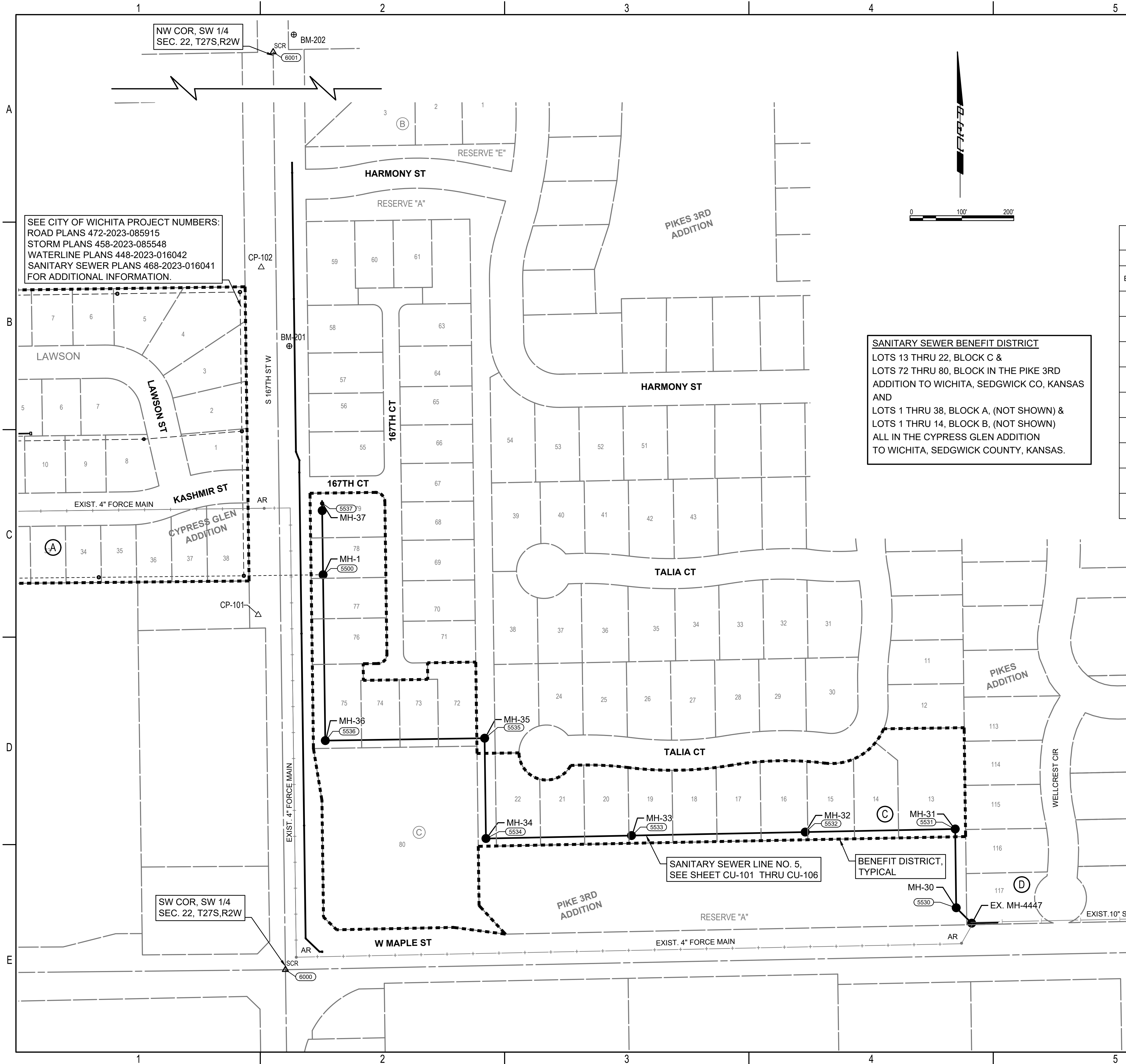
JOB NO.	210975-005
DATE	SEPTEMBER 2023
PM	AMD
DESIGNED BY	SNW
DRAWN BY	AJH
CHECKED BY	GAS

SANITARY SEWER OFFSITE  
TITLE SHEET

C-001  
1 OF 19

SAVED 10/11/2023 10:40:52 AM BY KURTIS.DEKAT  
PLOTTED 10/12/2023 9:54:34 AM BY KURTIS.DEKAT  
U:\WICHITA-CIVIL\2021\210975\005\PEC\DRAWINGS\210975-005-C-001.DWG

SAVED 10/11/2023 10:59:48 AM BY KURTIS.DEKAT  
 PLOTTED 10/12/2023 9:54:53 AM BY KURTIS.DEKAT  
 U:\WICHITA-CIVIL\2021\210975\005\PEC\DRAWINGS\210975-005-CU-100.DWG



**STRUCTURE TABLE  
SANITARY SEWER LINE NO. 5**

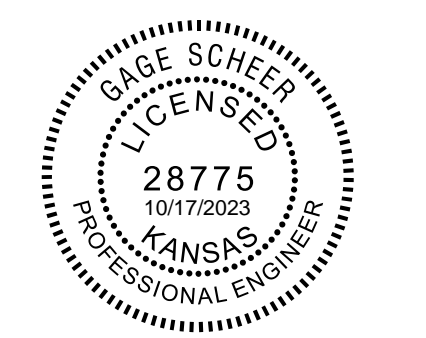
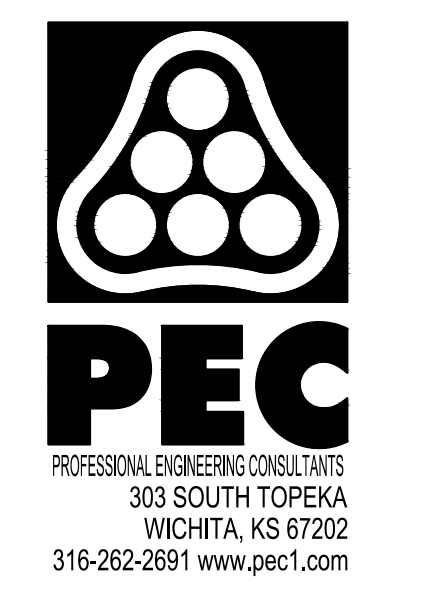
NAME	ID	STATION	COORDINATES	DESCRIPTION
EX. MH-4447		80+00.0 SANITARY SEWER LINE NO. 5	N: 1,682,522.8275 E: 1,593,140.6392	4' DIAMETER MANHOLE
MH-1	5500	99+18.5 SANITARY SEWER LINE NO. 5	N: 1,683,194.5460 E: 1,591,890.7605	5' DIAMETER MANHOLE
MH-30	5530	80+42.1 SANITARY SEWER LINE NO. 5	N: 1,682,552.6100 E: 1,593,110.8567	5' DIAMETER MANHOLE
MH-31	5531	81+93.9 SANITARY SEWER LINE NO. 5	N: 1,682,704.4274 E: 1,593,108.9317	5' DIAMETER MANHOLE
MH-32	5532	84+83.1 SANITARY SEWER LINE NO. 5	N: 1,682,698.5619 E: 1,592,819.7908	5' DIAMETER MANHOLE
MH-33	5533	88+17.8 SANITARY SEWER LINE NO. 5	N: 1,682,691.7740 E: 1,592,485.1812	5' DIAMETER MANHOLE
MH-34	5534	90+98.4 SANITARY SEWER LINE NO. 5	N: 1,682,686.0840 E: 1,592,204.6910	5' DIAMETER MANHOLE
MH-35	5535	92+91.8 SANITARY SEWER LINE NO. 5	N: 1,682,879.4613 E: 1,592,202.0798	5' DIAMETER MANHOLE
MH-36	5536	95+98.8 SANITARY SEWER LINE NO. 5	N: 1,682,874.8407 E: 1,591,895.0775	5' DIAMETER MANHOLE
MH-37	5537	100+55.9 SANITARY SEWER LINE NO. 5	N: 1,683,331.9343 E: 1,591,888.9053	5' DIAMETER MANHOLE

**SANITARY SEWER BENEFIT DISTRICT**  
 LOTS 13 THRU 22, BLOCK C &  
 LOTS 72 THRU 80, BLOCK IN THE PIKE 3RD  
 ADDITION TO WICHITA, SEDGWICK CO, KANSAS  
 AND  
 LOTS 1 THRU 38, BLOCK A, (NOT SHOWN) &  
 LOTS 1 THRU 14, BLOCK B, (NOT SHOWN)  
 ALL IN THE CYPRESS GLEN ADDITION  
 TO WICHITA, SEDGWICK COUNTY, KANSAS.

**CONTROL SUMMARY**  
 HORIZONTAL DATUM/COORDINATE SYSTEM: NAD 83 (2011) KANSAS SOUTH ZONE PROJECT  
 COORDINATE SYSTEM: (GRID) ON DESCRIBED COORDINATE SYSTEM VERTICAL DATUM: NAVD 88  
 SCALE POINT: NORTHING: 0  
 EASTING: 0  
 COMBINED ADJUSTMENT FACTOR (CAF): GROUND TO GRID=0.99988034  
 GRID TO GROUND=1/0.99988034  
 DISTANCE UNITS: US SURVEY FEET

- HORIZONTAL CONTROL POINTS**
- CP-100 (NOT SHOWN)  
 N: 1,683,328.6253 E: 1,590,916.2335  
 SET 1/2" REBAR WITH BLUE PEC CP CAP AT SURFACE
  - 1. 43.37' SE TO CENTERLINE TOP SANITARY SEWER MANHOLE
  - 2. 46.54' ESE TO SW COR CONCRETE PAD
  - 3. 44.54' SSE TO CENTERLINE TOP SANITARY SEWER MANHOLE
- BENCH MARKS**
- BM-200 (NOT SHOWN)  
 ELEV: 1,429.28 (NAVD 88)  
 CHISELED SQUARE CUT IN NE CORNER OF CONCRETE LIFT STATION PAD APPROXIMATELY 839 FEET W OF THE CENTERLINE OF 167TH ST AND 882 FEET NORTH OF MAPLE STREET
  - BM-201  
 ELEV: 1,431.85 (NAVD 88)  
 SET "T" SHAPED FENCE POST FLUSH WITH GROUND 1.5 FEET WEST OF WOODEN POWER POLE APPROX 1202 FEET NORTH OF THE INTERSECTION OF 167TH STREET AND MAPLE STREET ON THE EAST SIDE OF ROAD
  - BM-202  
 ELEV: 1,424.24 (NAVD 88)  
 SET "T" SHAPED FENCE POST FLUSH WITH GROUND 1.5 FEET WEST OF A WOODEN CORNER FENCE POST APPROXIMATELY 33 FEET NORTH OF A HEDGE ROW TO WEST AND 2667 FEET NORTH OF THE INTERSECTION OF MAPLE STREET AND 167TH STREET ON WEST SIDE OF 167TH STREET

- CP-101**  
 N: 1,683,117.2541 E: 1,591,765.8789  
 SET 1/2" REBAR WITH BLUE PEC CP CAP AT SURFACE
- 1. 43.75' E TO CENTERLINE OF 167TH STREET
  - 2. 17' ESE TO 60D NAIL IN N FACE OF POWER POLE
  - 3. 14.2' NNE TO S FACE OF THE WEST STEEL SIGN POST AT BASE
- CP-102**  
 N: 1,683,787.3569 E: 1,591,771.7391
- 1. 6.55' NE TO S END OF A 18" CMP
  - 2. 11.4' SE TO W FACE OF 55 MPH STEEL SIGN POST AT BASE
  - 3. 19' N TO THE CENTERLINE OF FIELD ENTRANCE TO W



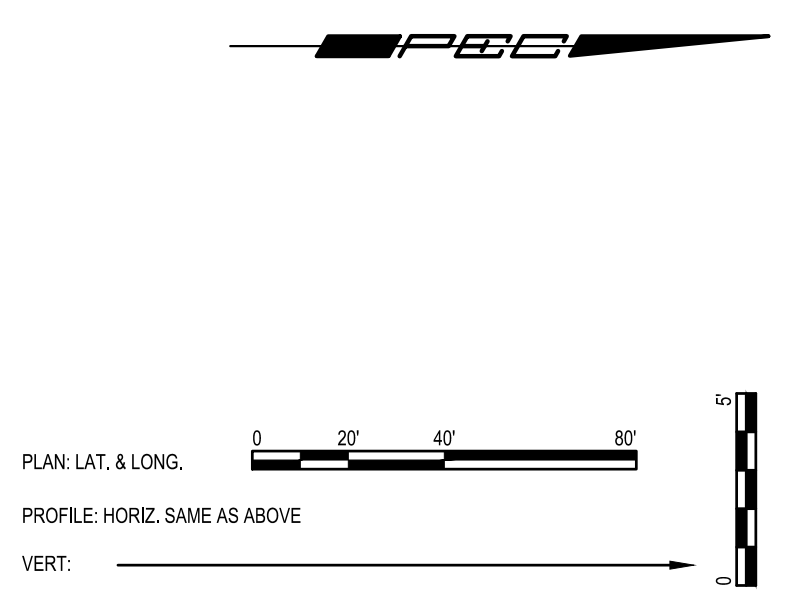
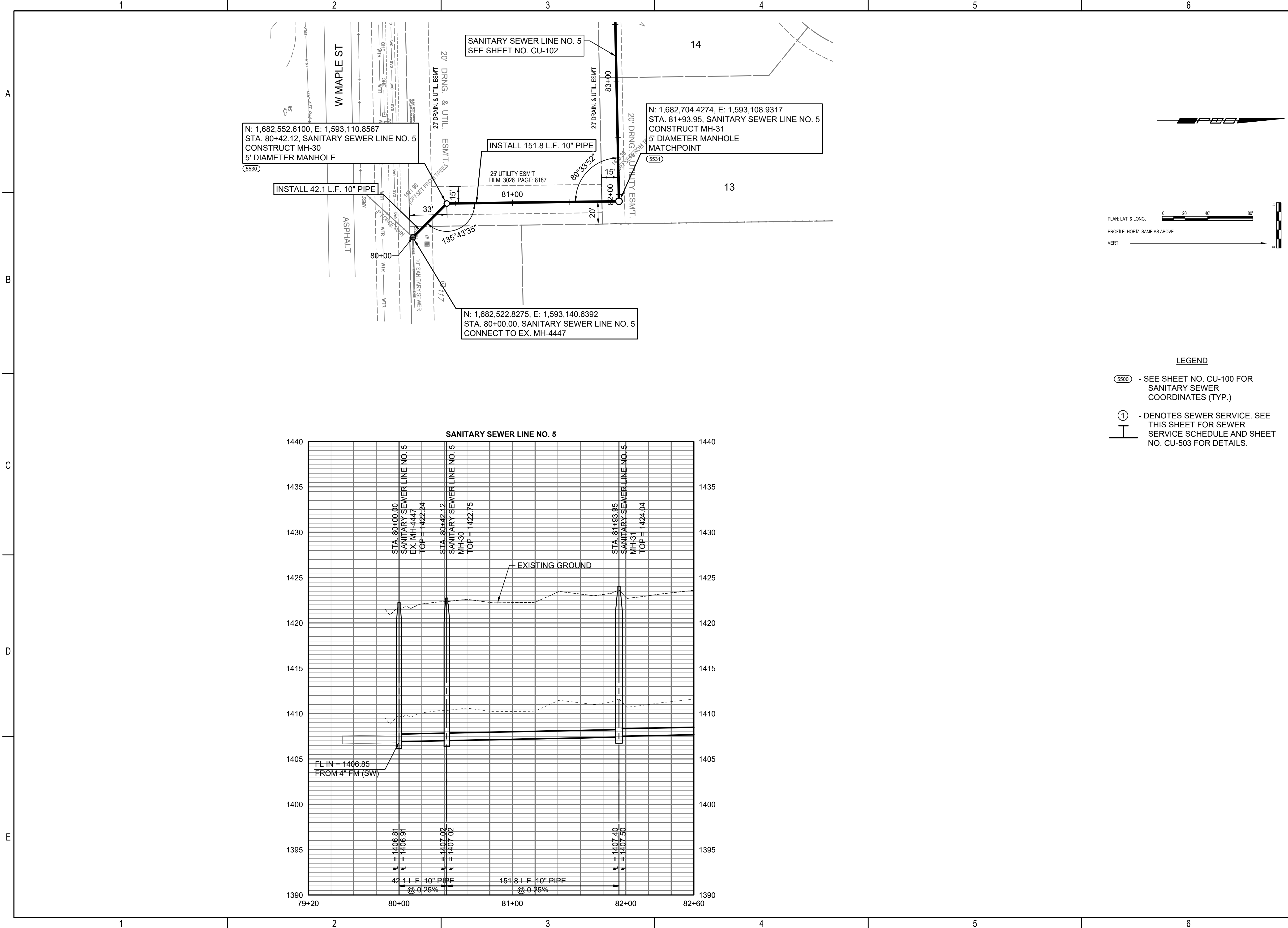
**SANITARY SEWER EXTENSION  
TO SERVE  
CYPRESS GLEN  
AND  
PIKES 3RD ADDITION**

PAUL GUNZELMAN, P.E. - CITY ENGINEER  
 CITY OF WICHITA PROJECT NO. 448-2023-016039  
 CITY OF WICHITA PROJECT NO. 448-2023-016042

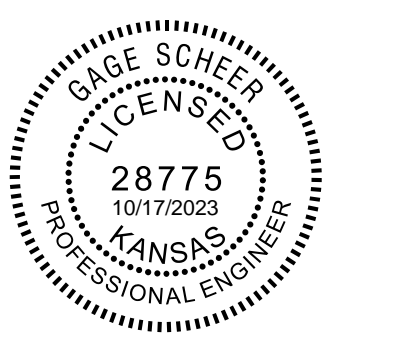
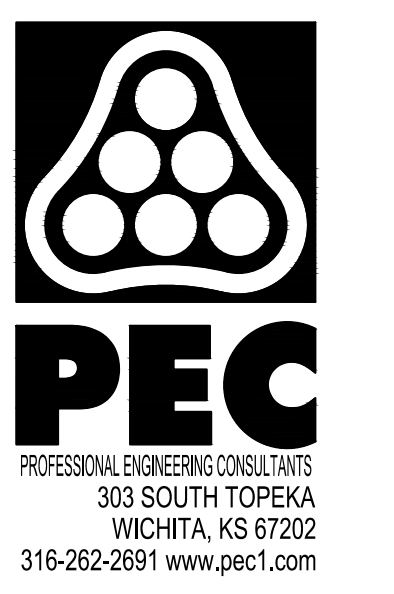
JOB NO.	210975-005
DATE	SEPTEMBER 2023
PM	AMD
DESIGNED BY	SNW
DRAWN BY	AJH
CHECKED BY	GAS

OFFSITE SANITARY SEWER  
BUBBLE MAP

SAVED 10/11/2023 11:04:48 AM BY KURTIS.DEKAT  
 PLOTTED 10/12/2023 9:55:07 AM BY KURTIS.DEKAT  
 U:\WICHITA-CIVIL\2021\210975005\PEC\DRAWINGS\210975-005-CU-101.DWG



- LEGEND**
- 5500 - SEE SHEET NO. CU-100 FOR SANITARY SEWER COORDINATES (TYP.)
  - 1 - DENOTES SEWER SERVICE. SEE THIS SHEET FOR SEWER SERVICE SCHEDULE AND SHEET NO. CU-503 FOR DETAILS.

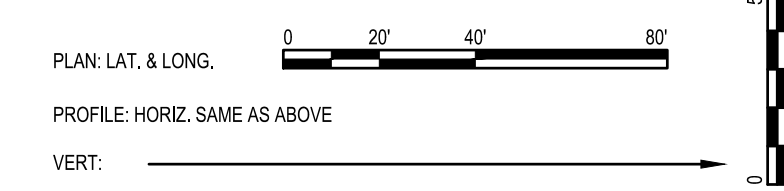
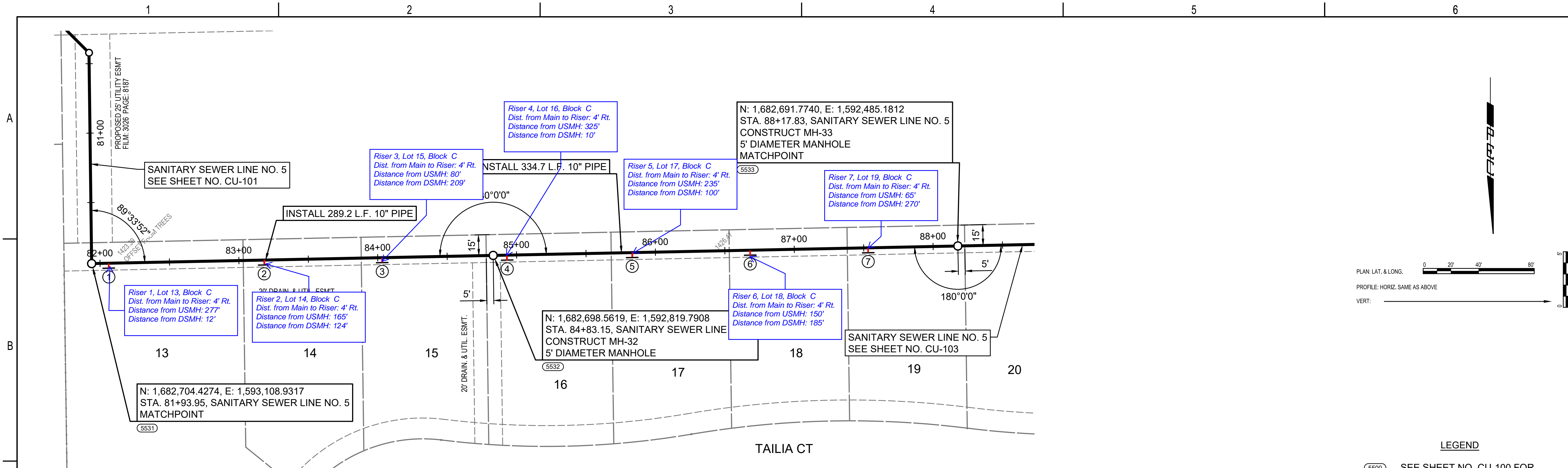


**SANITARY SEWER EXTENSION**  
 TO SERVE  
**CYPRESS GLEN**  
 AND  
**PIKES 3RD ADDITION**  
 PAUL GUNZELMAN, P.E. - CITY ENGINEER  
 CITY OF WICHITA PROJECT NO. 448-2023-016039  
 CITY OF WICHITA PROJECT NO. 448-2023-016042

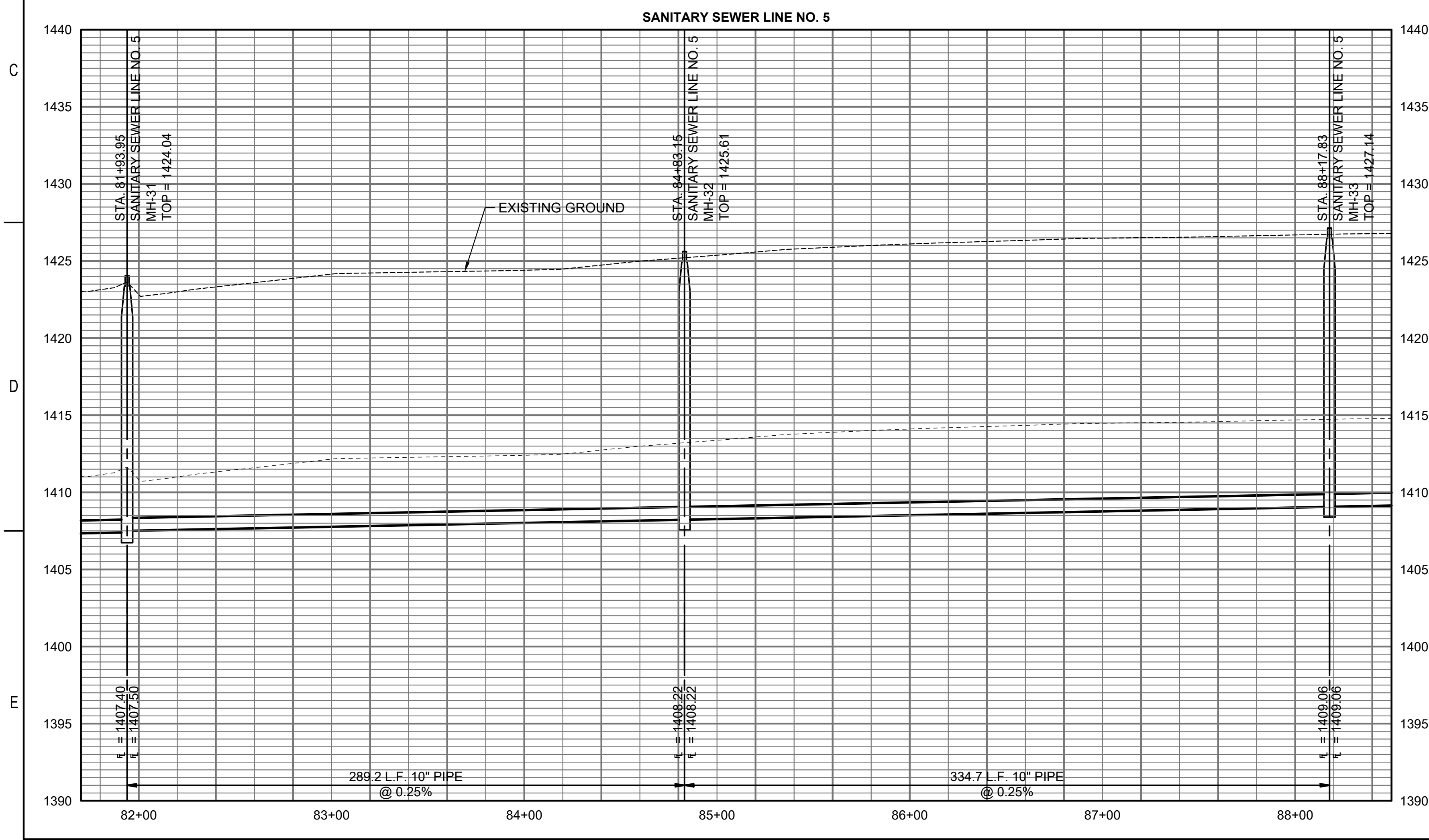
JOB NO.	210975-005
DATE	SEPTEMBER 2023
PM	AMD
DESIGNED BY	SNW
DRAWN BY	AJH
CHECKED BY	GAS

SANITARY SEWER LINE NO. 5

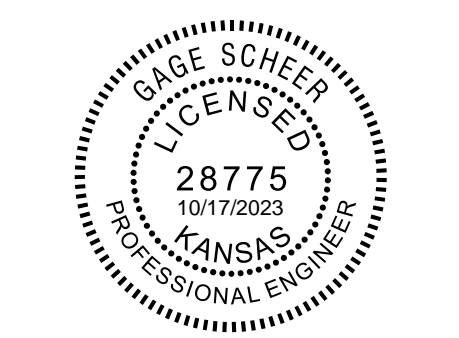
SAVED 10/11/2023 11:05:26 AM BY KURTIS.DEKAT  
 PLOTTED 10/12/2023 9:55:22 AM BY KURTIS.DEKAT  
 U:\WICHITA-CIVIL\2021\210975005\PECDRAWINGS\210975-005-CU-102.DWG



- LEGEND**
- ⑤ - SEE SHEET NO. CU-100 FOR SANITARY SEWER COORDINATES (TYP.)
  - ① - DENOTES SEWER SERVICE. SEE THIS SHEET FOR SEWER SERVICE SCHEDULE AND SHEET NO. CU-503 FOR DETAILS.



SANITARY SEWER RISER TABLE								
NUMBER	TYPE	LOT NO.	BLOCK NO.	LINE NO.	STATION	DIRECTION	APPROXIMATE VERTICAL (FT)	APPROXIMATE HORIZONTAL (FT)
1	4" TEE	13	C	5	82+06	RT	11	4
2	4" TEE	14	C	5	83+18	RT	12	4
3	4" TEE	15	C	5	84+03	RT	12	4
4	4" TEE	16	C	5	84+93	RT	13	4
5	4" TEE	17	C	5	85+83	RT	14	4
6	4" TEE	18	C	5	86+68	RT	14	4
7	4" TEE	19	C	5	87+53	RT	14	4

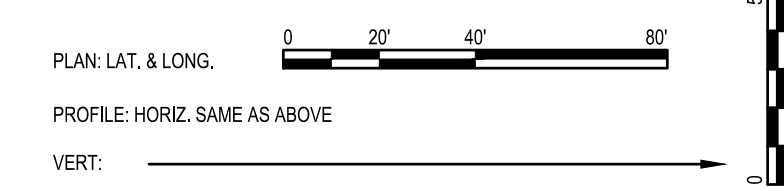
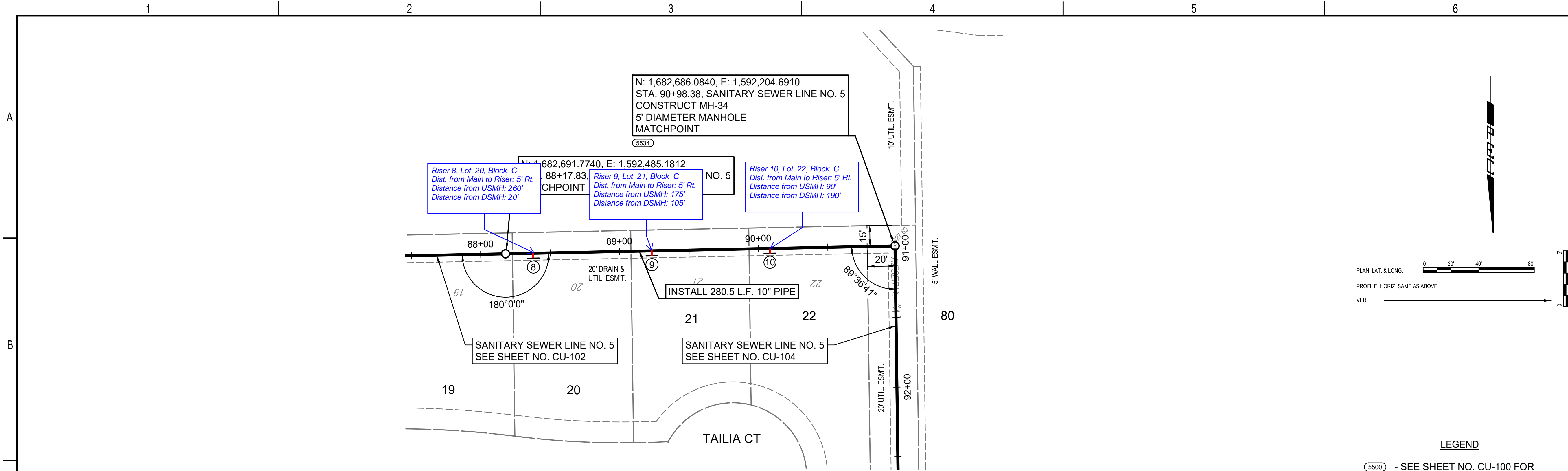


**SANITARY SEWER EXTENSION**  
 TO SERVE  
**CYPRESS GLEN**  
 AND  
**PIKES 3RD ADDITION**  
 PAUL GUNZELMAN, P.E. - CITY ENGINEER  
 CITY OF WICHITA PROJECT NO. 448-2023-016039  
 CITY OF WICHITA PROJECT NO. 448-2023-016042

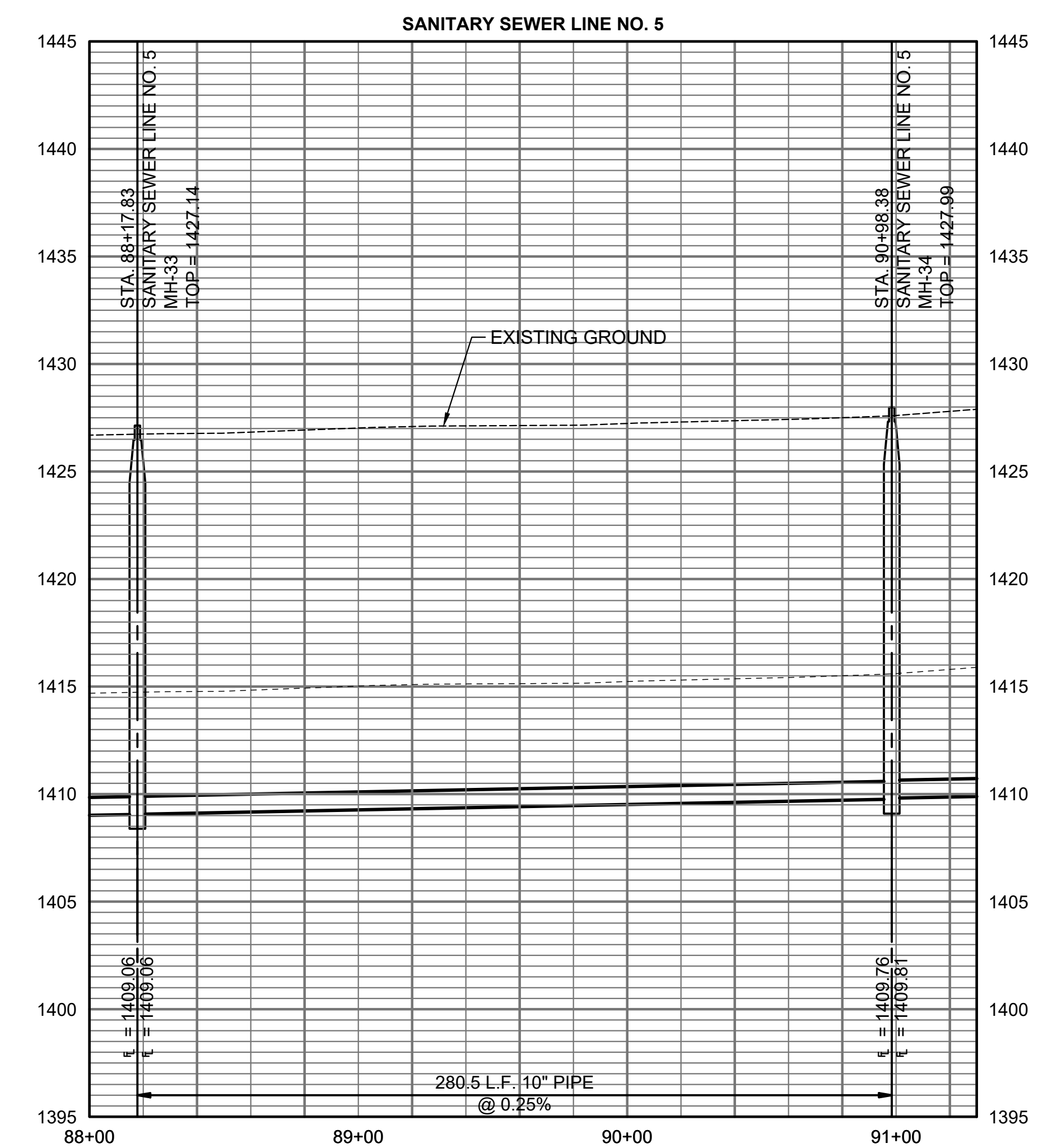
JOB NO.	210975-005
DATE	SEPTEMBER 2023
PM	AMD
DESIGNED BY	SNW
DRAWN BY	AJH
CHECKED BY	GAS

SANITARY SEWER LINE NO. 5

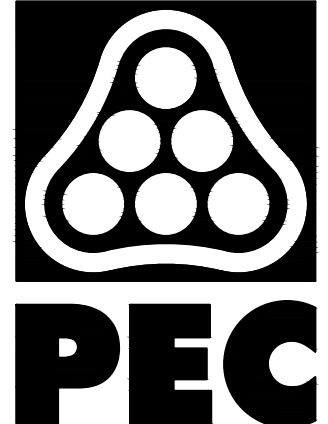
SAVED 10/6/2023 3:43:39 PM BY KURTIS DEKAT  
 PLOTTED 10/12/2023 9:55:37 AM BY KURTIS DEKAT  
 U:\WICHITA-CIVIL\2021\10975005\PEC\DRAWINGS\210975-005-CU-103.DWG





- LEGEND**
- (S500) - SEE SHEET NO. CU-100 FOR SANITARY SEWER COORDINATES (TYP.)
  - ① - DENOTES SEWER SERVICE. SEE THIS SHEET FOR SEWER SERVICE SCHEDULE AND SHEET NO. CU-503 FOR DETAILS.



SANITARY SEWER RISER TABLE								
NUMBER	TYPE	LOT NO.	BLOCK NO.	LINE NO.	STATION	DIRECTION	APPROXIMATE VERTICAL (FT)	APPROXIMATE HORIZONTAL (FT)
8	4" TEE	20	C	5	88+38	RT	14	5
9	4" TEE	21	C	5	89+23	RT	13	5
10	4" TEE	22	C	5	90+08	RT	14	5



PROFESSIONAL ENGINEERING CONSULTANTS  
 303 SOUTH TOPEKA  
 WICHITA, KS 67202  
 316-262-2691 www.pec1.com

**SANITARY SEWER EXTENSION  
 TO SERVE  
 CYPRESS GLEN  
 AND  
 PIKES 3RD ADDITION**

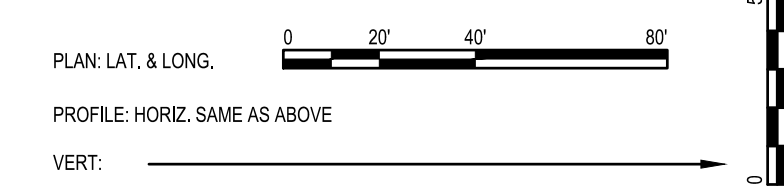
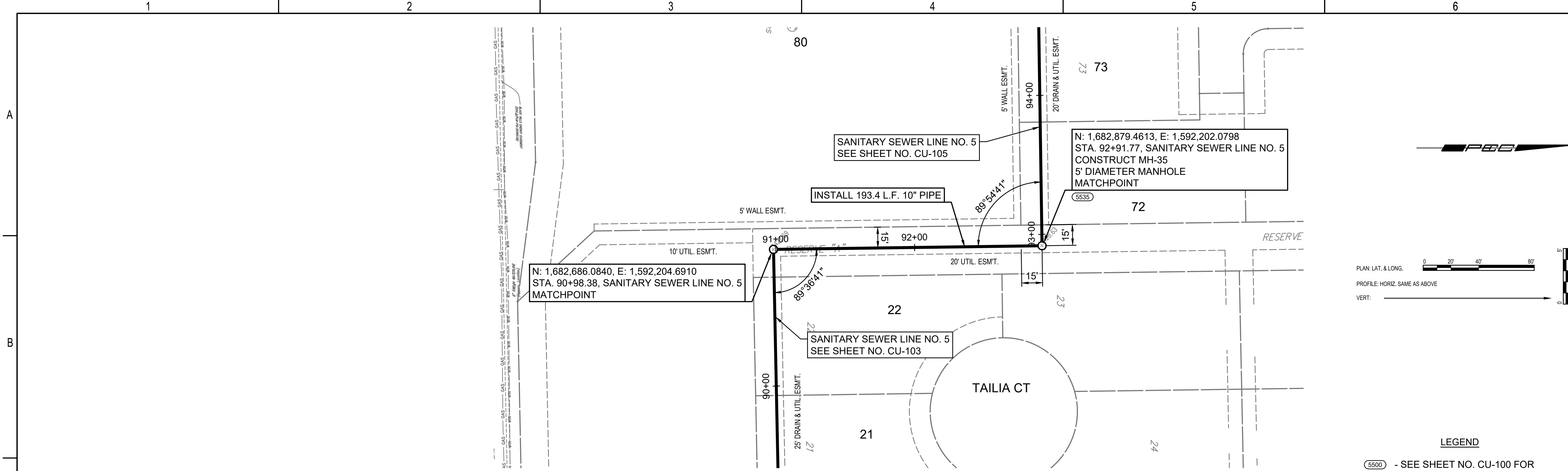
PAUL GUNZELMAN, P.E. - CITY ENGINEER  
 CITY OF WICHITA PROJECT NO. 468-2023-016039  
 CITY OF WICHITA PROJECT NO. 448-2023-016042

JOB NO.	210975-005
DATE	SEPTEMBER 2023
PM	AMD
DESIGNED BY	SNW
DRAWN BY	AJH
CHECKED BY	GAS

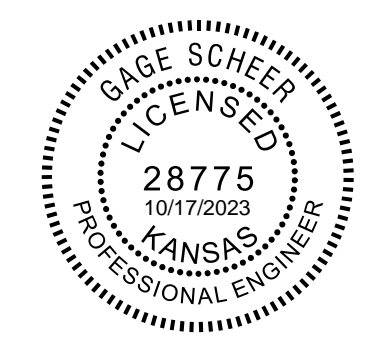
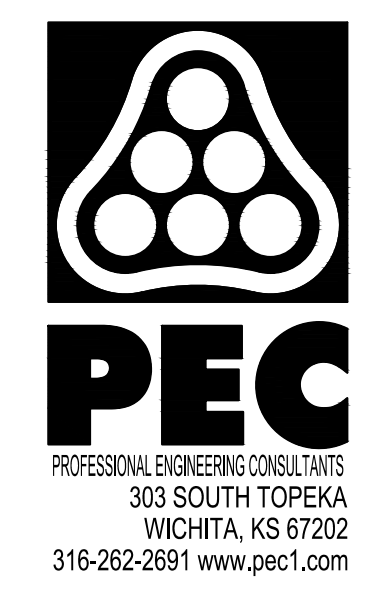
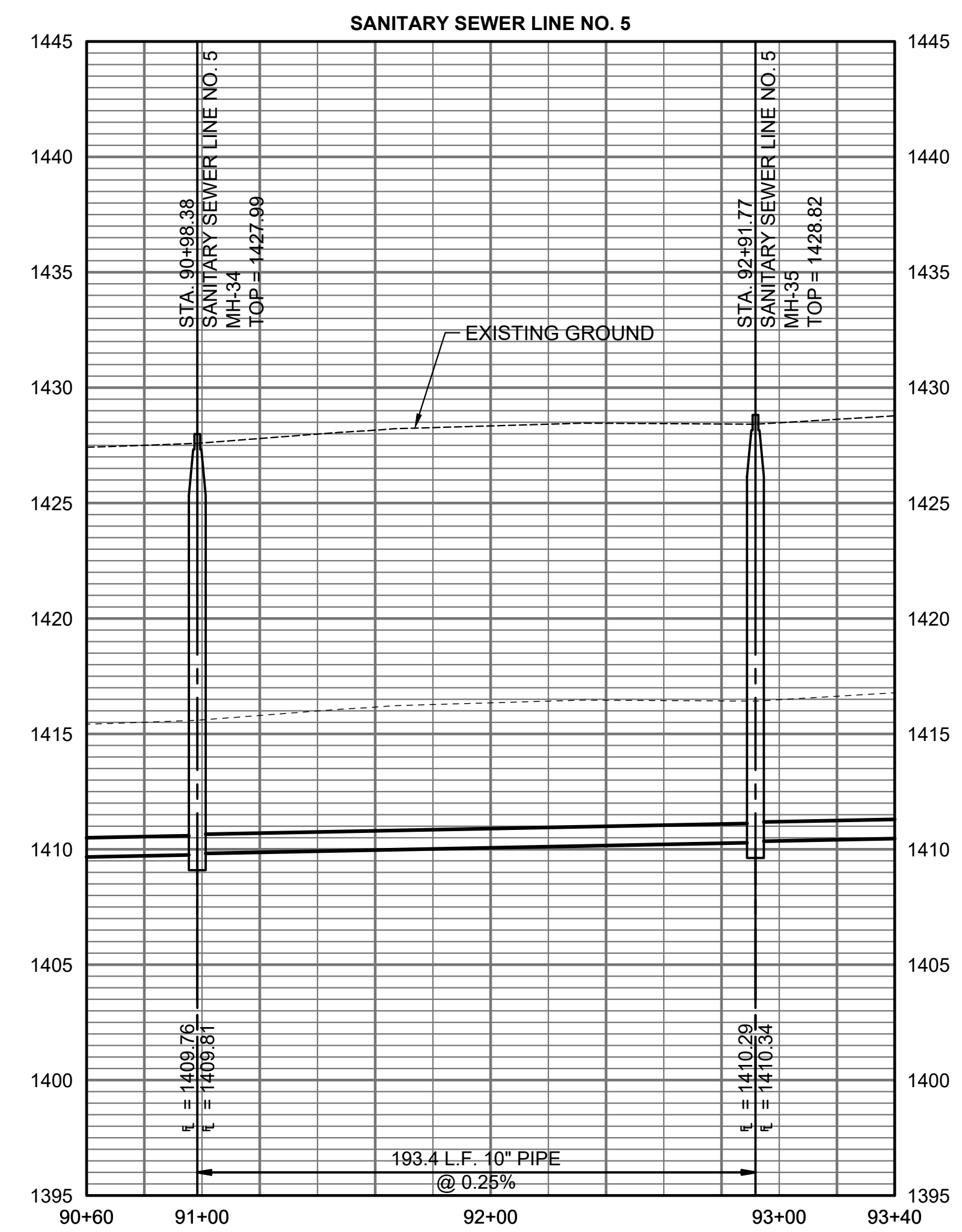
SANITARY SEWER LINE NO. 5

**CU-103**  
 6 OF 19

SAVED 10/11/2023 11:08:21 AM BY KURTIS.DEKAT  
 PLOTTED 10/12/2023 9:55:52 AM BY KURTIS.DEKAT  
 U:\WICHITA-CIVIL\2021\10975005\PEC\DRAWINGS\210975-005-CU-104.DWG



- LEGEND**
- (S500) - SEE SHEET NO. CU-100 FOR SANITARY SEWER COORDINATES (TYP.)
  - ① - DENOTES SEWER SERVICE. SEE THIS SHEET FOR SEWER SERVICE SCHEDULE AND SHEET NO. CU-503 FOR DETAILS.

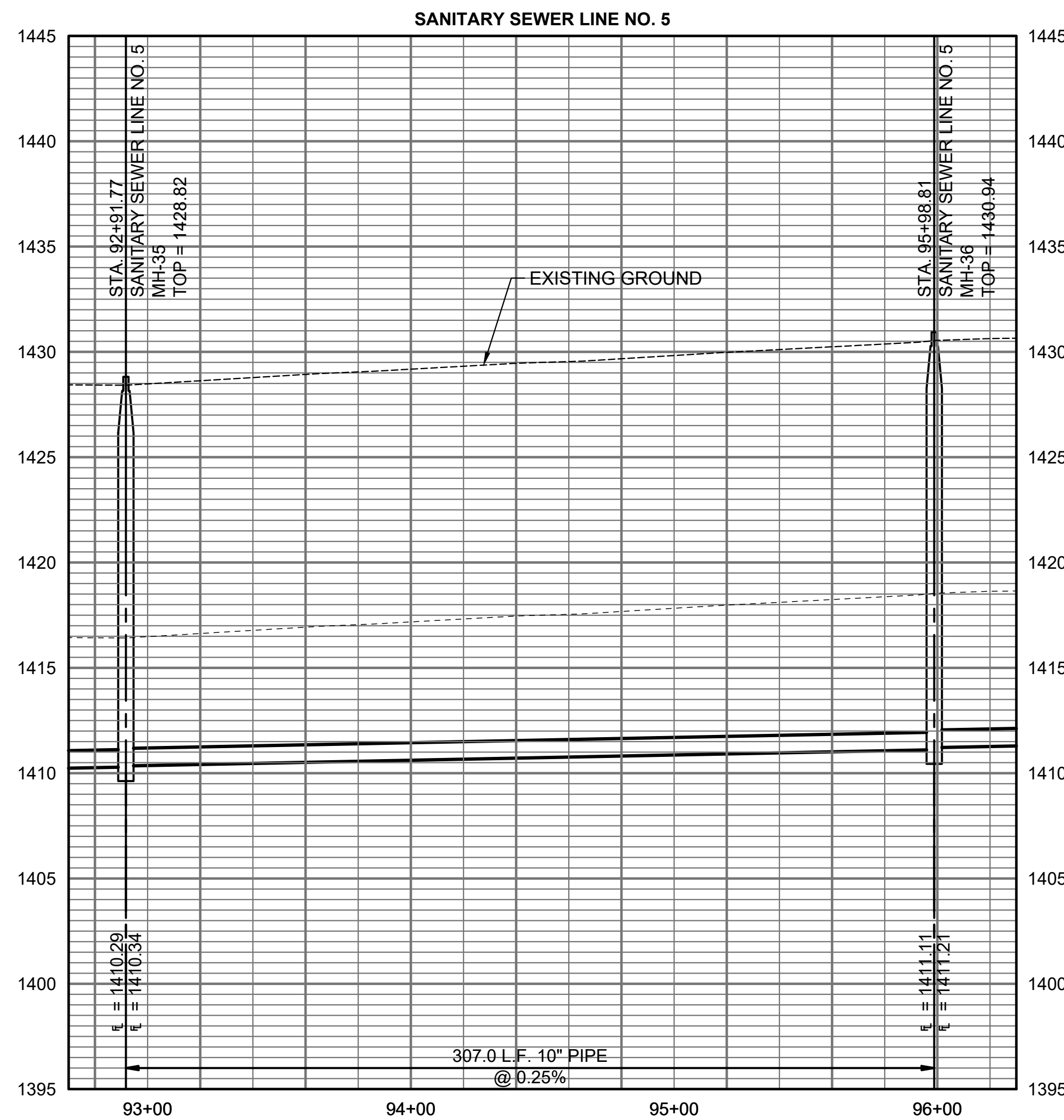
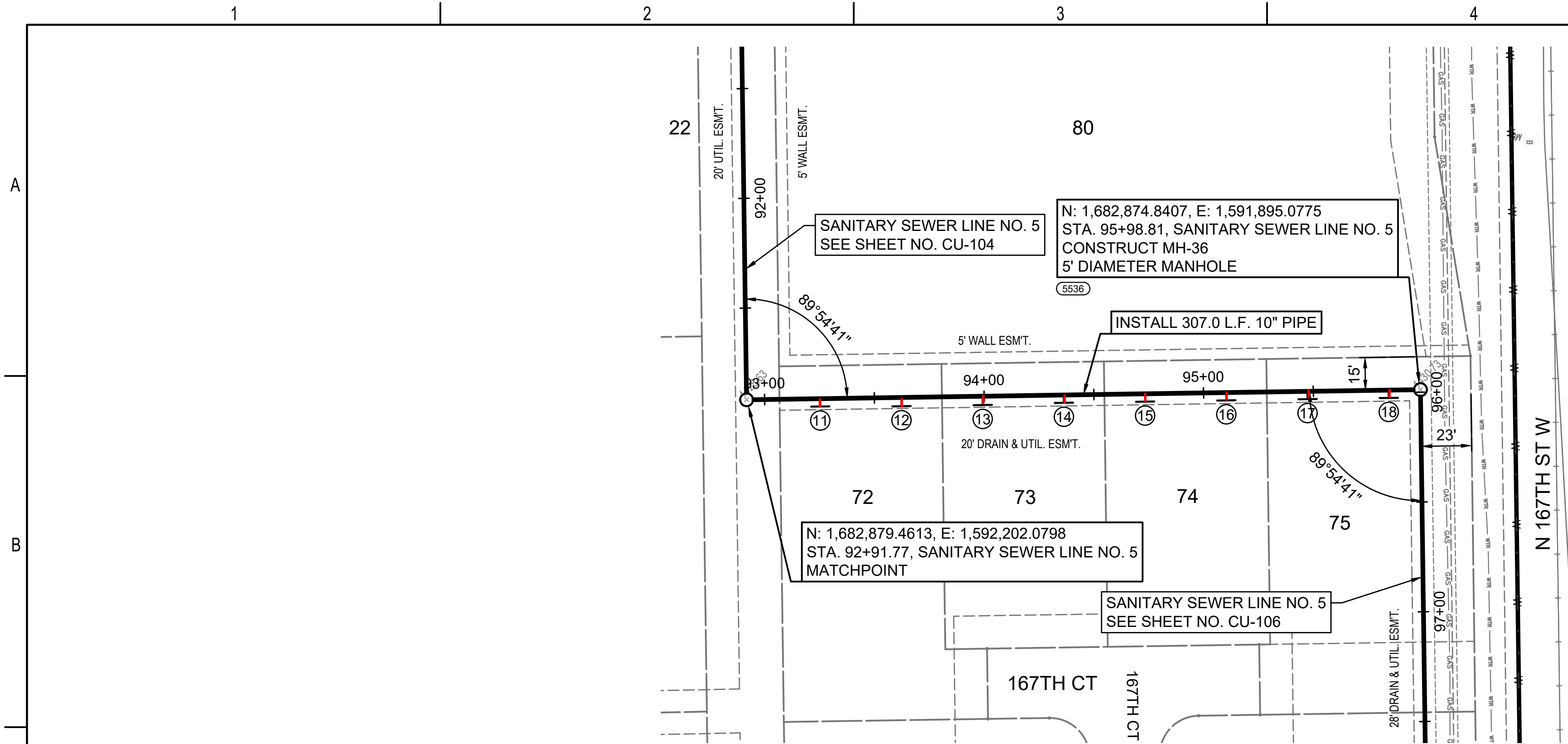


**SANITARY SEWER EXTENSION**  
 TO SERVE  
**CYPRESS GLEN**  
 AND  
**PIKES 3RD ADDITION**  
 PAUL GUNZELMAN, P.E. - CITY ENGINEER  
 CITY OF WICHITA PROJECT NO. 468-2023-016039  
 CITY OF WICHITA PROJECT NO. 448-2023-016042

JOB NO.	210975-005
DATE	SEPTEMBER 2023
PM	AMD
DESIGNED BY	SNW
DRAWN BY	AJH
CHECKED BY	GAS

SANITARY SEWER LINE NO. 5

SAVED 10/11/2023 11:10:03 AM BY KURTIS.DEKAT  
 PLOTTED 10/12/2023 9:56:10 AM BY KURTIS.DEKAT  
 U:\WICHITA-CIVIL\2021\10975005\PECDRAWINGS\210975-005-CU-105.DWG




RISER NO.	DISTANCE FROM MAIN TO RISER	DISTANCE FROM	
		UPSTREAM MH	DOWNSTREAM MH
11	4' Rt.	274'	33'
12	4' Rt.	237'	70'
13	4' Rt.	200'	107'
14	4' Rt.	163'	144'
15	4' Rt.	126'	181'
16	4' Rt.	89'	218'
17	4' Rt.	52'	255'
18	4' Rt.	15'	292'


SANITARY SEWER RISER TABLE								
NUMBER	TYPE	LOT NO.	BLOCK NO.	LINE NO.	STATION	DIRECTION	APPROXIMATE VERTICAL (FT)	APPROXIMATE HORIZONTAL (FT)
11	4" TEE	72	C	5	93+25	RT	14	4
12	4" TEE	72	C	5	93+62	RT	14	4
13	4" TEE	73	C	5	93+99	RT	15	4
14	4" TEE	73	C	5	94+36	RT	15	4
15	4" TEE	74	C	5	94+73	RT	15	4
16	4" TEE	74	C	5	95+10	RT	15	4
17	4" TEE	75	C	5	95+47	RT	15	4
18	4" TEE	75	C	5	95+84	RT	15	4



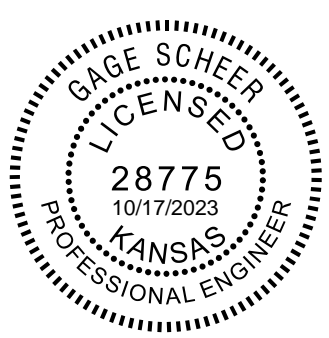
- LEGEND**
- (5500) - SEE SHEET NO. CU-100 FOR SANITARY SEWER COORDINATES (TYP.)
  - (1) - DENOTES SEWER SERVICE. SEE THIS SHEET FOR SEWER SERVICE SCHEDULE AND SHEET NO. CU-503 FOR DETAILS.



PROFESSIONAL ENGINEERING CONSULTANTS  
 303 SOUTH TOPEKA  
 WICHITA, KS 67202  
 316-262-2691 www.pec1.com



CITY OF WICHITA



GAGE SCHEER  
 LICENSED  
 28775  
 10/17/2023  
 KANSAS  
 PROFESSIONAL ENGINEER

**SANITARY SEWER EXTENSION  
 TO SERVE  
 CYPRESS GLEN  
 AND  
 PIKES 3RD ADDITION**

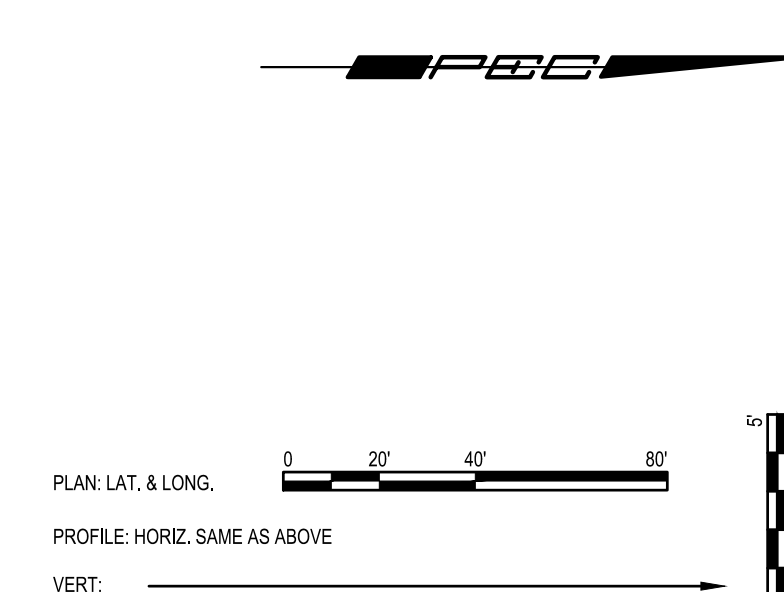
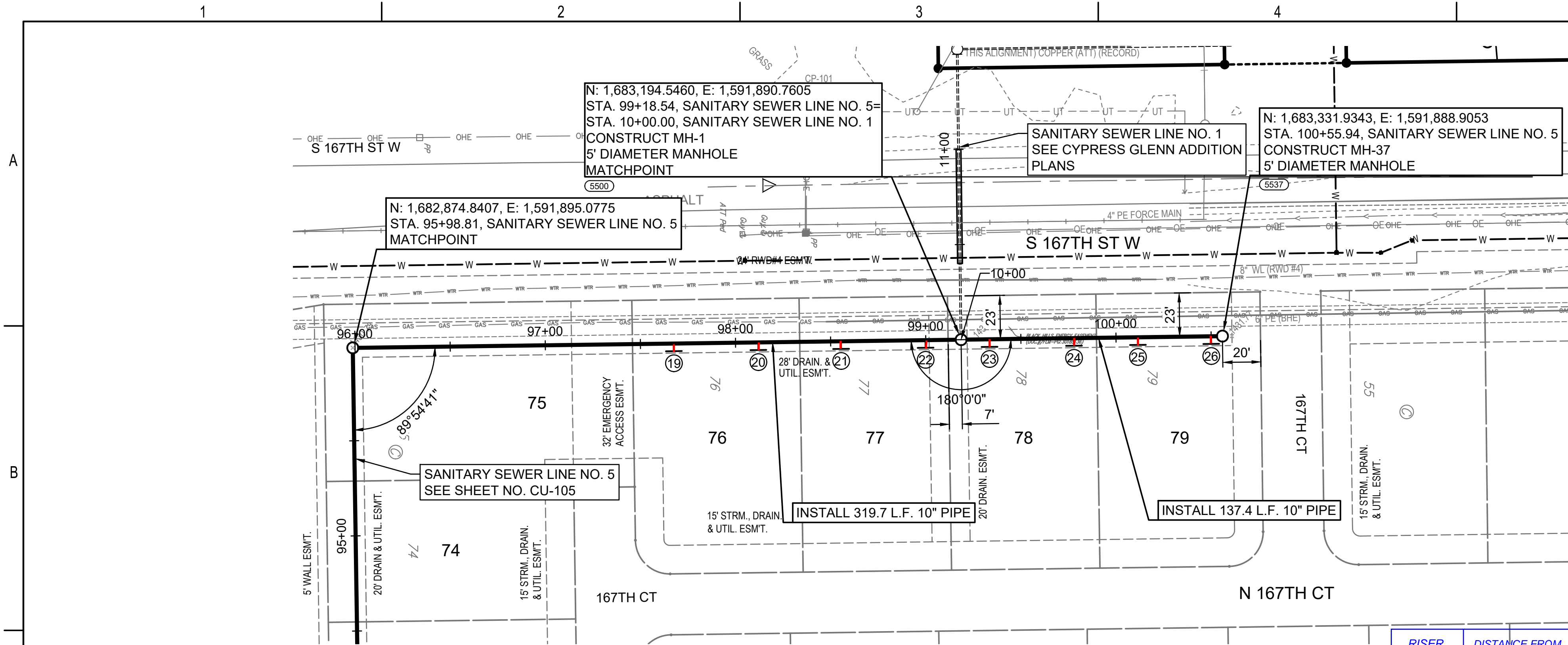
PAUL GUNZELMAN, P.E. - CITY ENGINEER  
 CITY OF WICHITA PROJECT NO. 468-2023-016039  
 CITY OF WICHITA PROJECT NO. 448-2023-016042

JOB NO.	210975-005
DATE	SEPTEMBER 2023
PM	AMD
DESIGNED BY	SNW
DRAWN BY	AJH
CHECKED BY	GAS

SANITARY SEWER LINE NO. 5

**CU-105**  
 8 OF 19

SAVED 10/11/2023 11:13:48 AM BY KURTIS DEKAT  
 PLOTTED 10/12/2023 9:56:25 AM BY KURTIS DEKAT  
 U:\WICHITA-CIVIL\2021\10975005\PEC\DRAWINGS\210975-005-CU-106.DWG

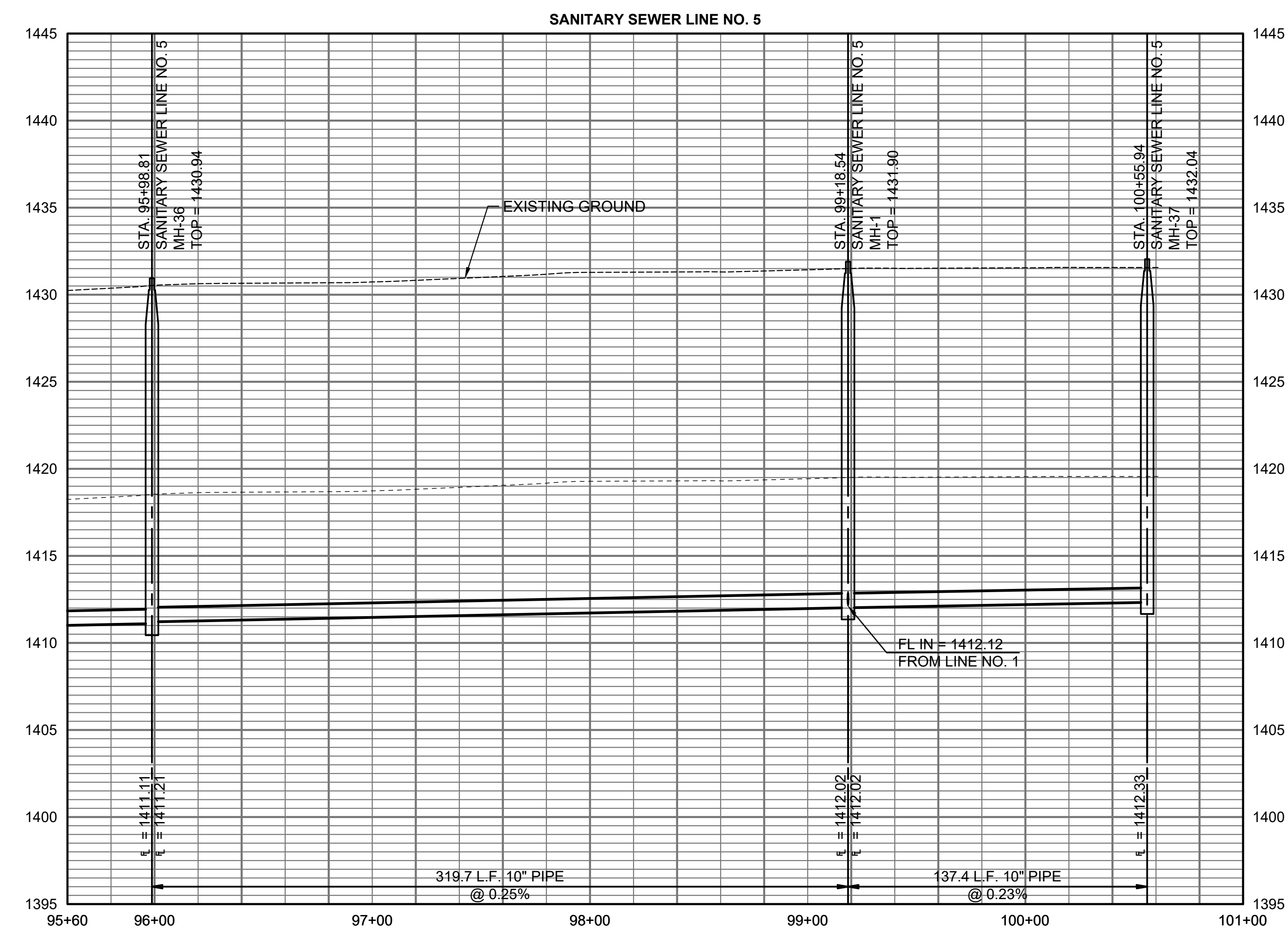


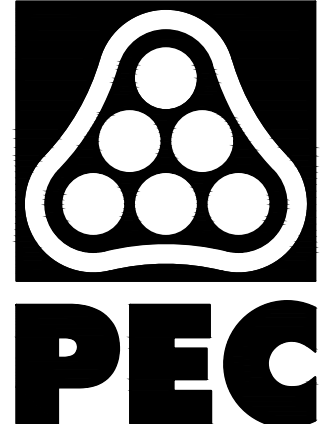
**LEGEND**

- (5500) - SEE SHEET NO. CU-100 FOR SANITARY SEWER COORDINATES (TYP.)
- ① - DENOTES SEWER SERVICE. SEE THIS SHEET FOR SEWER SERVICE SCHEDULE AND SHEET NO. CU-503 FOR DETAILS.


RISER NO.	DISTANCE FROM MAIN TO RISER	DISTANCE FROM	
		UPSTREAM MH	DOWNSTREAM MH
19	4' Rt.	151'	169'
20	4' Rt.	107'	213'
21	4' Rt.	64'	256'
22	4' Rt.	19'	301'
23	4' Rt.	123'	15'
24	4' Rt.	78'	60'
25	4' Rt.	45'	93'
26	4' Rt.	6'	132'

NUMBER	TYPE	LOT NO.	BLOCK NO.	LINE NO.	STATION	DIRECTION	APPROXIMATE VERTICAL (FT)	APPROXIMATE HORIZONTAL (FT)
19	4" TEE	76	C	5	97+68	RT	15	4
20	4" TEE	76	C	5	98+12	RT	15	4
21	4" TEE	77	C	5	98+55	RT	15	4
22	4" TEE	77	C	5	99+00	RT	15	4
23	4" TEE	78	C	5	99+33	RT	15	4
24	4" TEE	78	C	5	99+78	RT	15	4
25	4" TEE	79	C	5	100+11	RT	15	4
26	4" TEE	79	C	5	100+50	RT	15	4






PROFESSIONAL ENGINEERING CONSULTANTS  
 303 SOUTH TOPEKA  
 WICHITA, KS 67202  
 316-262-2691 www.pec1.com



CITY OF WICHITA



GAGE SCHEER  
 LICENSED  
 28775  
 10/17/2023  
 KANSAS  
 PROFESSIONAL ENGINEER

**SANITARY SEWER EXTENSION  
 TO SERVE  
 CYPRESS GLEN  
 AND  
 PIKES 3RD ADDITION**

PAUL GUNZELMAN, P.E. - CITY ENGINEER  
 CITY OF WICHITA PROJECT NO. 448-2023-016039  
 CITY OF WICHITA PROJECT NO. 448-2023-016042

JOB NO.	210975-005
DATE	SEPTEMBER 2023
PM	AMD
DESIGNED BY	SNW
DRAWN BY	AJH
CHECKED BY	GAS

SANITARY SEWER LINE NO. 5

**CU-106**  
 9 OF 19