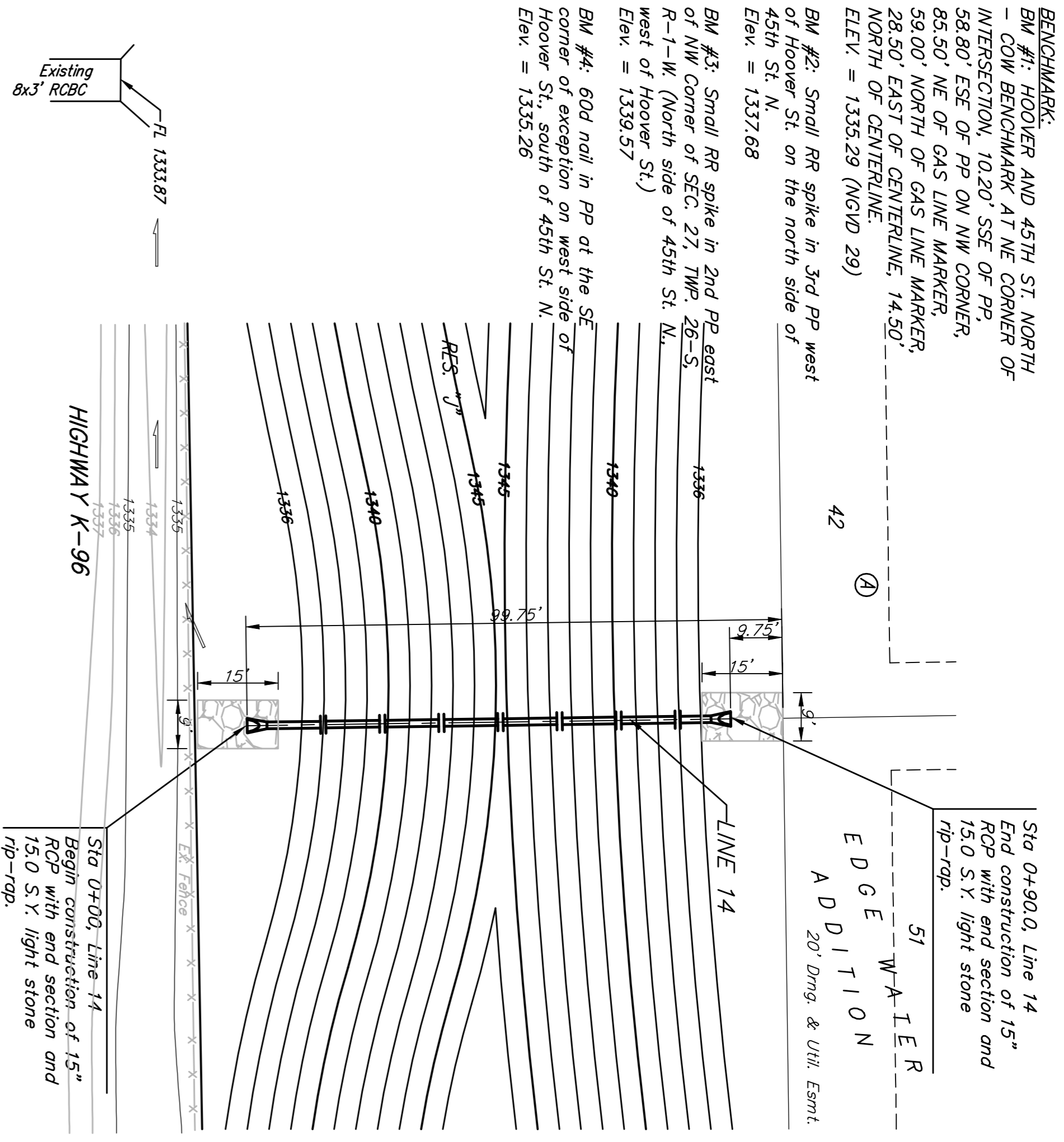


BENCHMARK:
 BM #1: HOOVER AND 45TH ST NORTH
 - COW BENCHMARK AT NE CORNER OF
 INTERSECTION, 10.20' SSE OF PP,
 58.80' ESE OF PP ON NW CORNER,
 85.50' NE OF GAS LINE MARKER,
 59.00' NORTH OF GAS LINE MARKER,
 28.50' EAST OF CENTERLINE, 14.50'
 NORTH OF CENTERLINE,
 ELEV. = 1335.29 (NGVD 29)

BM #2: Small RR spike in 3rd PP west
 of Hoover St. on the north side of
 45th St. N.
 Elev. = 1337.68

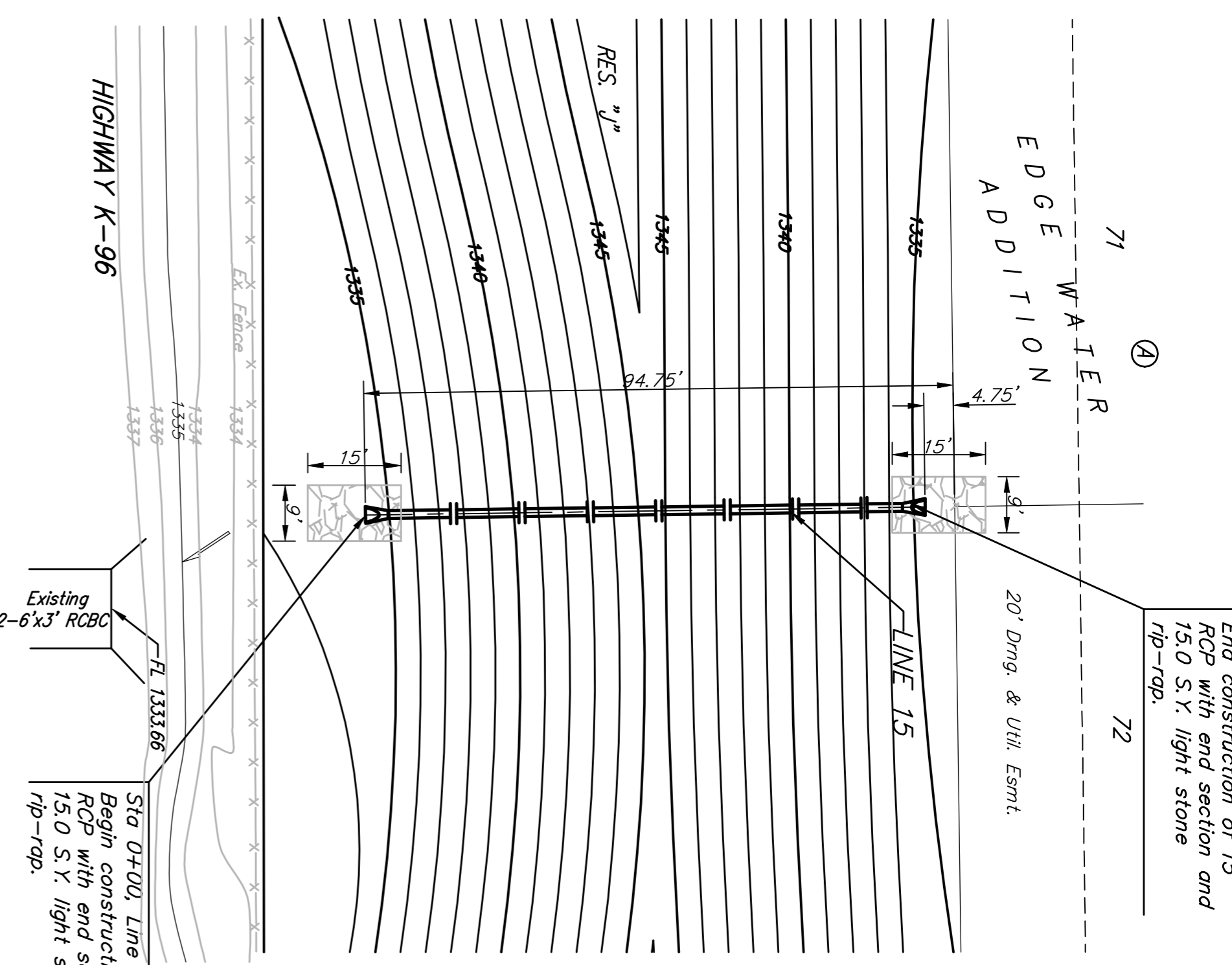
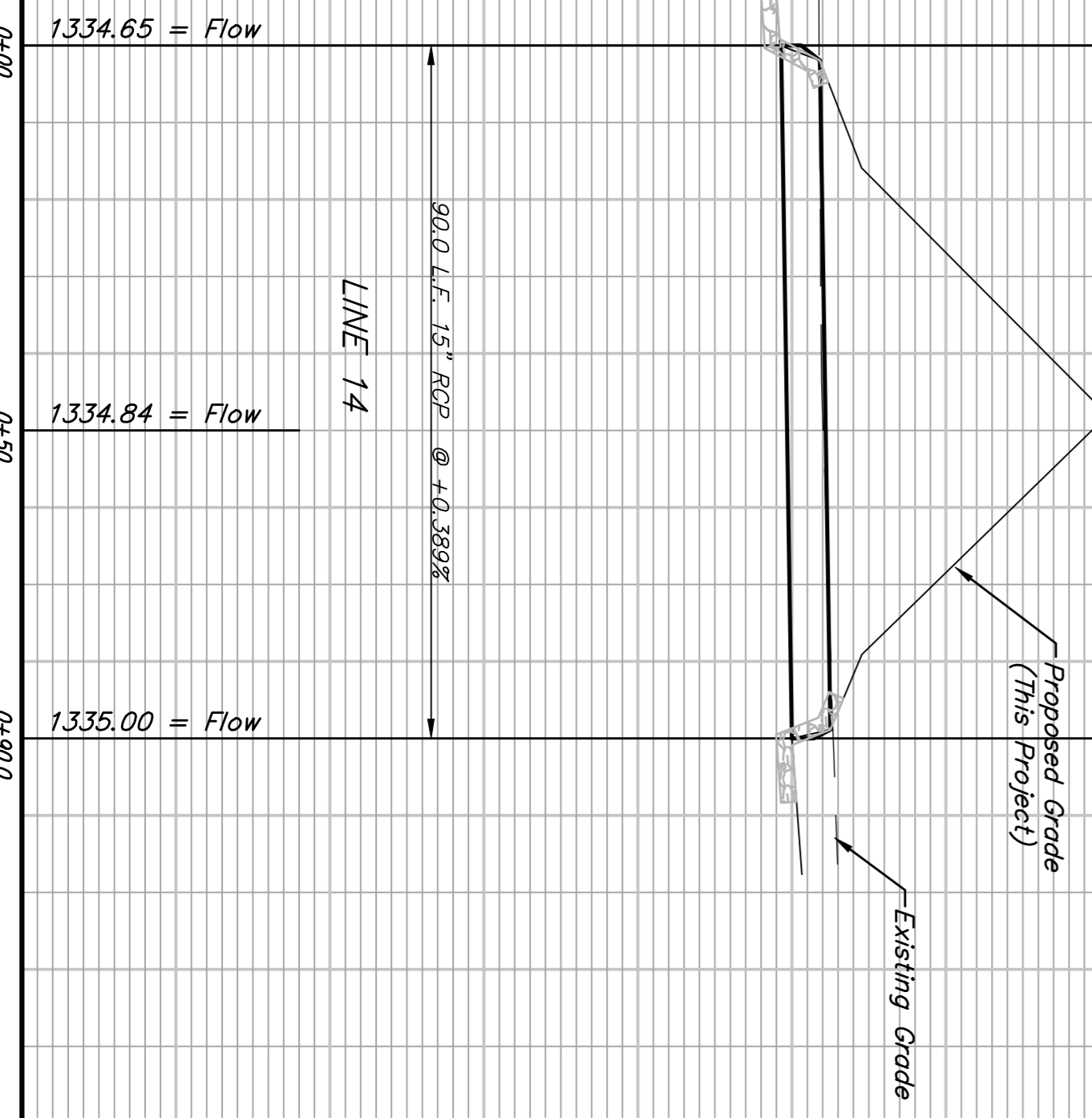
BM #3: Small RR spike in 2nd PP east
 of NW corner of SEC. 27, TWP. 26-S,
 R-1-W. (North side of 45th St. N.,
 west of Hoover St.)
 Elev. = 1339.57

BM #4: 60d nail in PP at the SE
 corner of exception on west side of
 Hoover St. south of 45th St. N.
 Elev. = 1335.26



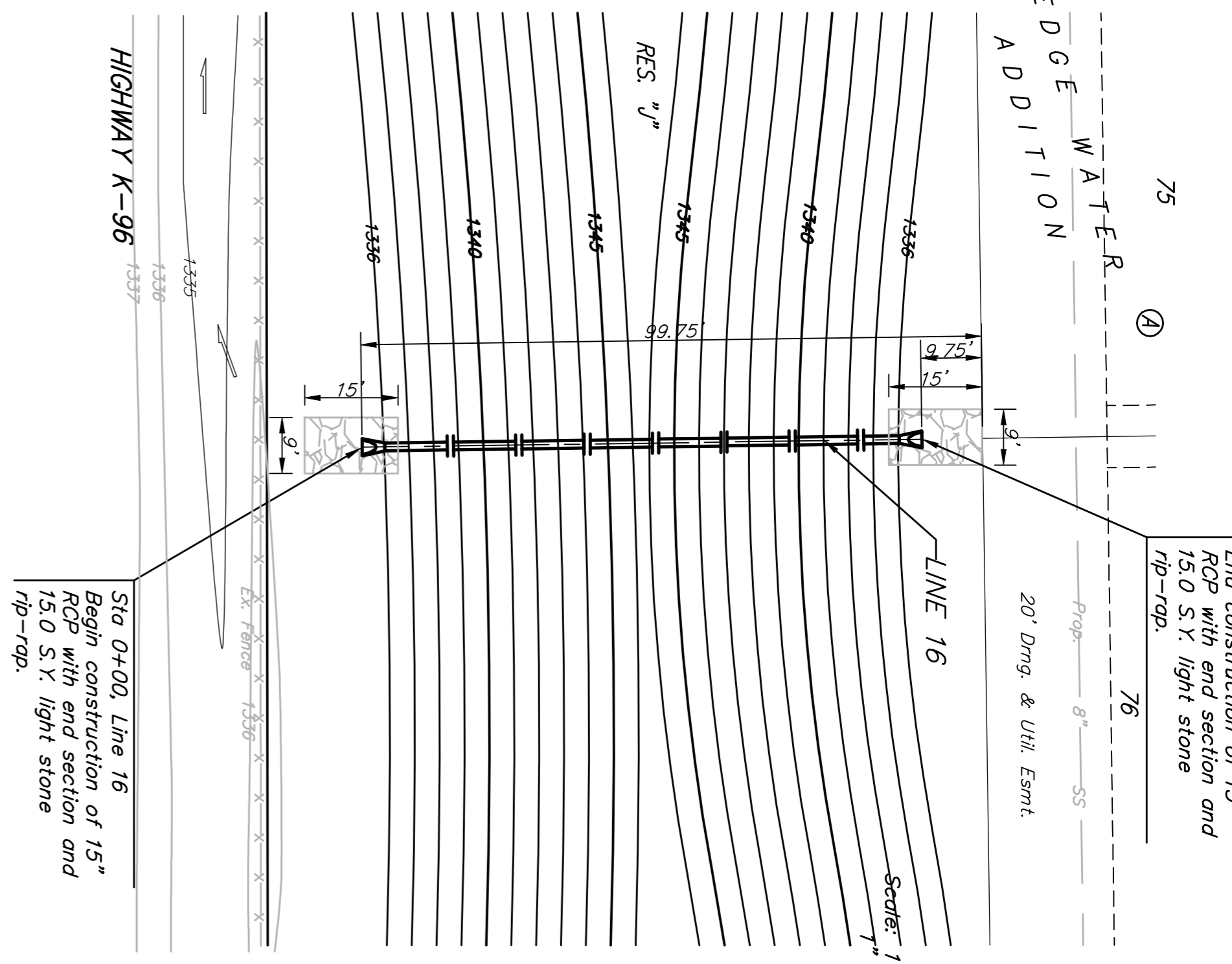
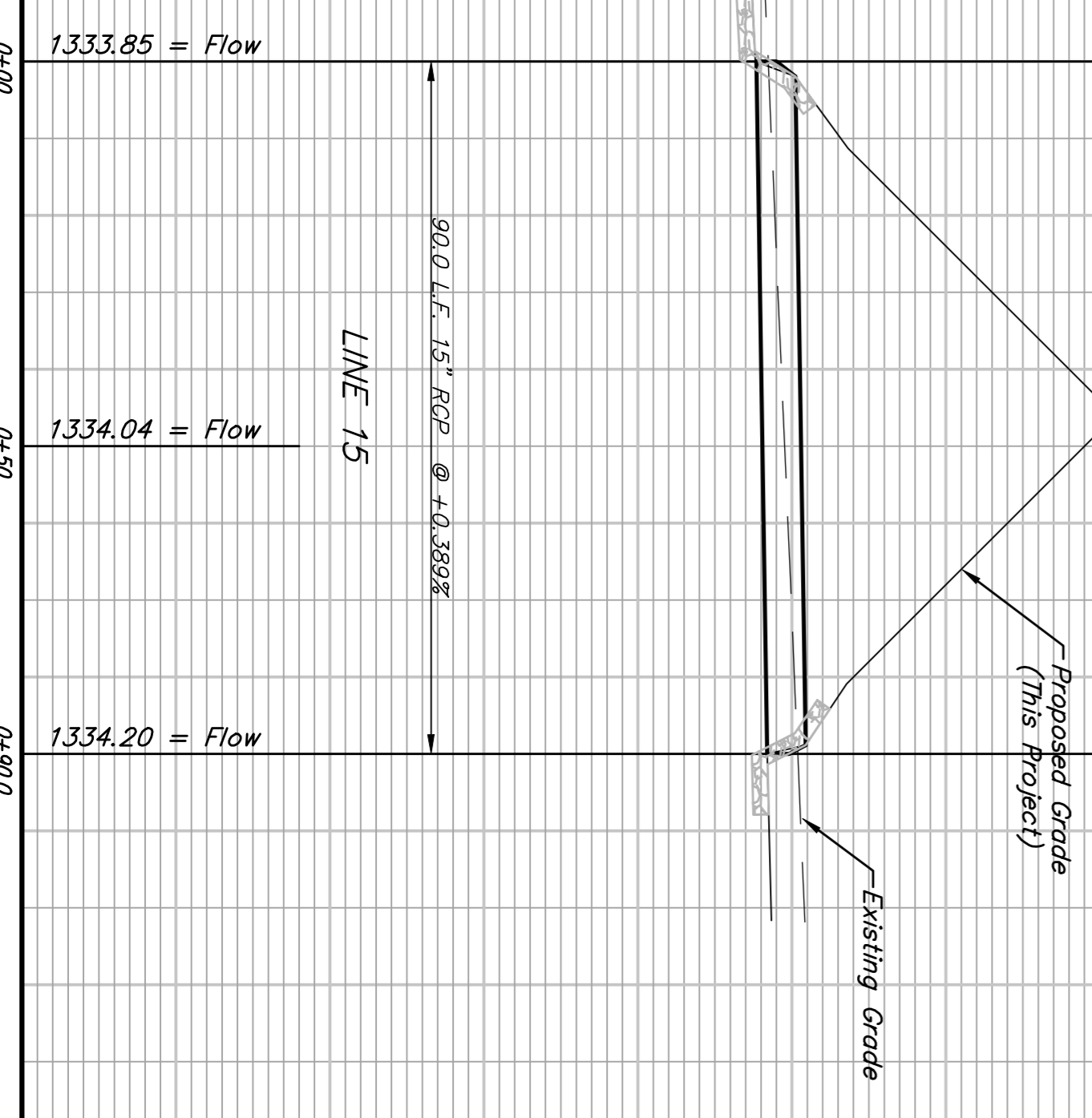
Sta 0+00, Line 14
 Begin construction of 15"
 RCP with end section and
 15.0 S.Y. light stone
 rip-rap.

Sta 0+90.0, Line 14
 End construction of 15"
 RCP with end section and
 15.0 S.Y. light stone
 rip-rap.



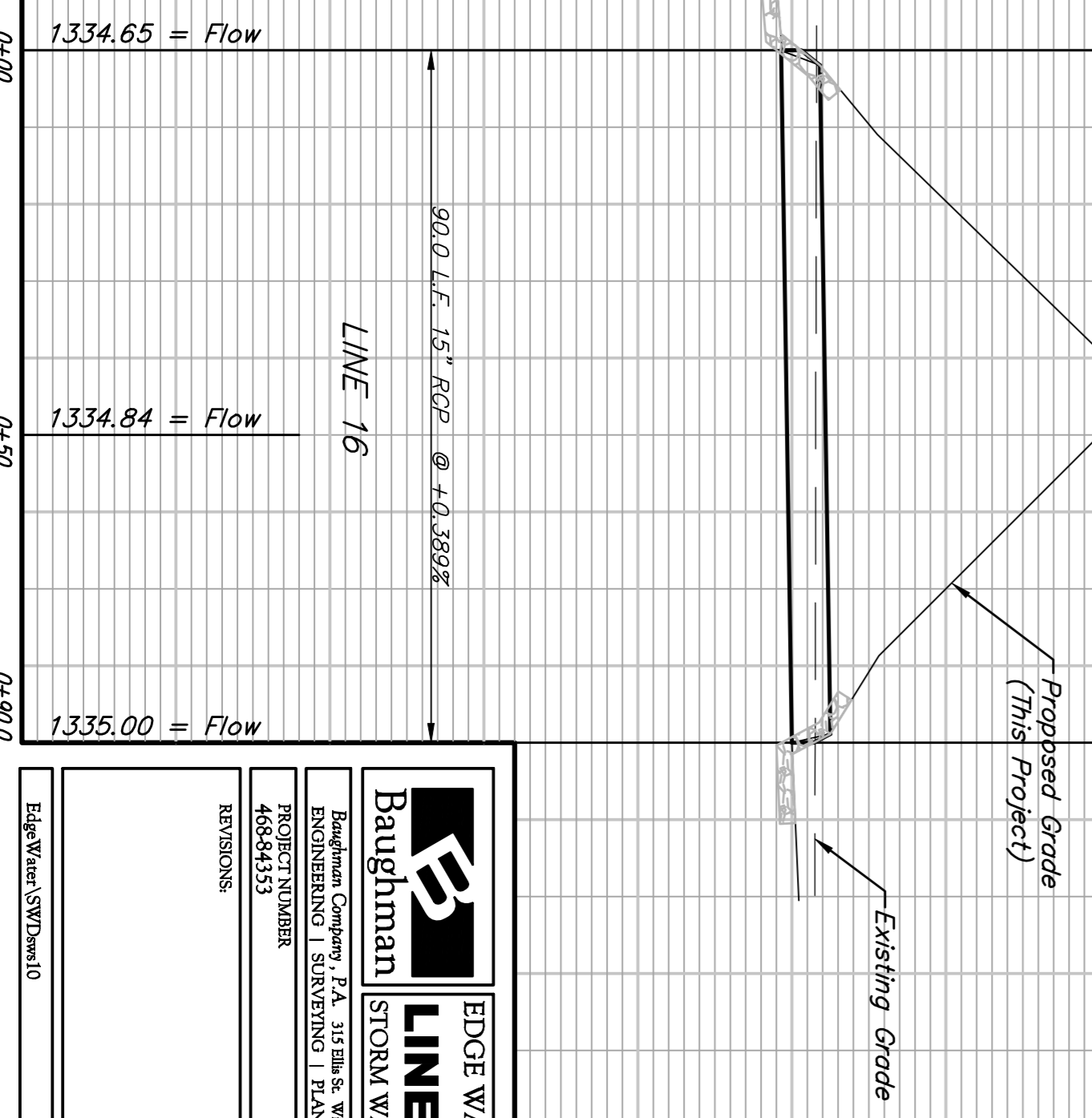
Sta 0+00, Line 15
 Begin construction of 15"
 RCP with end section and
 15.0 S.Y. light stone
 rip-rap.

Sta 0+90.0, Line 15
 End construction of 15"
 RCP with end section and
 15.0 S.Y. light stone
 rip-rap.



Sta 0+00, Line 16
 Begin construction of 15"
 RCP with end section and
 15.0 S.Y. light stone
 rip-rap.

Sta 0+90.0, Line 16
 End construction of 15"
 RCP with end section and
 15.0 S.Y. light stone
 rip-rap.



Baughman
 ENGINEERING | SURVEYING | PLANNING | LANDSCAPE ARCHITECTURE

EDGE WATER ADDITION
LINES 14, 15 & 16
 STORM WATER DRAIN IMPROVEMENTS

PROJECT NUMBER: 46844333
 DESIGN: TMS
 DATE: 08/07
 SCALE: 1" = 20' Horizontal, 1" = 5' Vertical
 SHEET: 10 OF 44

07.03.EB339