

BENCHMARKS:
 BM #1: City of Wichita Disc at Southwest Corner of 135th St. W. & 13th St. N. 30.00± S. of @ 35.00± W. of @ Elev. = 1355.65 NGVD29
 BM #2: Small Railroad Spike in 2nd HLP W. of 135th St. W. on South Side of 13th St. N., (N. Face of HLP). Elev. = 1359.50 NGVD29
 BM #3: Small Railroad Spike in 4th HLP W. of 135th St. W. on South Side of 13th St. N., (N. Face of HLP). Elev. = 1366.64 NGVD29

Scale: 1" = 20'
 • = Iron

Regrade ditch to ensure positive drainage in 100', west side. Cost of regrading to be incidental to "Site Clearing & Restoration"

Sta. 0+57.00, 40' Rt. Install Metro (SNS) ass'y as per City specs. "13th St N (14500 W)" & "Blackstone (1400 N)". (See Detail, Sheet 4)

Sta. 0+90.00, 27.25' Lt. Install subdivision benchmark (Flat survey marker No. 8134-08 3" top diameter) in top of curb. Cost shall be incidental to L.F. curb & gutter.

Sta. 0+60.00, 33' Lt. Install R1-1 (stop) sign.

Sta. 0+60.00, Begin Construction of 5" A.C. Pavement w/ 5" Reinf. Rock Base and 4' Wide Concrete Sidewalk (4").

Transition from full height (6-5/8") curb to roll (3-5/8") curb through wheelchair ramp (both sides).

Sta. 0+65.25, 1' Rt. Install R4-7 (Keep Right) & OM-1 Sign

Sta. 1+90.75, 1' Rt. Install R4-7 (Keep Right) & OM-1 Sign

Install 2-29' Long 4" PVC pipes (Left) & 2-27' long 4" PVC pipes (Right) under pavement. Cap each end. Mark End of Pipes with Wooden Stake Painted Pink. Cost subsidiary to Pavement Cost.

Const. 7" Reinforced Concrete Valley Gutter Pavement on 5" Rein. Rock Base w/ Monolithic Edge Curb. (6-5/8") (See Detail, Sheet 5)

Construct Std. Type A Wheel Chair Ramp with Detectable Warning (Both Sides) (See Detail, Sheet 5)

Sta. 2+53.00, 35' Lt. Install Std. D3 (SNS) Ass'y as per City Specs "Blackstone" & Metro SNS "Blackstone Ct" (1403-1455) (See Detail, Sheet 4)

Sta. 2+59.25, 1' Rt. Install R4-7 (Keep Right) & OM-1 Sign

Construct 4' Wide Concrete Sidewalk (4")

Install 2-29' Long 4" PVC pipes (Left) & 2-27' long 4" PVC pipes (Right) under pavement. Cap each end. Mark End of Pipes with Wooden Stake Painted Pink. Cost subsidiary to Pavement Cost.

Construct 5" A.C. Pvm't Hook-up w/ 5" Reinf. Rock Base

Contractor of this Project to Match Edge of Proposed Pavement by "Others". See Project #472-B4400

Install 100 L.F. 24" R.C.P. w/ End Sections. Install 15.0 S.Y. Light Stone Rip-rap As Indicated (Each Side). Regrade Area as Necessary for Proper Drainage. Cost of Regrading to be Included in Pipe Cost.

Regrade ditch to ensure positive drainage in 300', east side. Cost of regrading to be incidental to "Site Clearing & Restoration"

Const. Full-Height Low Edge Medial Curb & Gutter. (6-5/8") (See Detail, Sheet 6) Median shall be filled with friable fill material

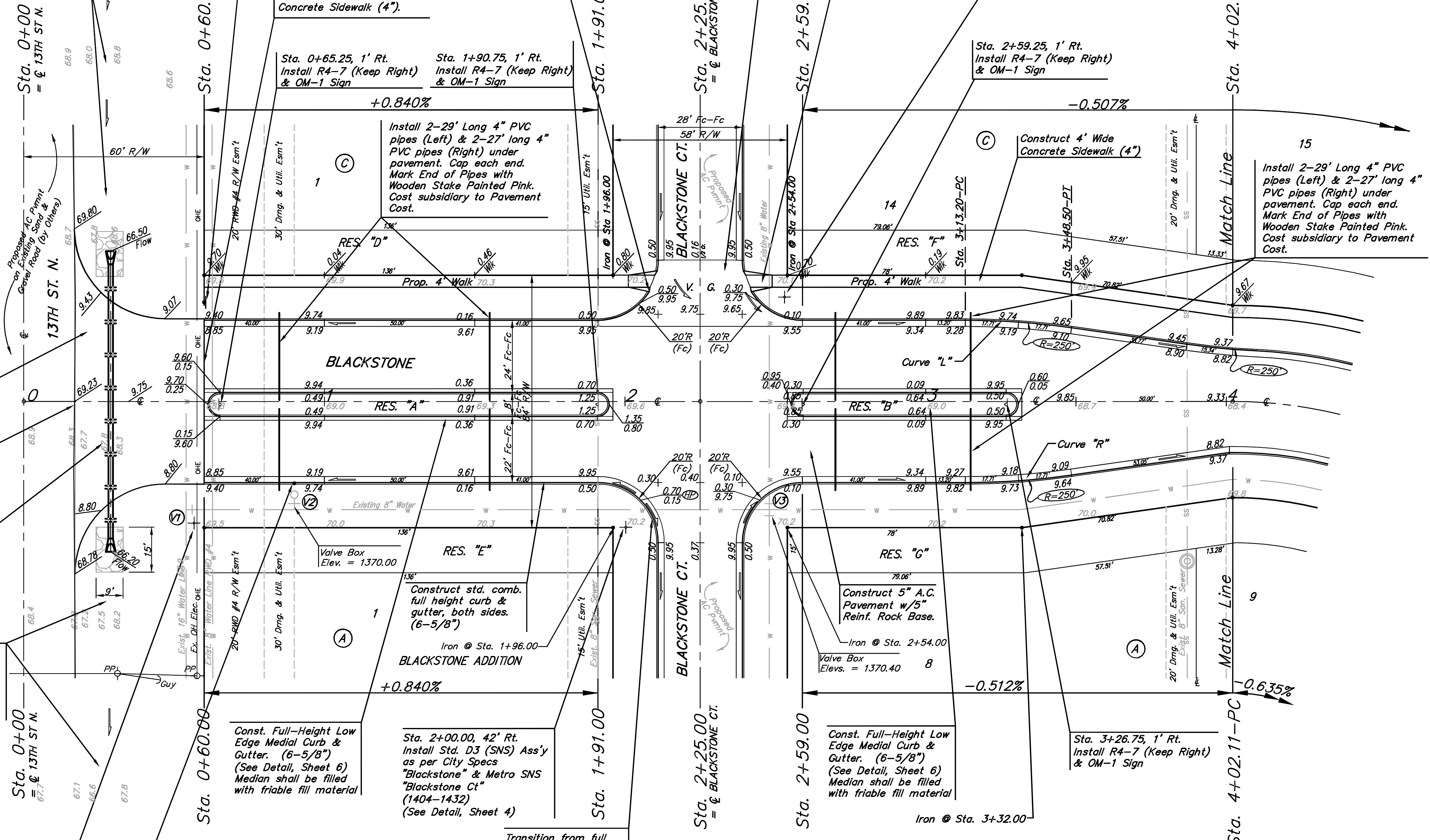
Sta. 2+00.00, 42' Rt. Install Std. D3 (SNS) Ass'y as per City Specs "Blackstone" & Metro SNS "Blackstone Ct" (1404-1432) (See Detail, Sheet 4)

Transition from full height (6-5/8") curb to roll (3-5/8") curb through radius (both sides).

Const. Full-Height Low Edge Medial Curb & Gutter. (6-5/8") (See Detail, Sheet 6) Median shall be filled with friable fill material

Sta. 3+26.75, 1' Rt. Install R4-7 (Keep Right) & OM-1 Sign

P.V.I. Elev. = 1369.37 No V.C.



Curve "L"

Curve Data Based on Face of Curb
 Rad. = 250' Delta = 8°07'01" Tangent = 17.74'
 Arc = 35.42' L.C. = 35.39' Def/Ft. = 6.87488 Min.

CL Station	Arc	FACE CHORD LENGTHS	8' Rt.	Def.	T. Def.
3+13.30, 27' Lt.	-	-	-	0'00'00"	0'00'00"
3+30.89, 26.37' Lt.	17.71'	18.27'	18.27'	2'01'45"	2'01'45"
3+48.50, 24.50' Lt.	17.71'	18.27'	18.27'	2'01'46"	4'03'31"

Curve "R"

Curve Data Based on Face of Curb
 Rad. = 250' Delta = 8°07'01" Tangent = 17.74'
 Arc = 35.42' L.C. = 35.39' Def/Ft. = 6.87488 Min.

CL Station	Arc	FACE CHORD LENGTHS	8' Rt.	Def.	T. Def.
3+13.30, 27' Rt.	-	-	-	0'00'00"	0'00'00"
3+30.89, 26.37' Rt.	17.71'	18.27'	18.27'	2'01'45"	2'01'45"
3+48.50, 24.50' Rt.	17.71'	18.27'	18.27'	2'01'46"	4'03'31"

Baughman Blackstone Addition - Phase I
BLACKSTONE
 STA. 0+00 TO STA. 4+02.11

Baughman Company, P.A. 315 Ellis St. Wichita, KS 67211 P 316-262-7271 F 316-262-0149
 ENGINEERING | SURVEYING | PLANNING | LANDSCAPE ARCHITECTURE

PROJECT NUMBER: 472-84397 DESIGN: JAK DRAWN: AMH/TMS
 APPROVED: NBW DATE: 8/22/07
 SCALE: Noted
 SHEET: 7 OF 45

Blackstone\Phase 1\Str 06-08-E615