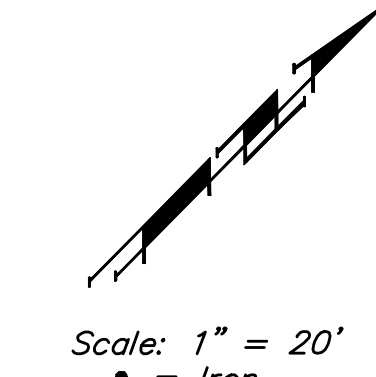


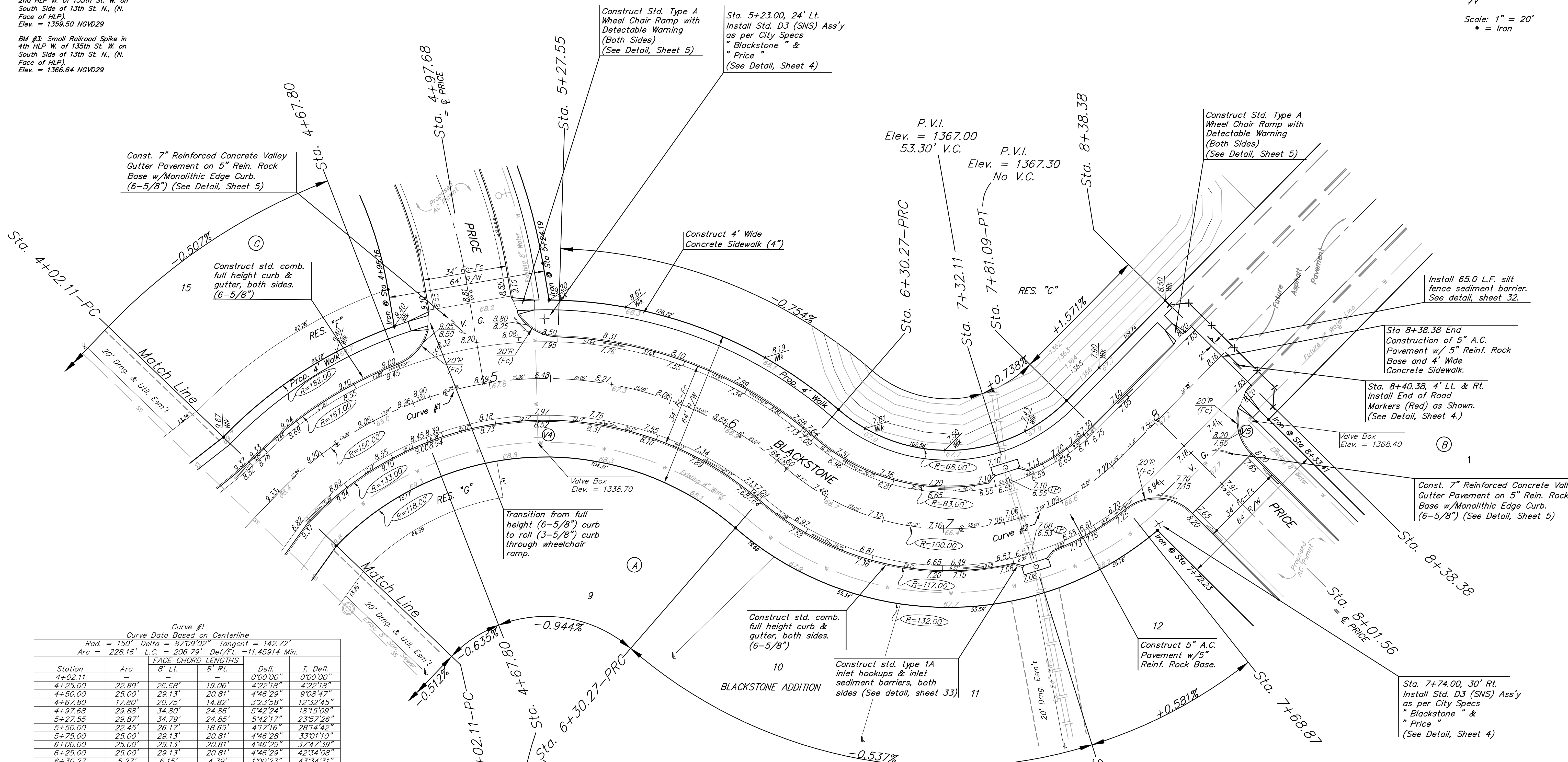
BENCHMARKS:
 BM #1: City of Wichita Disc at Southwest corner of 135th St. W. & 13th St. N. 30.00± S. of @ 35.00± W. of @ Elev. = 1355.65 NGVD29

BM #2: Small Railroad Spike in 2nd HLP W. of 135th St. W. on South Side of 13th St. N., (N. Face of HLP). Elev. = 1359.50 NGVD29

BM #3: Small Railroad Spike in 4th HLP W. of 135th St. W. on South Side of 13th St. N., (N. Face of HLP). Elev. = 1366.64 NGVD29



Scale: 1" = 20'
 • = Iron



Curve #1
 Curve Data Based on Centerline
 Rad. = 150' Delta = 87°09'02" Tangent = 142.72'
 Arc = 228.16' L.C. = 208.79' Del/Ft. = 11.45914 Min.

Station	Arc	FACE CHORD LENGTHS		Defl.	T. Defl.
		8' Lt.	8' Rt.		
4+02.11	-	-	-	0'00"00"	0'00"00"
4+25.00	22.89'	26.68'	19.06'	4'22"18"	4'22"18"
4+50.00	25.00'	29.13'	20.81'	4'46"29"	9'08"47"
4+67.80	17.80'	20.75'	14.82'	3'23"58"	12'32"45"
4+97.68	29.88'	34.80'	24.86'	5'42"24"	18'15"09"
5+27.55	29.87'	34.79'	24.85'	5'42"17"	23'57"26"
5+50.00	22.45'	26.17'	18.69'	4'17"16"	28'14"42"
5+75.00	25.00'	29.13'	20.81'	4'46"28"	33'01"10"
6+00.00	25.00'	29.13'	20.81'	4'46"29"	37'47"39"
6+25.00	25.00'	29.13'	20.81'	4'46"29"	42'34"08"
6+30.27	5.27'	6.15'	4.39'	1'00"23"	43'34"31"

Curve #2
 Curve Data Based on Centerline
 Rad. = 100' Delta = 86°24'55" Tangent = 93.93'
 Arc = 150.82' L.C. = 136.93' Del/Ft. = 17.18909 Min.

Station	Arc	FACE CHORD LENGTHS		Defl.	T. Defl.
		8' Lt.	8' Rt.		
6+30.27	-	-	-	0'00"00"	0'00"00"
6+50.00	19.73'	14.77'	24.62'	5'39"08"	5'39"08"
6+75.00	25.00'	18.70'	31.17'	7'09"44"	12'48"52"
7+00.00	25.00'	18.70'	31.17'	7'09"44"	19'58"36"
7+25.00	25.00'	18.70'	31.17'	7'09"43"	27'08"19"
7+50.00	25.00'	18.70'	31.17'	7'09"44"	34'18"03"
7+68.87	18.87'	14.13'	23.55'	5'24"21"	39'42"24"
7+75.00	6.13'	4.60'	7.66'	1'45"23"	41'27"47"
7+81.09	6.09'	4.57'	7.61'	1'44"41"	43'12"28"

Baughman BLACKSTONE
 Blackstone Addition - Phase I
 Sta 4+02.11 to Sta 8+38.38

Baughman Company, P.A. 315 Ellis St. Wichita, KS 67211 P 316-262-7271 F 316-262-0149
 ENGINEERING | SURVEYING | PLANNING | LANDSCAPE ARCHITECTURE

PROJECT NUMBER 47284397	DESIGN JAK	DRAWN AMH/TMS
REVISIONS:	APPROVED NBW	DATE 8/22/07
	SCALE Noted	
	SHEET	

8 OF 45

Blackstone/Phase I/Str2 06-08-E615