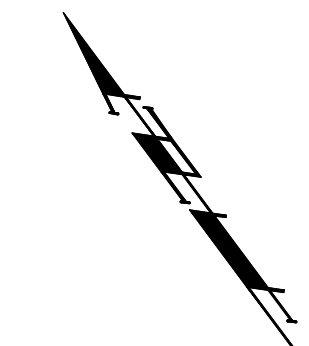


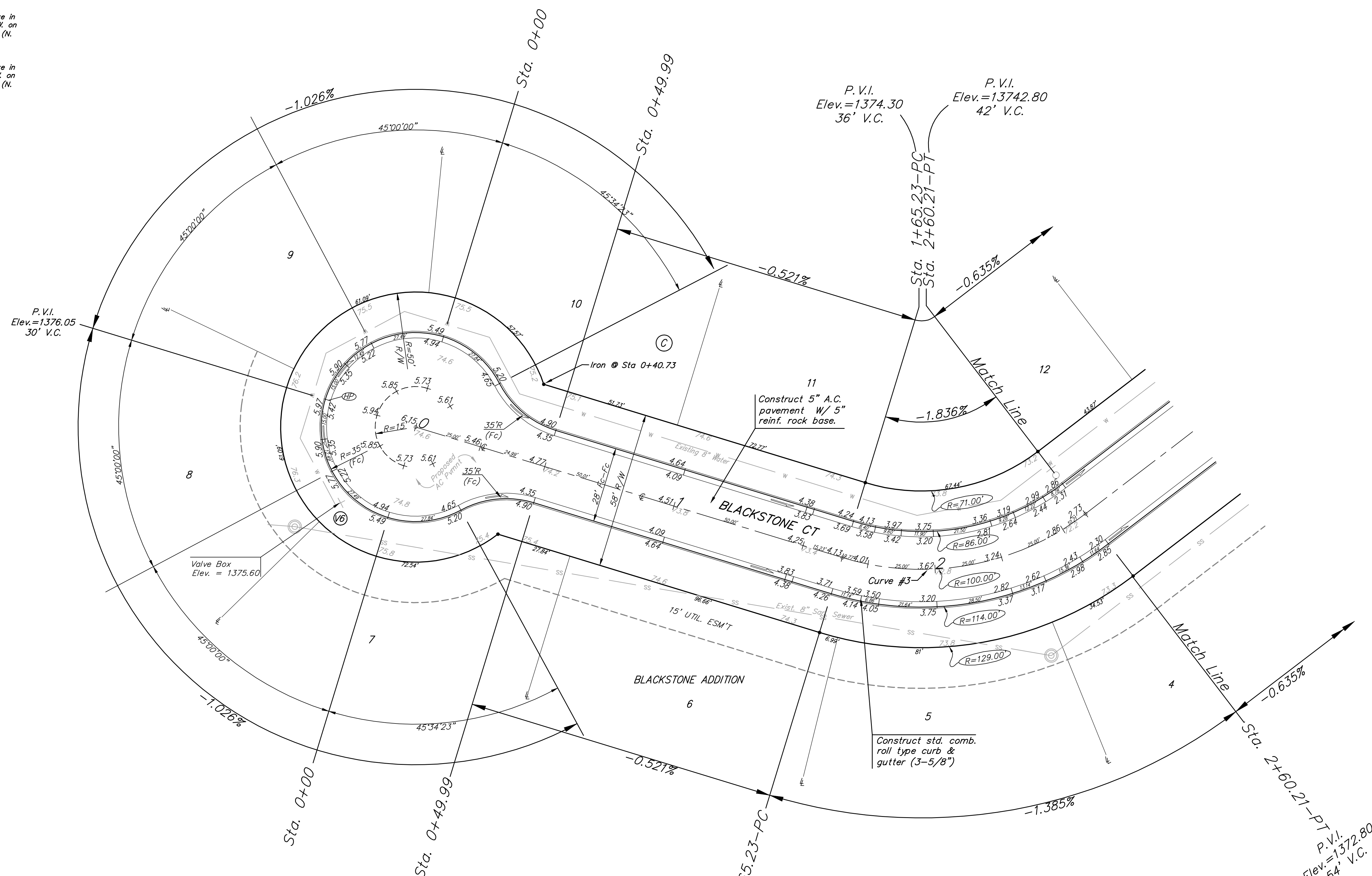
BENCHMARKS:
 BM #1: City of Wichita Disc at Southwest corner of 135th St. W. & 13th St. N. 30.00± S. of \odot 35.00± W. of \odot Elev. = 1355.65 NGVD29

BM #2: Small Railroad Spike in 2nd HLP W. of 135th St. W. on South Side of 13th St. N., (N. Face of HLP). Elev. = 1359.50 NGVD29

BM #3: Small Railroad Spike in 4th HLP W. of 135th St. W. on South Side of 13th St. N., (N. Face of HLP). Elev. = 1366.64 NGVD29



Scale: 1" = 20'
 • = Iron



Curve #3
 Curve Data Based on Centerline

Rad. = 100' Delta = 54° 25' 09" Tangent = 51.41'
 Arc = 94.98' L.C. = 91.45' Def/ft. = 17.18862 Min.

Station	Arc	FACE CHORD LENGTHS		Defl.	T. Defl.
		8' Lt.	8' Rt.		
1+65.23	-	-	-	0'00"00"	0'00"00"
1+75.00	9.77'	7.62'	11.91'	2'47'56"	2'47'56"
2+00.00	25.00'	19.45'	30.42'	7'09'43"	9'57'39"
2+25.00	25.00'	19.45'	30.42'	7'09'43"	17'07'22"
2+50.00	25.00'	19.45'	30.42'	7'09'43"	24'17'05"
2+60.21	10.21'	7.96'	12.45'	2'55'30"	27'12'35"

Roll type curb & gutter to be constructed on the pavement on this sheet.
 Top of curb elevation are given for full height curb.

Baughman		Blackstone Addition - Phase I	
BLACKSTONE CT		Lots 1-14, Block C	
Baughman Company, P.A. 315 Ellis St. Wichita, KS 67211 P 316-262-7271 F 316-262-0149			
ENGINEERING SURVEYING PLANNING LANDSCAPE ARCHITECTURE			
PROJECT NUMBER 472-84397	DESIGN JAK	DRAWN AMH/TMS	
REVISIONS:	APPROVED NBW	DATE 8/22/07	
SCALE Noted		SHEET 9 OF 45	
Blackstone\Phase I\St3		06-08-E615	