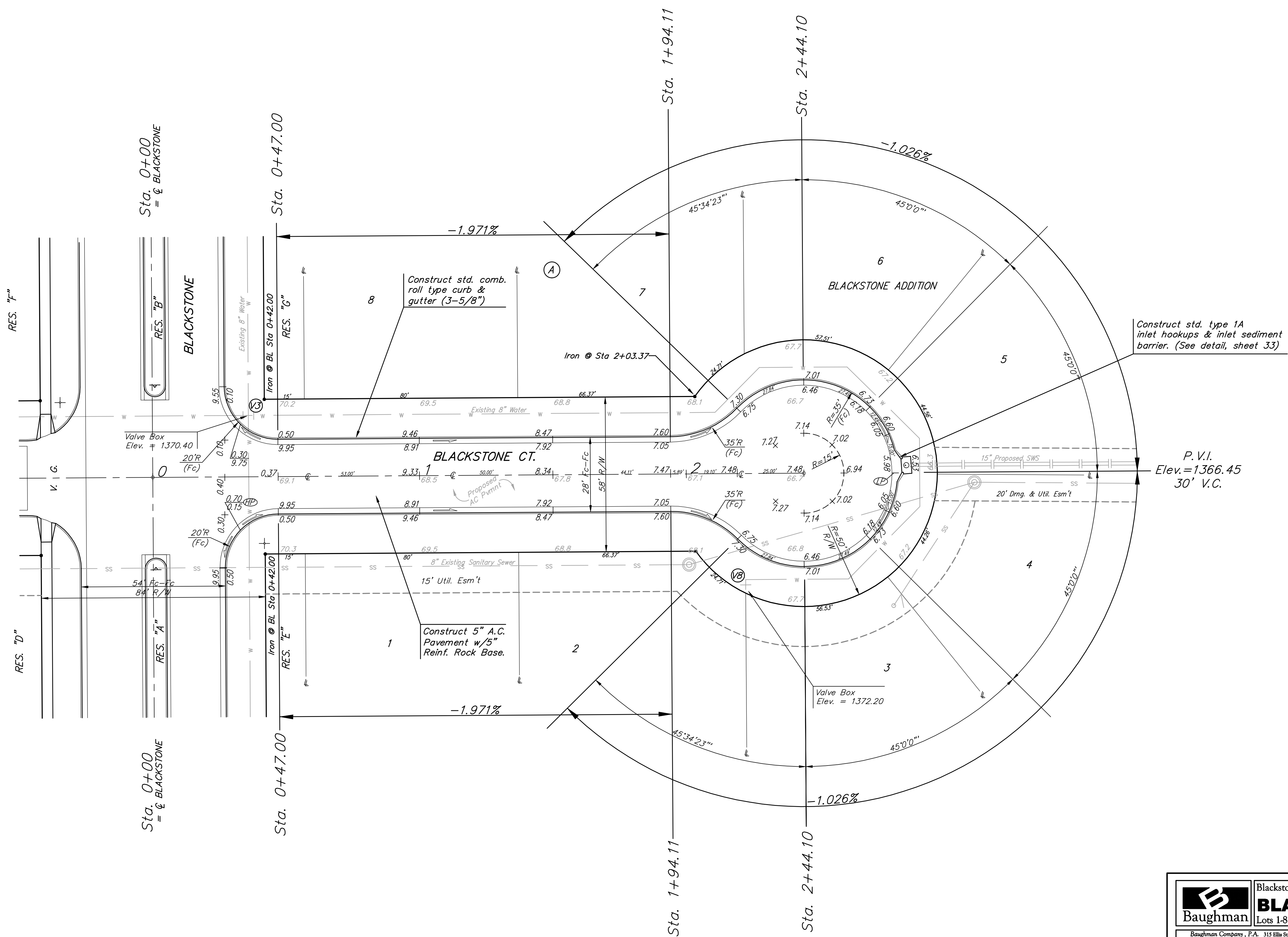


**BENCHMARKS:**  
 BM #1: City of Wichita Disc at Southwest Corner of 135th St. W. & 13th St. N. 30.00± S. of  $\odot$  35.00± W. of  $\odot$  Elev. = 1355.65 NGVD29

BM #2: Small Railroad Spike in 2nd HLP W. of 135th St. W. on South Side of 13th St. N., (N. Face of HLP). Elev. = 1359.50 NGVD29

BM #3: Small Railroad Spike in 4th HLP W. of 135th St. W. on South Side of 13th St. N., (N. Face of HLP). Elev. = 1366.64 NGVD29

Scale: 1" = 20'  
 • = Iron



Roll type curb & gutter to be constructed on the pavement on this sheet. Top of curb elevation are given for full height curb.

		Blackstone Addition - Phase I	
		<b>BLACKSTONE CT</b> Lots 1-8, Block A	
<small>Baughman Company, P.A. 315 Ellis St. Wichita, KS 67211 P 316-262-7271 F 316-262-0149        ENGINEERING   SURVEYING   PLANNING   LANDSCAPE ARCHITECTURE</small>			
PROJECT NUMBER 472-84397	DESIGN JAK	DRAWN AMH/TMS	
REVISIONS:	APPROVED NBW	DATE 8/22/07	
	SCALE Noted	SHEET	
		<b>11</b> OF <b>45</b>	
Blackstone\Phase I\Sta5			06-08-E615