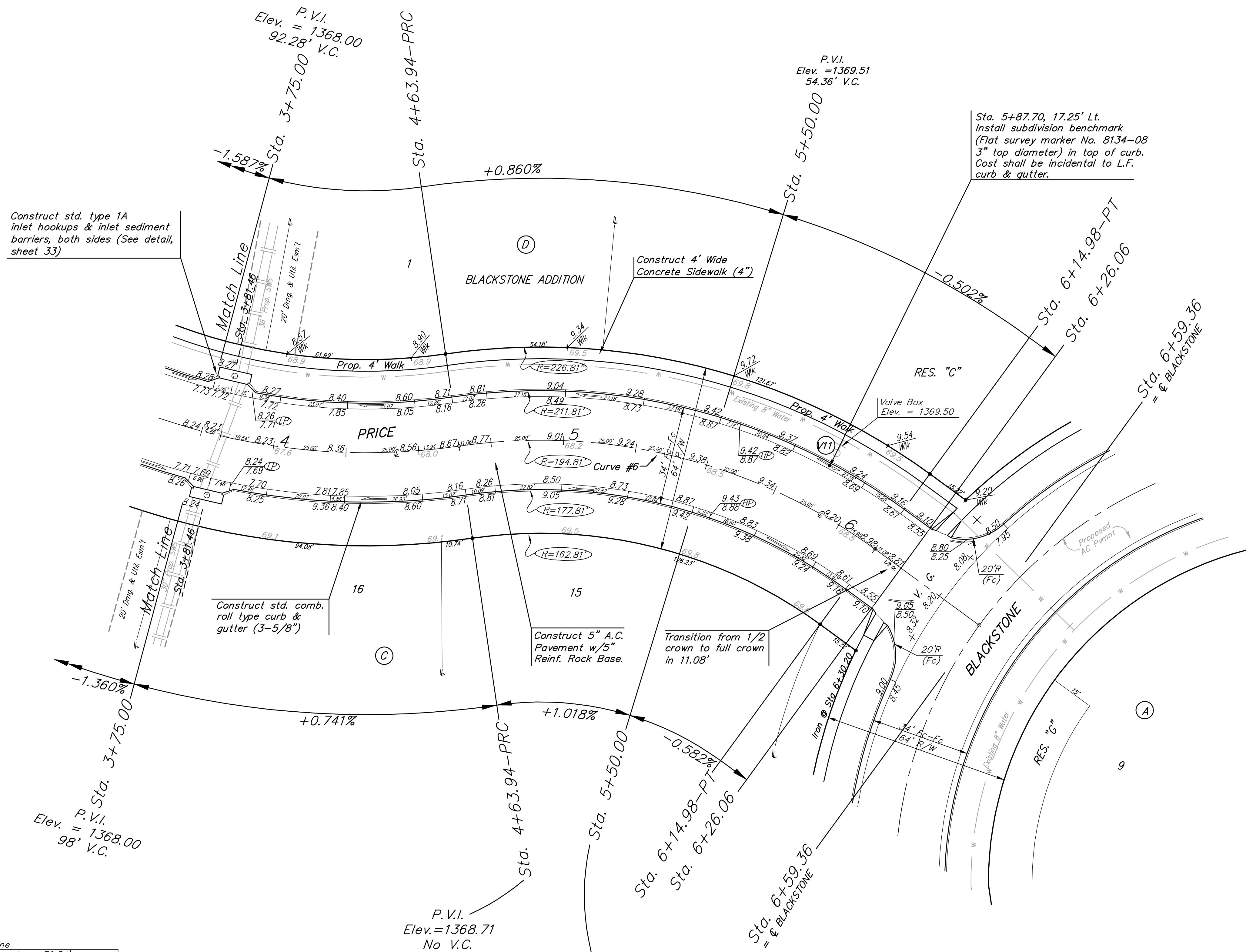
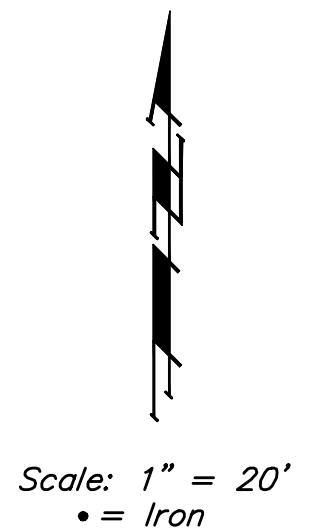


BENCHMARKS:
 BM #1: City of Wichita Disc at Southwest corner of 135th St. W. & 13th St. N. 30.00± S. of @ 35.00± W. of @ Elev. = 1355.65 NGVD29

BM #2: Small Railroad Spike in 2nd HLP W. of 135th St. W. on South Side of 13th St. N., (N. Face of HLP). Elev. = 1359.50 NGVD29

BM #3: Small Railroad Spike in 4th HLP W. of 135th St. W. on South Side of 13th St. N., (N. Face of HLP). Elev. = 1366.64 NGVD29



Curve #6
 Curve Data Based on Centerline
 Rad. = 194.81' Delta = 44° 25' 17" Tangent = 79.54'
 Arc = 151.04' L.C. = 147.28' Def./Ft. = 8.82311 Min.

Station	Arc	FACE CHORD LENGTHS		Defl.	T. Defl.
		8' Lt.	8' Rt.		
4+63.94	-	-	-	0'00'00"	0'00'00"
4+75.00	11.06'	12.48'	9.64'	1'37'35"	1'37'35"
5+00.00	25.00'	28.19'	21.78'	3'40'35"	5'18'10"
5+25.00	25.00'	28.19'	21.78'	3'40'34"	8'58'44"
5+50.00	25.00'	28.19'	21.78'	3'40'35"	12'39'19"
5+75.00	25.00'	28.19'	21.78'	3'40'35"	16'19'54"
6+00.00	25.00'	28.19'	21.78'	3'40'34"	20'00'28"
6+14.98	14.98'	16.90'	13.05'	2'12'11"	22'12'39"

Roll type curb & gutter to be constructed on the pavement on this sheet.
 Top of curb elevation are given for full height curb.

Baughman		Blackstone Addition - Phase I	
PRICE		Sta. 3+75.00 to 6+59.36	
Baughman Company, P.A. 315 Ellis St. Wichita, KS 67211 P 316-262-7271 F 316-262-0149			
ENGINEERING SURVEYING PLANNING LANDSCAPE ARCHITECTURE			
PROJECT NUMBER 472-84397	DESIGN JAK	DRAWN AMH/TMS	
REVISIONS:	APPROVED NBW	DATE 8/22/07	
	SCALE Noted		
	SHEET		
			13 OF 45
Blackstone\Phase I\Str7		06-08-E615	