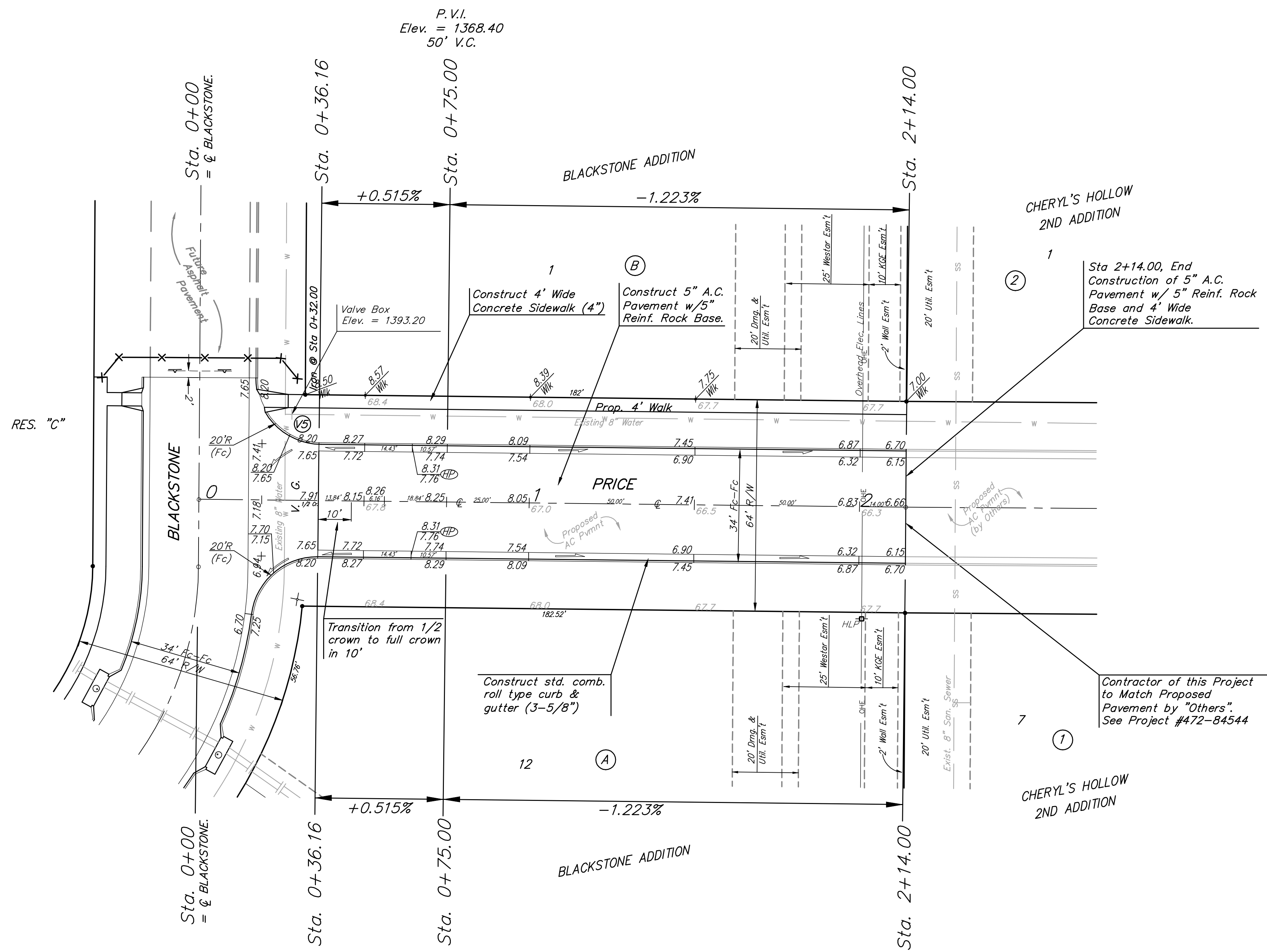
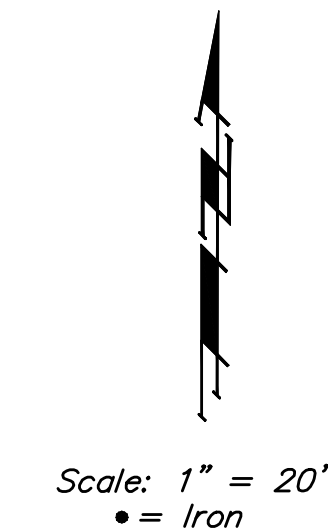


BENCHMARKS:
 BM #1: City of Wichita Disc at Southwest Corner of 135th St. W. & 13th St. N. 30.00± S. of @ 35.00± W. of @ Elev. = 1355.65 NGVD29

BM #2: Small Railroad Spike in 2nd HLP W. of 135th St. W. on South Side of 13th St. N., (N. Face of HLP). Elev. = 1359.50 NGVD29

BM #3: Small Railroad Spike in 4th HLP W. of 135th St. W. on South Side of 13th St. N., (N. Face of HLP). Elev. = 1366.64 NGVD29



P.V.I.
 Elev. = 1368.40
 50' V.C.

P.V.I.
 Elev. = 1368.40
 50' V.C.

Subdivision Bench Marks

Street & Station	Location Description	Elevation
Blackstone 0+90.00, 27.25' Lt.	Adjacent to Fire Hydrant at intersection of Blackstone & 13th St. N.	
Blackstone Ct. 2+60.21, 14.25' Lt.	Adjacent to Fire Hydrant in front of Lot 11, Block C.	
Price 0+39.09, 17.25' Lt.	Adjacent to Fire Hydrant at SE end of east curb return of Obsidian & Price.	
Price 0+39.09, 17.25' Lt.	Adjacent to Fire Hydrant in front of Res. C.	

Roll type curb & gutter to be constructed on the pavement on this sheet.
 Top of curb elevation are given for full height curb.

Blackstone Addition - Phase I Sta 0+36.16 to Sta 2+14.00	
<small>Baughman Company, P.A. 315 Ellis St. Wichita, KS 67211 F 316-262-7271 F 316-262-0149 ENGINEERING SURVEYING PLANNING LANDSCAPE ARCHITECTURE</small>	
PROJECT NUMBER 472-84397	DESIGN DRAWN JAK AMH/TMS
APPROVED NBW	DATE 8/22/07
REVISIONS:	SCALE Noted
SHEET 14 OF 45	
<small>Blackstone\Phase I\Sta8 06-08-E615</small>	