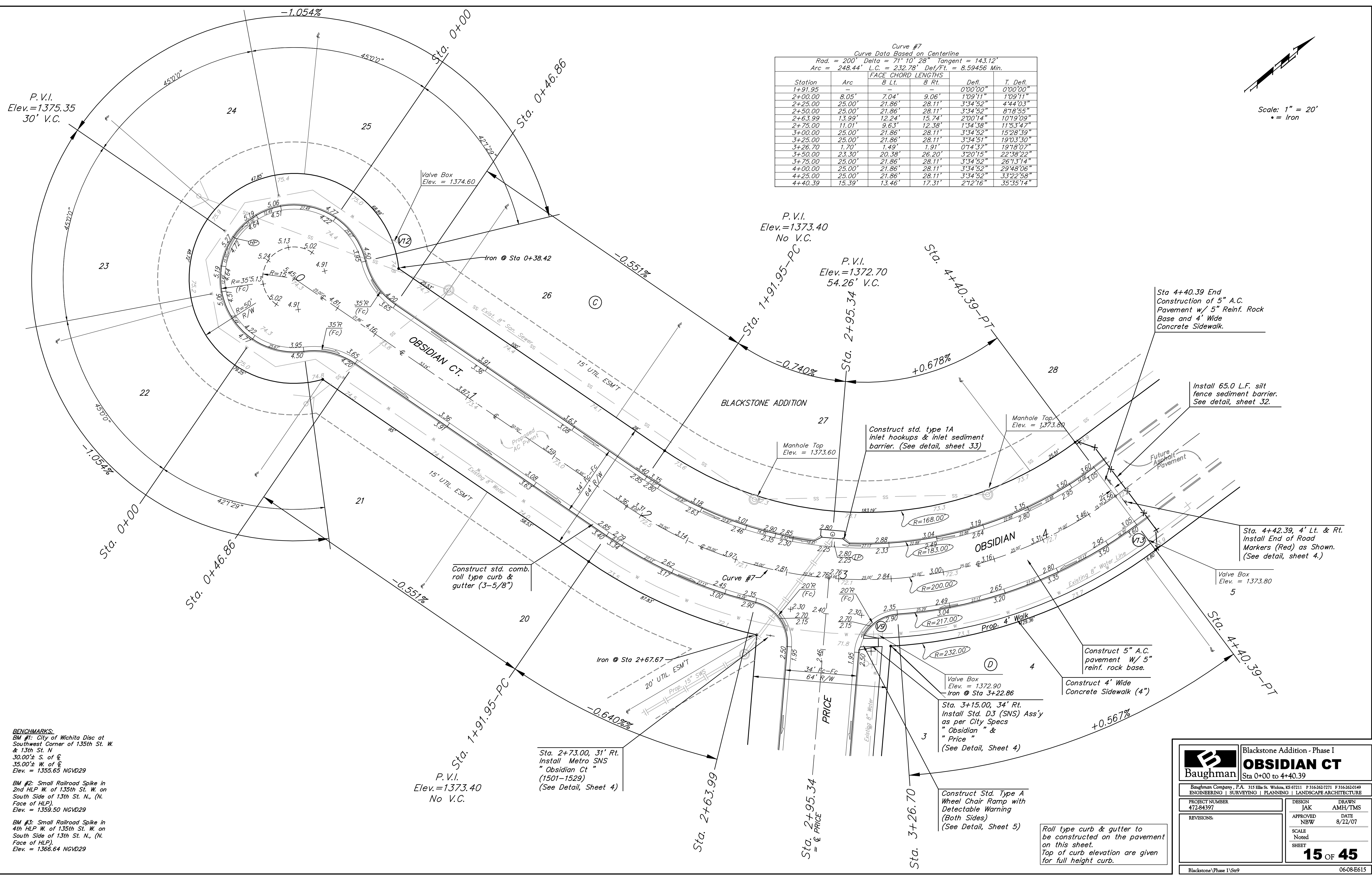


Scale: 1" = 20'
• = Iron

Curve #7
Curve Data Based on Centerline
Rad. = 200' Delta = 71° 10' 28" Tangent = 143.12'
Arc = 248.44' L.C. = 232.78' Del/Ft. = 8.59456 Min.

Station	Arc	FACE CHORD LENGTHS		Defl.	T. Defl.
		B Lt.	B Rt.		
1+91.95	—	—	—	0'00"00"	0'00"00"
2+00.00	8.05'	7.04'	9.06'	1'09"11"	1'09"11"
2+25.00	25.00'	21.86'	28.11'	3'34"52"	4'44"03"
2+50.00	25.00'	21.86'	28.11'	3'34"52"	8'18'55"
2+63.99	13.99'	12.24'	15.74'	2'00"14"	10'19'09"
2+75.00	11.01'	9.63'	12.38'	1'34"38"	11'53'47"
3+00.00	25.00'	21.86'	28.11'	3'34"52"	15'28'39"
3+25.00	25.00'	21.86'	28.11'	3'34"51"	19'03'30"
3+26.70	1.70'	1.49'	1.91'	0'14"37"	19'18'07"
3+50.00	23.30'	20.38'	26.20'	3'20"15"	22'38'22"
3+75.00	25.00'	21.86'	28.11'	3'34"52"	26'13'14"
4+00.00	25.00'	21.86'	28.11'	3'34"52"	29'48'06"
4+25.00	25.00'	21.86'	28.11'	3'34"52"	33'22'58"
4+40.39	15.39'	13.46'	17.31'	2'12"16"	35'35'14"



BENCHMARKS:
 BM #1: City of Wichita Disc at Southwest Corner of 135th St. W. & 13th St. N. 30.00± S. of @ 35.00± W. of @ Elev. = 1355.65 NGVD29
 BM #2: Small Railroad Spike in 2nd HLP. W. of 135th St. W. on South Side of 13th St. N. (N. Face of HLP.) Elev. = 1359.50 NGVD29
 BM #3: Small Railroad Spike in 4th HLP. W. of 135th St. W. on South Side of 13th St. N. (N. Face of HLP.) Elev. = 1366.64 NGVD29

Sta. 2+73.00, 31' Rt. Install Metro SNS "Obsidian Ct" (1501-1529) (See Detail, Sheet 4)
 P.V.I. Elev.=1373.40 No V.C.
 Sta. 1+91.95-PC
 Sta. 2+63.99
 Sta. 2+95.34 = @ PRICE
 Sta. 3+26.70

Construct Std. Type A Wheel Chair Ramp with Detectable Warning (Both Sides) (See Detail, Sheet 5)

Roll type curb & gutter to be constructed on the pavement on this sheet. Top of curb elevation are given for full height curb.

Baughman		Blackstone Addition - Phase I	
OBSIDIAN CT		Sta 0+00 to 4+40.39	
Baughman Company, P.A. 315 Ellis St. Wichita, KS 67211 F 316-262-7271 F 316-262-0149			
ENGINEERING SURVEYING PLANNING LANDSCAPE ARCHITECTURE			
PROJECT NUMBER 472-84397	DESIGN JAK	DRAWN AMH/TMS	
APPROVED NBW	DATE 8/22/07		
REVISIONS:	SCALE Noted		
	SHEET		
15 OF 45			
Blackstone/Phase I/Str9		06-08-E615	